

STORYTELLING

*Communicating complex landscape democracy
visions*

*by Anna Szilágyi-Nagy, Le:Notre Institute and
Szent István Egyetem*



CONTENT

- Storytelling - concept
- Storytelling - listening
 - L.A. River
 - SZIE university project
- Storytelling - communicate and disseminate



Where and when do you use or find storytelling in your life?

STORYTELLING

concept



STORIES ARE EVERYWHERE IN OUR LIFE



<https://prezi.com/glu93txk0wyg/storytelling/>

WHAT DO YOU CALL AN
ALLIGATOR IN A VEST?



AN INVESTIGATOR.

You begin making a first impression before you even speak.

What is your **interview attire** saying about you

Interview Attire Do's

Arrive 10 minutes early for the interview. This will allow you time to complete pre-interview paperwork, and will demonstrate that you are prompt.

- Grooming**
Arrive at the interview well rested, cleansed, and with your teeth brushed. Hair should be clean and styled conservatively. Men should be clean-shaven, or have neat and well-maintained facial hair.
- Posture**
Display proper posture (sit up straight with hands on lap and feet together) and remember to smile.
- Hands**
Begin and end the interview with a handshake. Fingernails should be well-groomed and clean. Women should wear light nail polish or a clear coat.
- Stockings**
Women should wear dark-colored stockings (not nude). Men should have dark socks (color coordinated with their suit).
- Shoes**
Shoes should be clean and polished. Women should wear a conservative heel, and black (dark) shoes are best for men.
- Clothing**
Wear a conservatively-colored, well-tailored business suit. Navy blue or black is best. Men should wear a tie with a conservative pattern. These guidelines can be relaxed slightly to allow for individual expression (especially when applying for a creative position), but if you think clothing might be too relaxed, it probably is.
- Jewelry**
Wear minimal, understated jewelry.
- Manners**
Be polite and courteous to everyone you encounter (even at the interview). Some of the people you meet may be involved in making the final decision to hire you.
- Bags**
Carry a professional portfolio or briefcase that includes copies of your resume, references, work samples, and your personal calendar to schedule interviews.

Interview Attire Don'ts

Don't be late for your interview! Turn off your cell phone, or better yet, leave it in the car. If you smoke, don't have a cigarette prior to your interview.

- Grooming**
Heavy and messy hairstyles make a poor impression. Hair accessories should be kept to a minimum, unless called for by hair style. For women, makeup should be minimal and not noticeable. Wear only a little cologne or perfume, if you must wear any at all.
- Posture**
Don't slouch. Be conscious of the image your body language is projecting. Don't cross your legs during the interview.
- Hands**
Brightly colored nail polish will not make a good impression. One ring on each hand is the most you should wear.
- Stockings**
Bare legs are inappropriate. Men should avoid white or brightly colored socks.
- Shoes**
Don't wear spiked heels, open-toed or flip-flop shoes or sandals and definitely not mules.
- Clot!**
Don't wear tight suits and very tight underwear. It's important to wear a proper fit. It's important to wear a proper fit. It's important to wear a proper fit.
- Jewelry**
Don't wear a watch or a watch chain. It's important to wear a proper fit. It's important to wear a proper fit. It's important to wear a proper fit.
- Man**
Don't wear a watch or a watch chain. It's important to wear a proper fit. It's important to wear a proper fit. It's important to wear a proper fit.
- Shirts**
Don't wear a watch or a watch chain. It's important to wear a proper fit. It's important to wear a proper fit. It's important to wear a proper fit.

NARRATIVE

STORY

TELLING

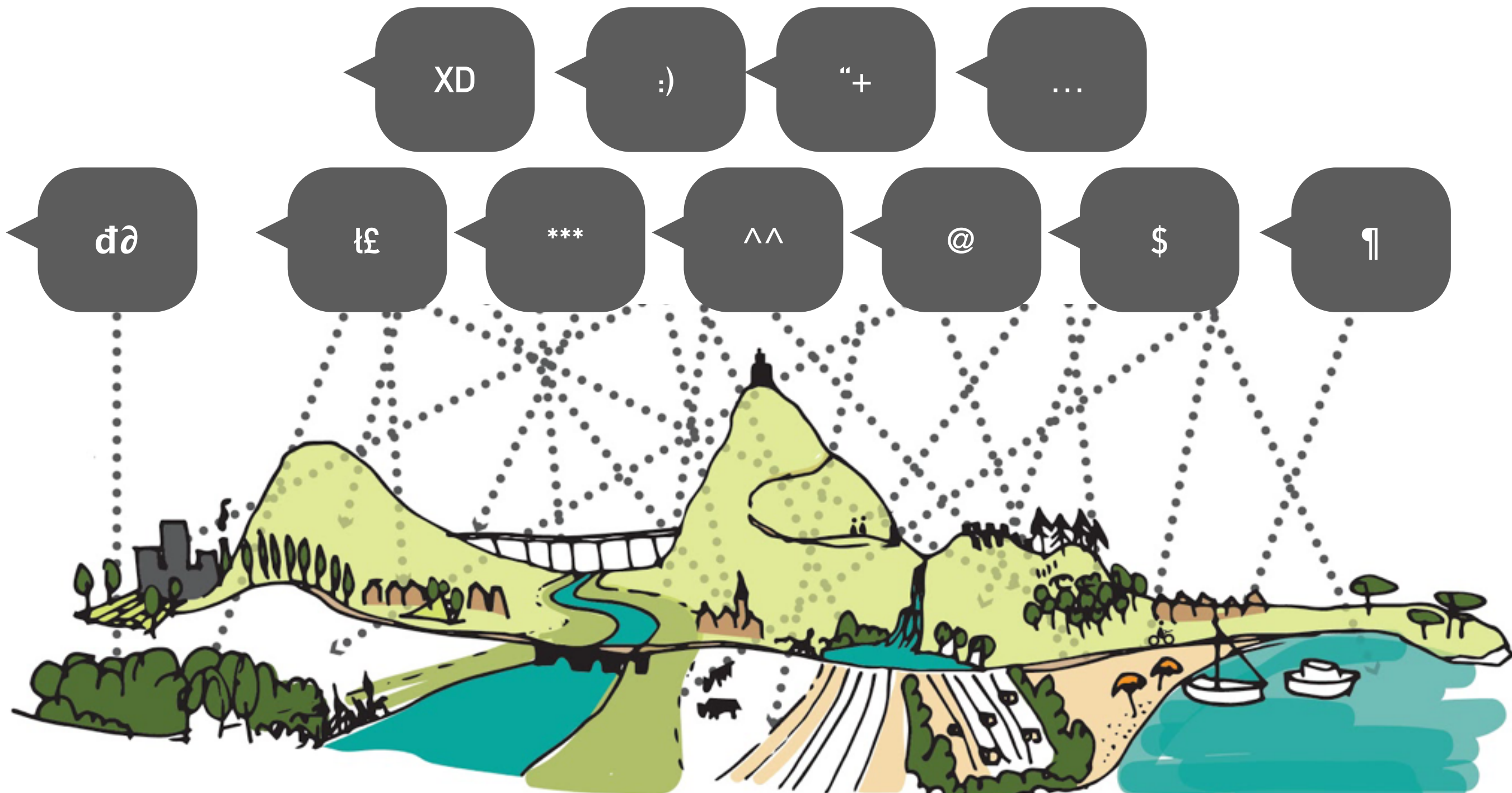
content

event
characters
setting
perspective of the narrator
time
...

format/
expression

film
verbal
dance
landscape
art
map
...

STORIES ARE EVERYWHERE IN THE LANDSCAPE

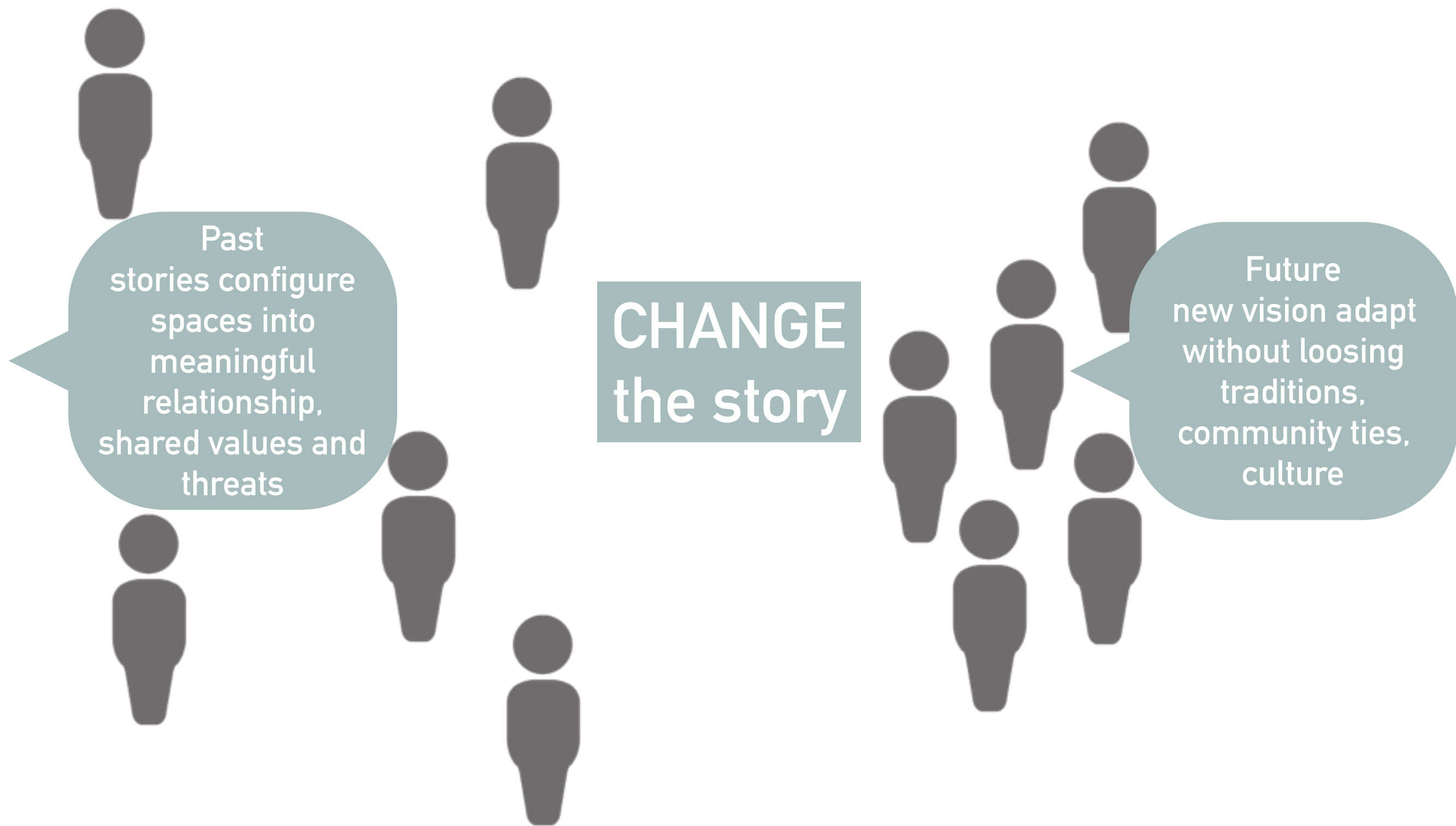


INTERRELATION OF LANDSCAPE AND NARRATIVE

| | | |
|---|-------------------------------|---|
| 1 | narrative experiences | routines, rituals or events that follow a narrative structure. E.g. tourist route in Prague, festivals, pilgrimage, crossing the threshold, daily journeys. |
| 2 | associations and references | elements of the landscape became connected with experience, event, religious event, history. E.g. tree as symbol of survivors. |
| 3 | memory landscapes | place that serves as focus of public and personal memory. E.g. monuments, museums, preserved buildings, districts, regions. |
| 4 | narrative setting and typos | spatial and temporal setting of a narrative, and is evoked repeatedly in the culture's narrative. e.g. epiphanies occurs on mountain top, chance meeting takes place on the road. |
| 5 | genres of landscape narrative | spaces shaped by culturally defined narrative forms (legend, epic, biography) |
| 6 | processes | actions and events caused by agency (water, wind, etc). Erosion, growth, succession, restoration or other records of change influencing the landform. |
| 7 | interpretive landscape | elements and programs that tells what happened in a space (makes an existing story comprehensible) |
| 8 | narrative as form generation | story to determine order in the design process, e.g. imagine where pedestrians would walk |
| 9 | storytelling landscapes | gardens, memorials or themed landscapes designed to tell specific story of a character or event |

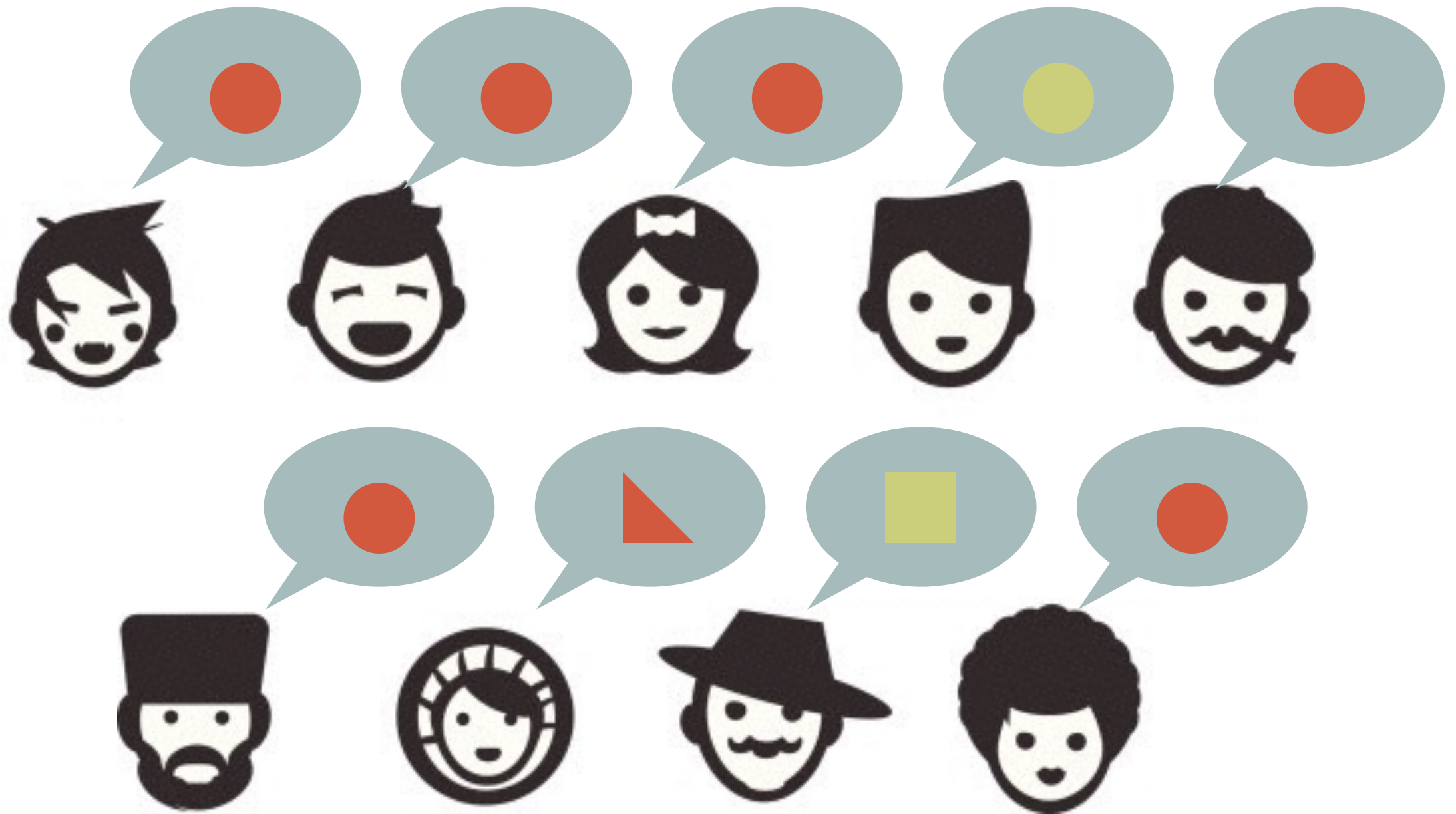
STORIES IN THE SERVICE OF CHANGE

Stories engage people at every level, their minds, emotions, values and imaginations



SECRET OF GOOD STORY

!!!represents many voices 



 ethic of stories???

PLANNING AS AN ACT OF STORYTELLING



listen and transform

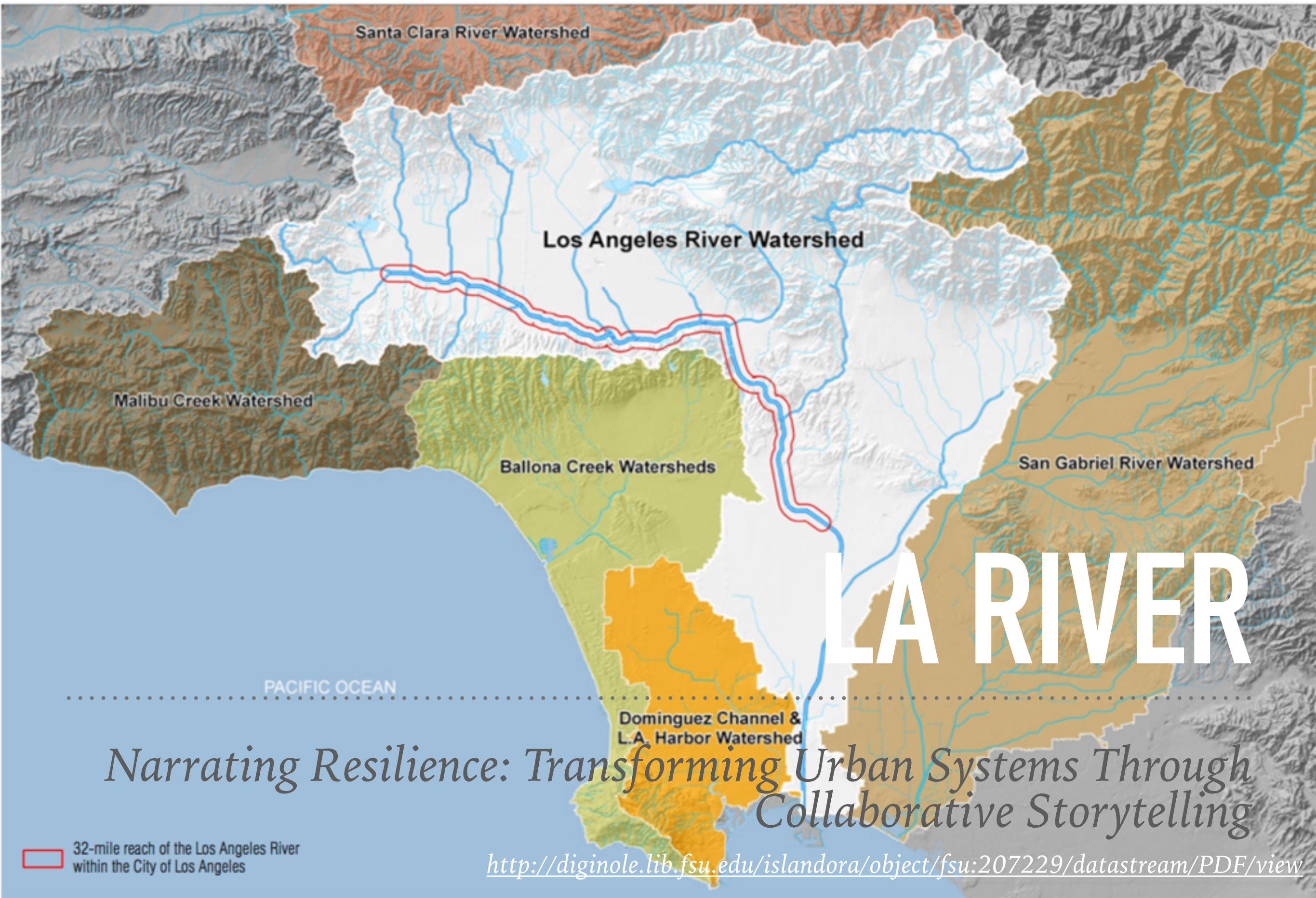


communicate and disseminate



STORYTELLING

listen and transform





before the expansion of the city it was natural space

threatening and destructive to the interests of human residents

US Army Corps of Engineers flood control 1930s

scaled up responsibility for government level



SHIFT IN NARRATIVE

<https://www.kcet.org/shows/socal-connected/departures-los-angeles-river-0>

“went down to the LA River, and counted houses, floating down the river during the floods”

is there a river?

pave 99%



SHIFT IN NARRATIVE

<https://www.kcet.org/shows/socal-connected/departures-los-angeles-river-0>



Friends
of the
Los Angeles
River



“turning toward the river, righting of wrongs, facing, re-engagement and transformation”

EVENTS

VISIT

EDUCATION

ENVIRONMENT

BLOG

WHO WE ARE

ACTION

FROG SPOT

DONATE



The G2 Parcel

The G2 Parcel in Taylor Yard is the 40-acre 'Crown Jewel' of Los Angeles River



The Frog Spot

Our unique summer visitor center is back for it's second season. Don't miss a single



Donate to FoLAR

Needs your support to be a champion for the LA River. Please join the LA River

<http://folar.org>

THE GREAT LOS ANGELES RIVER CLEAN UP

ELES



<https://folar.org/cleanup/>

RIVER ROVER ROLLS INTO L.A. RIVER DAY

.....



<http://folar.org/river-rover/>

RIVER WALKS



<http://folar.org/event/los-angeles-river-nature-walk-the-frog-spot-5/>

NEW VISION – STAKEHOLDERS

reconstruct the local governance scale as significant and meaningful

Local: city of Los Angeles
2007 Los Angeles River Revitalization Master Plan

community

village gardeners

Regional: Los Angeles County
1996 Los Angeles River Master Plan

urban rivers institute

Remapping LA

TreePeople

State: State of California

Friends of the Los Angeles River (FOLAR)

California Department of Water Resources

L.A. Creek Freak

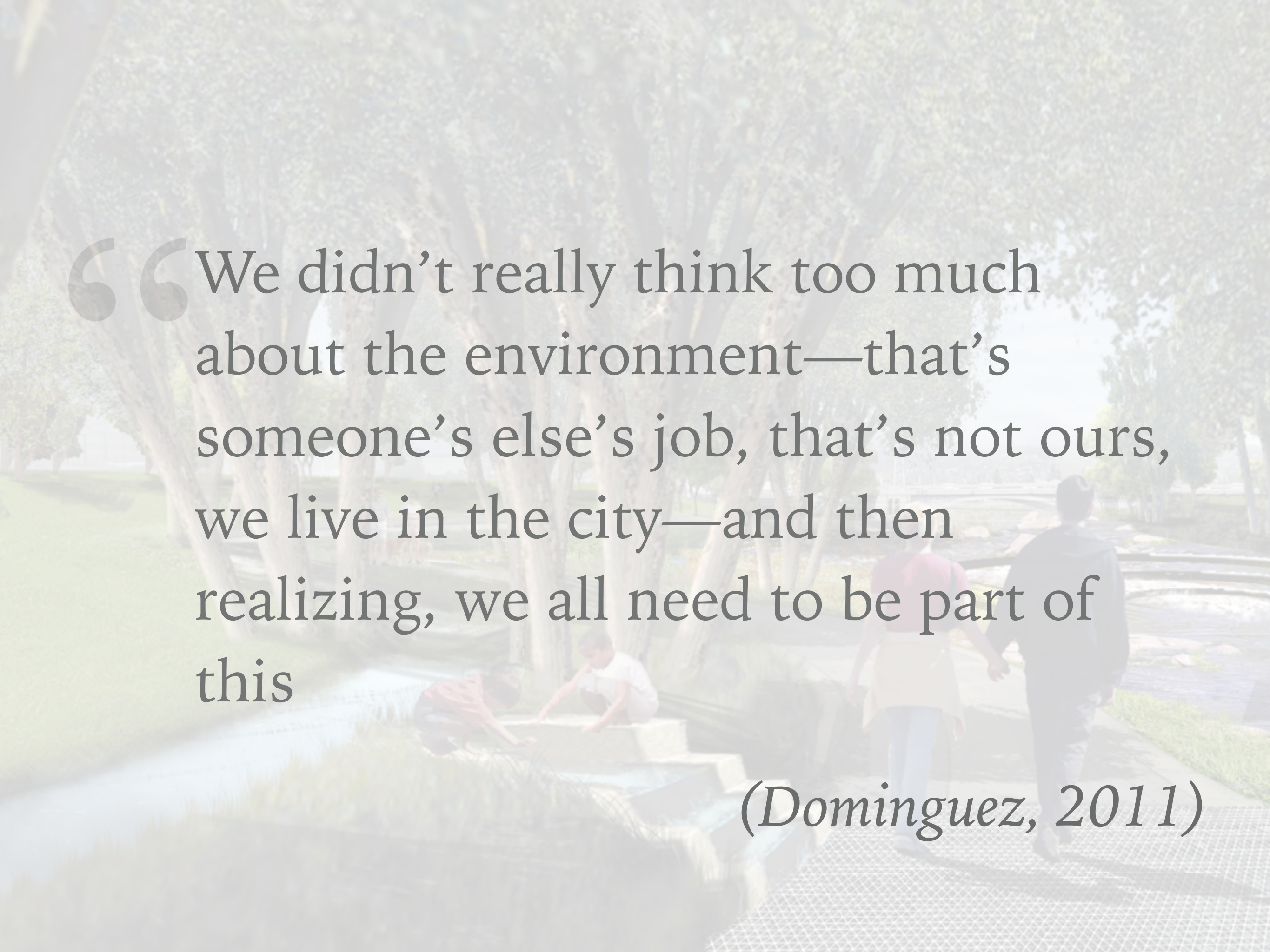
California State Parks

California Resources Agency

Los Angeles River Revitalization Corporation


Amigos de los Rios

<http://www.lariver.org/government-and-community-stakeholders>



“ We didn’t really think too much about the environment—that’s someone’s else’s job, that’s not ours, we live in the city—and then realizing, we all need to be part of this

(Dominguez, 2011)

A digital rendering of a park scene. In the foreground, a paved path leads towards a river. Two people, a woman in a red shirt and a man in a dark jacket, are walking away from the viewer. To the left, a young boy in a red shirt is crouching near the water's edge. In the background, several large, mature trees with thick trunks and green foliage line the path. Further back, two more people are walking on a path, and a dog is visible. The river flows through the center of the scene, with a small waterfall or drop-off visible in the distance. The sky is blue with some light clouds.

*Deconstructing the foundational narrative is
itself a storytelling move*

MASTER PLAN

Los Angeles River Revitalization Master Plan 2007

http://boe.lacity.org/lariverrmp/CommunityOutreach/pdf/LARRMP_Final_05_03_07.pdf

NEW VISION – GOALS OF THE MASTER PLAN

GOALS AND RECOMMENDATIONS SUMMARY

Preconditions for Revitalization



Flooding along the Cherry Creek in Denver, Colorado (2006)

Goal: Enhance Flood Storage

Recommendation #4.1:

Identify opportunities for peak flood storage outside the channel to reduce flow velocities in the River to sub-critical (less than 12 feet per second) levels. This will support the maintenance and reestablishment of vegetation.

Recommendation #4.2:

Identify opportunities for selective acquisition of additional rights-of-way to expand the River's floodplain.

Near-Term Improvements



Water quality treatment wetlands at Augustus F. Hawkins Park. (2006)

Goal: Enhance Water Quality

Recommendation #4.3:

Emphasize multiple-benefit landscape treatments and "green infrastructure" improvements.

Recommendation #4.4:

Implement water quality treatment at multiple scales to maximize efficiency.

Recommendation #4.5:

Create landscape-based water quality treatment at major confluences of the River to treat pollutants carried by tributaries.

Recommendation #4.6:

Develop "treatment terraces" within the channel to treat stormwater flows that "daylight" or surface in the River.

Recommendation #4.7:

Create landscape-based "green strips" at the top of Riverbanks and in adjacent linear parkland and streets to treat stormwater runoff from streets.



Linear park and bikeway at Ballona Creek, Playa del Rey. (2006)

Goal: Enable Safe Public Access

Recommendation #4.8:

Provide opportunities for safe access to the water, ensure that people can quickly exit the channel, and establish a flood warning system in the event of high flow conditions.

Recommendation #4.9:

Provide opportunities for temporary pools and lakes for water-based recreation by installing inflatable rubber dams.

Recommendation #4.10:

Create a variety of public spaces, including small pocket parks, natural areas, and urban plazas and civic spaces in "reclaimed" areas of the channel.

Recommendation #4.11:

Ensure public safety by using alternate "greening" techniques in areas where the concrete remains necessary for flood damage prevention.

Recommendation #4.12:

Continue development of non-motorized transportation and recreation elements including bike and pedestrian paths and multiuse trails in the River and tributary rights-of-way.

Long-Term Vision



Soft-bottomed portion of the Los Angeles River, near Los Feliz Boulevard in Los Angeles (2006)

Goal: Restore a Functional Riparian Ecosystem

Recommendation #4.13:

Create a continuous functional riparian corridor that provides habitat for birds, mammals, amphibians, reptiles, invertebrates, and fish within the channel bottom.

Recommendation #4.14:

Connect this corridor to other significant habitat and migration routes along the tributaries and into the mountains.

Recommendation #4.15:

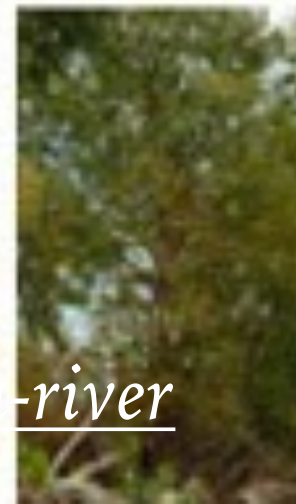
Improve water quality and provide fish passages, ladders, and riffle pools that would support desirable fish species, including steelhead trout if feasible.

Recommendation #4.16:

Bio-engineer the River's edge where feasible to create and restore wildlife habitat along the upper reaches of the River.

STORYSHARE: 35 LOCALS' STORIES OF THE LA RIVER

.....



<https://www.kcet.org/shows/departures/35-locals-stories-of-the-la-river>

SONGS OF THE LOS ANGELES RIVER PROJECT, 2011

KCET

Los Angeles River Project Winners of Songs of the L.A. River Project

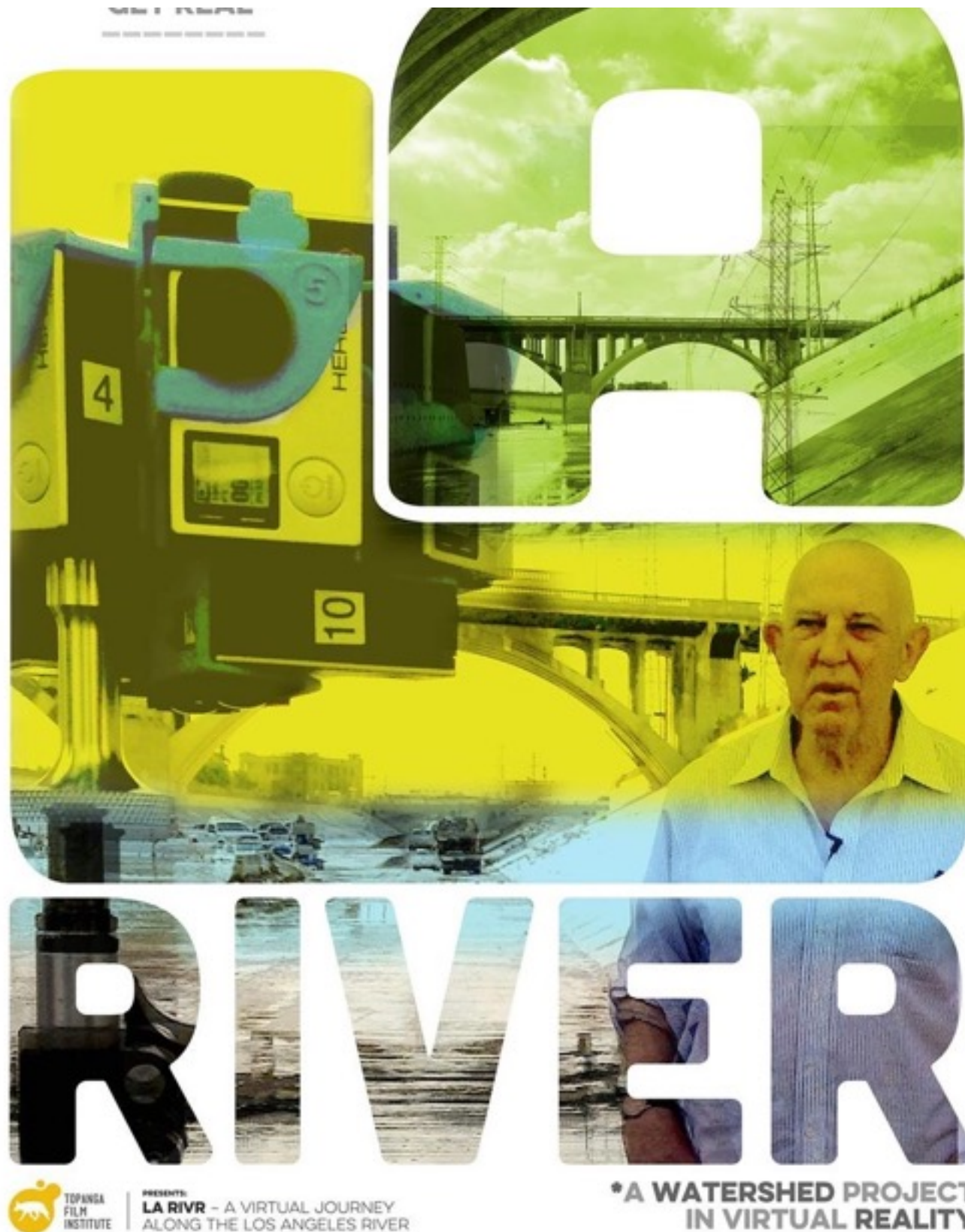


DONATE

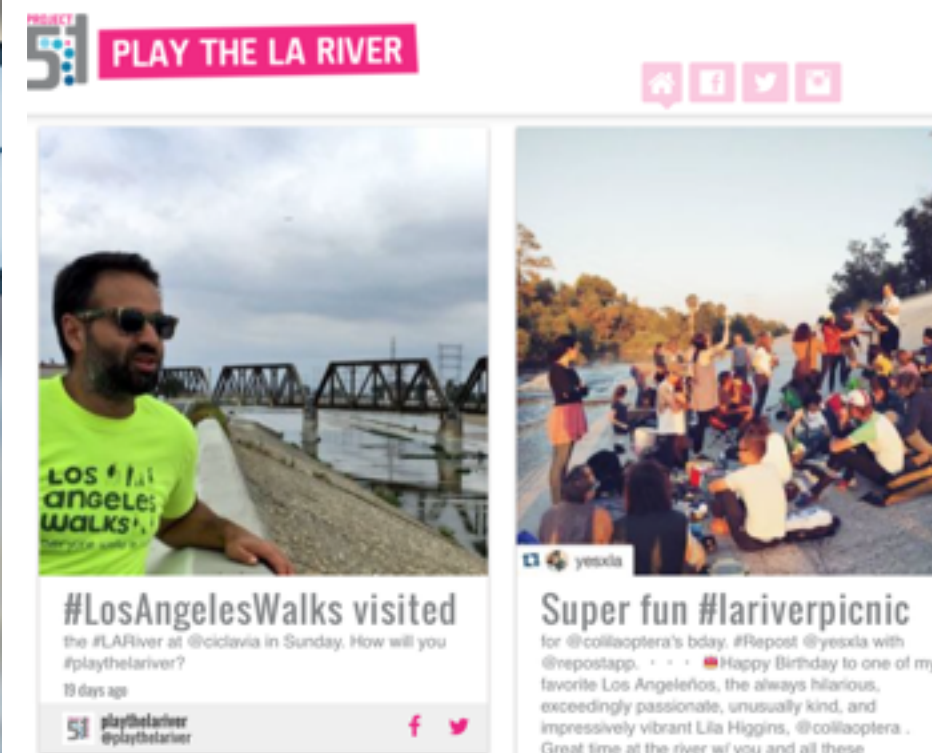


<https://www.kcet.org/shows/departures/winners-of-songs-of-the-la-river-project>

LOS ANGELES VIRTUAL REALITY EXPERIENCE



<https://www.kcet.org/shows/departures/35-locals-stories-of-the-la-river>



PLAY THE L.A. RIVER – GENERATE NEW STORIES

<http://playthelariver.com>

A faded background image of a park scene. In the foreground, a paved path leads towards a river. Several people are visible: two children are crouching near the water's edge, and a group of three adults is walking away from the camera on the path. The background is filled with tall, leafy trees, creating a canopy effect. The overall tone is soft and natural.

“

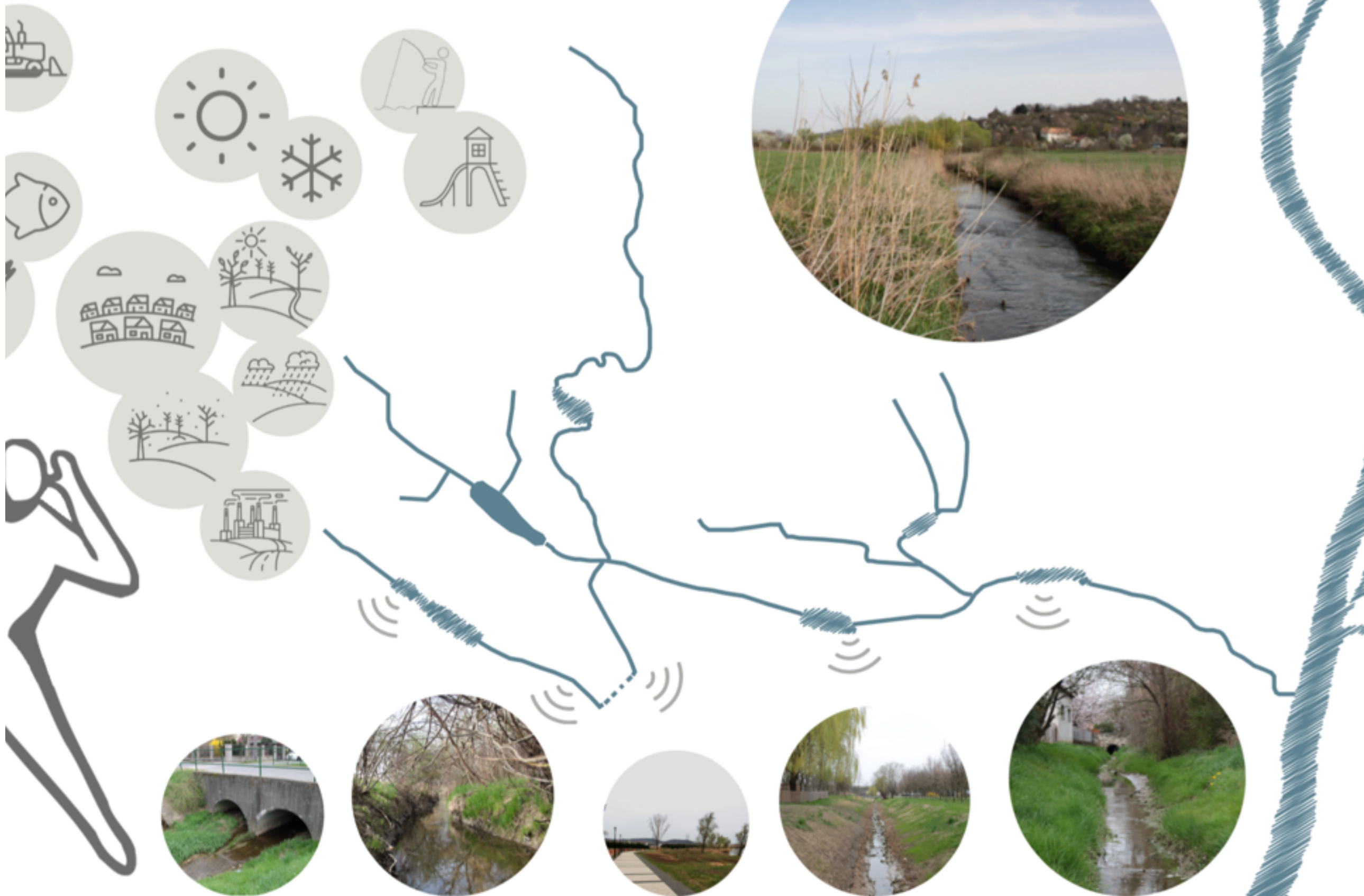
“My impression of the LA River has always been a bad one. but I’ve noticed the wildlife, and the goodness of it”

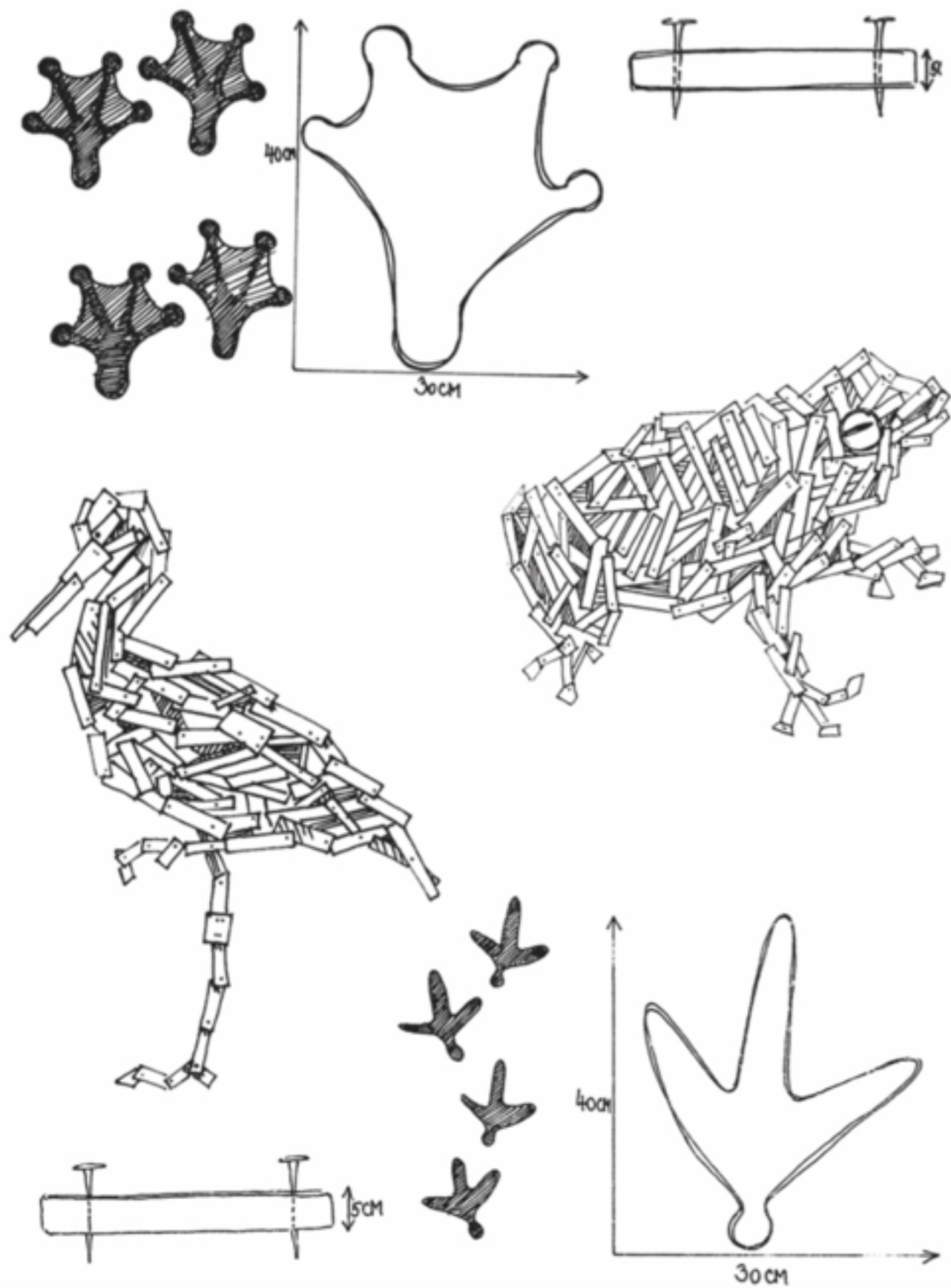
-local (KCET, 2012)



CREEKSIDE LANDSCAPE

prototype storytelling course at SZIE





világa



LOW



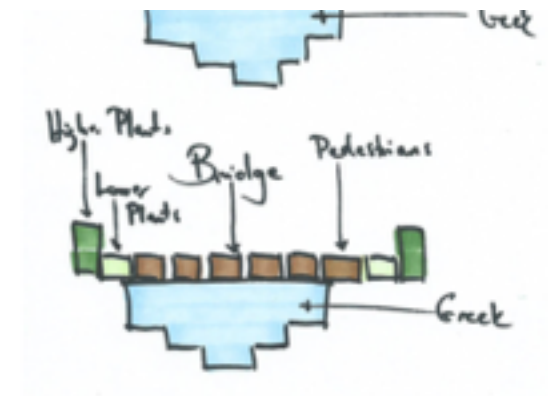
Carex sylvatica



Stachys palustris

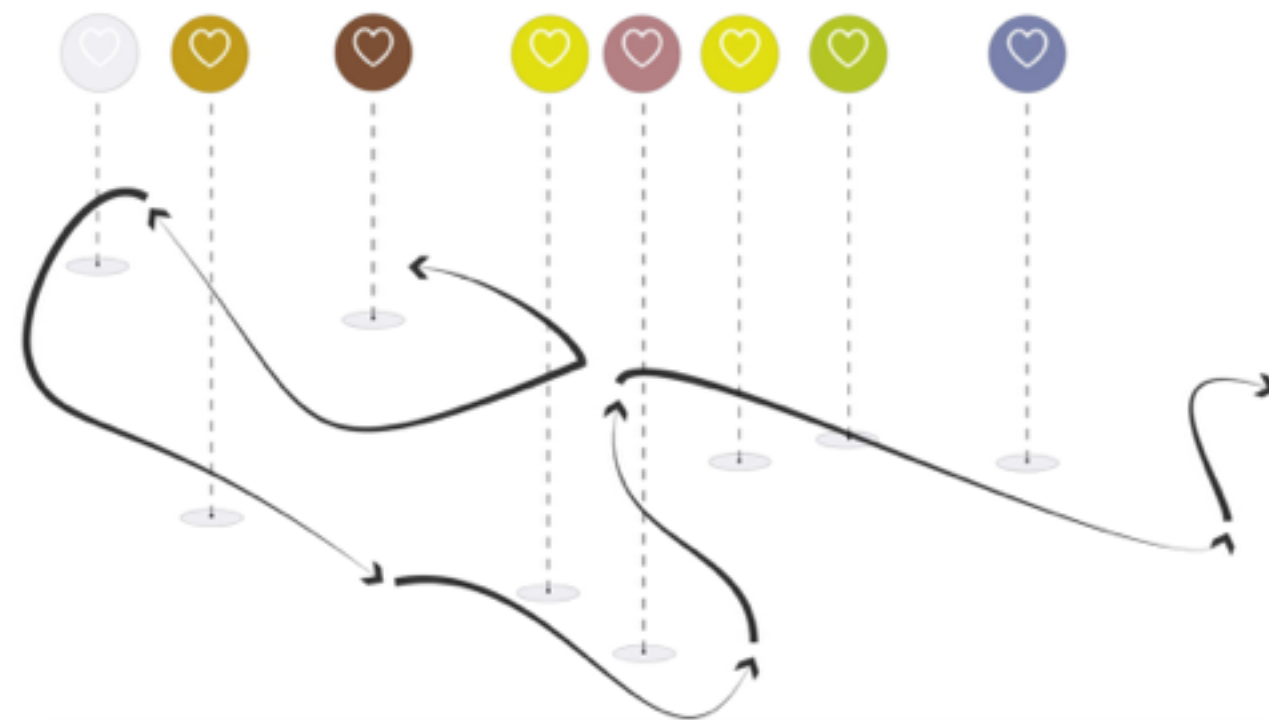


Mentha aquatica



Vegetation trail- info boards

- By placing markers- educating both locals and visitors



Picnic brand

- Events for locals
- Local products
- Brand „building“
- Events for tourists





WHO IS TÖRÖKBÁLINT





artista bemutató
szőlőskislaki artisták



street art
Gabay Gergővel



tárlatvezetés a patakról
tájépítész hallgatók



élőzene, ItinaiR
helyiek és MIXDOOR

16.00

17.00

18.00

19.00 és 21.00

Zimándy tornacsarnok

Főtér (volt végállomás)

**Park (Géza fejedelem u.
zöldterület)**

Téglagyár

Zimándy
sportcsarnok
bejárat a Dózsa
György utca
felől

Téglagyár

Főtér

Park

POP UP EXHIBITION IN THE REED

- as part of a festival
- interactive exhibition
- guided tour

2016.06.18-19.

tárlatvezetés 18-án 16-19 óráig

?

?

?

itt a patak

Kapcsolatok

pop up kiállítás
a patakról





STORYTELLING

.....
communicate and disseminate

MAP



PERSPECTIVE

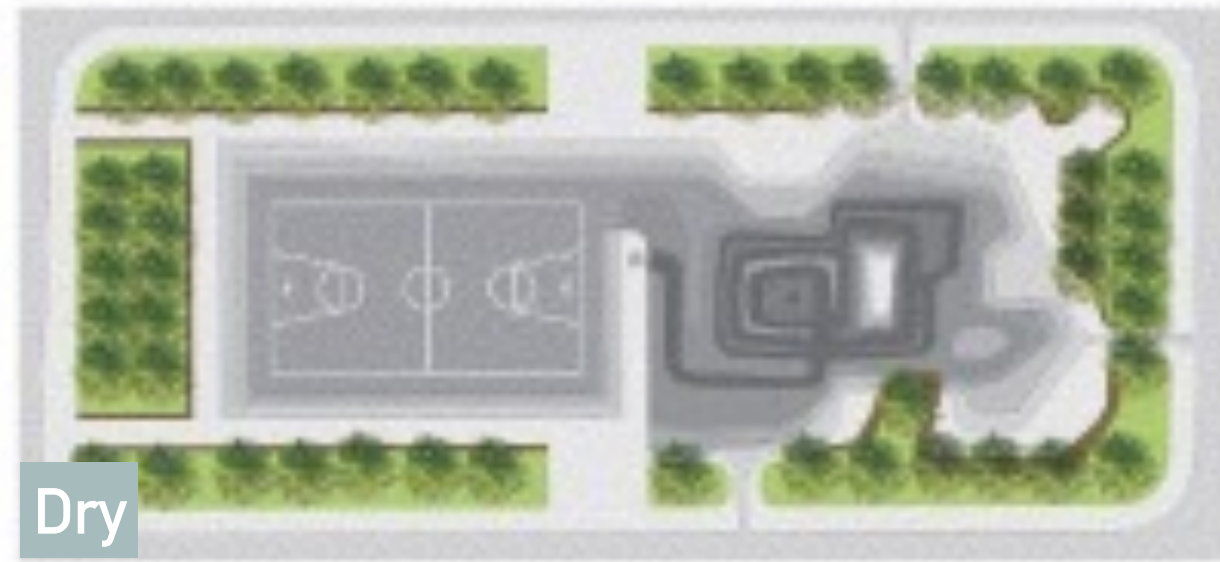


http://award.designtoimprovelife.dk/designs/WatersquareBenthemplein0cbfcf800793fc994528bf91f77855184a7dad1/dc2b2fba2ccffc1d900e3058478b0649_cropped.jpg

SECTION SEQUENCE



Dry



Medium rainfall



Once a year

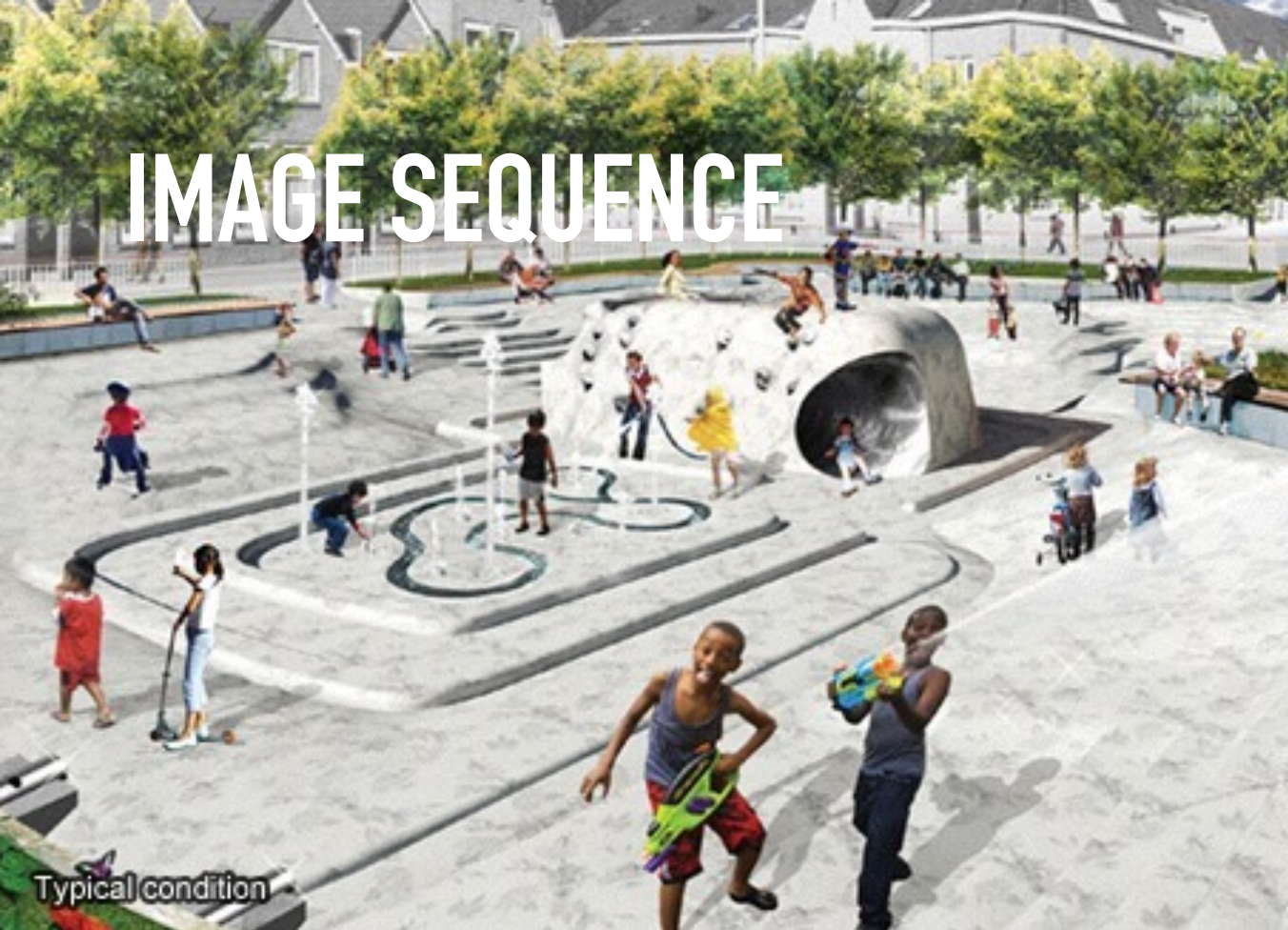


<http://www.urbanisten.nl/wp/?portfolio=waterpleinen>

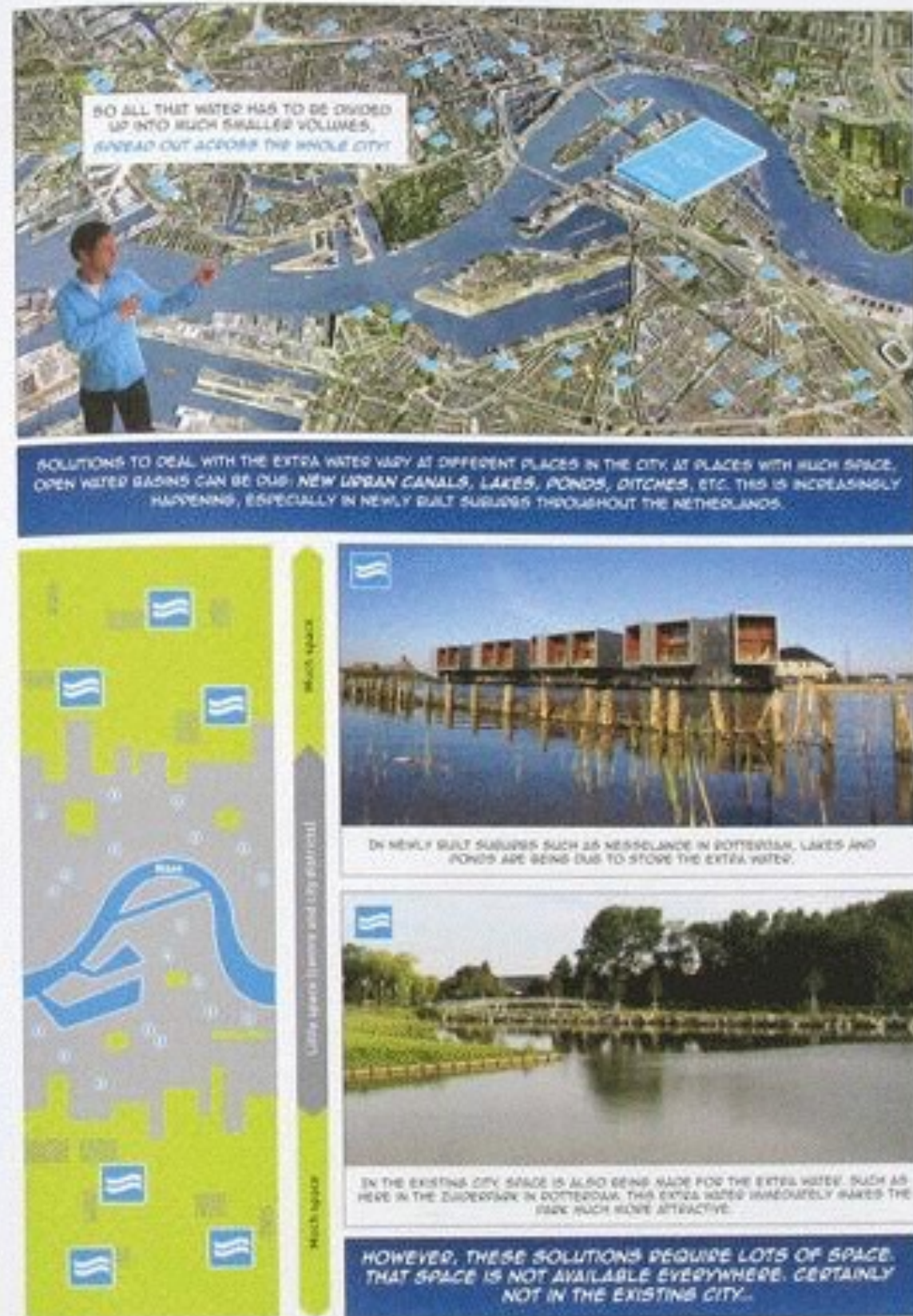
MODEL



IMAGE SEQUENCE

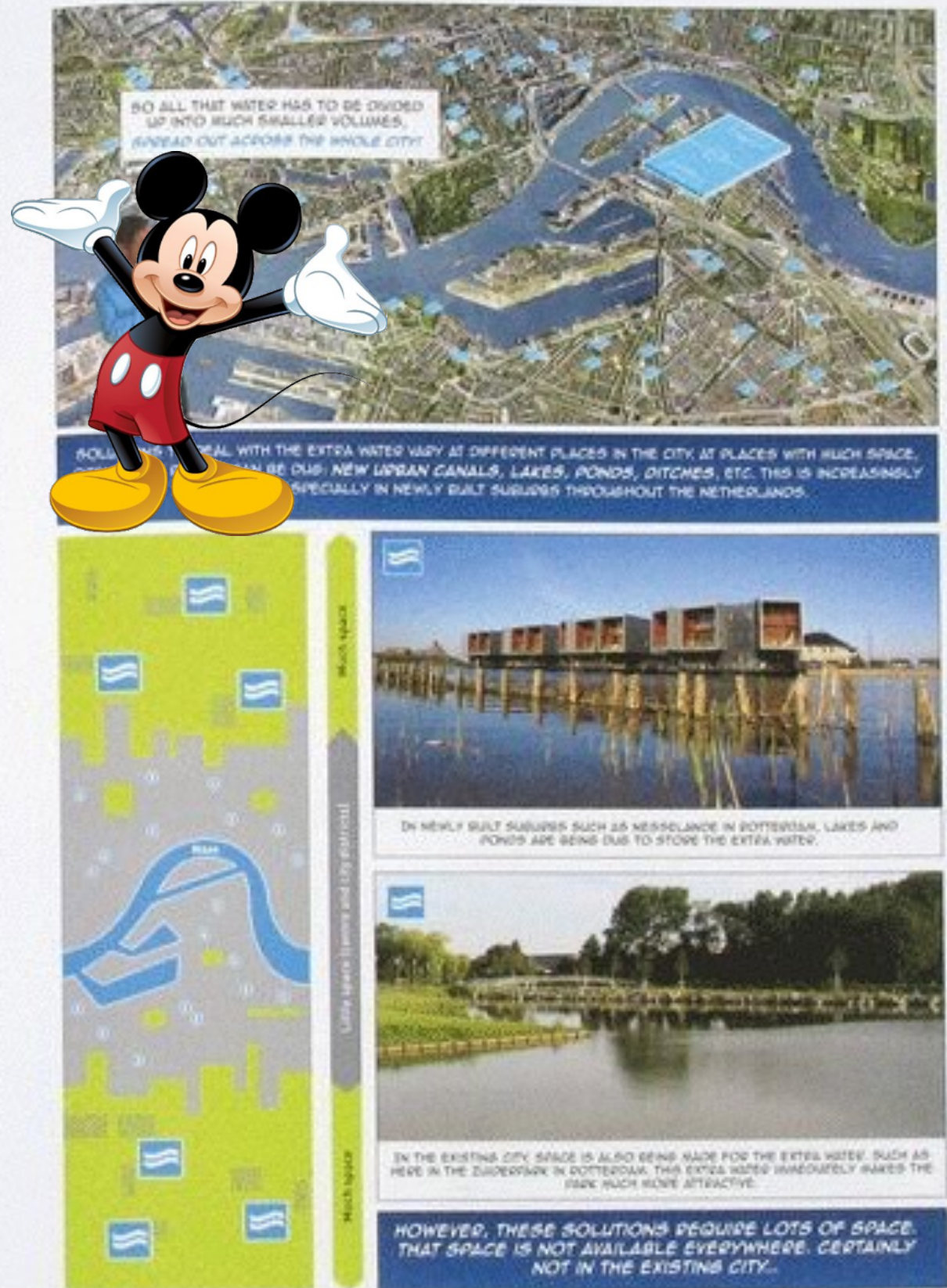


COMIC



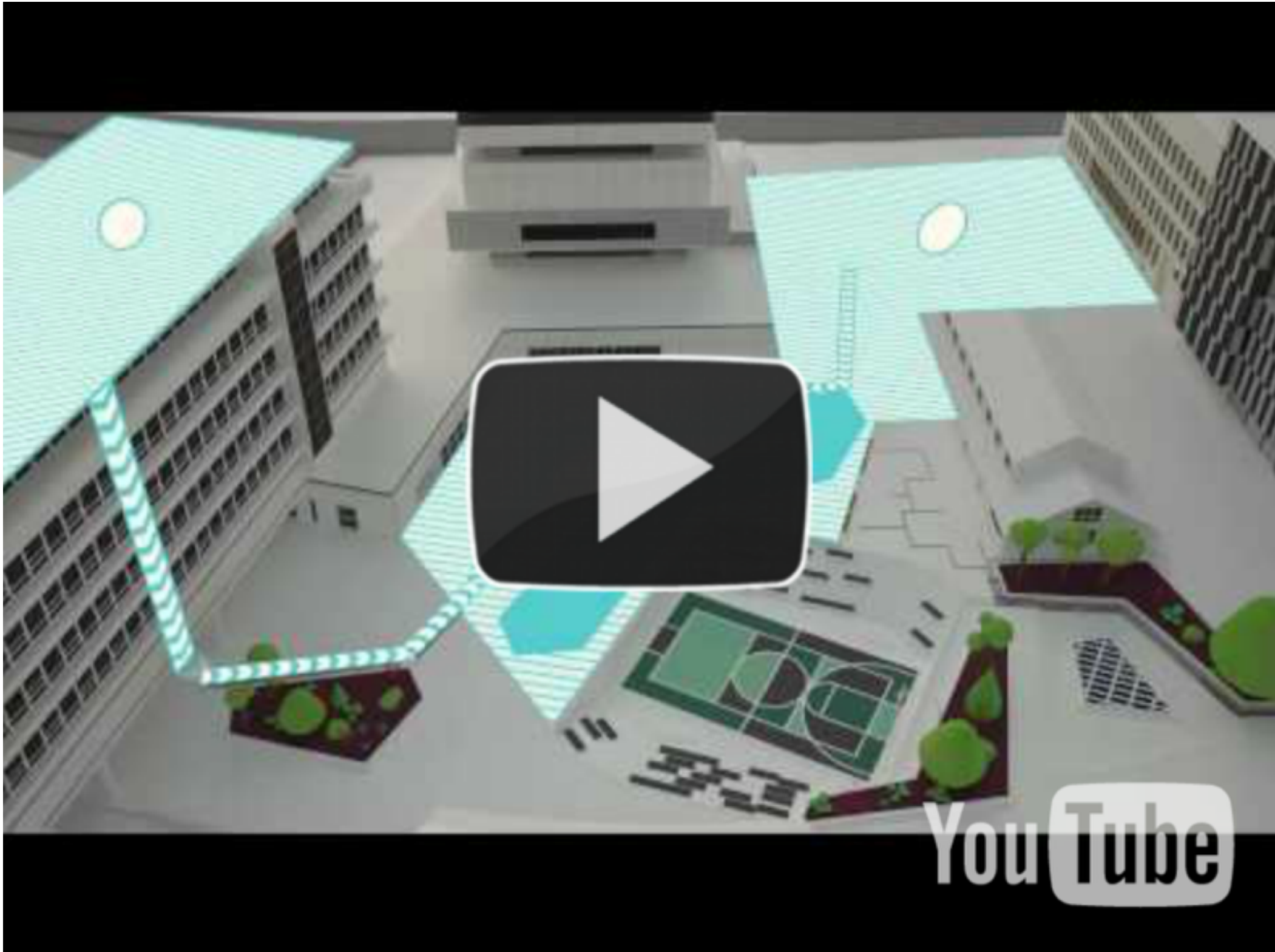
the urbanisten and the wondrous urban square

COMIC



~~Mickey Mouse~~
the urbanist and the wondrous urban square

VIDEO



<https://www.youtube.com/watch?v=kujf4BTL3pE>