

# Collaborative Monitoring & Evaluation of Landscape Democracy Actions

Introduction by Jeroen de Vries, LE:NOTRE  
Institute

Based on material developed in the  
LED2LEAP project in collaboration with  
Anita Reith, Hungarian University of  
Agriculture and Live Sciences

Wednesday, June 3, 2026



Funded by  
the European Union

# Our programme for today

**18 00**                    **Welcome + Intro**

**18 05**                    **Introduction on Monitoring & Evaluation**

*Jeroen de Vries*

## **Reflection & evaluation (40 minutes)**

**18 35**

*Monitoring and evaluation of your project / case / activity on the Miro board: (0) An exemplary project, (1) Input, (2) Activities, (3) Output, (4) Outcome > How to measure/document? (5) Long term Impact > How to measure/document?*

**19 15 - 30**

**Seminar finish**



A bronze statue of a man sitting on a bench in a park. The man is wearing a cap and a jacket, and is looking upwards. The bench is on a circular paved area. In the background, there are large trees and a building.

**How do we know that  
something changed?**

**impact evaluation**

Photo: Jeroen de Vries.



**Evaluation begins before  
you start**

Photo: Jeroen de Vries.



Community

# Monitoring and Evaluation on various levels

Team

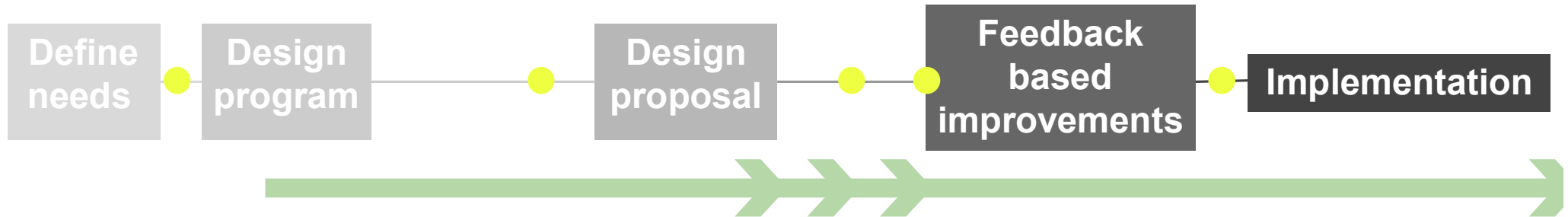
Individual

Photo: Ben ter Mull, Van Hall Larenstein



# Monitoring and Evaluation

## When?



## ➤ MONITORING

- It keeps track of different parts of the process, with varying intensity
- Continuous and systematic
- Can continue after implementation

## ● EVALUATION

- It happens in different parts of the process in order to evaluate what is being monitored
- Happens at the end of a phase
- Systematic and punctual



# The result chain & cycle

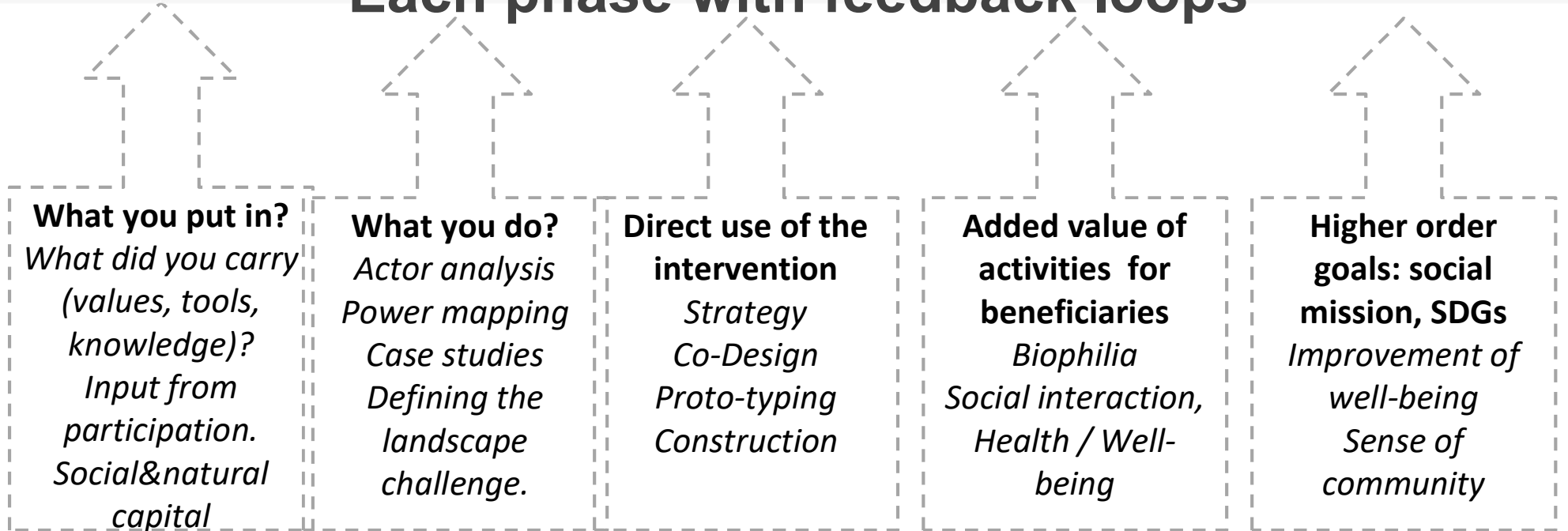
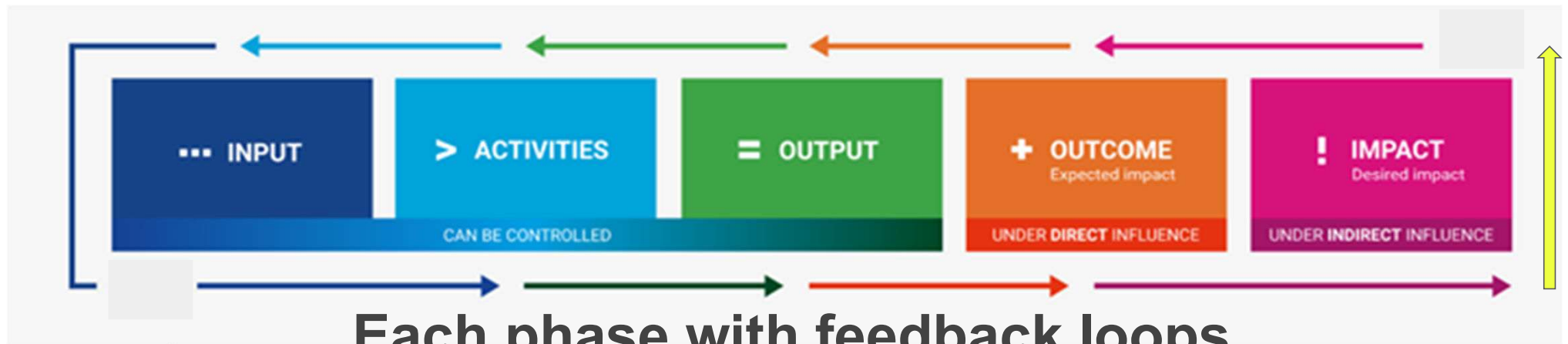


Image adapted from: L. Kleeman, Heldenrat, Erasmus+ SP Social Entrepreneurship for Local Change & Erasmus + Impact Tool



# The theory of change

<p>Results Chain</p>	
<p>Your idea how to link the different steps of the results chain</p>	
<p>Reflective questions: what is necessary to progress</p>	
<p>Indicators that show you whether you achieved the desired steps</p>	
<p>A timeline</p>	

Source: L. Kleeman, Heldenrat, Erasmus+ SP Social Entrepreneurship for Local Change.



# Questions for Landscape Democracy

- How has access changed for all users and not only the immediate community (right to landscape).
- What new rights have been pursued in the process and for whom.
- How has the perspective of the landscape, of ecology and nature been impacted? (right to nature)
- How has the community identity and cohesion been impacted?
- How inclusive has it been of users of all kinds?
- Has the project addressed the perspective of the fragile, the unheard?
- What evidence of empowerment and enhancement of individual capabilities has been seen?



# Participatory evaluation

Campilan (2000) participatory evaluation is distinguished from the conventional approach in five key ways:

- Why evaluate?
- How to evaluate ?
- Who evaluates?
- What to evaluate?
- For whom evaluation is being done?
- learning for the program/ project
- as a common process, adaptive, semi-structured
- representatives of the community, internal groups
- criteria discussed and negotiated, focusing on the common goals, process and outcomes
- for the community to learn, groups of participants

Source: [https://www.betterevaluation.org/en/plan/approach/participatory\\_evaluation](https://www.betterevaluation.org/en/plan/approach/participatory_evaluation)



# Benefits of peer-evaluation

- Increased ownership of and engagement in the evaluation by program participants and other key stakeholders
- Better quality evaluation findings and outcomes
- Better use of evaluation results and recommendations
- Strengthened evaluation capacities of the group
- Improved project or program impacts



# Indicators

to measure the performance

Quantitative

**Number of**

(people involved/participants/meetings held/elements/tools used/ feedbacks received...)

**Percentage of**

(groups/tools and methods/positive feedbacks received...)

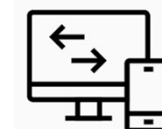
Qualitative

**Type or level of**

(people involved/participants/meetings held/elements/tools used/satisfaction...)

**Proportion or type of**

(groups/tools and methods/feedbacks received...)

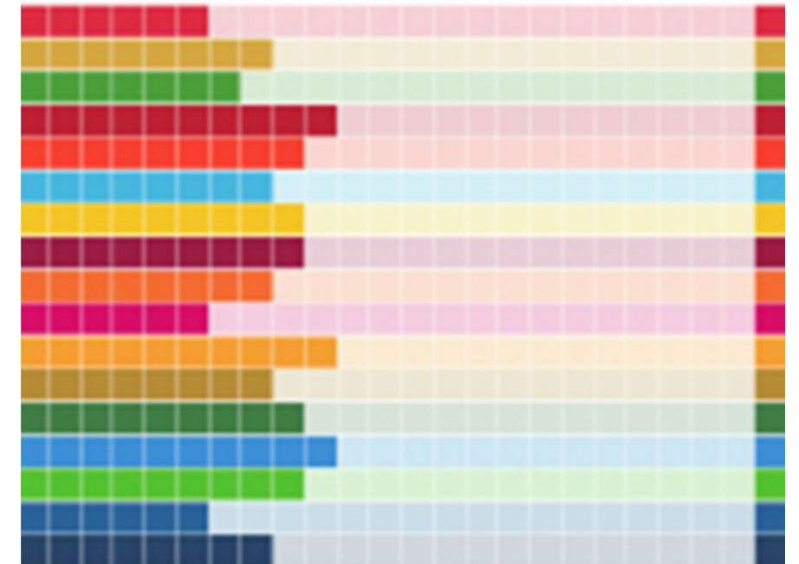




# Goals and objectives



## EVALUATING PROGRESS TOWARDS THE SUSTAINABLE DEVELOPMENT GOALS



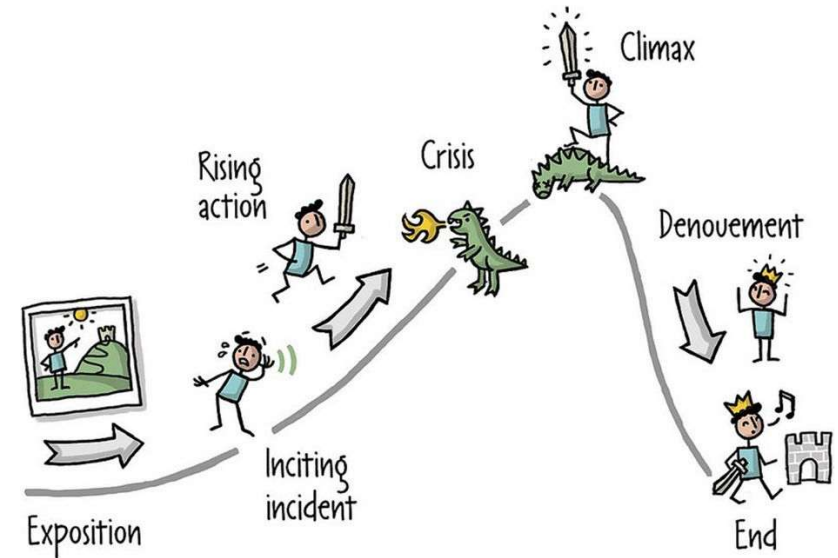
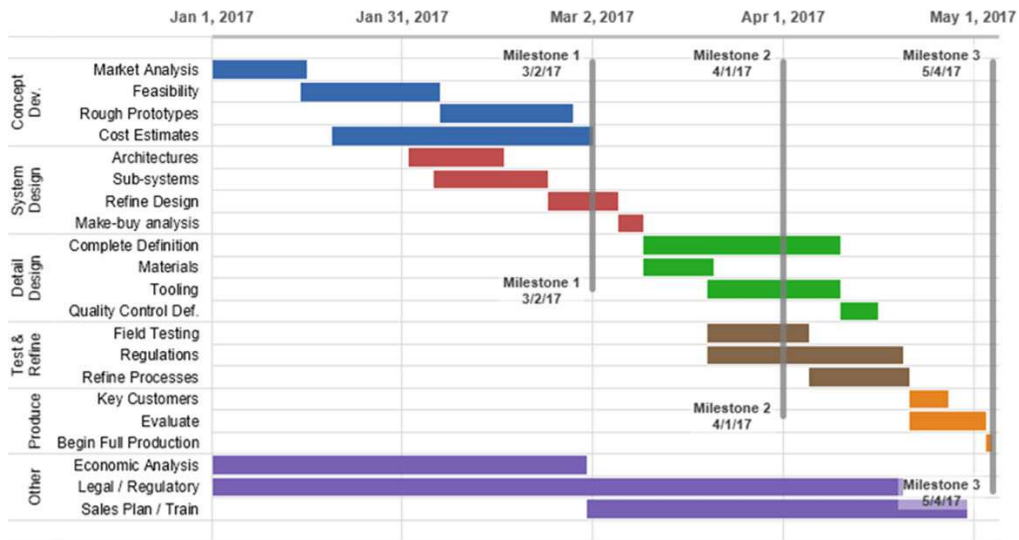
## Reflection:

- What were the selected goals initially? Have the goals changed? Did the team add new goals throughout the process?
- What activities did you take to achieve these goals? What is the program's current stage of implementing the goals?
- Were all goals achieved? If not, what were the obstacles?
- Were the selected indicators good enough to measure the success?
- What did we learn? What would you do differently next time?





# Process



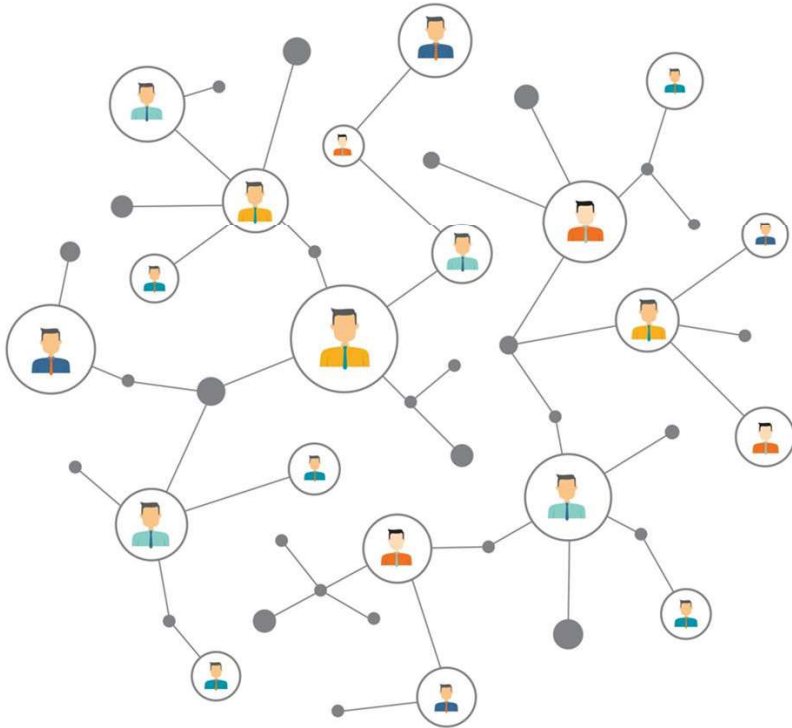
## Reflection:

- What is the program's current stage of implementation? What were the milestones of the project? Were the different stages of the process coherent?
- Is the program being implemented the way it was intended? Did the process stay in its original direction or did the process change directions?
- Were the participants satisfied with the process? Was the process effective enough? Are the selected indicators good enough to measure success of the process?
- What did we learn? What would you do differently next time?





# Output/Outcomes



Viewpoints	Criteria	Native app	Web app	Widget	HTML5
Developer	Ease of developing	4.67	3.67	5	4.67
	Ease of coding	4	2	3	5
	Ease of debugging	4.33	3	5	3
	Ease of testing	4	1.67	3	4.33
	Ease of deploying and updating	3	3	3	3
	Ease of distribution	3.33	5	4.5	5
	Application types	5	3	3.67	4.33
	Powerful libraries and APIs	5	3	5	5
	Payment possibilities	3	5	3	5
	Average points	4.04	3.26	3.91	4.37
User	Ease of use	5	1.33	3.33	3.67
	Functionality	4.33	1.67	3.33	3.33
	Install and update	2	4.5	3	4
	Average points	3.78	2.5	3.22	3.67
	Service provider	Content management	4	2.5	4
Administration		3.5	3.5	3.5	3.5
Distribution		2	5	3	5
Average points		3.17	3.67	3.5	3.83

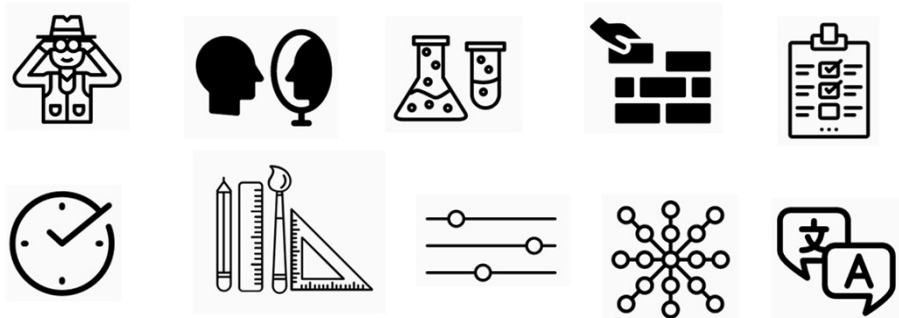
## Reflection:

- What were the greatest outputs and outcomes of the project? Are they matching with the expected goals and objectives?
- Were the selected indicators effective in measuring the outcomes?
- Were the participants satisfied with the outputs and outcomes of the project?
- What did we learn? What would you do differently next time?





# Tools and Methods



## Type of the tool

Formal / Informal  
Online / Offline  
Individual or group(s)  
Observation / Reflection / Test / Performance /

Evaluation

## Ease of use

Easy to install, maintain, facilitate, logistics  
Easy to observe and make a report

## Tool customization

Materials  
Fitting to the target groups

## Platform support

Online or offline

## Coherence with the process

## Usability

For the community and for the facilitator  
Relevant outputs and outcomes

## Punctuality

## Others

Language, Distribution, Duration, etc.

## Reflection:

- Were the tool selected fitting to the targeted groups? Could the selected tools and methods engage all groups equally?
- Were the selected methods resulted in decent outcomes?
- Have the tools been efficient enough for the methodology selected?
- Were the selected indicators effective enough to measure the success of the tools and methods?
- What did we learn? What would you do differently next time?



# Approuvé par Emma

## PROCESS

- ① Focus on what feedback is important for the public space.
- ② Develop monitoring accordingly.
- ③ Provide fun and enjoyable ways of carrying out monitoring.
- ④ Buy equipment; design data collection form and print copies.
- ⑤ Users undertake monitoring activity.
- ⑥ Collect, encode and analyse data.
- ⑦ Feed back information to target audiences.
- ⑧ Improve placemaking accordingly.

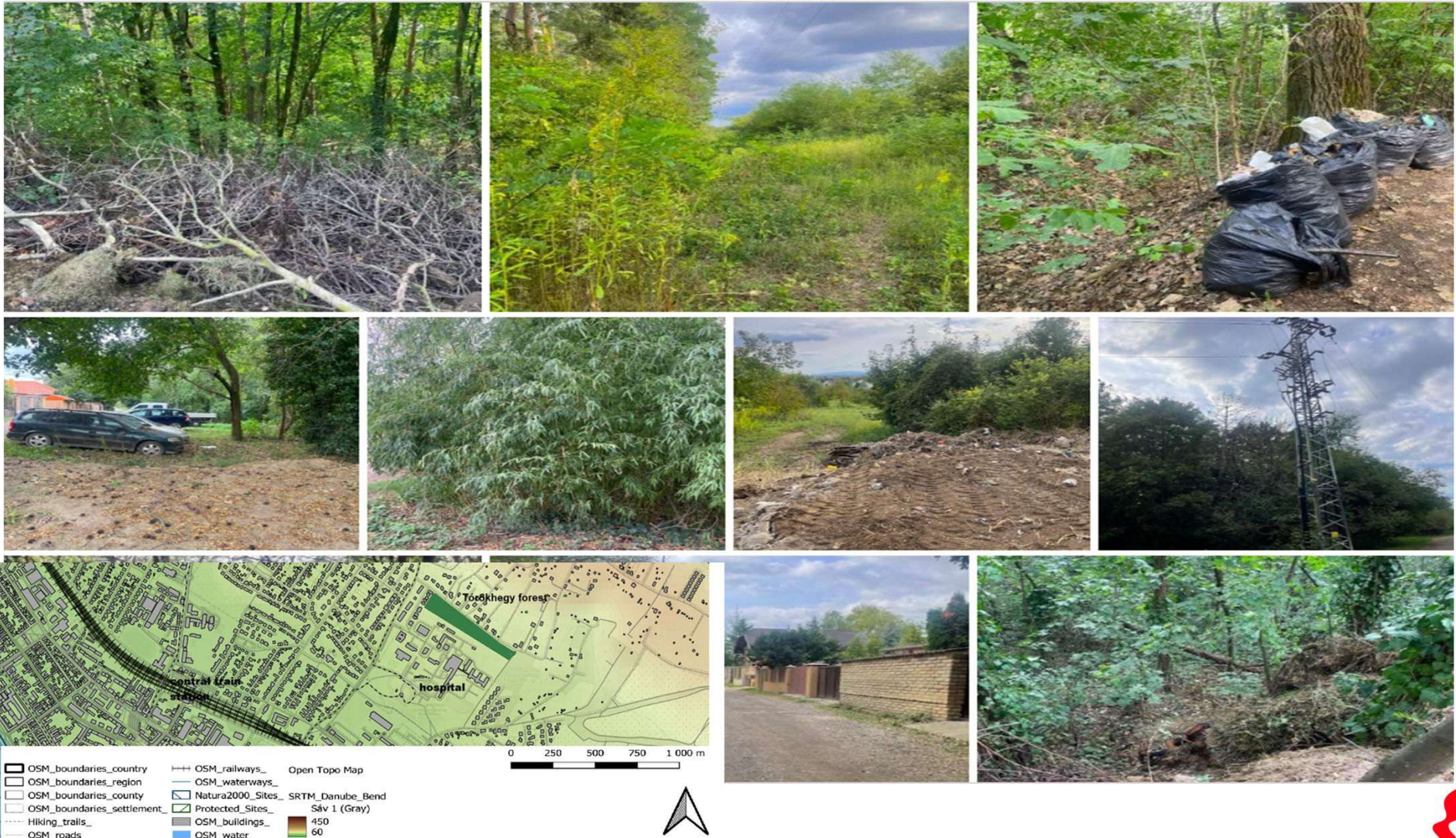
Make sure the form of evaluation is adapted to and meaningful for the community members.

And it should be fun to compose, to share and to receive.

Source: Lively Cities Toolbox, page 27 and 28



# Example of the Törökhegy forest in Vác



# **Understanding the local landscape transformation in Vác- Crucial insights**

**Preparation by kultúrAktív and the Hungarian University of Agriculture and Life Sciences**

- Reduction in Children's Natural Experiences**
- Decreased Freedom for Free Play**
- Mismatch Between Children's Preferences and Parental Choices**
- Concentration of Outdoor Play in Limited Spaces**

Source: Tóth,E., Szilágyi-Nagy, A. and Valanski, I. 2025. Rconnecting Children with Nature in Urban Space In: 4D 76, 16–23. (2025), <https://doi.org/10.36249/4d.76.6427>



# Vision Törökhegy forest

Let the forest be a place for children that is adventurous and exciting. A place where they can spend time together. Where they can discover the restorative power of nature and the beauty of its changes. A place that offers opportunities for exploration and experimentation. Where they feel safe and can play freely. Let the forest be a space where they can experience the freedom that nature provides.



# Goals for the forest

- **Make the forest more accessible**
- **Offer children possibilities for nature experience**
- **Let parents feel that children can play safely in the forest**
- **Strengthen the sense of community feeling among the residents**



# Activities during the week

- Testing how children interact with nature by a play
- Make some changes in the forest landscape: open spaces, paths, play elements
- Organising a community event with artistic interventions



Photos: Rakibul  
Hassan Rizvi and  
Tasmia Zaman



# Output and outcome

- **A more accessible forest with paths and open spaces**
- **A community event where residents and their children meet and talk to each other**
- **Children experienced how it is to be in nature close by home**
- **Parents experienced that they could supervise their children still while they had some nature play**
- **Neighbours who hardly met before spoke with each other**
- **Residents understood that they could organise community events to meet each other and that this can be fun.**



# Impact and methods

To understand the impact one needs to know:

- What was the landscape challenge?
- Who were the actors?
- How was the participatory process?
- Who planned and constructed it?



# Impact and methods

- **Strengthened sense of community in the neighbourhood**
- **Change of behaviour in children to feel connected to nature and feel free to play in the forest**
- **Stronger awareness of policy makers of the power of small democratic intervention**

## Quantative

- **Number of community events that take place in the forest**
- **Number of parents and children that take part**

## Qualitative

- **Observation of how children play in the forest**
- **Stories of children what they think of the forest**
- **Stories of residents**
- **Decisions by the local authority on the sustainable development of the forest**



# Questions and comments

- This all seems so easy, but in reality it is not. what if there are unexpected outcomes?
- And is failure an outcome? what can we learn from it?
- Do you recommend using various ways to document these results, which might be useful for policy change / funding etc?
- These indicators are also useful for assessing whether the objectives defined to achieve your goals and implement your landscape vision are effective.
- That's correct, it is not easy at all. The reality is always complex, changing, goals are shifting, actors do not agree on priorities or values. Therefore it is important to have shared challenges and goals in the beginning.
- Failure is also an outcome. And it can have an impact on the community. Either to start anew and approach things in another way. The importance is to learn from it. Jeroen had once a totally failed co-planning process because the inhabitants were very angry with the municipality about regulations for dogs in public space. From this he learned that one should not start with a plan but first listen to what is going in the community before proposing anything. The inhabitants learned that they really could influence the decision makers by their anger and that they were finally heard. The whole process was restarted.
- Various ways are important for different groups. As Angeliki stated, you can also use various ways to see if the support the same conclusions to see if they are valid or not. The way of documenting and collecting data depends on what are important values of the ones you present the evaluation to. So a policy maker may have specific goals like satisfaction of residents with their neighbourhood or accessibilities for sport activities. So you first need to explore who you want to address and if these benefit the community.



# References for collaborative evaluation

Landscape Democracy Tool Box; especially LD tool

[https://ilias.hfwu.de/goto.php?target=file\\_27129\\_download&client\\_id=hfwu](https://ilias.hfwu.de/goto.php?target=file_27129_download&client_id=hfwu)

Campilan, D., 2000. Participatory Evaluation of Participatory Research. Paper presented at the Forum on Evaluation of International Cooperation Projects: Centering on Development of Human Resources in the Field of Agriculture held on 6-7 December 2000 at the International Cooperation Center for Agricultural Education (ICCAE) of Nagoya University, Nagoya, Japan.

## *Websites*

[https://www.betterevaluation.org/en/plan/approach/participatory\\_evaluation](https://www.betterevaluation.org/en/plan/approach/participatory_evaluation)

[https://www.publicconsultinggroup.com/media/1272/pcg\\_collaborative\\_evaluation.pdf](https://www.publicconsultinggroup.com/media/1272/pcg_collaborative_evaluation.pdf)

<https://www.betterevaluation.org/en/plan/approach/cort>

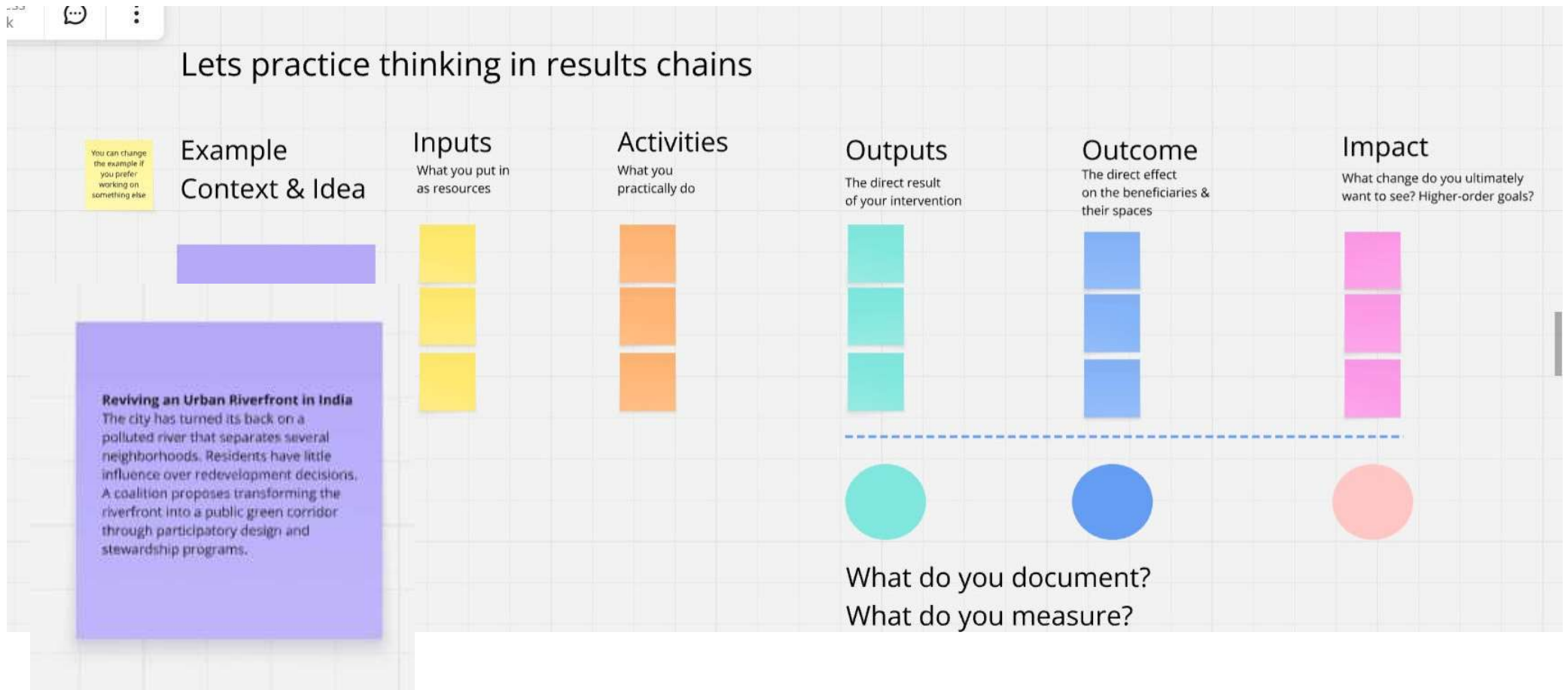


# Exercise collaborative evaluation

1. *Our common point of evaluation is this seminar is an example.*
2. *You will add the elements of the result chain*
3. *For the results, the outcome and the output we ask you to define the main indicators you would use for evaluation.*
4. *You can start with reading the assignment, explaining or adapting if you want.*
5. *When all understand it, you start with the inputs and activities. When these are defined you can follow up on the results, outputs and outcomes. For each define some indicators.*



# Evaluation and the results chain



[https://miro.com/app/board/uXjVGlq88D0=/?share\\_link\\_id=498270236941](https://miro.com/app/board/uXjVGlq88D0=/?share_link_id=498270236941)

