

May 6, 2026

# Entering the Process

## Community, Activism & Power

## Changing the Power Map



# OLA

Phase B Coordination: Ellen Fetzer with OLA team, based on previous editions

# Learning Goals of Unit 2:



- Critical reflection of **structures, conditions and dependencies** in respect to societal contexts and individual environments
- Critical reflection of **the role of the planner** in a diverse society (expert vs facilitator), and what leadership means in a participatory context.
- **Critical mapping** of landscapes, communities and power
- Identification of **actors** and **power** structures in a new and unknown context
- **Active listening** and a high level of empathy for various perspectives and viewpoints in an intercultural context.
- Demonstrate knowledge of the evolution and contemporary understanding of concepts of **community and identity**.
- This includes a critical reflection on the role of the **planner (as 'expert')**. Through understanding these principles we can reflect on our own values as a planners ('experts').

## Reflexivity

## How are we approaching these goals?

- Short **theoretical inputs** on activism, community mapping and power mapping
- Further development of your selected landscape democracy challenge, by developing a **community map** and a **power map**
- Exploring **landscape democracy activists** (each participant selects one)
- **Role play exercise** on May 13: As a team, you step into the shoes of each selected role model and you try to address the landscape democracy challenge
- Follow the **seminar readings** for phase B and expand your concept map

# Actors in the landscape

## Suggested mapping structure

- **Local people:**  
Who lives in or experiences the landscape?
- **Stakeholders:**  
Who influences decisions about the landscape?
- **Knowledge holders:**  
Who understands the landscape?
- **Affected groups:**  
Who benefits or loses from change?
- **Missing voices:**  
Who is not represented but should be?
- **More-than-human actors:**  
Which ecosystems, species, waters, soils, or future generations need representation in decisions?

# Mapping, Power, Reflexivity..

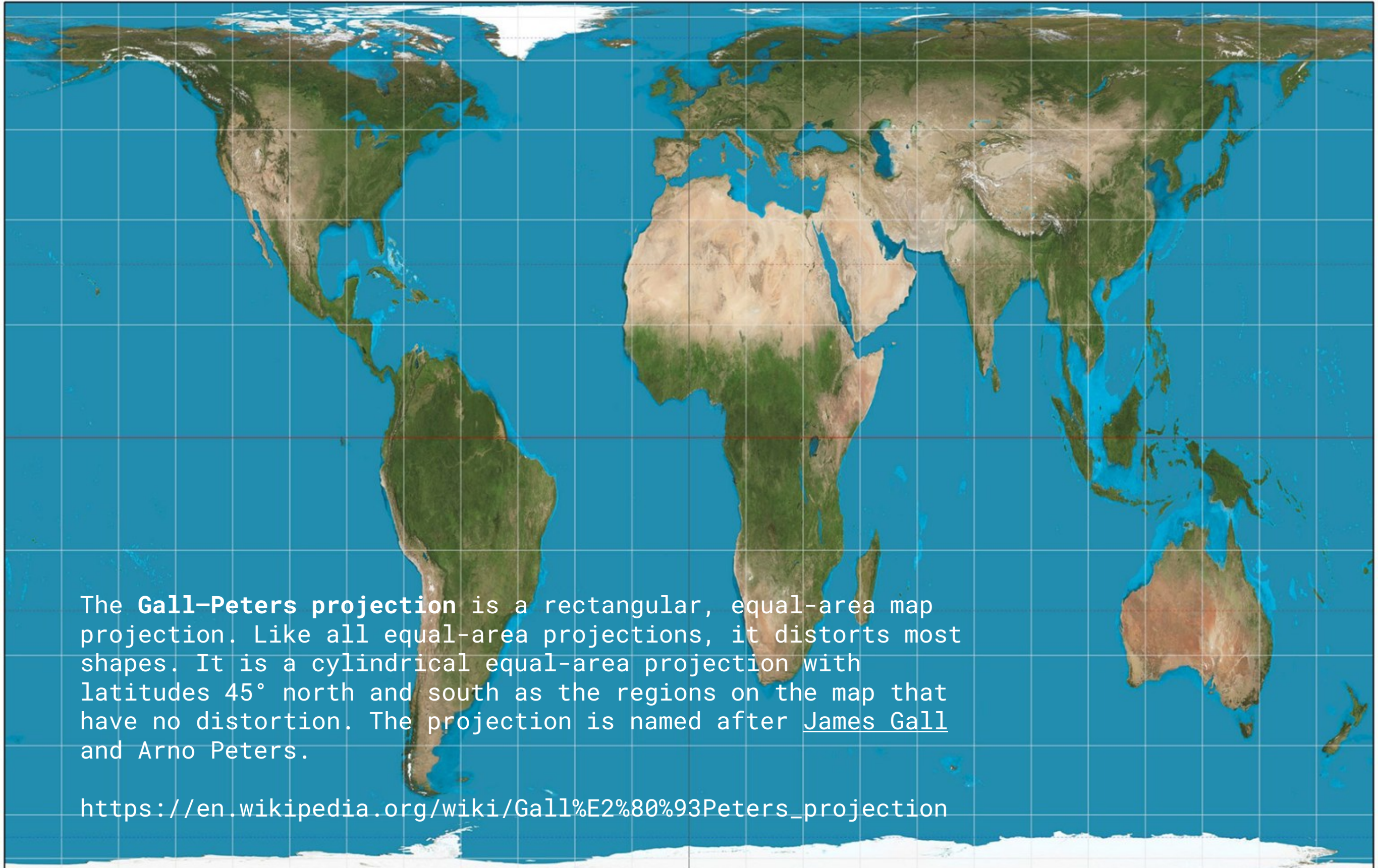
## Some examples

# Mapping is a form of power



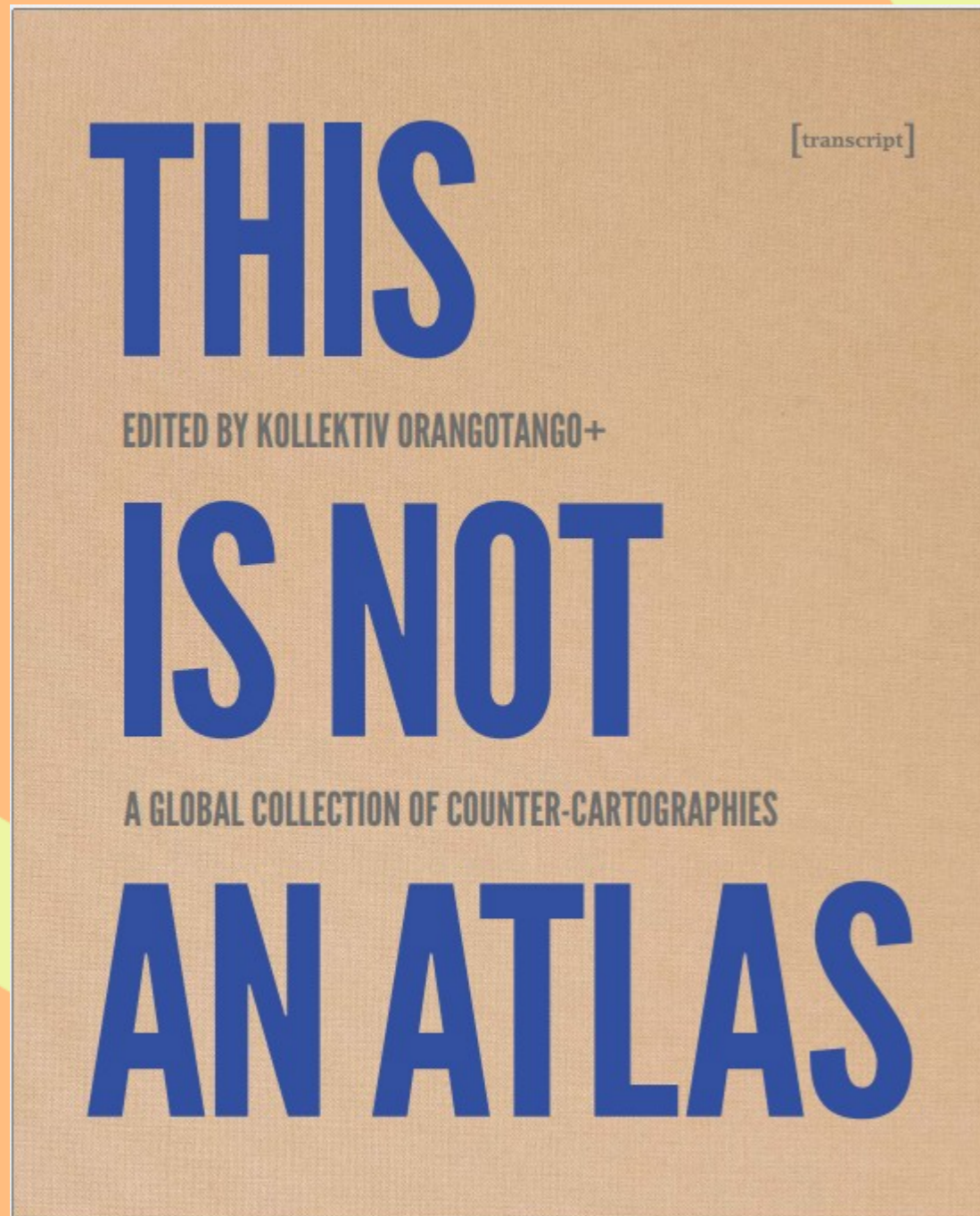
What is wrong about this map in Mercator Projection? (source wikipedia)

# Mapping is a form of power



The **Gall-Peters projection** is a rectangular, equal-area map projection. Like all equal-area projections, it distorts most shapes. It is a cylindrical equal-area projection with latitudes  $45^\circ$  north and south as the regions on the map that have no distortion. The projection is named after James Gall and Arno Peters.

[https://en.wikipedia.org/wiki/Gall%E2%80%93Peters\\_projection](https://en.wikipedia.org/wiki/Gall%E2%80%93Peters_projection)



**Some examples at the interface of design activism and mapping**

**Open access:**

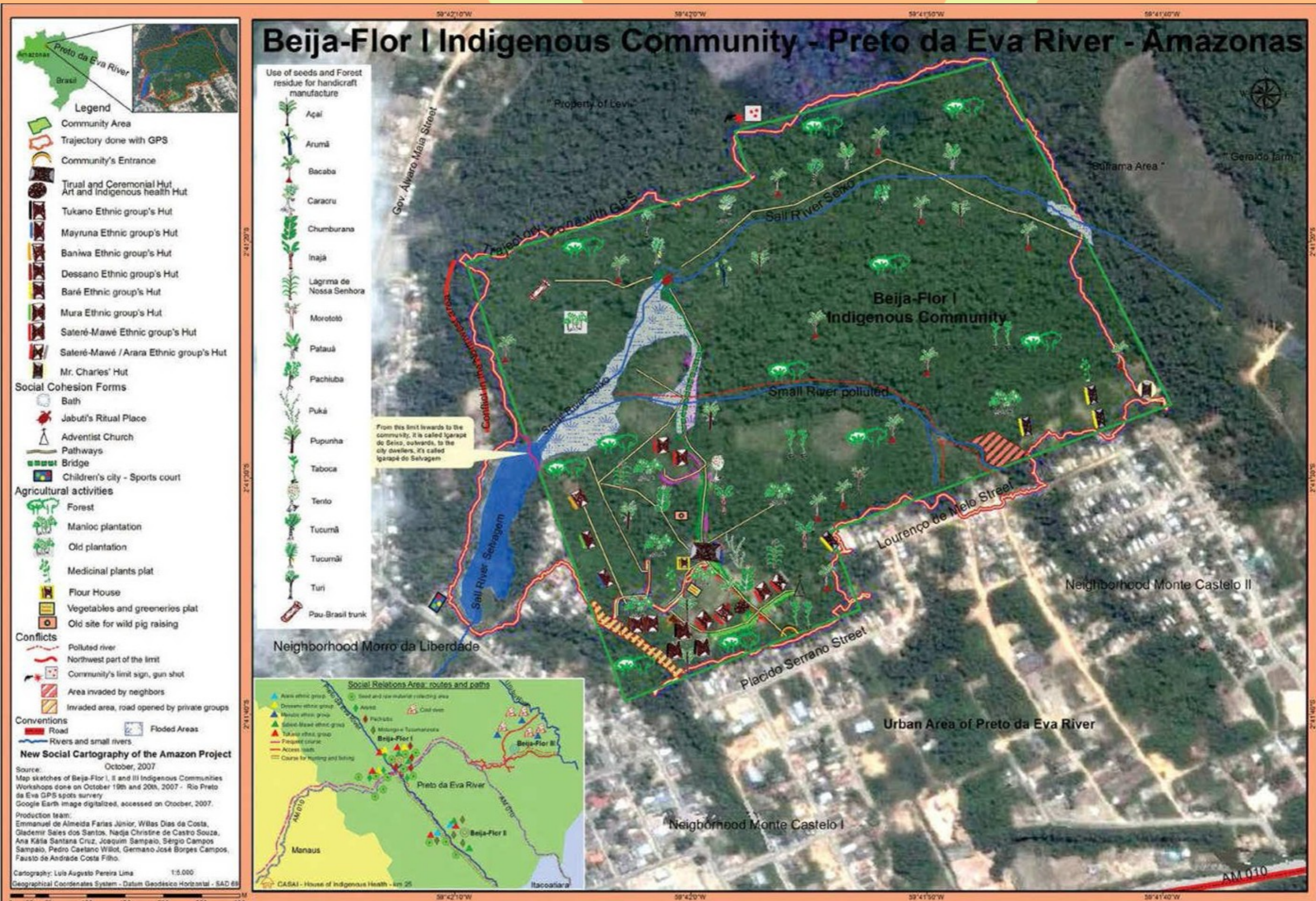
<https://www.transcript-verlag.de/media/pdf/bb/99/16/oa9783839445198rvmViUle0fuFV.pdf>



## A New Social Cartography

Defending Traditional Territories by Mapping in the Amazon

Projeto Nova Cartografia Social da Amazônia – Alfredo Wagner Berno de Almeida,  
Sheilla Borges Dourado, Carolina Bertolini [novacartografiasocial.com](http://novacartografiasocial.com)



## A New Social Cartography

Defending Traditional Territories by Mapping in the Amazon

Projeto Nova Cartografia Social da Amazônia – Alfredo Wagner Berno de Almeida, Sheilla Borges Dourado, Carolina Bertolini [novacartografiasocial.com](http://novacartografiasocial.com)



**A New Social Cartography**  
 Defending Traditional Territories by  
 Mapping in the Amazon  
 Projeto Nova Cartografia Social da  
 Amazônia – Alfredo Wagner Berno de  
 Almeida, Sheilla Borges Dourado, Carolina  
 Bertolini [novacartografiasocial.com](http://novacartografiasocial.com)

# QUEENS COMMUNITY DISTRICT 14

**WATERFRONT ACCESS?**  
 Block 16007 Lot 55  
 The North Shore Waterfront Conservancy of Staten Island worked with the NYC DOT Street Plaza Program to turn City-owned properties on their borough's waterfront turned over to Parks to be the first street plaza project to access tidal wetlands! This bayside DCAS lot on Beach 63rd could follow a similar path!

**A FUTURE JUICE BAR?**  
 Block 15897 Lot 1  
 Alexis, who is working to create the garden on Beach 43rd and Rockaway Beach Boulevard, is interested in using this lot between the road and the elevated subway tracks to host a juice bar housed in a shipping container. Want to help her get started? Contact her at alexissmallwood83@gmail.com or 347-962-9537.

**IN THE MIDDLE OF BEACH 36TH**  
 Block 15952 Lot 13  
 Down runs the daycare across the street from this lot and has been talking to neighbors, the church, and the school nearby to gather support about creating a garden here. Contact her at grenada347@aol.com or 347-299-2533.

**HPD SAYS OK TO TEMPORARY USE!**  
 Block 15861 Lots 1 & 47  
 According to Deborah Morris at HPD, these large lots are great for temporary community use or a site for organizing future involvement with the Arverne East development, since development is not scheduled to start for at least a few years. The students and teachers at the neighboring school would certainly benefit!

**BEACH 45TH STREET COMMUNITY FARM**  
 This space at the corner of Beach and Beach Channel Drive is shared by two neighboring groups that 596 Acres aided in getting access: Edgemere Organic Farm (718-522-2334) and the Bed-Stuy Coalition Against Hunger (718-773-3551). Drop by sometime and say hello!

**THE FUTURE EDMERE COALITION GARDEN?**  
 Block 15834 Lots 38 & 42  
 Alexis is leading a campaign to turn this large, corner lot into a temporary community garden. The community board, the local civic association, and hundreds of neighbors have shown support! Recently, 596 Acres and neighbors hosted a sign-making event that has helped decorate and draw attention to the space. Contact Alexis at alexissmallwood83@gmail.com or 347-962-9537 to get involved!

**CITY OWNED VACANT LAND**

- NYC Dept. of Housing Preservation & Dev. (HPD)
- NYC Dept. of Citywide Admin. Services (DCAS)
- NYC Parks & Recreation
- NYC Dept. of Education
- NYC Dept. of Transportation
- NYC Dept. of Small Bus. Serv.

City Council District Borders  
 Urban Renewal Plan Boundary  
 Community Gardens

DATA SOURCE: <http://livinglotsnyc.org/about/living-lots-nyc-data/>

MAP DESIGN: JOSEPH LAGRAND  
 JUNE 2015

**596 ACRES**  
 LivingLotsNYC.org  
 596acres.org

**This Land Is Your Land**  
 Strategies for Making the Potential Commons Visible and Actionable  
 596 Acres – Paula Z. Segal, Mara Kravitz 596acres.org

# Who is more thirsty?

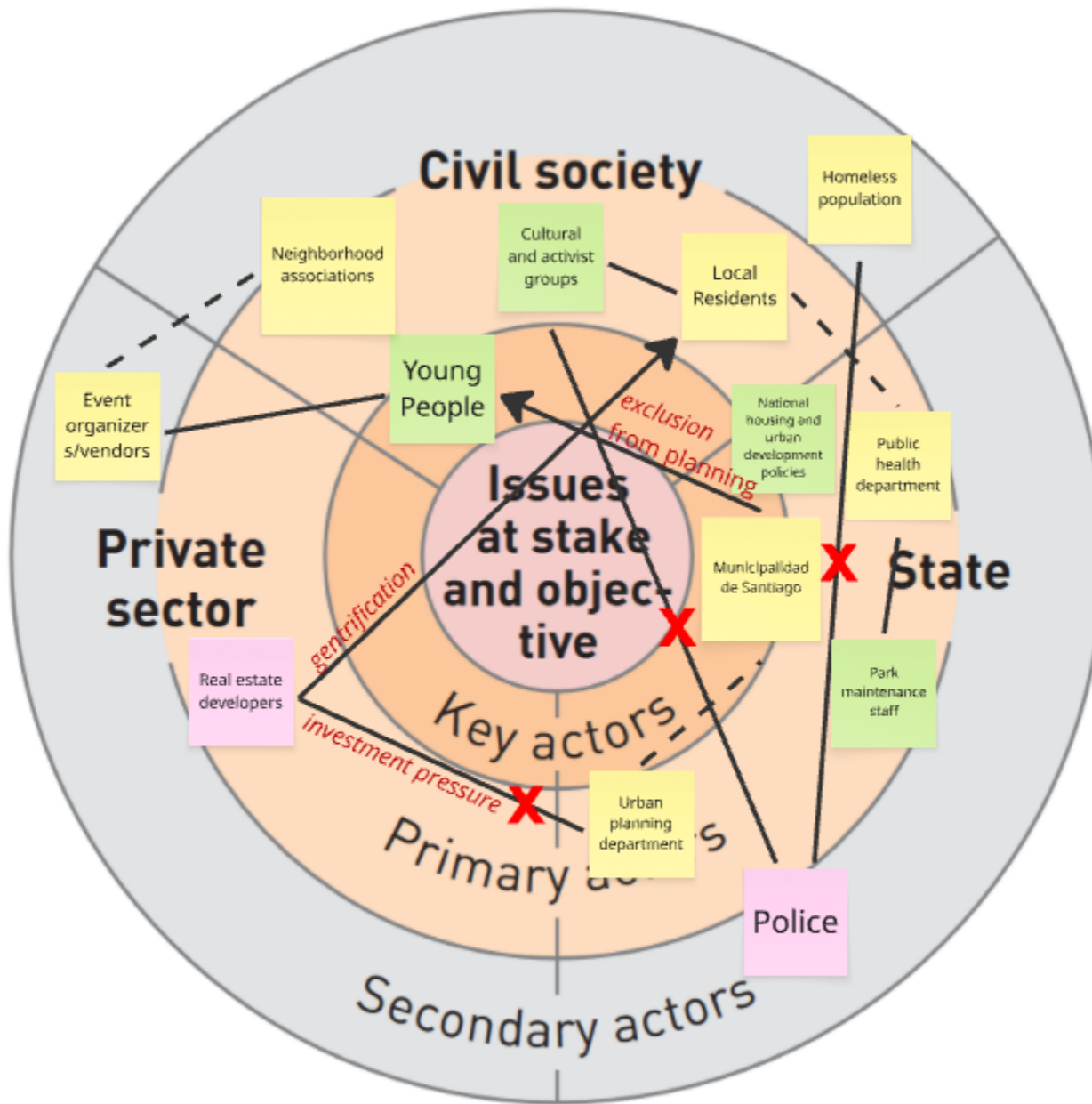
The aqueduct between industrial, agroexport, mining and urban interests



Collaborative Cartography in Defense of the Commons  
 GeoComunes [geocomunes.org](http://geocomunes.org)



# Mapping actors and their relationships



Name your actors & add them to the matrix


Think about the connection between the actors and draw them into the matrix

\_\_\_\_\_ fair relation exists

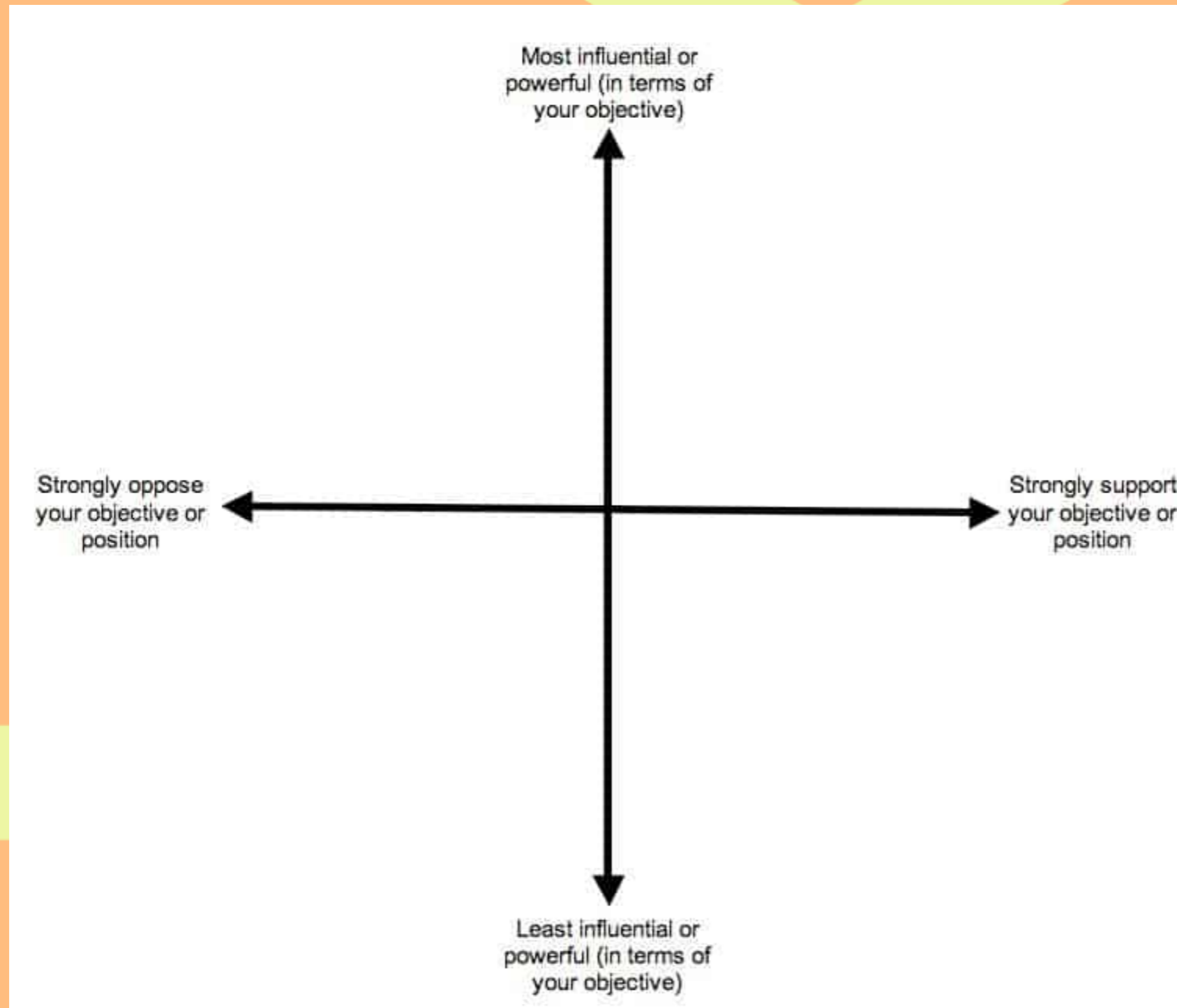
\_\_\_\_\_→ dominance of one actor over another

\_\_\_\_\_X known conflict of interest

----- relation not clear

GIZ, Capacity Works, 2015

# Dimensions of Power Mapping: Simple Power Matrix

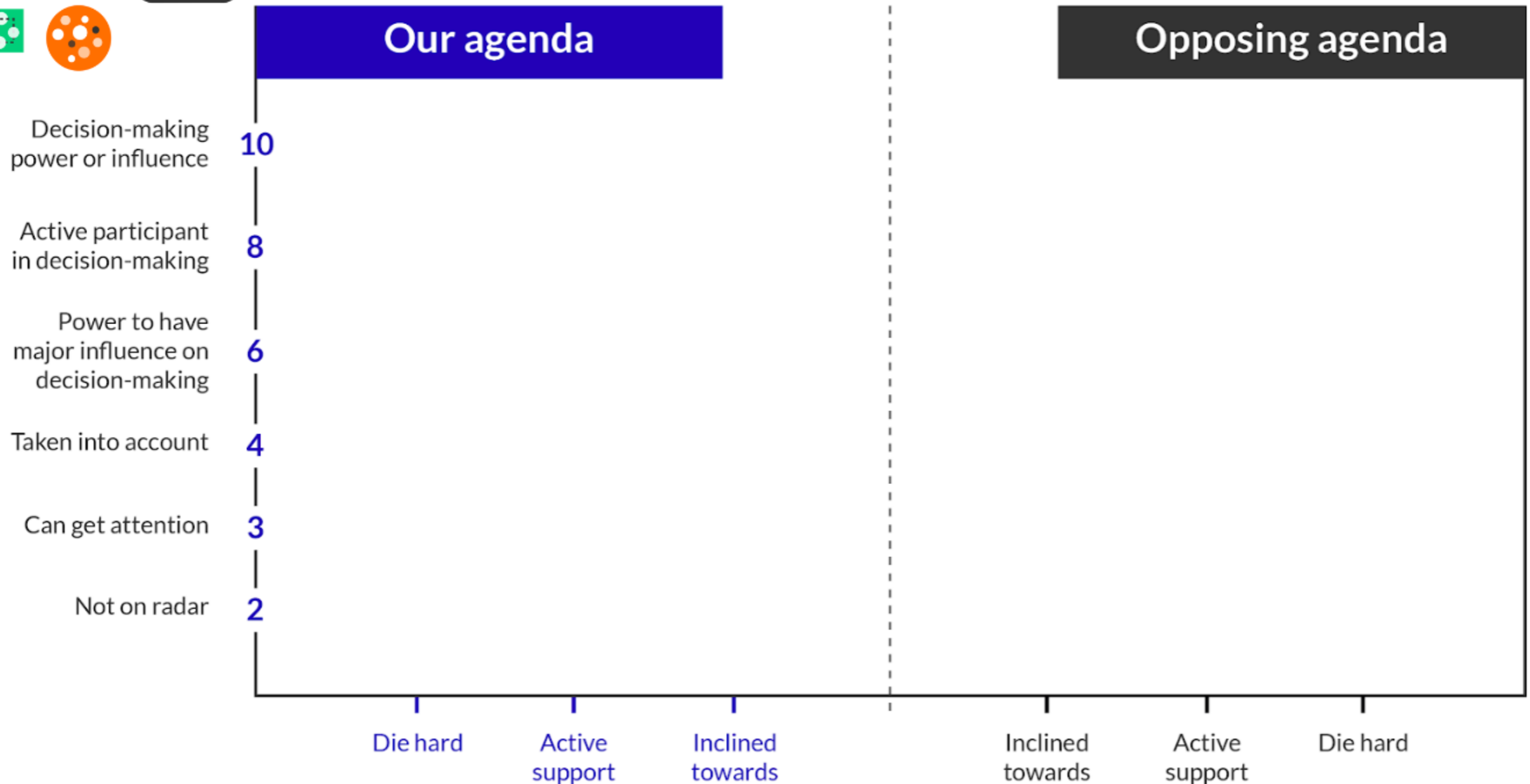


<https://commonslibrary.org/guide-power-mapping-and-analysis/>

# Dimensions of Power Mapping: Understanding Agendas

Decision-makers  
 Influencers  
 Organised groups  
 Unorganised social groups

## Power Mapping Canvas



template provided by <https://pages.thesocialchangeagency.org>

# Nürtingen Wörth Area

An ongoing story of how to change the power map





# WÖRTH: A meadow on the banks of the river Neckar in Nürtingen, Stuttgart Region, South-East Germany in the 1800's



# WÖRTH: Wood industry and storage for +100 years until early 2000



1953, photo from  
Nürtingen archives

# WÖRTH 2005: Real-estate driven planning process starts, supported by the conservative parties



sketch of the plans  
by Amelie Froben

**WÖRTH 2010: European Floods Directive comes into force in Germany, requiring the mapping of all flood risk zones by 2013 - development plan turns out to be unbuildable - but no movement in politics - process frozen**



**WÖRTH 2014: NT14 separates from the local green party in order to fully support an alternative approach to the site.**

**Since then constantly present in the town council with 4 seats.**

**WÖRTH 2020: In the middle of the pandemic, an urban gardening initiative starts, considered as an interim use.**

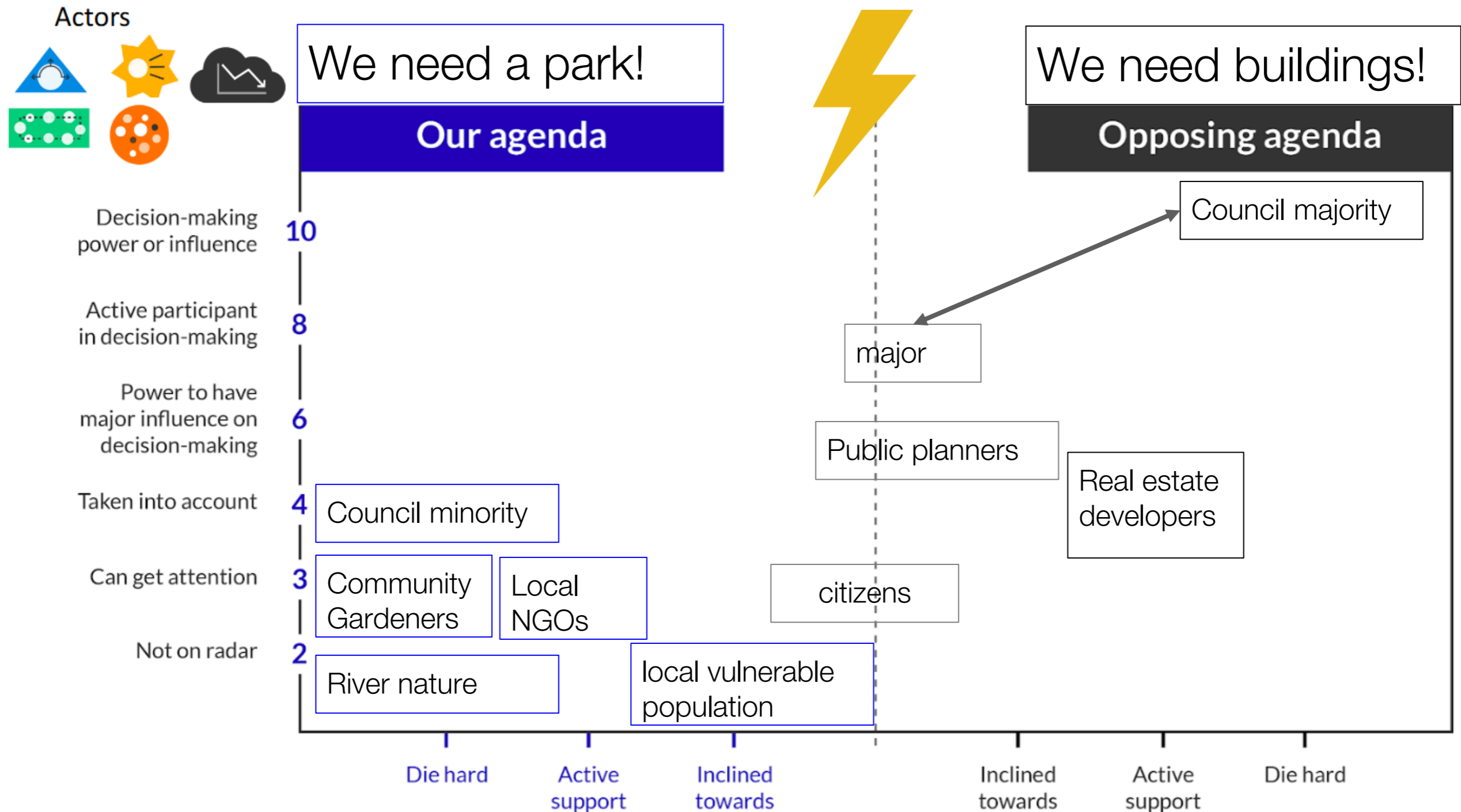




## WÖRTH 2026:

- 'Temporary' urban gardening still continues, originally intended for one year in 2020
- Development plans are on hold because flood management planning is overall delayed and currently prioritized downstream and upstream
- Real estate development downgraded from first to third priority
- The public real estate department sealed other half of the meadow for 'temporary' parking
- Lacking: political will to build a park

# How does this situation translate into a power map?



template provided by <https://pages.thesocialchangeagency.org>

**Story to be continued in *landscape time*...**

# Now back to your working groups



**We are going back to your landscape democracy challenges on the MIRO board:**

**Approx 30 minutes breakout session**

**Introduce your activists & prepare your role play for next week, May 13**

**Your role play can be for 10 minutes + discussion/reflection time. 30 minutes per team.**



OLA

# Debriefing in plenary

# What happens next?



13th May 2026 - Unit 2, Lesson #3

- **Role Play: Democratic Landscape Transformation**
- **Step into the shoes of your activists and imagine a process of changing the power map**

**See you next week!**

# Seminar readings:



- Randy Hester, 2005: [Whose politics do you style?](#)
- Jeff Hou, Deni Ruggeri, Kofi Boone, et al: (2020). [Design as Activism](#), pages 12-15, 29-37 and 56-68.
- Rebecca Solnit, [Hope in the Dark. Chapt. Grounds for hope](#)

+ further websites, manuals and examples

## Also available at:

[https://ledwiki.hfwu.de/index.php?title=Resources\\_and\\_Literature\\_Landscape\\_and\\_Democracy](https://ledwiki.hfwu.de/index.php?title=Resources_and_Literature_Landscape_and_Democracy)

# Enjoy a visual example of design activism



Overnight Pop-up Bike lanes.

DO THE RIGHT LINE (guerrilla bike)

Milan, Italy

<https://www.youtube.com/watch?v=RQnw6Os3kRY>