

Review of Session 2
Landscape & Democracy
What is it about?

A Short RECAP QUIZ





Council of Europe Landscape Convention
(2000) "Landscape" definition:





Council of Europe Landscape Convention
(2000) "Landscape" definition:

"an area, as perceived by people, whose character is the result of the action and interaction of natural and/or human factors."

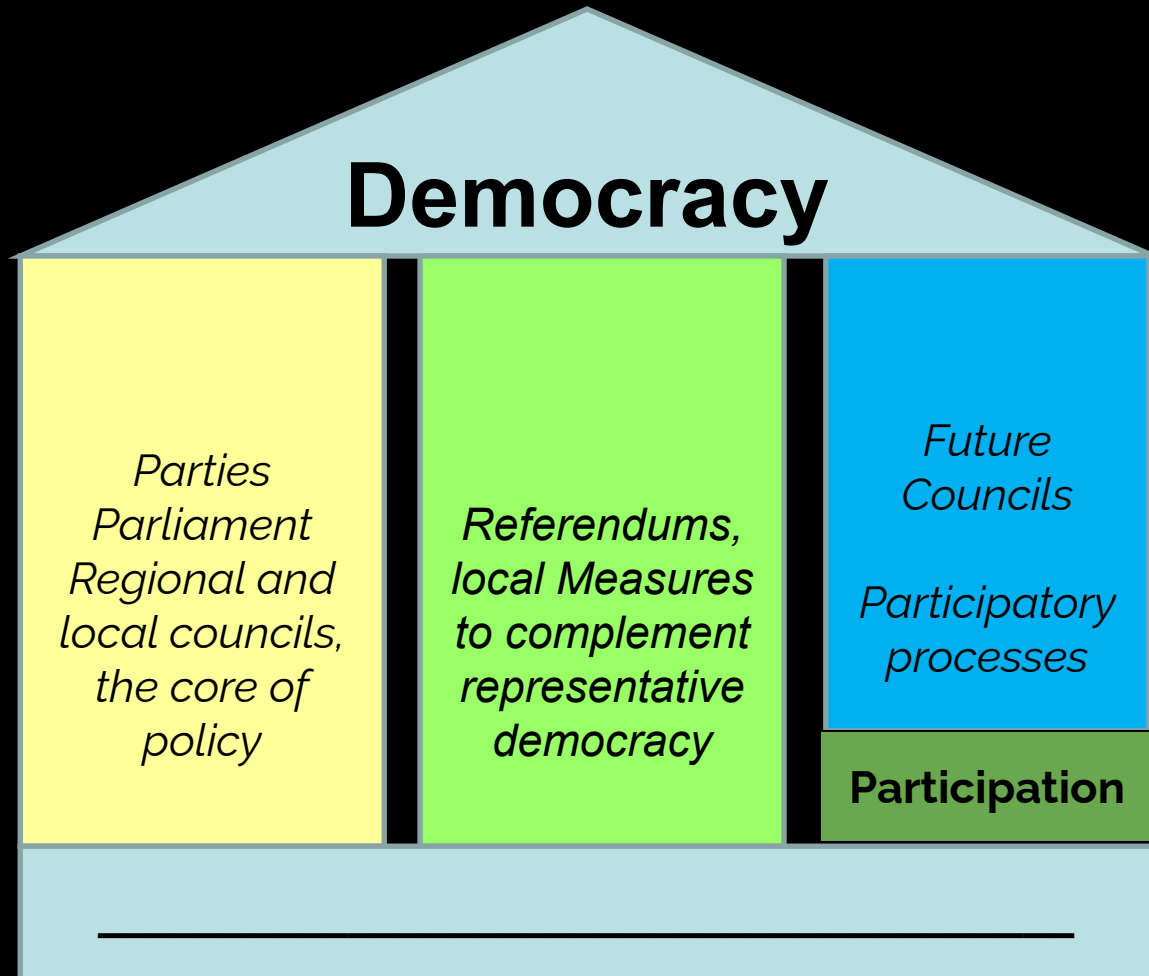




"LANDSCAPE is a key element of individual and social well-being and ... **its protection, management and planning entail rights and responsibilities for everyone.**"

Preamble to the 2000 Council of Europe Landscape Convention





Three columns model of contemporary democracy
Christian Felber (2010) *The economy of the common good*, 109

Democracy

Representative Democracy

*Parties
Parliament
Regional and
local councils,
the core of
policy*

Direct Democracy

*Referendums,
local measures
to complement
representative
democracy*

Deliberative Democracy

*Future
Councils
Participatory
processes*

Participation

Responsibility and engagement of every citizen

Three columns model of contemporary democracy

Christian Felber (2010) *The economy of the common good*, 109

From R2L to Landscape Democracy

- **Landscape democracy** builds on the right to landscape to promote human/ecological health, well being and **empower personal & collective capabilities**

Landscape Democracy is a



landscape democracy is a



practices of participation towards equality, inclusion, healing, reparation, and justice

From R2L to Landscape Democracy

- **Landscape democracy** builds on the right to landscape to promote human/ecological health, well being and **empower personal & collective capabilities**

Landscape **D**emocracy is a **RIGHT**

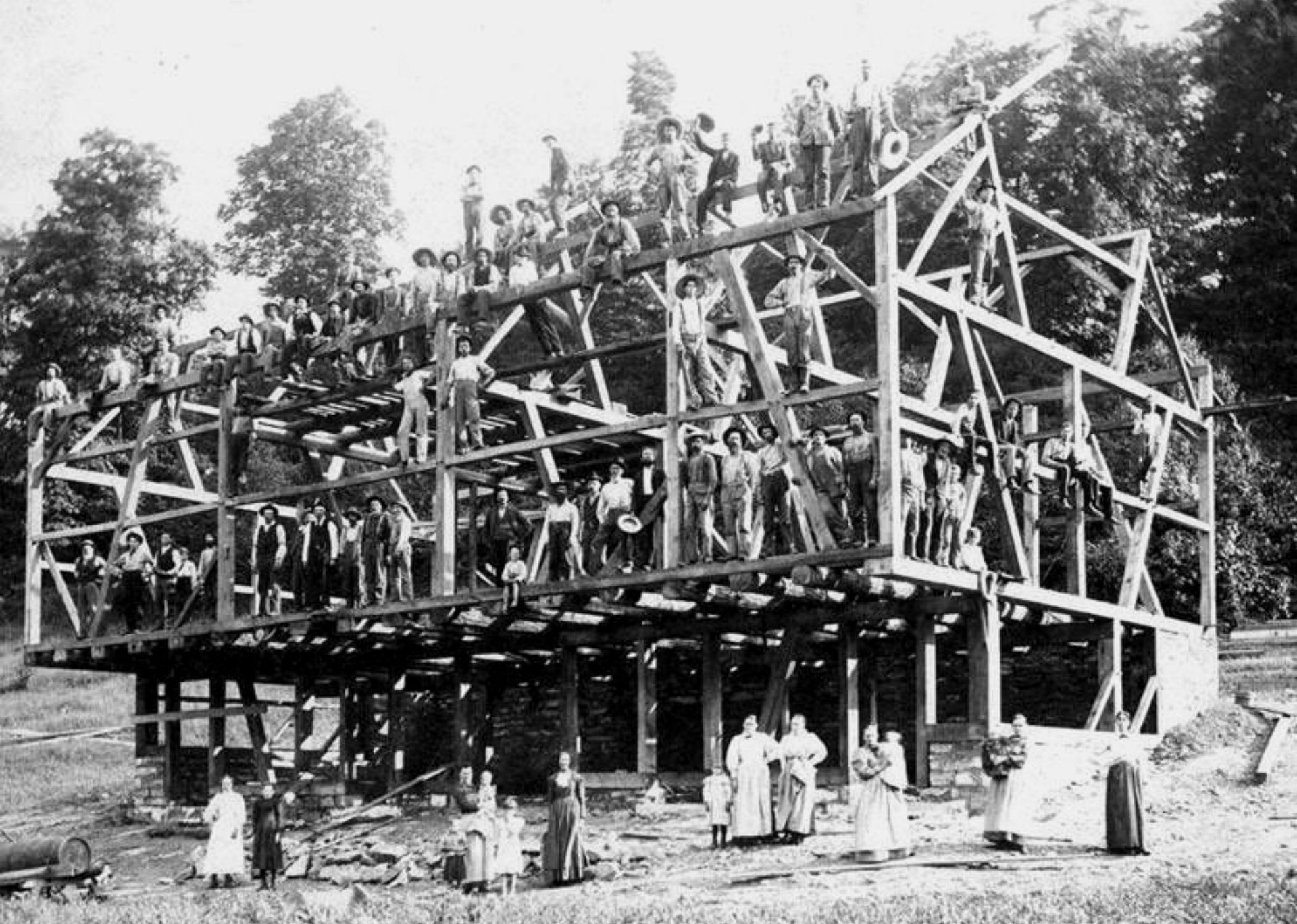
landscape **d**emocracy is a **RESPONSIBILITY**

practices of participation towards equality, inclusion, healing, reparation, and justice

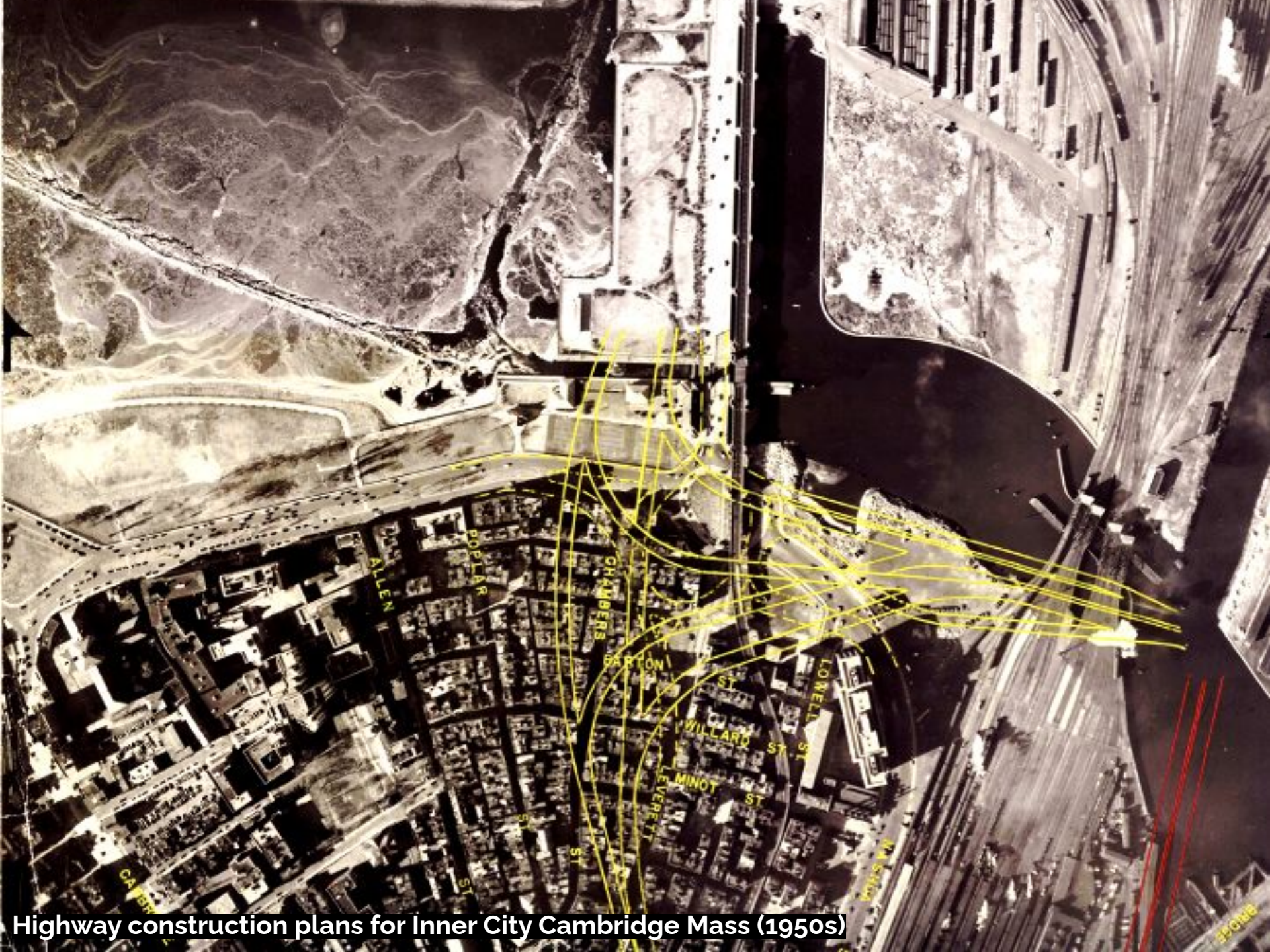
Brief history of Community Participation

Roots of Community Participation

- **Early deliberative democracy**
 - Alexis De Tocqueville (1835) described **collective decision-making** "the art of association" in US society
 - He contrasted it to the hierarchical European society
- **participation=civil rights era**
 - **advocacy planning**: working with the underserved
 - **empowerment** against top-down planning
- **Not just in the US**
 - Ralph Erskine (UK) **urban development** (1970s)
 - Demands for **livability** in **public housing** (Austria, Germany, Scandinavia)



Barn raising in late 1800s US society



Highway construction plans for Inner City Cambridge Mass (1950s)



Randy Hester

North Carolina State Students help save homes from demolition in Chavis Heights



Ralph Erskine: Byker Estate Redevelopment, Newcastle UK (completed 1982)

Community Participation as law

- 1954 US Housing Legislation introduces **advisory groups**
- 1964 US Civil Rights Act
- 1964 US Economic Opportunity Act (EOA) establishes Community Action Programs (CAPs)
- **1970s-80s participation as a business practice**
 - "maximum feasible participation"
 - "New Urbanism" *charrettes*
 - Environmental planning & conservation
 - Historic Preservation
 - **environmental justice**

•



HISTORIC FEATURES VALUE



BEACH QUALITY



INTERTIDAL HABITAT VALUE



SCENIC VALUE (LAND)



EXISTING FOREST QUALITY



STREAM QUALITY



GEOLOGIC FEATURES VALUE



SCENIC VALUE (WATER)



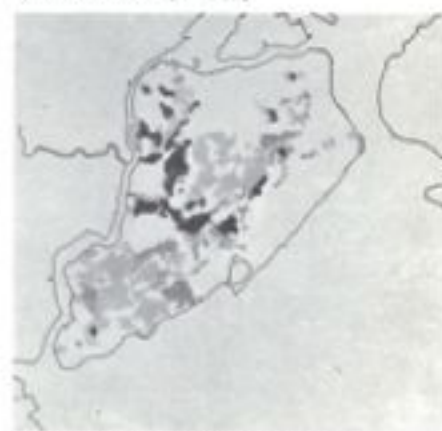
MARSH QUALITY



WATER WILDLIFE VALUE



PHYSIOGRAPHIC FEATURES VALUE



ECOLOGICAL ASSOCIATIONS VALUE



Congress for New Urbanism Charrette (1980)

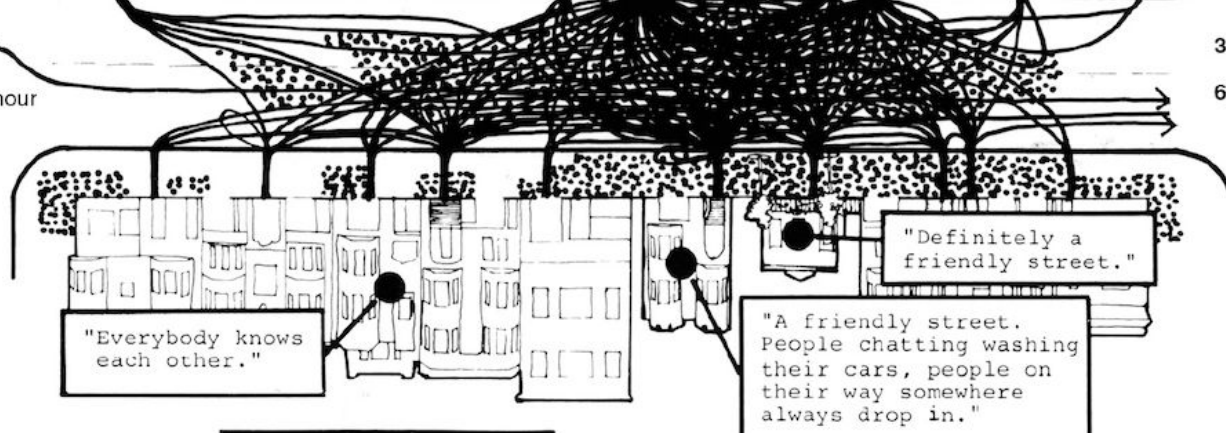


LIGHT TRAFFIC

2000 vehicles per day
200 vehicles per peak hour

3.0 friends per person

6.3 acquaintances

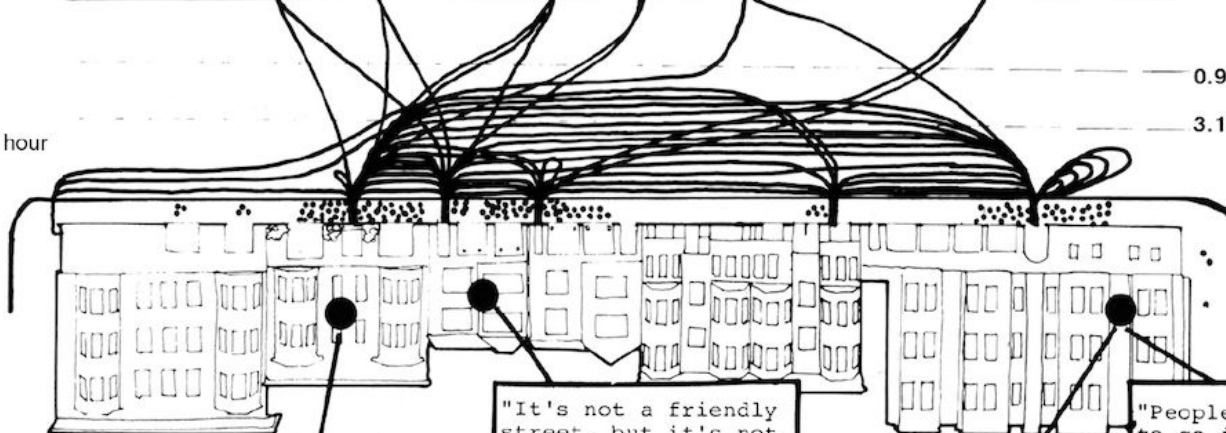


HEAVY TRAFFIC

16000 vehicles per day
1900 vehicles per peak hour

0.9 friends per person

3.1 acquaintances



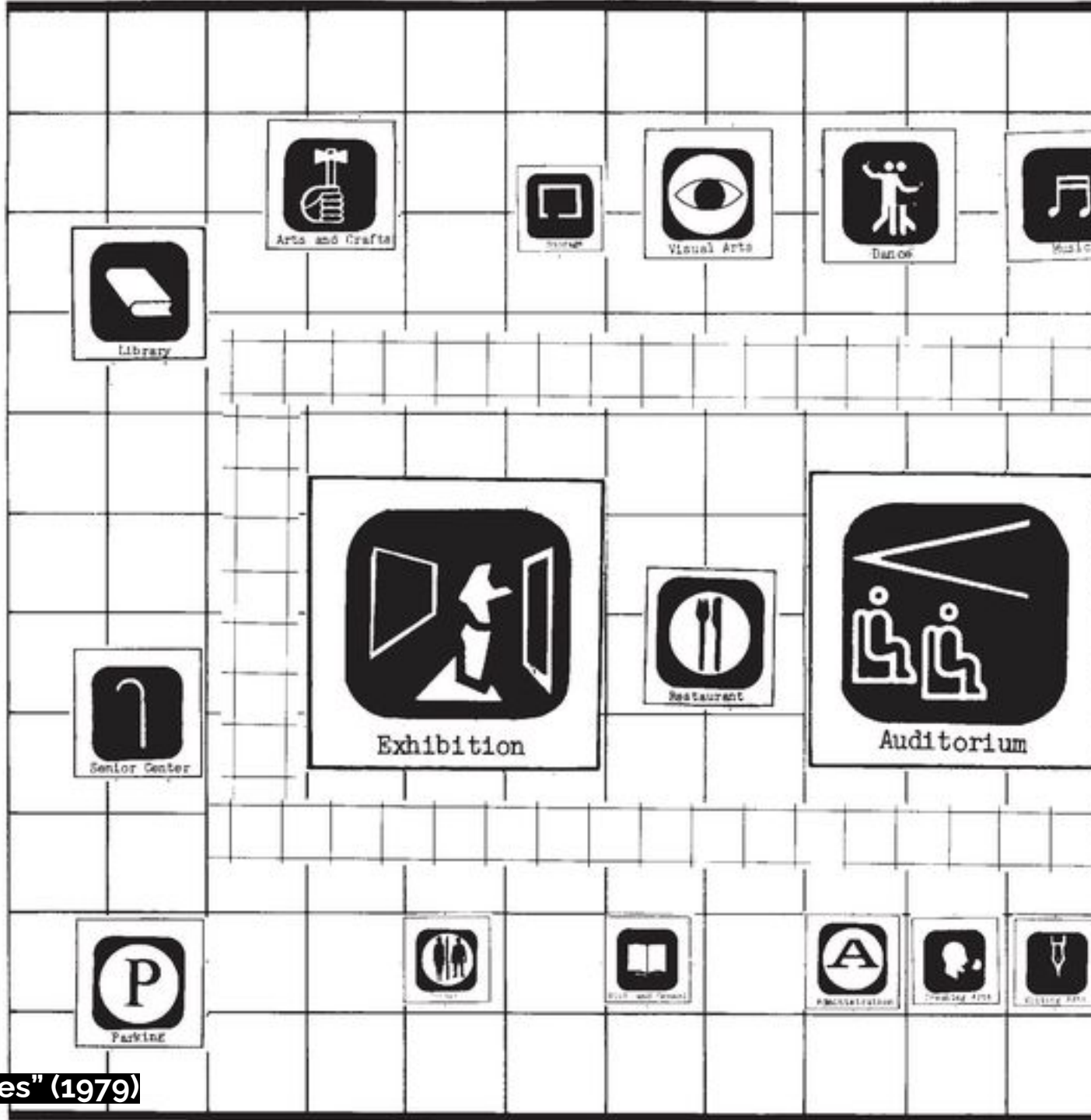
Democratic design+planning

- **Participatory Action Research**
 - people/place challenges are best understood in context
 - Change and values-oriented
- **Democratic design**
 - **Empowerment and regeneration oriented**
 - Collective visioning/goals-setting
 - Scenario-building
 - **Power redistribution**
 - **Shared Governance**
 - **Co-creation/gaming (Sanoff)**
- **Designer as social trustee**
 - political/ethical design
 - **Inclusivity, diversity**
 - **Place-making, Place-keeping**
 - Bottom up **stewardship**
 - James Rojas-'latino urbanism'
 - Jeff Hou-Seattle International District

SPATIAL LAYOUT GAME BOARD

GROUP NUMBER
* 2

Henry Sanoff
DESIGN
GAMES
Playing for Keeps with Personal and Environmental Design Decisions



Henry Sanoff "Design Games" (1979)



1 LISTENING
Place Knowing



2 SETTING GOALS
Place Knowing



3 MAPPING & INVENTORY
Place Knowing
Place Understanding



4 INTRODUCING THE COMMUNITY TO ITSELF
Place Knowing
Place Understanding



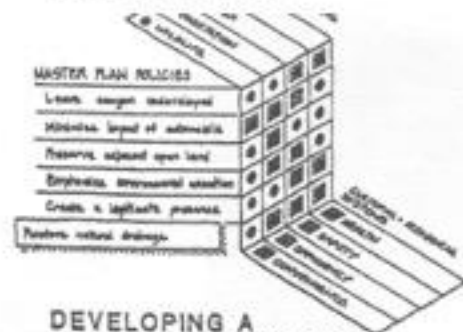
5 GETTING A GESTALT
Place Understanding
Place Caring



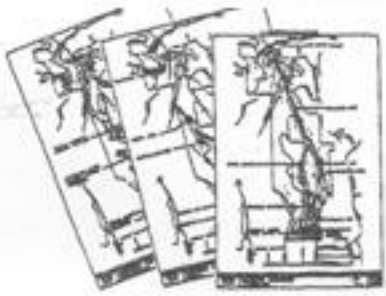
6 DRAWING ANTICIPATED ACTIVITY SETTINGS
Place Understanding



7 IDIOSYNCRASIES INSPIRE FORM
Place Understanding



8 DEVELOPING A CONCEPTUAL YARDSTICK
Place Understanding



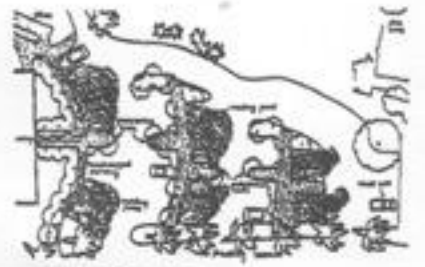
9 SPECTRUM OF PLANS
Place Understanding
Place Caring



10 EVALUATING COSTS & BENEFITS
Place Caring



11 TRANSFERRING RESPONSIBILITY
Place Caring



12 EVALUATION AFTER CONSTRUCTION
Place Understanding



Place-It! Workshops <https://www.placeit.org/>



Jeff Hou's 'Design Buffet' - Seattle's international district

advisory groups

Shared Governance

Co-creation/
gaming

collective
decision-making

participation as
a good business
practice

democratic design

PARTICIPATION

advocacy planning

ethics/common
good

place making/
keeping

livability

environmental
justice

empowerment

power
redistribution

Not all participation is born equal



participation shifts power

participation is a categorical term for citizen power. It is the redistribution of power that enables the have-not citizens, presently excluded from the political and economic processes, to be deliberately included in the future. In short, it is the means by which they can induce significant social reform which enables them to share in the benefits of the affluent society [...]

participation without redistribution of power is an empty & frustrating process for the powerless."

Arnstein, S. (1969) "A Ladder of Citizen Participation," *Journal of the American Planning Association*

participation: a new tyranny?

“An organizational model of participation ignores the fact that many interactions between people also take place outside formal organizations, that the interactions of daily life may be more important in shaping cooperation than public negotiations.”

Stories from Vac (Anna)

The Solidarity Landscape Living Lab (2021-Present)



A Caring Community



Villaggio Solidale (*Solidarity Village*)

A 1.8 acre/0,7 ha **social housing project** in which domestic spaces, residents' services, collaborative spaces and green areas coexist into a **system in support of well being and peaceful living for the frail.**

A project conceived and implemented by the FA Consortium (Famiglie e Accoglienza), a consortium of social cooperatives from Bergamo

Communities of Practice

Single parent families

> 40 families - 120 people (50 minors)

Fragile Adults

20 people

New Over 18s

12 people

Participants in the Live project

14 people

Volunteer Families inhabitants

7 families - 18 people

Children in Community

> 30 children

Autonomy Training Service (SFA)

20 people

People in work placements

15 people

Professionals and volunteers

>50 people



2018

128 residents+staff

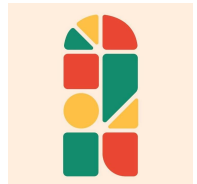
2024

300+ residents+staff

Project Partners



Cooperative Ortofrutticola Biologica



An Iterative Process

Solidarity Landscape Living Lab PAR Methods & Phases

Partnerships

Non-Heirarchical

Action-Oriented

Value-Driven

Transdisciplinary

Phase 1
Methods

Concepts
Theories

Phase 2
Methods

Concepts
Theories

MLA
Theses

Phase 3
Methods

Concepts
Theories

Phase 4
Methods

Concepts
Theories

Landscapes of the Heart:
Guided meditation & drawing activity

- Biophilia
- Ecology
- Solidarity
- Well-being

Landscape Architect for a Day:
Co-design

- Agroecology
- Biophilia
- Ecology
- Solidarity

Biking
Fieldwork

- Agroecology
- Biophilia
- Climate
- Ecology

Tarantasio Garden:
Prototype

- Capabilities
- Agency
- Solidarity

Dream Garden Collage

- Biophilia
- NBIs
- Solidarity
- Well-being

Nature Scavenger Hunt:
Foraging & nature art

- Biophilia
- Climate
- Conservation
- Ecology
- NBIs
- Well-being

Deep Listening

- Agroecology
- Biophilia
- Ecology
- Solidarity
- Well-being

Spreading the Seeds of a Solidarity Landscape: Co-Creating a Biophilic Landscape & Training Curriculum
by Mary Christensen

Designing an Accessible Agricultural Garden: Connecting Solidarity & Agroecology
by Patrick Boyle

Childhood Landscapes:
Guided meditation & drawing

- Biophilia
- Ecology
- Solidarity
- Well-being

Nature Activities:
Leaf rubbing, pollinator lesson, matching game

- Biophilia
- Ecology
- NBIs
- Solidarity
- Well-being

Solidarity Mapping

- NBIs
- Solidarity
- Well-being

Asilo Vecchio
Co-design

- Solidarity
- Agroecology
- Ecology

My Lurano Nord:
Co-design

- Biophilia
- Ecology
- Solidarity
- Well-being

Goal Setting

- NBIs
- Solidarity
- Well-being

Solidarity Landscape Cards:
Prototype

- Agroecology
- Biophilia
- Climate
- Conservation
- Ecology
- Solidarity
- Well-being

reflecting

planning

acting

LED2LEAP Intensive Lucca 2022

OLA Intensive Ravenna 2023

OLA Intensive Athens 2024

OLA Intensive Vac 2025

S. L. Living Lab (Aug 2022)

S. L. Living Lab (Jul 2023)

Workshop (Jan 2024)

S. L. Living Lab (June 2024)

S. L. Living Lab (June 2025)

Project Public Launch Winter 2022

Solidarity LS Ambassador Course 2023/2024

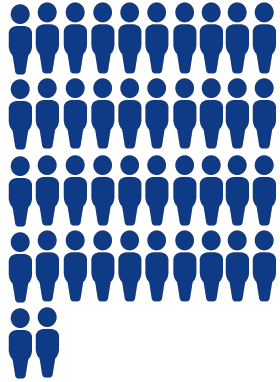
Website Fall 2024

Video Winter 2024

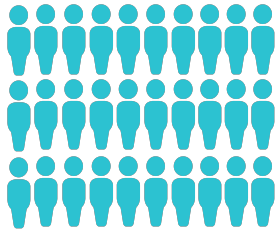
Solidarity Landscape Cards Summer 2025

Making Connections

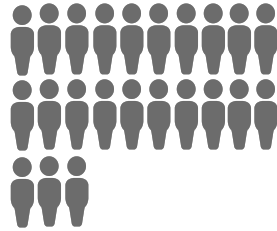
52 Villaggio
Solidale residents



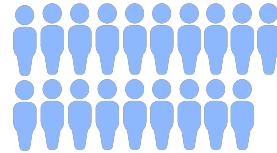
30 Consorzio FA
Staff



23 Scuola per lavorare
nell'Agroalimentare
students and staff



19 CSE
participants



15 Cooperative
Partners



15 University of
Maryland students



14 Community
members



11 Autonomy
Training Services
(SFA)



6 Project L.I.V.E.
participants



4 Municipal
leaders



3 Corporate
volunteers



3 FIEB Board
members



2 UMD
Faculty



2 University
student/staff



Total Solidarity Living Lab Participants (2022-2025) = 199

Participatory
Methods :

**Understanding
Perceptions**

Listening

A group of people are gathered in a bright, modern room. In the foreground, a person is seated in a wheelchair, wearing a VR headset and a microphone. They are looking towards a group of five people standing in a doorway. The group consists of three men and two women, all appearing engaged and attentive. The room has large windows and a clean, minimalist aesthetic.

Strengthening bonds

Empathy & connections

Understanding perceptions



Reflecting on Inner Landscapes



VERONICA
INTELIS

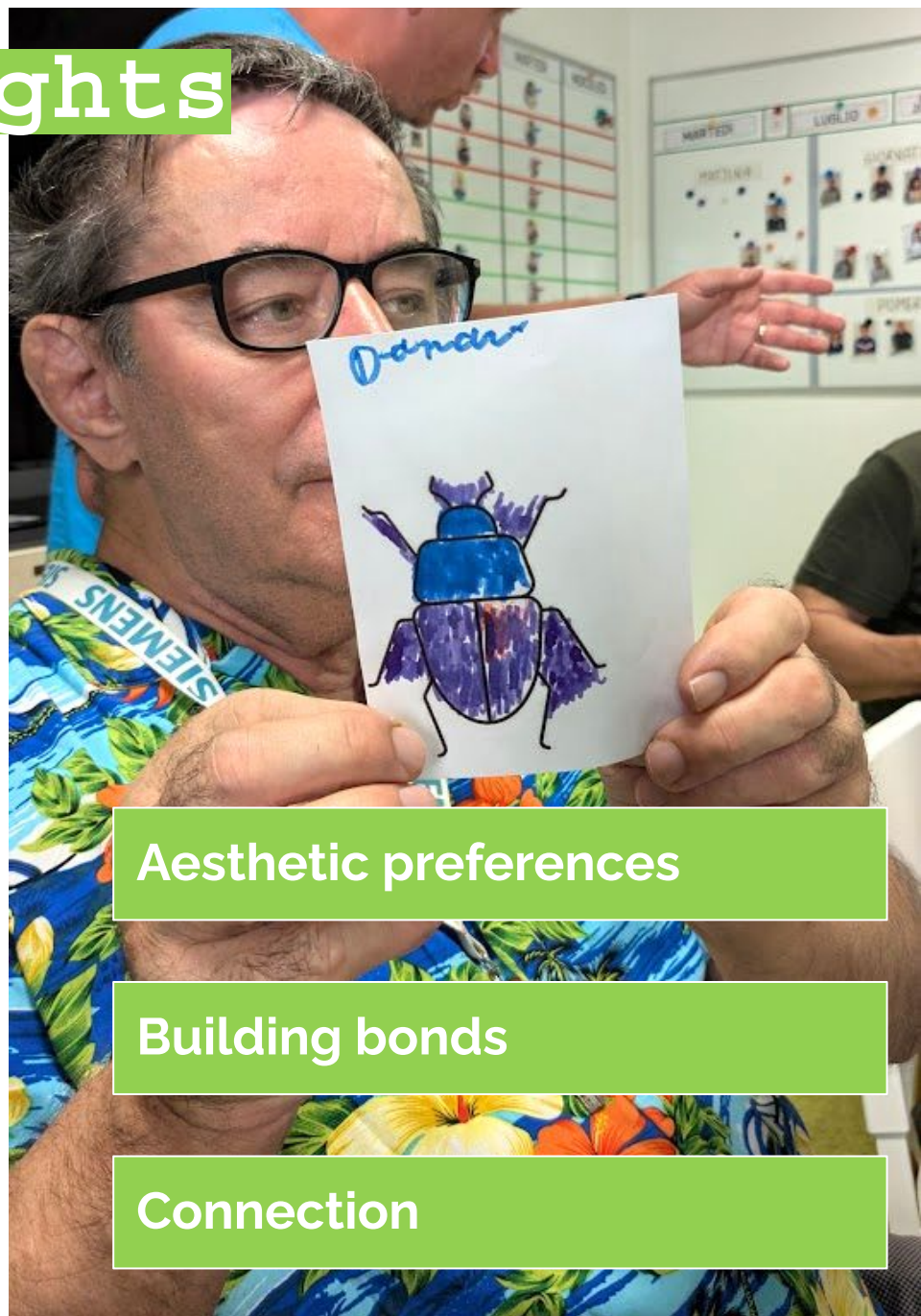


Understanding perceptions

Landscape archetypes

Shared experiences

Aesthetic Insights



Aesthetic preferences

Building bonds

Connection

Participatory
Methods :

Co-Creation

Landscape Architecture for a Day



Collaborative visioning

Understand challenges

Expanding our focus

Solidarity Mapping



Nature-based interventions

Practicing solidarity

Expanding partnerships

Co-Design



Empowerment

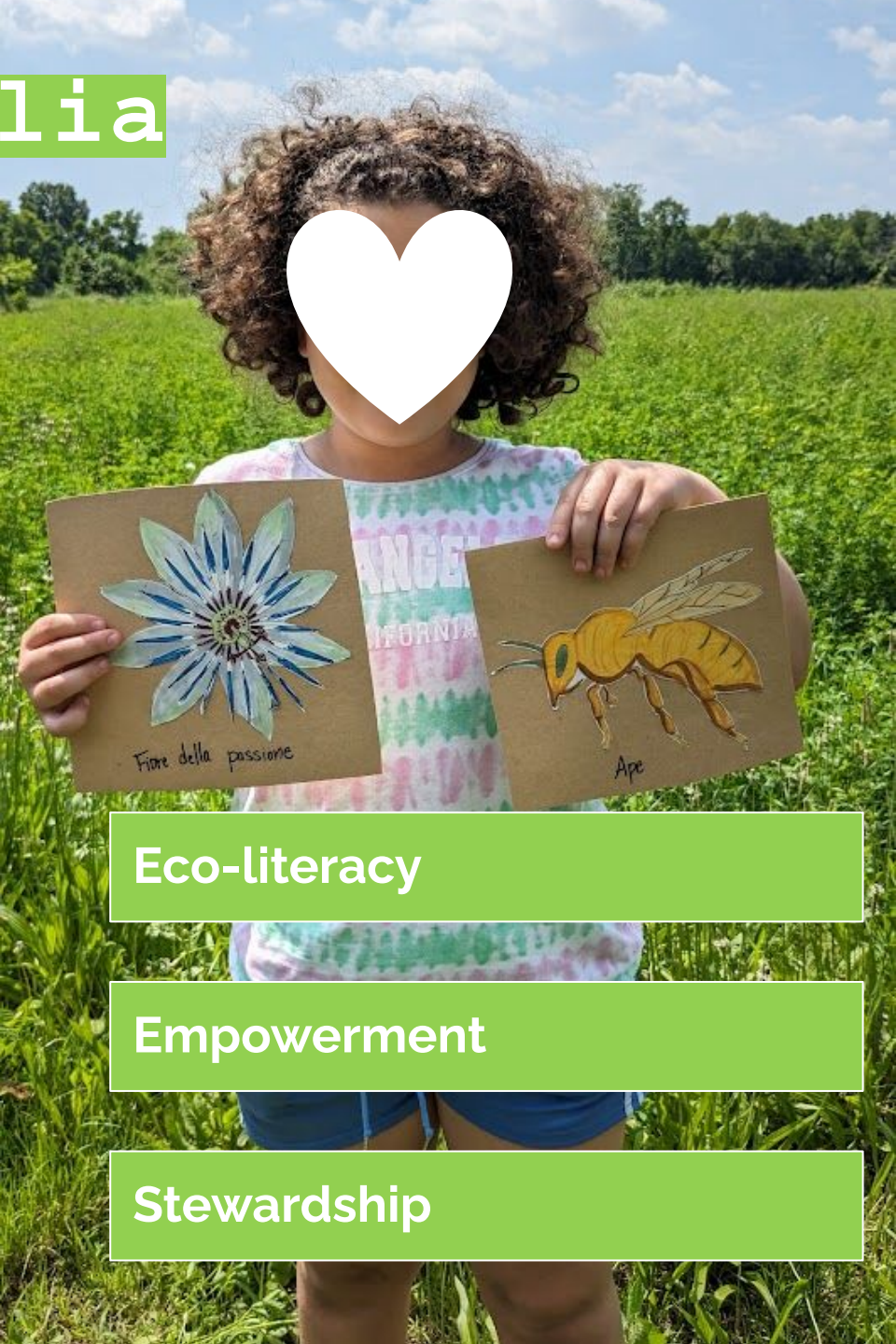
Challenging assumptions

Co-authorship

Participatory
Methods :

Taking Action!

Testing Biophilia



Eco-literacy

Empowerment

Stewardship

The Art of Nature



Eco-literacy & foraging

Nature aesthetics

Stewardship

Prototyping Change

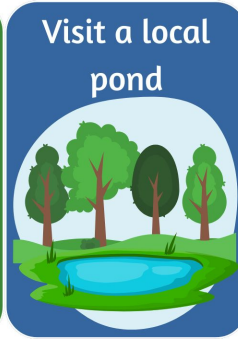
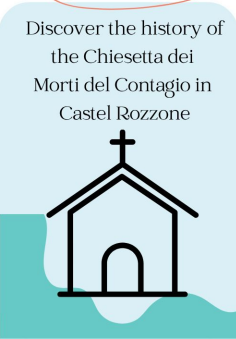
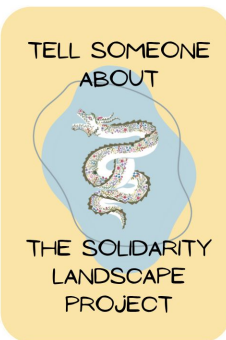
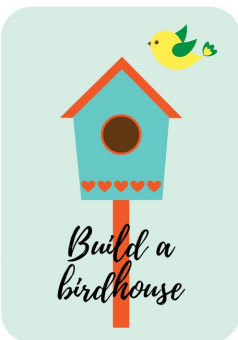


Action & advocacy

Empowerment

Stewardship & solidarity

Activating Solidarity & Stewardship



Solidarity

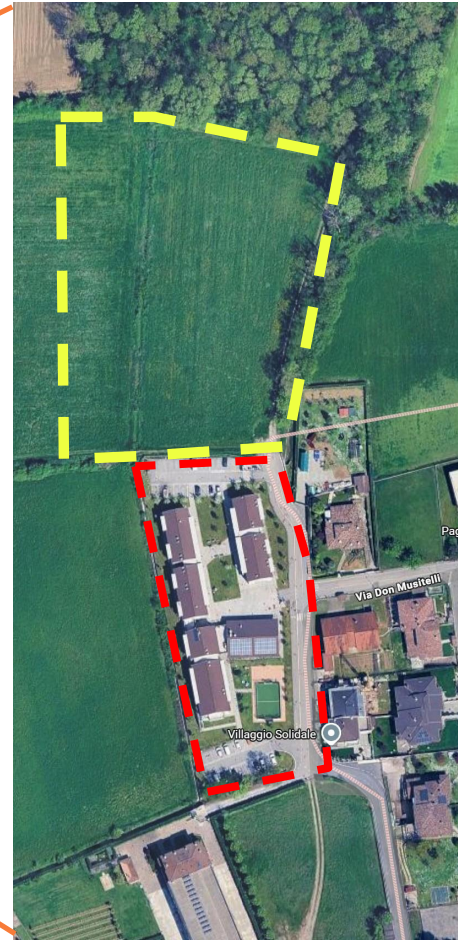
Stewardship

Nature-based interventions

Empowerment

**This
Summer's
Workshop**

Villaggio Solidale Expansion



— — — — — Villaggio Solidale

— — — — — Expansion Site

Villaggio Solidale Expansion



What are your next steps?

Assignment from part A:

Building your conceptual understanding of democratic landscape transformation. This is a cross-cutting, two-part assignment.

- Part 1: **Landscape manifesto.** In your manifesto, you will express your very personal and individual beliefs and understanding of landscape democracy. You can use any medium you like. Your manifesto should include visual evidence (photography, graphics, etc) of landscape democracy challenges in your context and/or home country. You are encouraged to refer to your everyday environment. We will share the manifestoes on the seminar wiki. **Due date: 22.04.26**
- Part 2: Working in transnational trios, express your personal understanding of the **relation of landscape and democracy** in the form of a **concept map with linking words** or any other diagrammatic representation. Please make your maps very visual and not just verbal.
Think critically about why one map differs from another.

Due date: 17.06.26 (last session of seminar).



OLA

Add your manifesto on our MIRO board:

https://miro.com/app/board/uXjVG1q88D0=/?share_link_id=344983403490

The screenshot shows a Miro board interface. At the top, the browser address bar displays the URL: https://miro.com/app/board/uXjVG1q88D0=/?share_link_id=344983403490. The Miro logo and the board title "OLA Seminar 2026 - Process Board" are visible in the top left. A central text box contains the following information:

Collecting your Landscape Democracy Manifestoes

In your manifesto, you will express your very personal and individual beliefs and understanding of landscape democracy. You can use any medium you like. Your manifesto should include visual evidence (photography, graphics, etc) of landscape democracy challenges in your context and/or home country. You are encouraged to refer to your everyday environment.

Below this text, there are eight rectangular boxes arranged in a 2x4 grid. Each box is designed for a participant to write their manifesto. Each box contains the following text:

Your name:

Your manifesto:

The boxes are color-coded: the top-left is pink, the top-middle is yellow, the top-right is white, and the bottom row consists of four yellow boxes. A vertical toolbar on the left side of the board contains various Miro editing tools such as selection, eraser, and text tools.