



**Use your skills.
Be a changemaker.**

Community Learning for Local Change

A seminar on community-based social innovation and entrepreneurship

International Online Seminar: **Session 1**

Tuesday, 24th of March 2026, 16 30 – 18 00 CET

Agenda

- **Introduction** to the project and the seminar
- Overview of **seminar process, activities** and **assignments**
- Breakout sessions: Nürtingen & Bucharest Teams

Interactive Poll #1

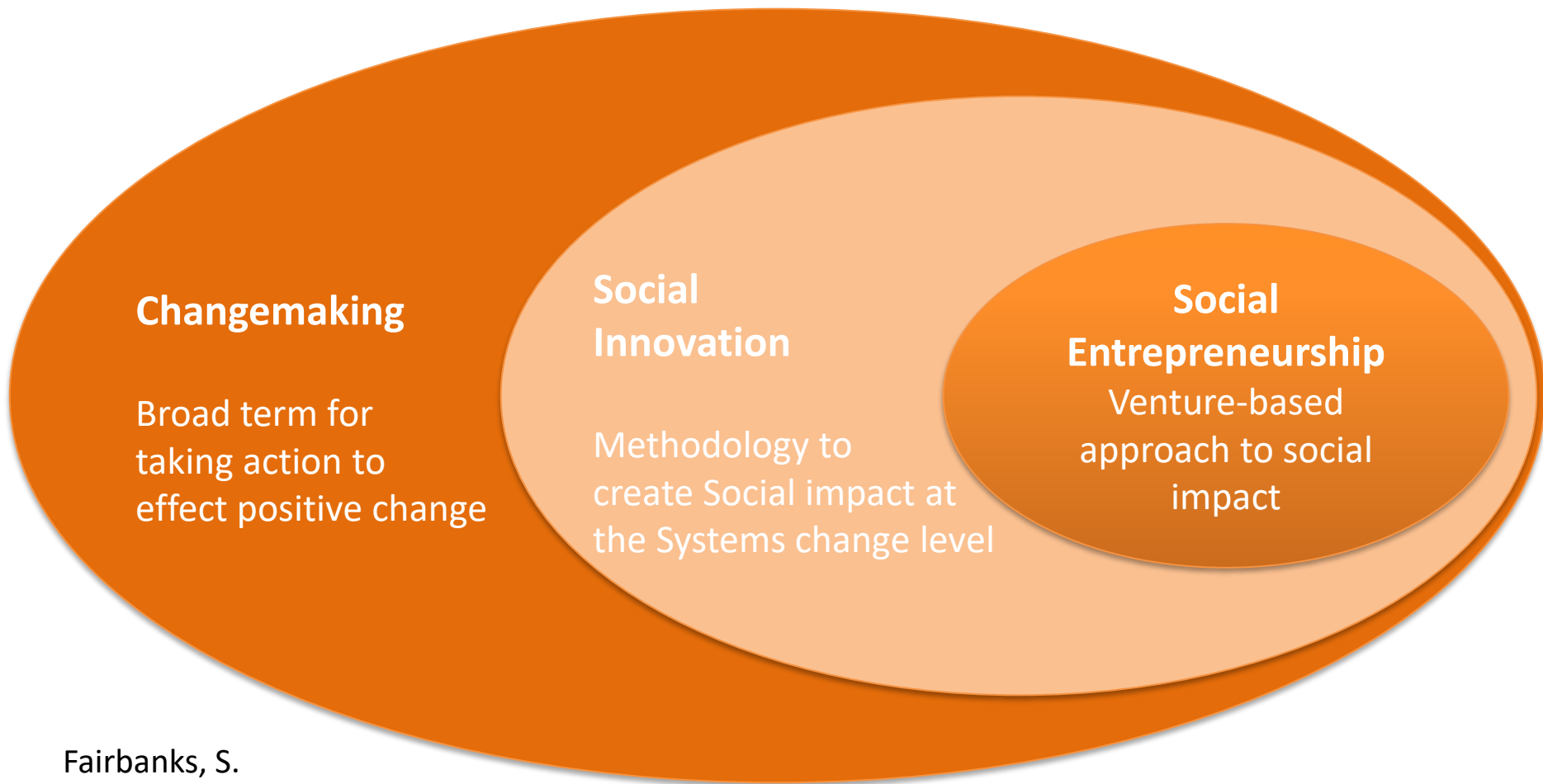
Please scan and go to our Menti:



Or open this link:

<https://www.menti.com/al89ekrs3js8>

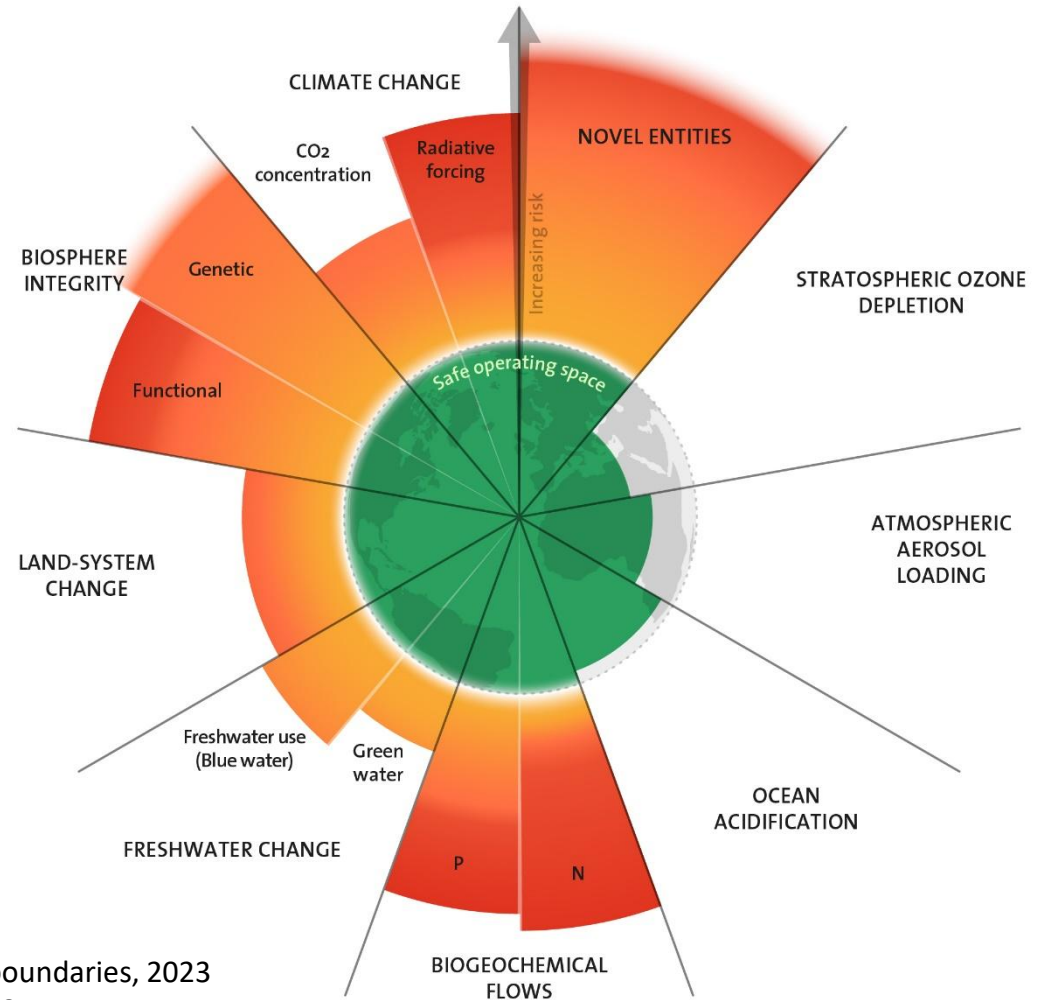
Concept Map of Changemaker Terminology



Fairbanks, S.

The Reality of Terminology, 2019

We are living far beyond the capacity of our planet



Planetary Boundaries

As conceived by the Stockholm Resilience Centre

September 2023: 6 of 9 boundaries crossed

Richardson et al: Earth beyond six of nine planetary boundaries, 2023
<https://www.science.org/doi/10.1126/sciadv.adh2458>

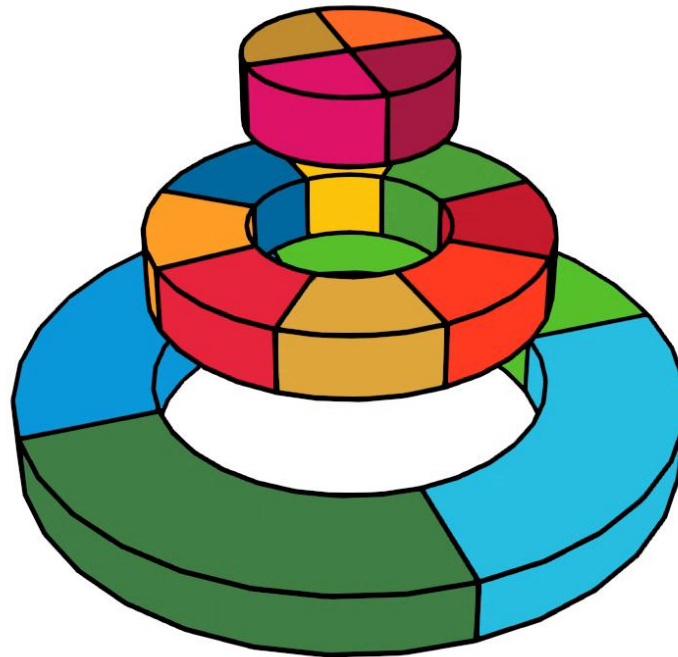
This what we usually get to see:



UN Sustainable Development Goals <https://sdgs.un.org/goals>

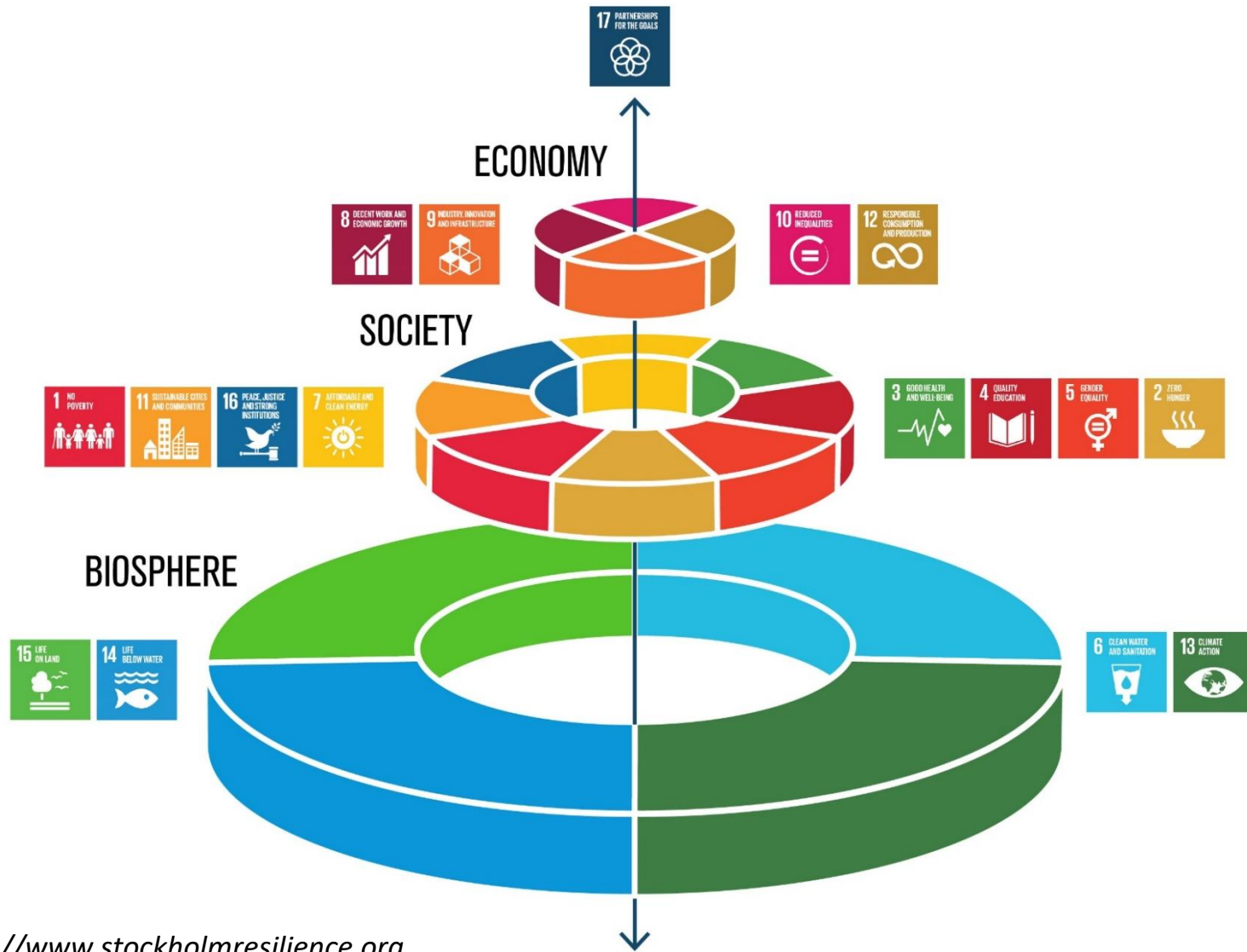
The global agenda needs priorities

The Sustainable Development Goals



<https://www.stockholmresilience.org/research/research-news/2016-06-14-the-sdgs-wedding-cake.html>

Working on our global agenda



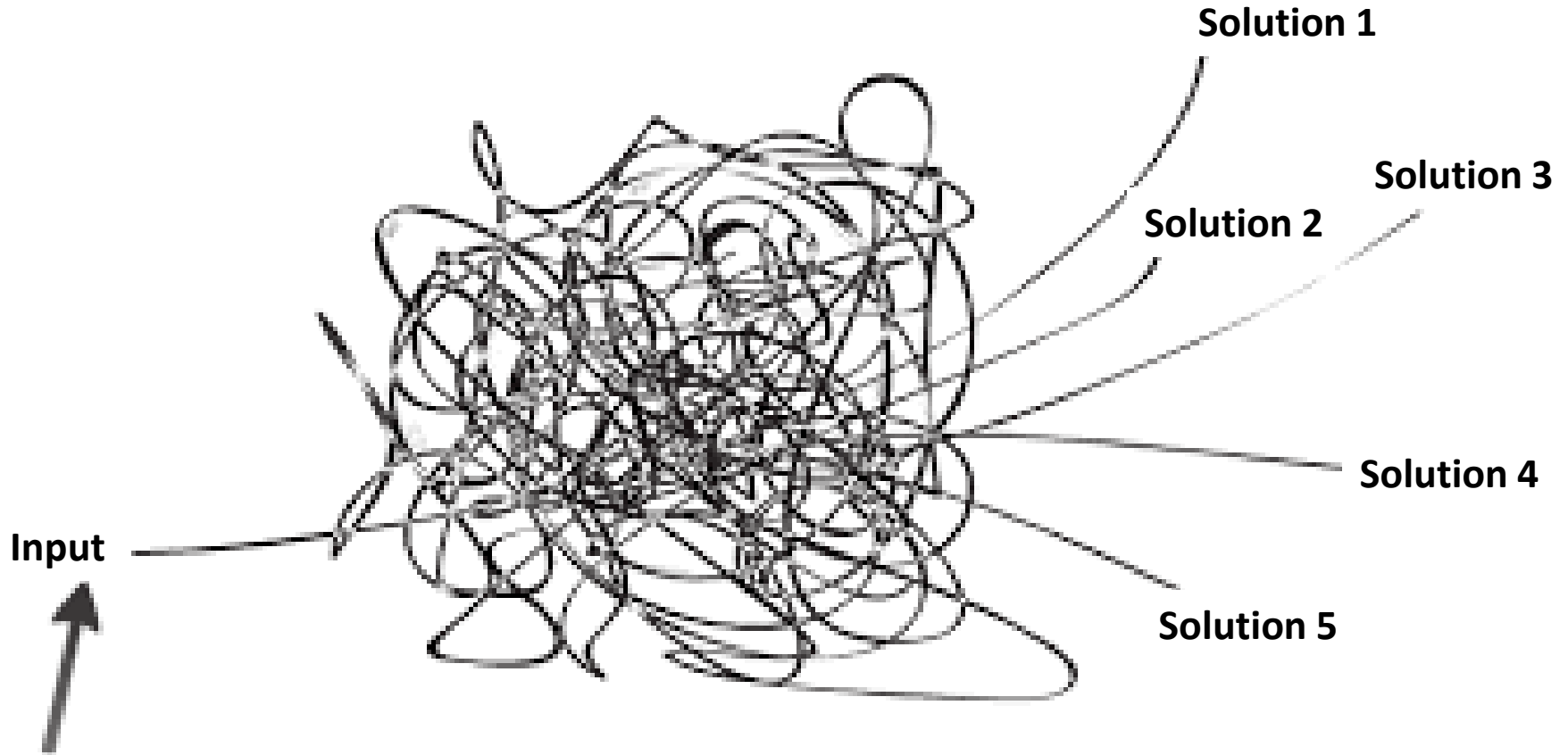
<https://www.stockholmresilience.org>

Getting ready for your own agency



Green Competence Framework of the European Union (2022)

Therefore, we offer you this:



Some educators call this: **Disorientation as a learning objective** Good luck!

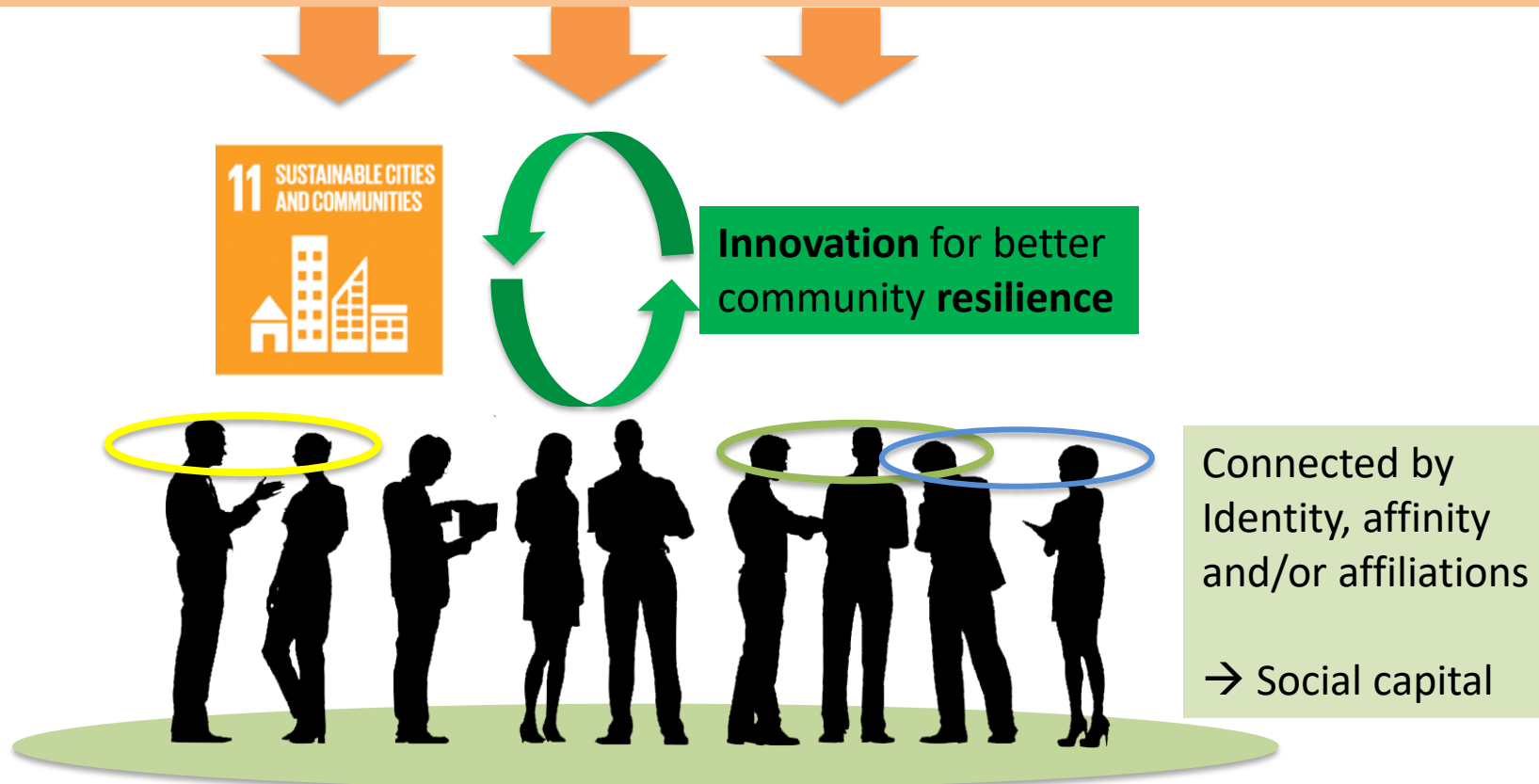
<https://publish.illinois.edu/bradly-alicea/tag/wicked-problems/>



Source: [CMU Transition Design](#), Irwin & Kossoff based on Rittle & Webber 1973

What is community innovation?

External driving forces: globalisation, digitalisation, individualisation, climate change...



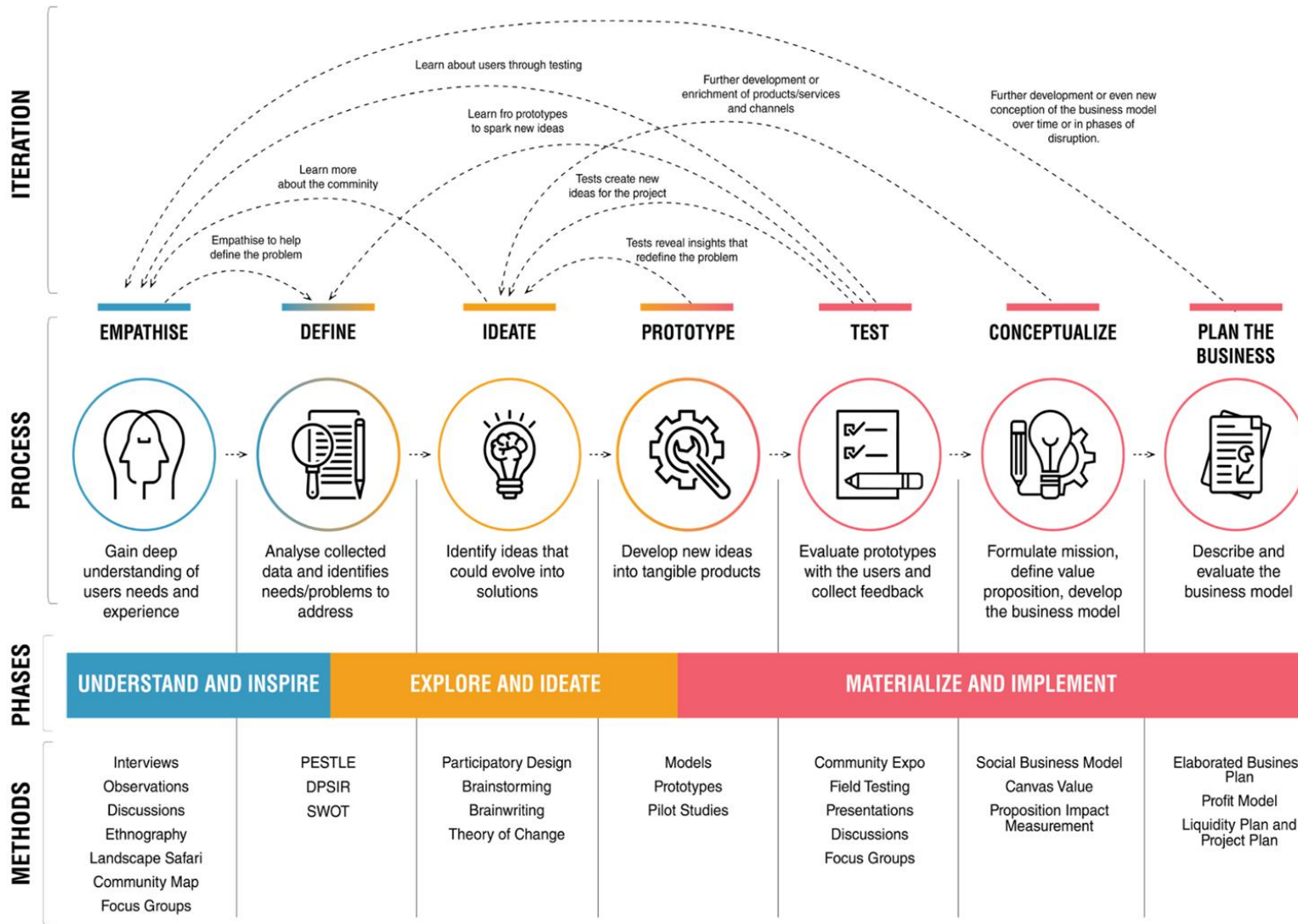
Communities can be defined by sharing a landscape: a village, a city, a neighborhood or a region

But where is the community?



Wimmelbild from Marian Meinhardt-Schönfeld

How does all of this come together?



Funck et al.,
2023, p. 36.

Interactive Poll #2

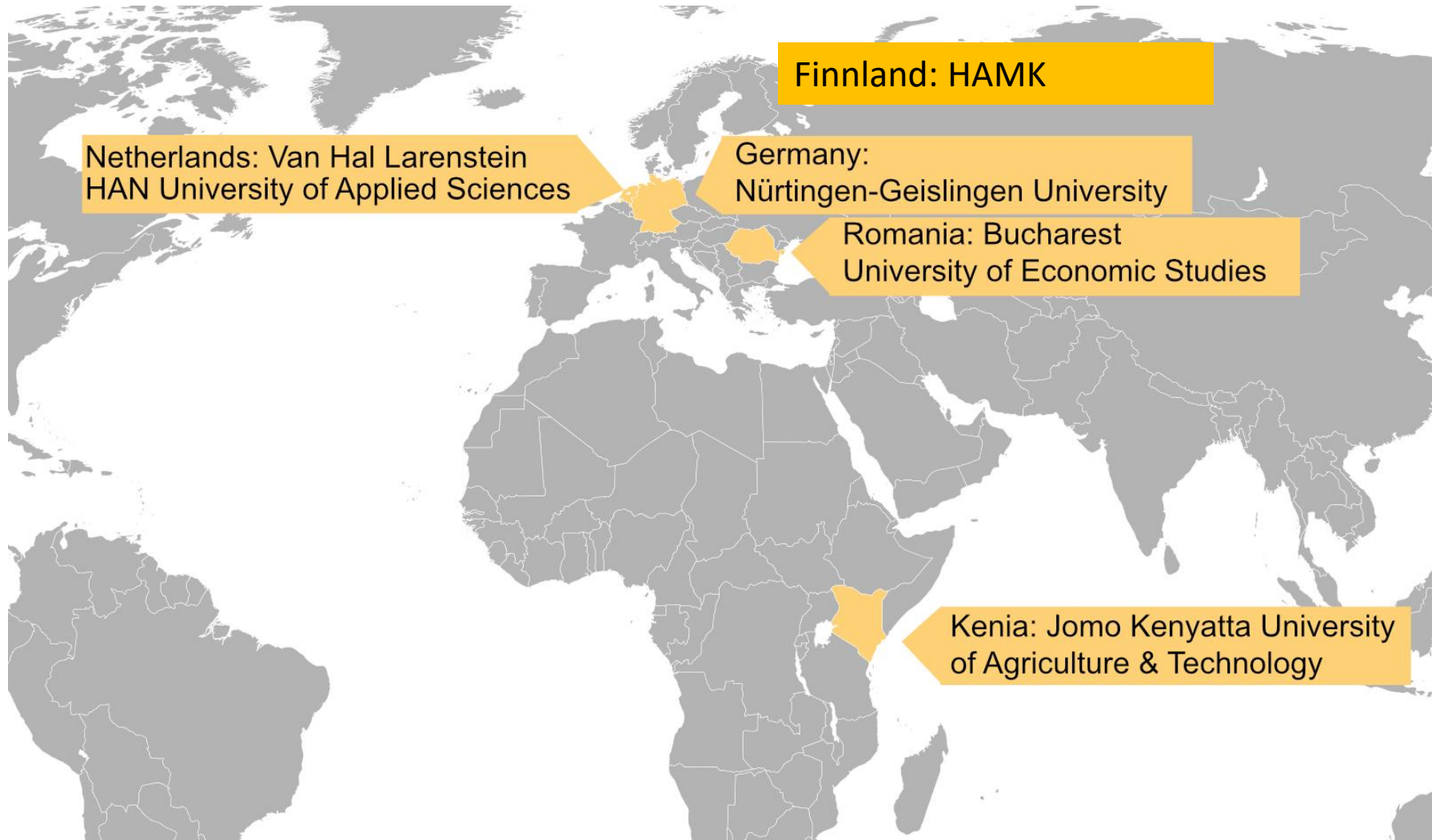
Please scan and go to our Menti:



Or open this link:

<https://www.menti.com/al89ekrs3js8>

Our Social Innovation Partner Network 2026



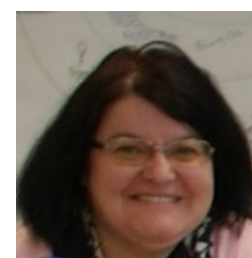
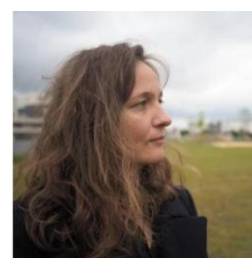
Our teaching and supervision team



Nürtingen Team: Ellen Fetzer, Dirk Funck, Karl M. Lange, Shashank Yadav, Fred Meier Menzel, Eunice Maina, Georgy Varghese



Arnhem Team: Pleun Kievits, Lies Huitema, Daan van der Linde



ASE Team: Monica Dudian, Simona Goia, Carmen Acatrinei, Roxana Triboi, Daniela Trasca, Daniela Sahlian

Team at Jomo Kenyatta University of Agriculture and Technology



Sylvia Mutua, Dennis Karanja,
Sunday Abuje,
Caleb Toroitich, Janet Ondieki,
Gathogo Githatu,
Brenda Kamande, Daniel
Ondu, Eunice Maina

Seminar Media

Seminar WIKI

<http://www.localchange.eu>

COMMUNITY LEARNING



The CLLC Project (2018-2021)

About the project
Project partners

Resources
Literature + Resources
Glossary
Case Studies

Online Seminar
Summer Term 2020

Seminar Summer 2020

Online Seminar Winter
Term 2019/20

Seminar Outline

Community Innovation
Labs

Our Labs

Intensive Study
Programmes

Lahemaa 2020-2021

Page Discussion

Seminar Social Entrepreneurship

An international online seminar offered by a European partnership

>>> now including **Community Innovation Labs**

>>> Online Course and workshops in Estonia, Romania and Jordan

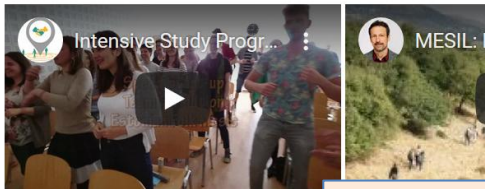
>>> **apply now**

>>> only for HfWU Students: [This seminar on NEO](#)

>>> **PPT Presentation Online Seminar and Intensive Programmes**

>>> Our next course starts on **17th of March 2020!**

Get a preview of our upcoming intensive workshops:



Watch a short video from our Social Entrepreneurship Intensive Study Programme in Lahemaa, EE, held in May 2018

- Videos
- Minutes

Direct links



Direct mailing
Coordinator
-> participants

Joint Google Drive
for the working groups

Team cooperation



ILIAS

<http://ilias.hfwu.de>

- Recordings
- Lecture slides
- References
- Upload area for reports

Learning Resources (1)

Introduction to Social Problem Thinking

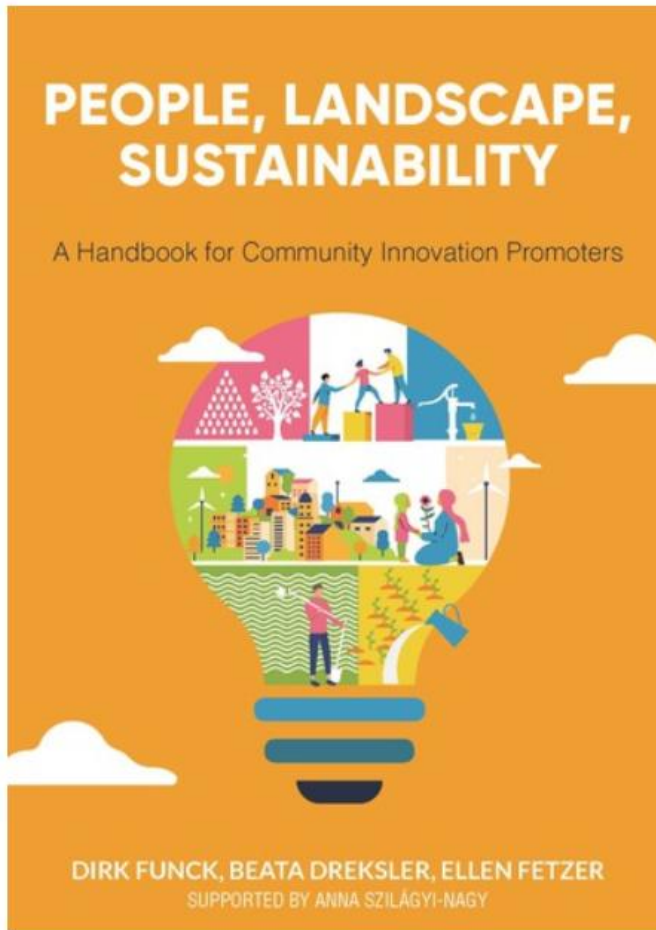
Video lecture by Felix Toepler, HfWU, Germany



https://www.youtube.com/watch?v=IVuY_b06CNw&feature=youtu.be

Learning Resources (2)

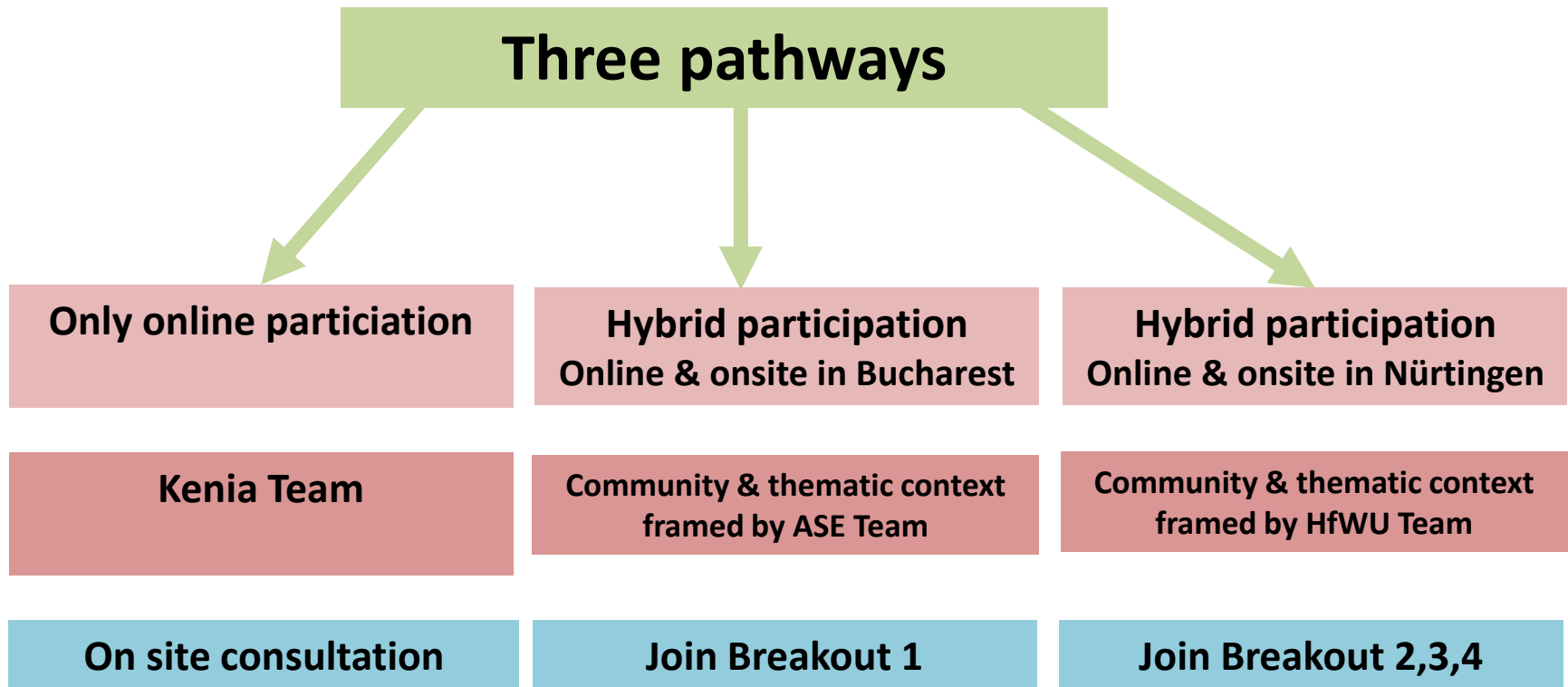
People, Landscape, Sustainability



A handbook accompanying community-based social innovation processes compiled by Dirk Funck, Ellen Fetzer and Beata Dreksler and available for free download from:

<https://cuvillier.de/en/shop/publications/8827-people-landscape-sustainability>

Thematic Contexts 2026



Nürtingen Community Innovation Lab



Local Intensive Programme from April 19 – 16, 2026

Three Focus Topics

Theme 1: Future Villa Melchior



with Dirk Funck & Karl Michael Lange

Theme 2: Intercultural Gardens



with Fred, Eunice and Georgy

Theme 3: Permaculture Vorstadt *Looking for Likely Alternatives*

***How to link permaculture, climate resilience,
water management and the neighbourhood?***



with Ellen and Shashank

Bucharest Community Innovation Lab



Local Intensive Programme from April 19 – 16, 2026

Four Focus Topics

Bucharest Themes

1. **Eu sunt ANA: Adriana Calcan:** Topic: Designing a Business Solution to Promote Social Entrepreneurship for Women
2. **Climatosfera:** We will work on the activities and approach of Climato Sfera (, a multidisciplinary NGO supporting the ecological transition) to improve its sustainability impact
3. **WIPRO Bucharest:** Work in teams to design a practical, AI enabled initiative that a company could realistically pilot to strengthen workplace culture and develop future ready talent.
4. **Ateliere Fara Frontiere:** The social business supports people with disabilities on the job market. We will work on strategies on how to further develop their services and partnerships.

with ASE team

Nairobi Theme

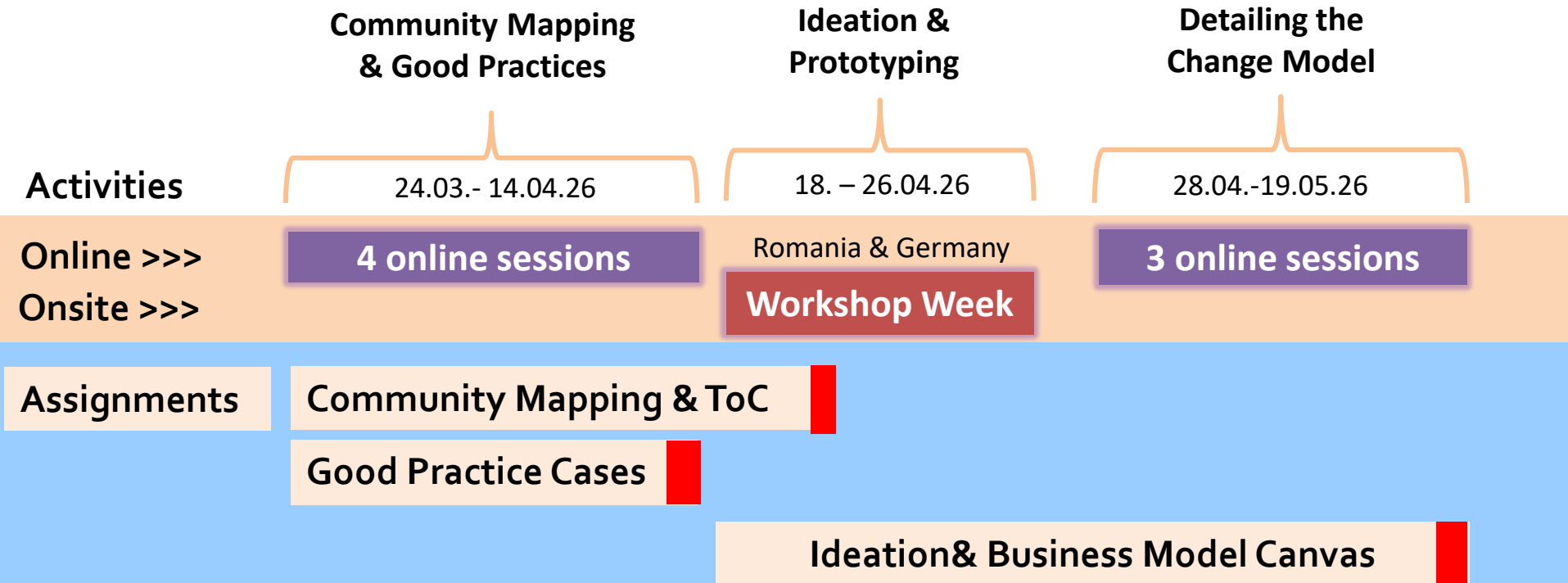
Waste as a Catalyst for Change



share Sylvia's slides here

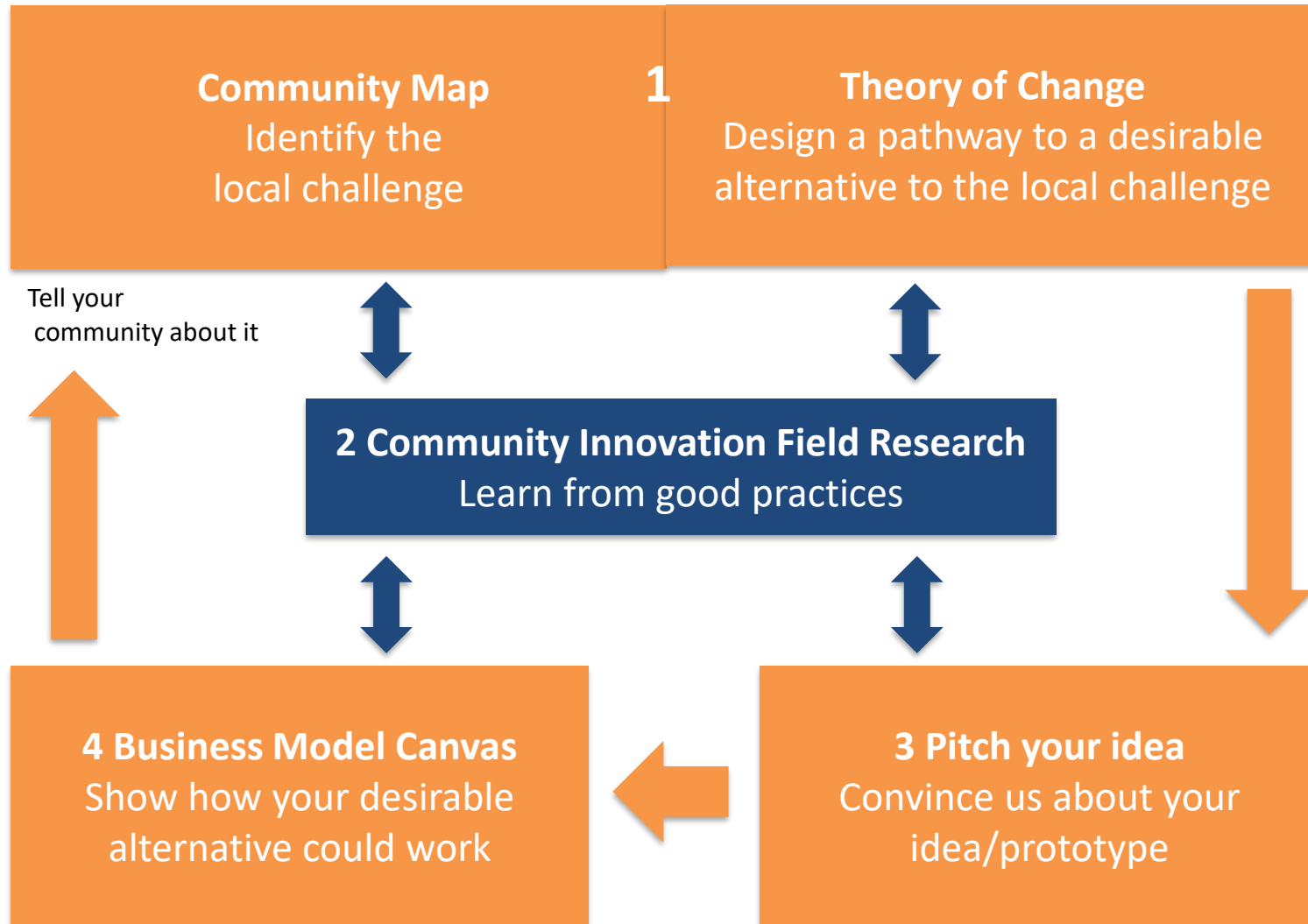
With JKUAT Team

Social Innovation Course Structure 2026



The **online plenary** meets on **Tuesdays** from **16 30 - 18 00 CET**
Tutored sessions are scheduled with the teams. **Red**: Team presentations

Four integrated assignments



>>> Detailed assignment descriptions are published on the wiki:

https://localchangewiki.hfwu.de/index.php?title=Assignments_Social_Innovation_and_Entrepreneurship_Spring_2026

Seminar Assignments

Assignments		Presented on	Submission	Working mode	Assessment
1	Community Map and Theory of Change	presentation during workshops and/or tutored session, submission	19.05.2026 (together with final presentation)	Team product	20%
2	Community Innovation Field Research	13.04.2026	19.05.2026	Team product	Pass/not pass
				Individual report	Grade 30%
3	Pitching your Innovation Idea	Part of workshop process and online exercises			
4	Business Model Canvas	Online in the plenary on 19.05.2026	19.05.2026	Team product	Grade 50%

>>> Detailed assignment descriptions are published on the wiki:

https://localchangewiki.hfwu.de/index.php?title=Assignments_Social_Innovation_and_Entrepreneurship_Spring_2026

Assignment 1: Community Map + Theory of Change

>>> We will explain this assignment in detail next Tuesday



https://www.comm-dev.org/financials/item/230-community-development-data-viz-january-2015
graphic recording by sombrada.com

All information on the assignment:

[https://localchangewiki.hfwu.de/index.php?title=Assignment_1:_Community_Map_and_Theory_of_Change_\(2026\)](https://localchangewiki.hfwu.de/index.php?title=Assignment_1:_Community_Map_and_Theory_of_Change_(2026))

Assignment 2: Field Research

After identifying your local community challenges you are invited to research what others are already doing in this field.

- What kinds of **innovation models exist** and how do they work?
- Which **individuals** are behind those initiatives and what motivates them?
- What could you **learn** from them?

- Try to find information on the social innovation
- Conduct an interview if you like
- Reflect and document your case



All information on the assignment:

[https://localchangelogwiki.hfwu.de/index.php?title=Assignment_2:_Community_Innovation_Field_Research_\(2026\)](https://localchangelogwiki.hfwu.de/index.php?title=Assignment_2:_Community_Innovation_Field_Research_(2026))

Assignment 2: Field Research

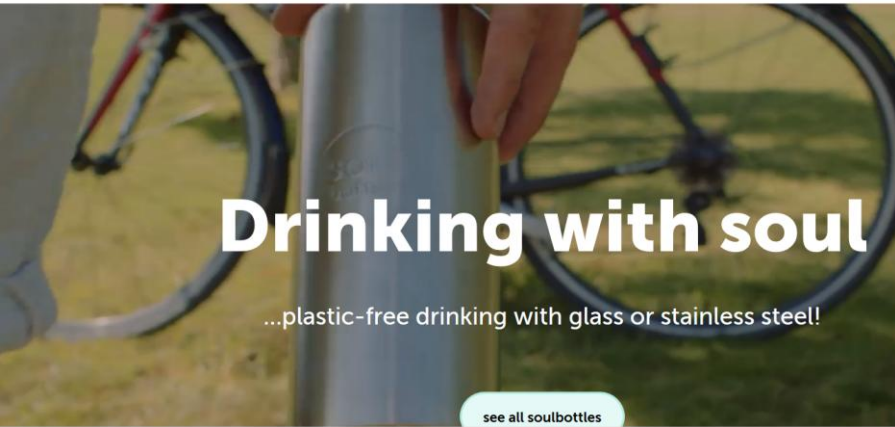
What do we understand by a social innovation project or approach?

For example:

- innovative forms of cooperation between public, private and social sectors,
- market-oriented approaches such as social businesses with explicit social and/or environmental aims
- alternative organization models (i.e. cooperatives, benefit corporations, foundations)

What all have in common are **innovative value propositions** that respond to **social or environmental needs**.





Drinking with soul

...plastic-free drinking with glass or stainless steel!

[see all soulbottles](#)

This website uses cookies to ensure you get the best experience on our website.



Cutia Țăranului

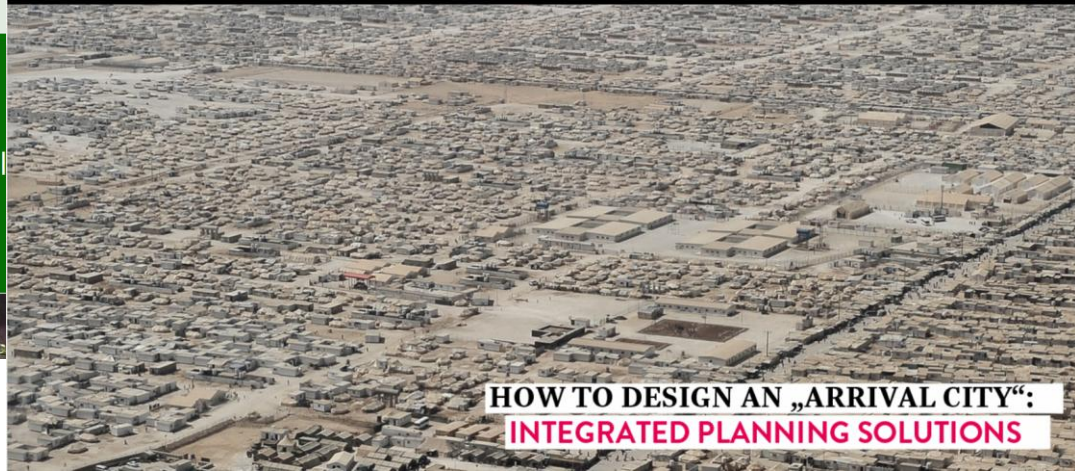
[Autentificare](#)

Cutia Țăranului

Taranii romani livreaza hrana proaspata, crescuta
direct la usa dvoastra



MORE THAN SHELTERS



HOW TO DESIGN AN „ARRIVAL CITY“:
INTEGRATED PLANNING SOLUTIONS

Assignment 2: Field Research

Individual work (one student per case):.

- Write a brief report (ca. 5 pages) in which you summarize the information of your local case. You may concentrate on specific aspects of the case study. Attach supplementary information (e.g. graphical material) if available.
- You need to submit the completed case study template and the brief written report by **May 19, 2026**.

Group work:

- You are further asked to reflect on similarities and differences between the social innovation approaches in your team and how far local conditions of the respective countries might be affecting them.
- Focus on one cross-cutting question in order to compare the approaches
- Present your findings online in your team on **April 13, 2026**.

Assignment 2: Field Research

How to find social innovation activities?

- Research the regional and national media (newspaper, magazines etc.) for articles/reports.
- Research the internet for SEs in your region/country using keywords such as “social innovation”, “social business”, “social impact”, etc. + the name of the region/country.
- Research online directories and databases of SEs in your region, e.g.
- [Ashoka network](#)
- [betterplace.org](#)
- [European Commission – European social enterprises](#)
- [Kiva](#)
- [Schwab Foundation](#)
- [Skoll Foundation](#)
- [Social Enterprising Europe](#)
- **Talk to people** (family, friends, colleagues, etc.) whether they know SEs in your region.

Assignment 2: Case Study Template (1)

CLLC Assignment 3: This case study template is submitted **together** with the 5 pages case study report, explanations on page 3

Name of Social Innovation or Social Enterprise:

Date: Student Name: Home university/Country:



General Information	Founders	Key Challenges
Founding Year	Founders' Demographics	Past Challenges
No. of Founders		
No. of Employees	Founders' Education & Experiences	Current Challenges
No. of Volunteers		
Legal Form	Founders' Motives	Further Information and Remarks
References / Online Resources		

Assignment 2: Case Study Template (2)

CLLC Assignment 3: This case study template is submitted **together** with the 5 pages case study report, explanations on page 3

Name of Social Innovation or Social Enterprise:

Date: Student Name: Home university/Country:

<i>Social Enterprise or charity / community-based organisation</i>				
<i>Mission Statement</i>				
<i>Key Partners</i>	<i>Key Processes</i>	<i>Value Proposition</i>	<i>Key products and services</i>	<i>Beneficiaries</i>
	<i>Key Resources</i>		<i>Channels</i>	
<i>Cost structure / cost drivers</i>			<i>Revenues</i>	
<i>Customer & Beneficiary Input</i>			<i>Key performance indicators</i>	
<i>Social and/or Environmental Impact</i>				

Assignment 2: Field research

Any questions?



All information on the assignment:

[https://localchangelogwiki.hfwu.de/index.php?title=Assignment_2: Community Innovation Field Research \(2026\)](https://localchangelogwiki.hfwu.de/index.php?title=Assignment_2:_Community_Innovation_Field_Research_(2026))

Upcoming plenary sessions

What is a Community?

Tuesday, March 31, 16 30 – 17 15 CET

with Daan van der Linde (VHL)

17 15 – 18 00 CET

CIL Breakout Session

Start community & context analysis



Thank you very much for your attention!

