

DEMOCRATIC LANDSCAPE TRANSFORMATION

Athens

Pre & Post-Seminar Participant Survey Analysis

Introduction & Methodology

Part 1: Pre-Seminar Expectations

Part 2: Post-Seminar Experiences

Part 3: Comparative Analysis

Key Takeaways & Recommendations

Seminar Overview



The Athens workshop 2025 served as a microcosm of OLA's vision, bringing together a diverse group of learners and practitioners to explore, co-create, and critically reflect on landscape democracy in an urban context.

Purpose of the Survey

Featuring 38 participants from diverse international and interdisciplinary backgrounds, the surveys were designed to capture participants' perspectives before and after the workshop to measure:

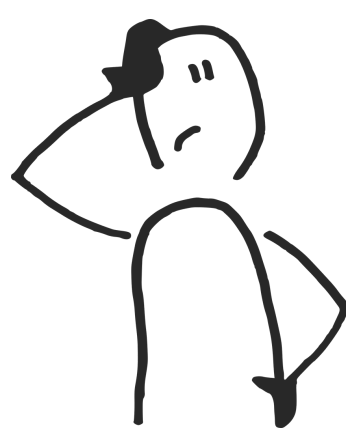
- The alignment of the workshop's outcomes with OLA's core values of openness, inclusiveness, participation, empathy, sustainability, and resilience.
- The effectiveness of the Living Lab format in fostering a "mutually transformative process" of designing with rather than for a community.
- The participants' sense of empowerment and their ability to engage with the "wicked problems" of landscape transformation.

Respondents: 38 participants.

Analysis: Responses were grouped into themes.
Frequency of mentions for each theme was calculated
as a percentage of total responses per question.

Goal: To understand participant expectations and measure
how well they were met.

Pre-Seminar Survey



PRE-SEMINAR SURVEY QUESTIONS

1. What does democratic landscape transformation mean?

3. What do you expect to learn in this workshop?

2. What makes an urban landscape democratic?

4. What do you think you can bring into this workshop?



**Qn. 1 : What does
democratic landscape
transformation mean?**

Response	Mentions	Percentage
Including people in planning	9	23.70%
Community involvement	8	21.10%
To plan/ design/ develop landscape	7	18.40%
Including all living beings	6	15.80%
Adaptable to meet people & planet needs	6	15.80%
Driven by human action according to needs	4	10.50%
Shaping landscape, communities & people	3	7.90%
People interaction with design choosing how they want to live	3	7.90%
Meaningful representative space for all	3	7.90%
Educating people on how to take care of landscape	2	5.30%
Stakeholder involvement for an effective design	2	5.30%

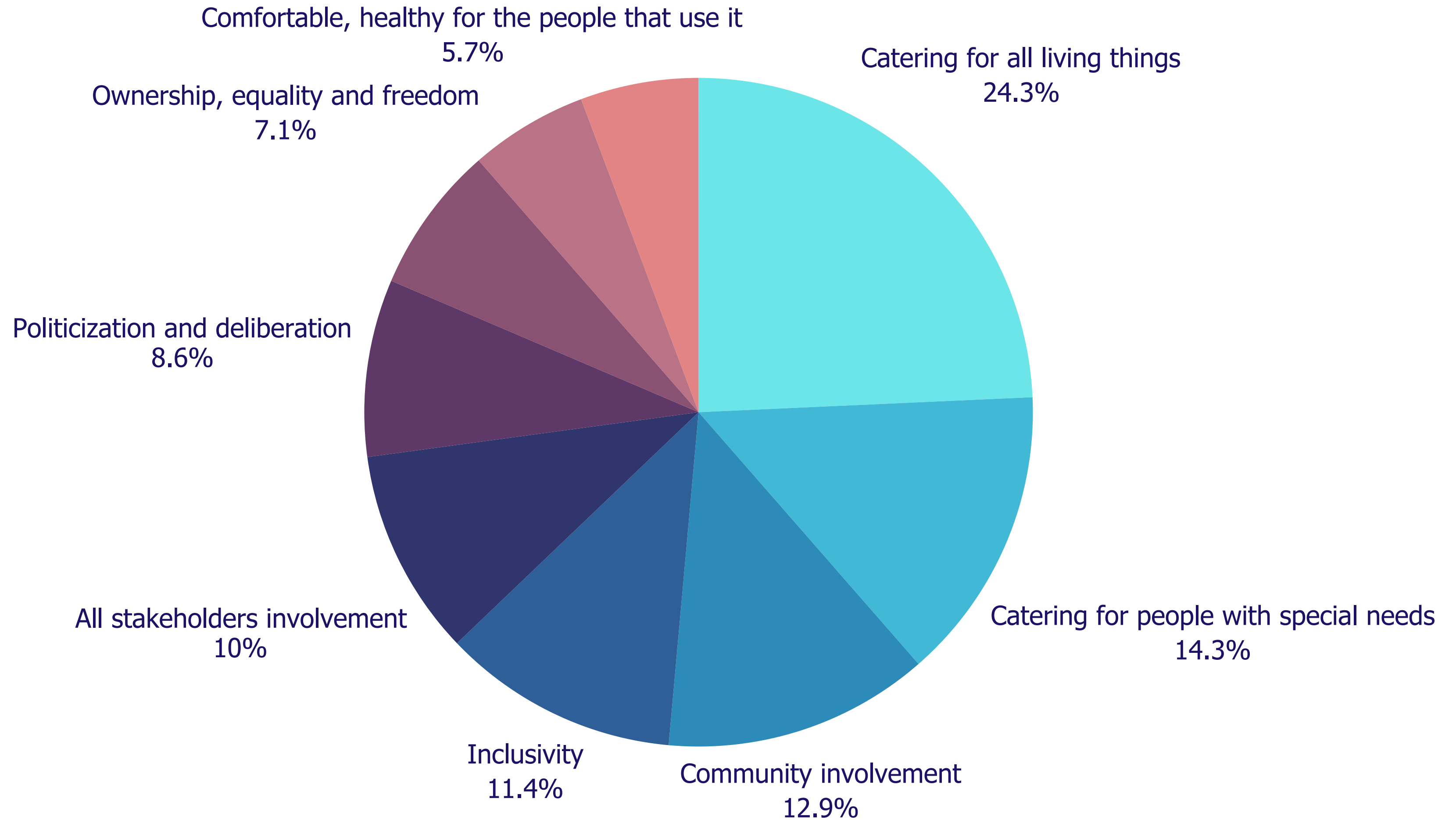
Response





Qn. 2 : What Makes a Landscape Democratic?

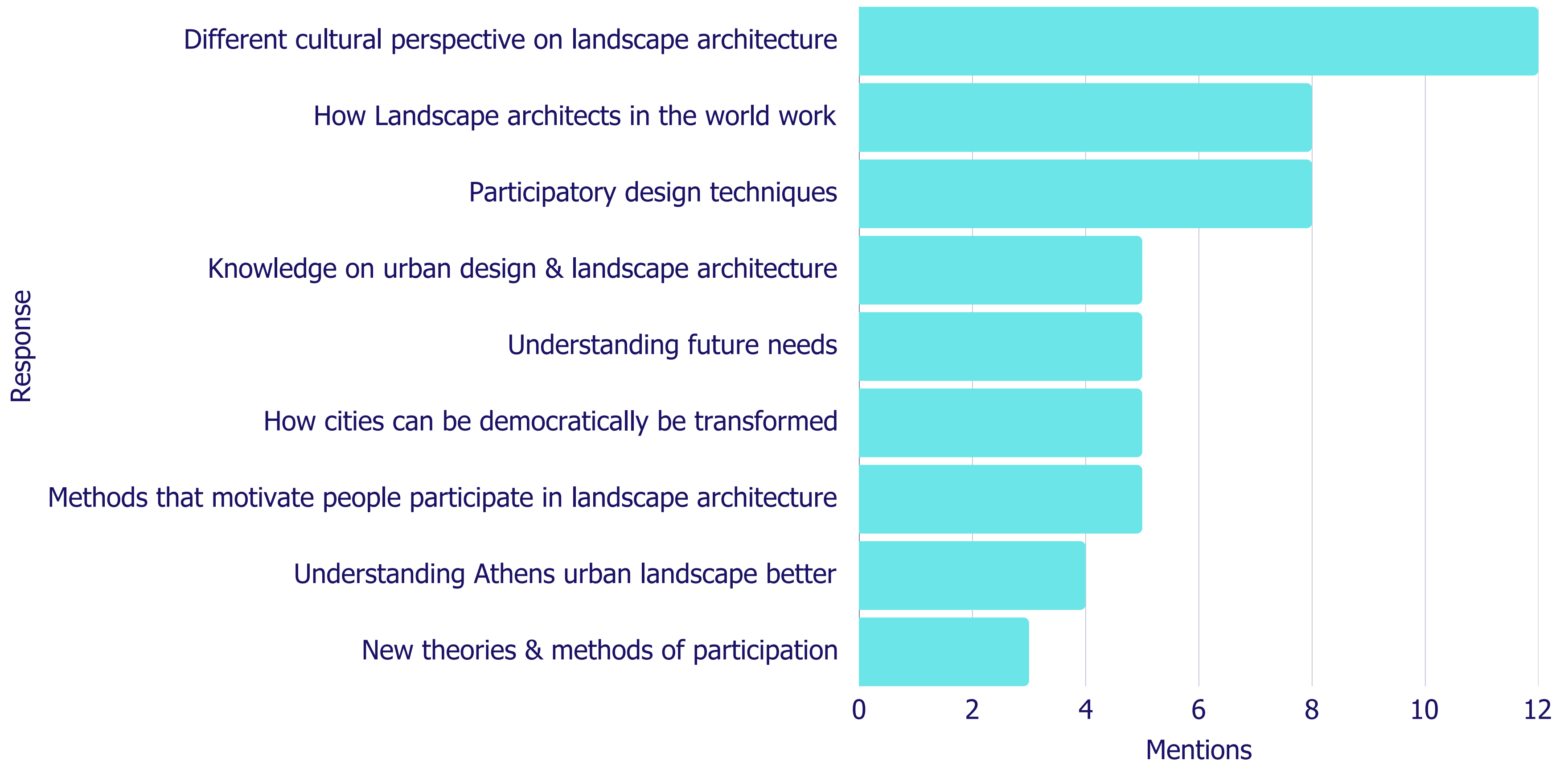
Response	Mentions	Percentage
Catering for all living things	17	44.70%
Catering for people with special needs	10	26.30%
Community involvement	9	23.70%
Inclusivity	8	21.10%
All stakeholders involvement	7	18.40%
Politicization and deliberation	6	15.80%
Ownership, equality and freedom	5	13.20%
Comfortable, healthy for the people that use it	4	10.50%
Adaptive	4	10.50%





**Qn. 3 : What do you
expect to learn in this
workshop?**

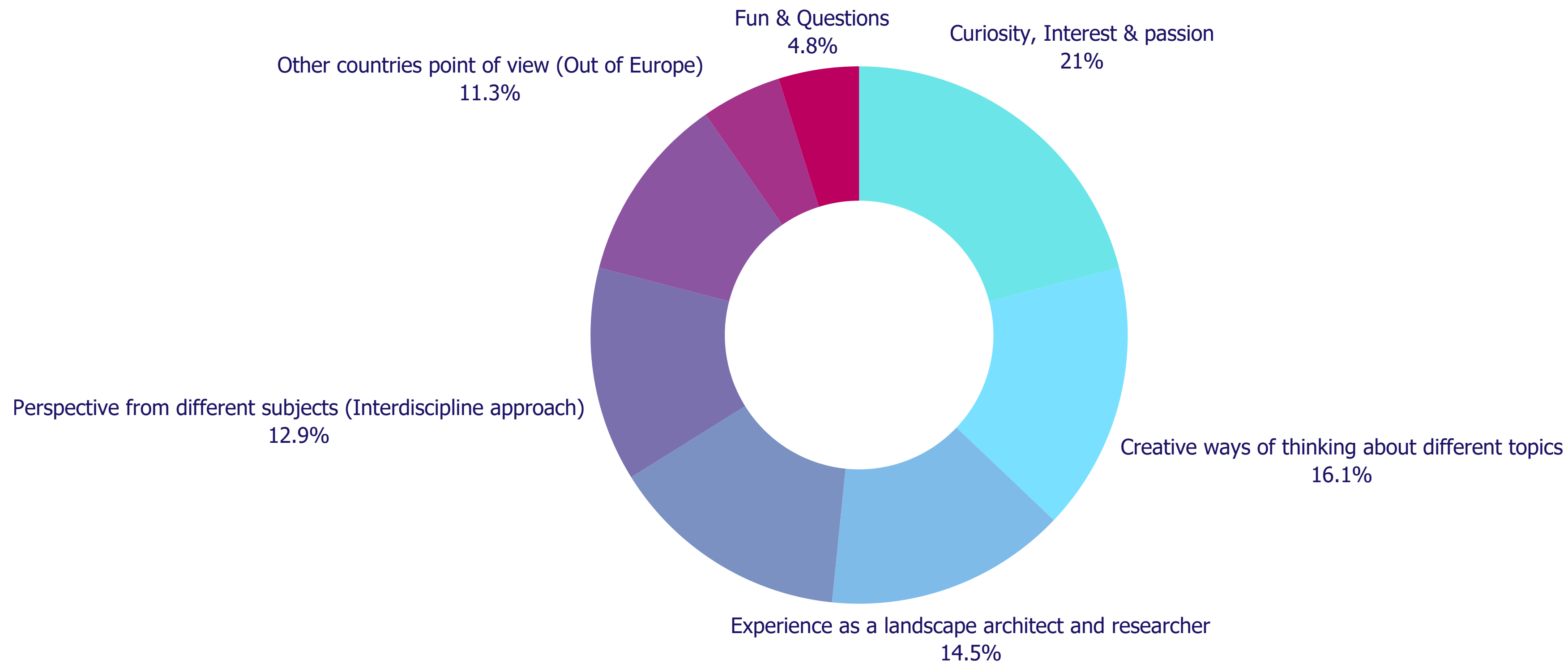
Response	Mentions	Percentage
Different cultural perspective on landscape architecture	12	31.60%
How Landscape architects in the world work	8	21.10%
Participatory design techniques	8	21.10%
Knowledge on urban design & landscape architecture	5	13.20%
Understanding future needs	5	13.20%
How cities can be democratically be transformed	5	13.20%
Methods that motivate people participate in landscape architecture	5	13.20%
Understanding Athens urban landscape better	4	10.50%
New theories & methods of participation	3	7.90%





**Qn. 4 : What do you
think you can bring into
this workshop?**

Response	Mentions	Percentage
Curiosity, Interest & passion	13	34.20%
Creative ways of thinking about different topics	10	26.30%
Experience as a landscape architect and researcher	9	23.70%
Ideas on how to include people in such projects	9	23.70%
Perspective from different subjects (Interdiscipline approach)	8	21.10%
Other countries point of view (Out of Europe)	7	18.40%
Cultural knowledge	3	7.90%
Fun & Questions	3	7.90%



Question	Top Response	Mentions	Percentage
What does democratic landscape transformation mean?	Including people in planning	9	23.70%
What makes an urban landscape democratic?	Catering for all living things	17	44.70%
What do you expect to learn in this workshop?	Different cultural perspective on landscape architecture	12	31.60%
What do you think you can bring into this workshop?	Curiosity, Interest & passion	13	34.20%

Post-Seminar Outcomes

Post-Seminar Overview

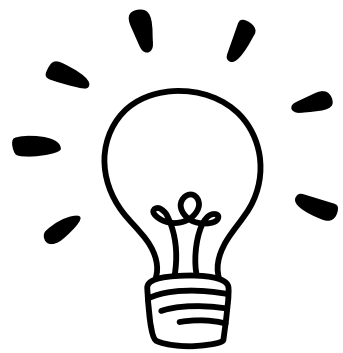
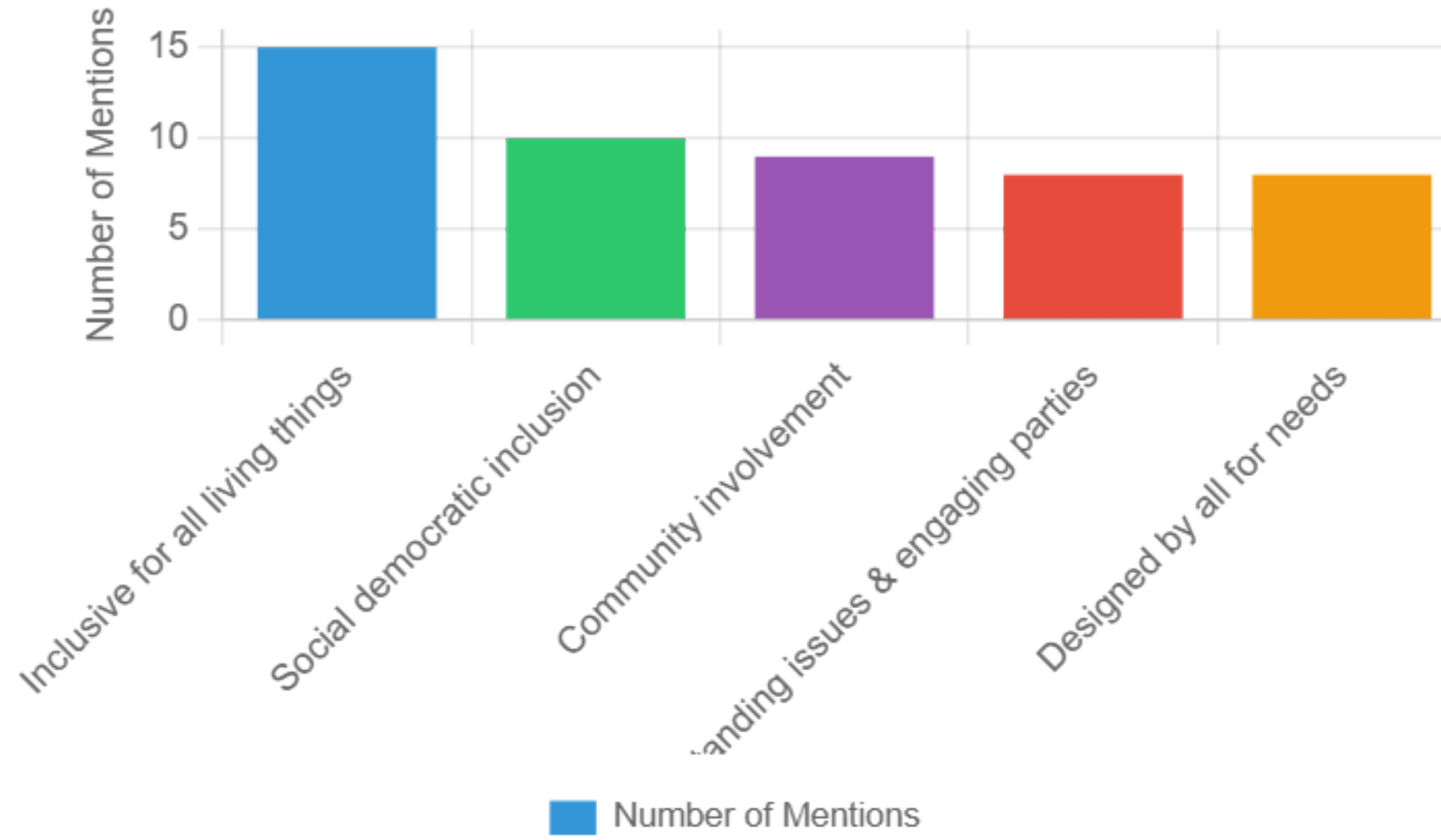
- Survey conducted after the workshop concluded.
- Measured shifts in understanding, key learnings, and feedback.



**Qn. 1 : What does
democratic landscape
transformation mean?**

Top Responses

- Inclusive for all living things (15 mentions | 39.5%) (A significant increase in focus from the pre-seminar survey)
- Social democratic inclusion (10 mentions | 26.3%) (A new, politically-focused concept)
- Community involvement (9 mentions | 23.7%)
- Understanding issues & engaging parties (8 mentions | 21.1%)
- Designed by all to cater for their needs (8 mentions | 21.1%)

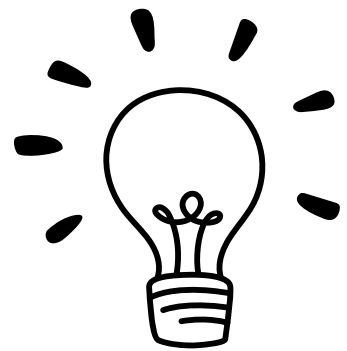
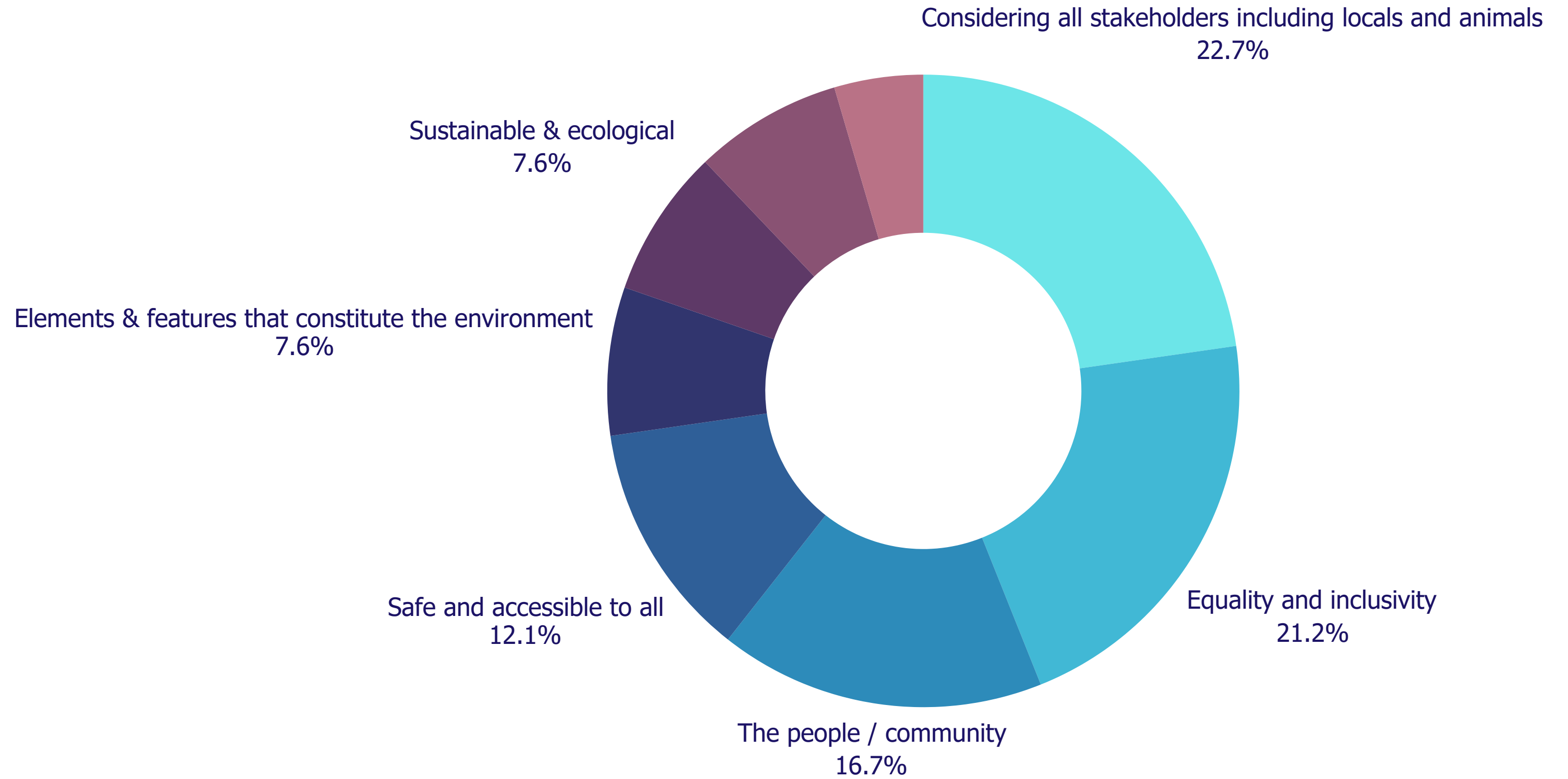


The definition deepened to include stronger political ("social democratic") and nuanced ecological ("change in ecology") dimensions.



**Qn. 2 : What makes an
urban landscape
democratic and for
whom?**

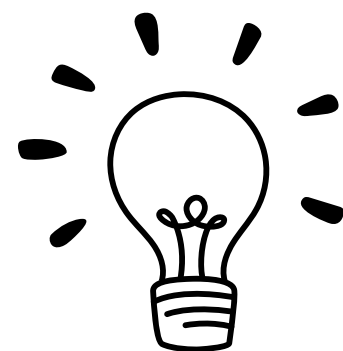
Response	Mentions	Percentage
Considering all stakeholders including locals and animals	15	39.50%
Equality and inclusivity	14	36.80%
The people / community	11	28.90%
Safe and accessible to all	8	21.10%
Elements & features that constitute the environment	5	13.20%
Sustainable & ecological	5	13.20%
Needs & concerns of the people addressed	5	13.20%
If the city profit from it	3	7.90%



The responses showed a reinforcement of pre-seminar values with even greater clarity on justice and multi-species stakeholders.



**Qn. 3 : What have you
learned in this
workshop?**



The workshop successfully delivered on promises of practical skills, cultural exchange, and participatory methods.



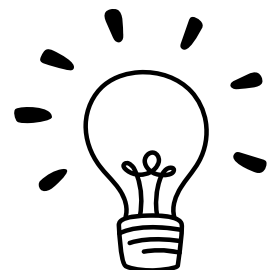
**Qn. 4 & 5 : What were
your highlights and
lowlights?**

Highlights:

- Group work (working together) 16 mentions (42.1%)
- Connecting with others from around the world 13 mentions (34.2%)
- Site visit & walking around the city 11 mentions (28.9%)
- Prototyping session 9 mentions (23.7%)
- Team work & stakeholder engagements 9 mentions (23.7%)
- Shared moments with local people 6 mentions (15.8%)

Lowlights:

- Overwhelming intensive hours 12 mentions (31.6%)
- Time management & schedules 11 mentions (28.9%)
- Group clarity (Overwhelming & confusion) 5 mentions (13.2%)
- Transportation systems 4 mentions (10.5%)
- Lack of sociality in Athens 2 mentions (5.3%)



The collaborative and hands-on aspects were hugely successful. The intensive schedule was the primary drawback.

Question	Top Response	Mentions	Percentage
What does democratic landscape transformation mean?	Inclusive for all living things	15	39.50%
What makes an urban landscape democratic and for whom?	Considering all stakeholders including locals and animals	15	39.50%
What have you learned in this workshop?	Stakeholder engagement (Team work & management)	13	34.20%
What were your highlights?	Group work (working together)	16	42.10%
What were your lowlights?	Overwhelming intensive hours	12	31.60%

Comparison & Conclusion

OLA Value	Pre-Seminar Evidence	Post-Seminar Evidence	Analysis
Inclusiveness	"Including people" (23.7%), "Catering for all living things" (44.7%)	"Inclusive for all living things" (39.5%), "Considering all stakeholders including locals and animals" (39.5%), "Equality and inclusivity" (36.8%)	The concept of inclusion became more sophisticated, explicitly naming "animals" and "stakeholders," moving beyond just "people." This directly reflects the Charta's definition of Landscape Democracy as extending rights to "non-human beings."
Participation	"Community involvement" (21.1%), "Including people in planning" (23.7%)	"Community involvement" (23.7%), "Designed by all to cater for their needs" (21.1%)	While the frequency remained similar, the context changed. Post-seminar, participation is framed as a means to an end ("cater for their needs"), showing a deeper understanding of its purpose as a co-creative process, not just a consultation checkbox.
Sustainability/ Resilience	"Sustainable" (5.3%), "Adaptable" (15.8%)	"Sustainable" (18.4%), "Change in ecological characteristics" (15.8%), "Sustainable & ecological" (13.2%)	Mentions of sustainability more than tripled. Furthermore, it was specifically linked to ecological change and resilience, moving from a buzzword to a defined outcome of the transformation process.
Empathy & Justice	"Ownership, equality and freedom" (13.2%)	"Social democratic inclusion" (26.3%), "Needs & concerns of the people addressed" (13.2%)	The post-seminar language incorporates more explicit social justice and political framing ("social democratic," "needs addressed"), aligning with OLA's value of "justice, equity, and respect for all members of an ecosystem."

Key Takeaways & Success Metrics

- Deepened Understanding: Concepts of inclusivity and democracy became more nuanced and central.
- Met Learning Objectives: Successfully provided cultural perspectives and participatory methods.
- Fostered Collaboration: Group work and international connection were the top highlights.
- Validated Format: Site visits and prototyping were highly effective activities.

Recommendations for Future Workshops

- Pacing & Logistics: Address the overwhelming schedule (#1 lowlight). Consider longer duration or lighter daily hours.
- Clarity: Improve initial briefings to reduce "confusion the first day" and enhance "group clarity."
- Double Down on Success: More prototyping, site visits, and structured networking. The social and hands-on elements were most valued.

The results of the pre- and post-seminar surveys demonstrate that the Athens Living Lab successfully embodied core tenets of the OLA Charta.

The significant post-workshop increase in participants defining landscape transformation through lenses of "inclusivity for all living things" and "social democratic inclusion" shows a marked deepening of understanding towards OLA's vision of a more just and sustainable world.

The data confirms that the workshop excelled in its primary goal: fostering a collaborative, cross-cultural environment where participants could learn and practice methods of democratic engagement.

The highlights—group work, connecting with others worldwide, and prototyping—directly reflect OLA's values of collective creativity and co-creation.

The Athens workshop has proven to be a powerful step in building a network of practitioners equipped to tackle wicked problems through democratic means.

We thank all participants for their passionate contributions and invite them to continue this journey with us in future seminars and Living Labs.

For more information about how to get involved, visit openlandscapeacademy.org or contact info@openlandscapeacademy.org.

Thank You!

