



Scenario & forecasting

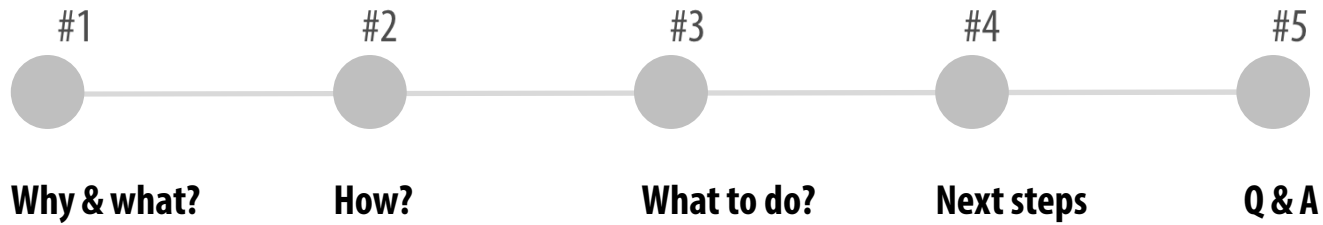
28.11.2022

16 00 - 17 30 CET



Scenario & forecasting

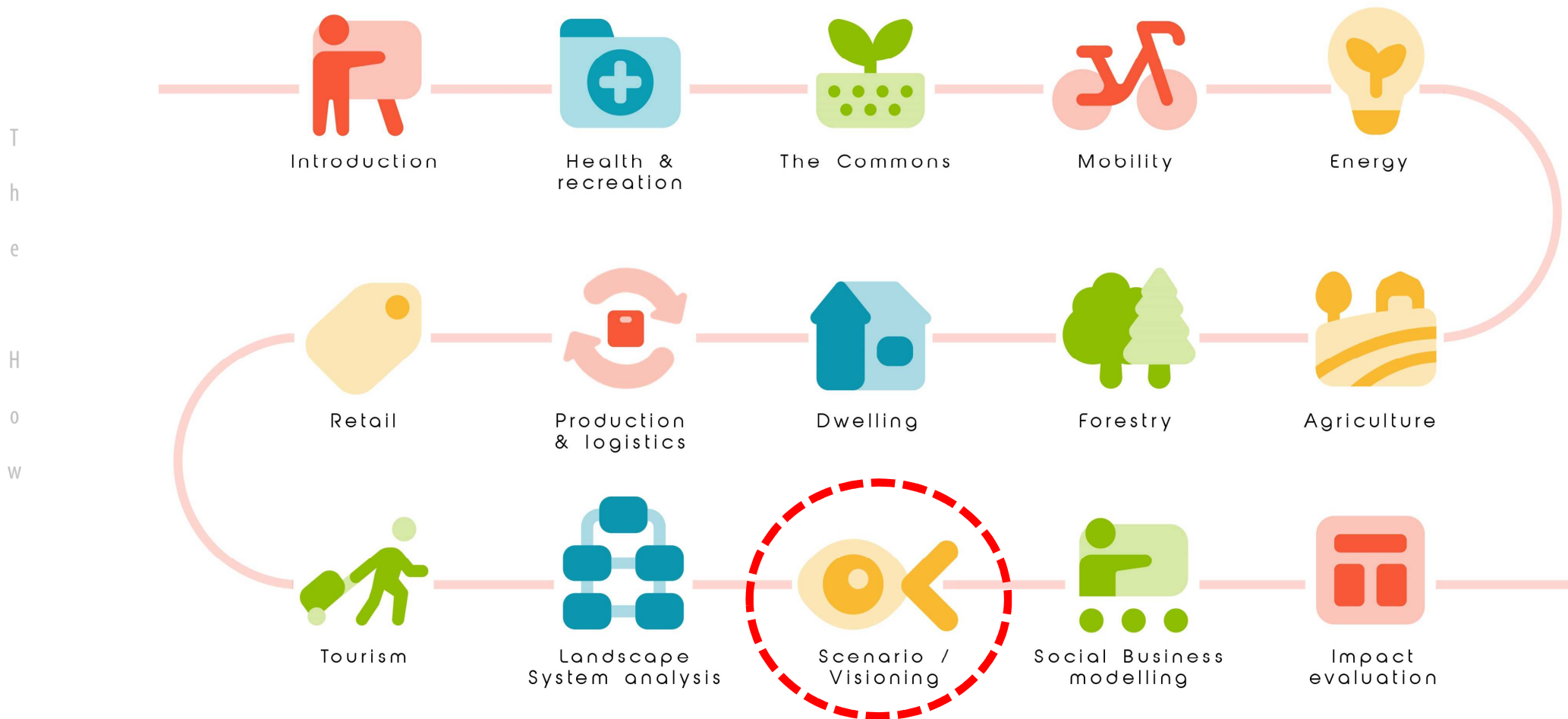
I
N
D
E
X



Thinking landscape through economy

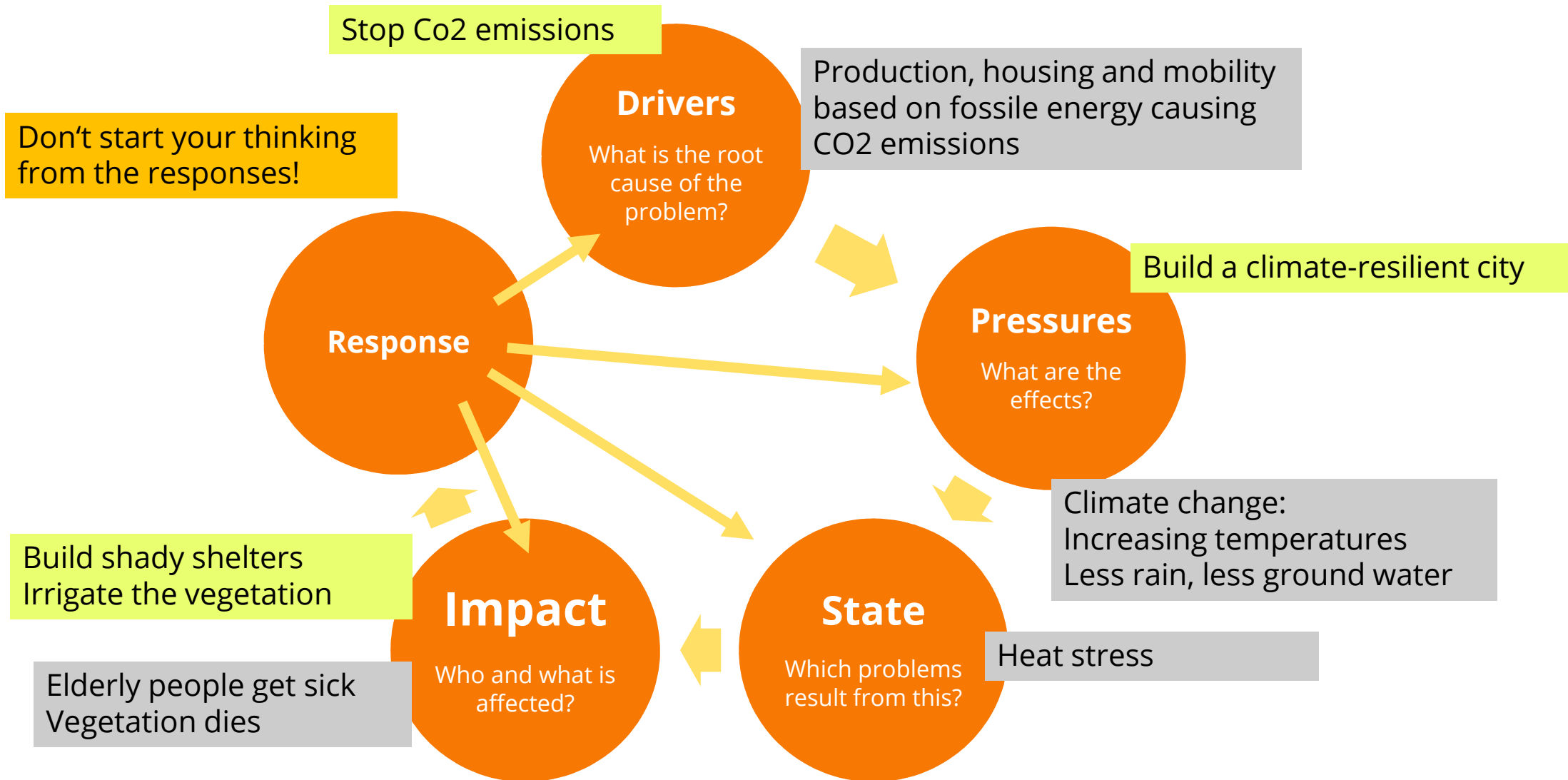
Thinking economy through landscape

Our TELOS pathway so far



System Context: DPSIR Analysis

4



Why using DPSIR?

DPSIR (Drivers, Pressures, States, Impacts, responses) is a framework in which you can look at and analyse the important and **interlinked relationship** between social and environmental factors.

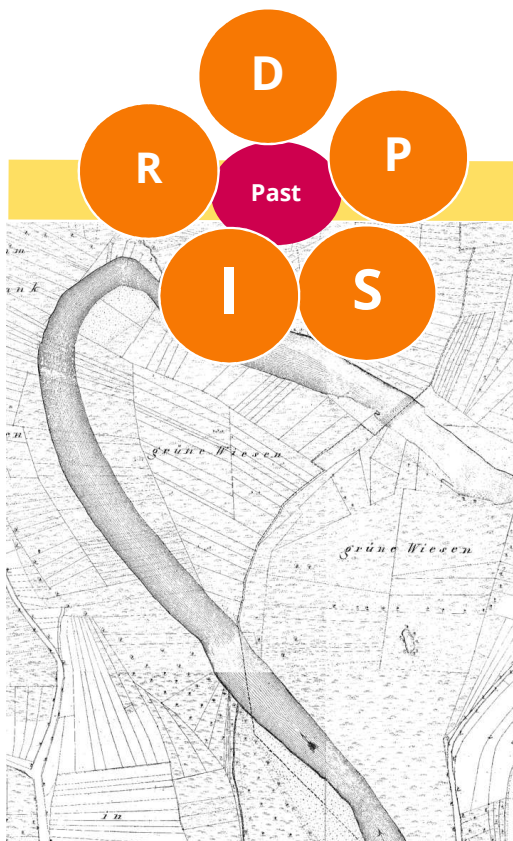
It is a well received popular framework internationally.

The DPSIR model is a good analytical framework for assessing complex natural resource issues.

<https://learningforsustainability.net/mwa/dpsir/>

DPSIR can help you understand past, present and possible future transformation

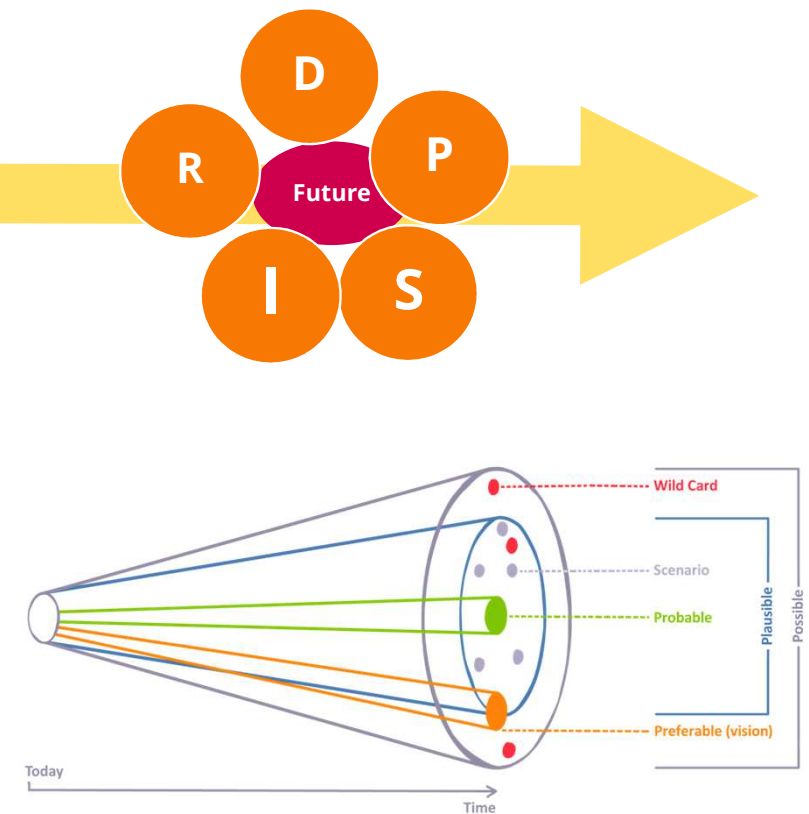
How was it and why?



How is it and why?



How will it be and why?



Let's brainstorm!

Divers, Pressures, State, Impacts for our area of study


<https://padlet.com/ellenfetzer/r0wgt2z1qf35vukb>

Padlet

E. Fetzer • 1m

Brainstorming the System Context of the Neckar Valley Landscape

Please share your thoughts on drivers, pressures, states, impacts and possible responses



Driving Forces (external)

Which trend might the driving force be following?

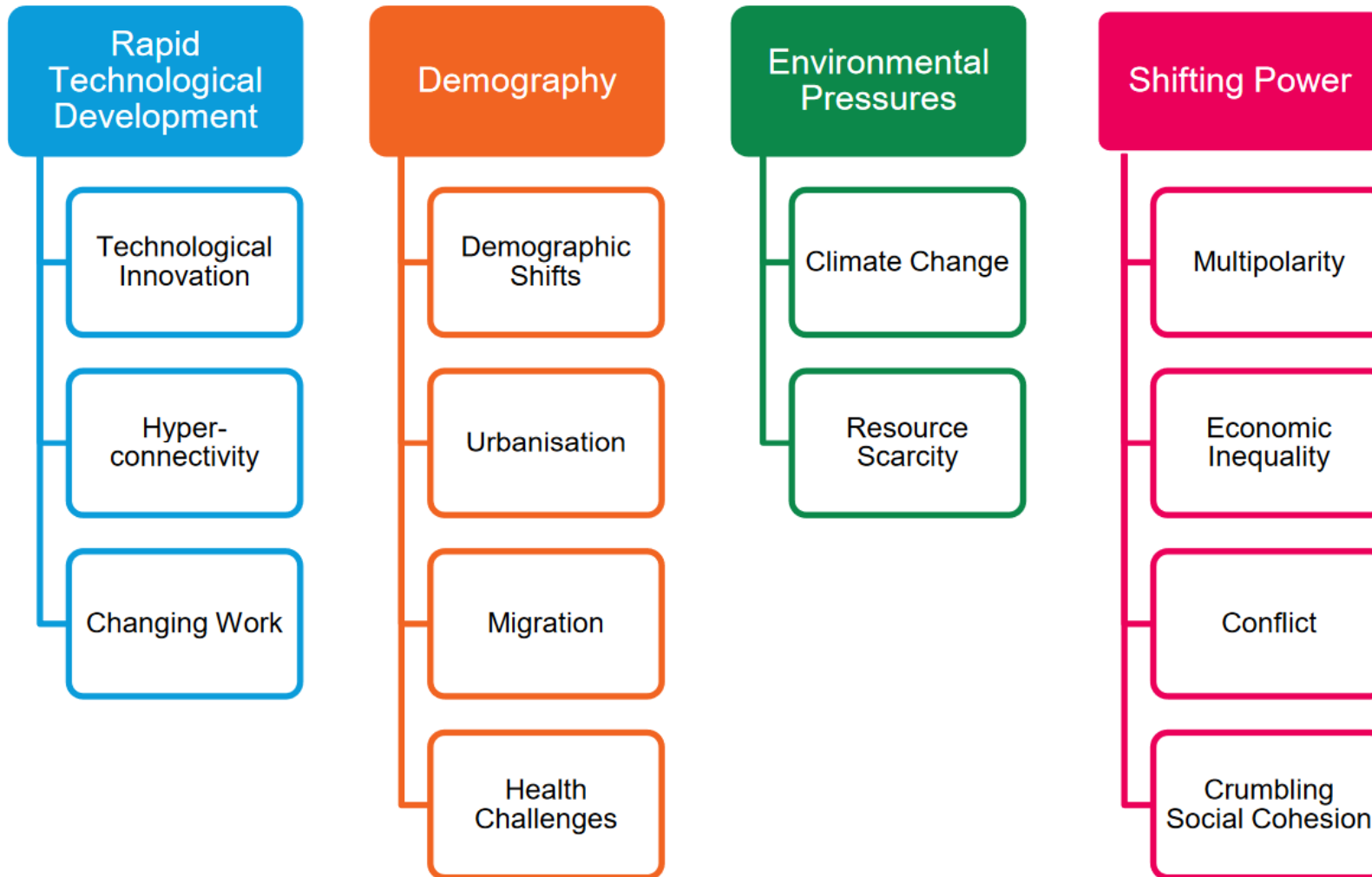
Which pressures emerge from that?

Which state in the local landscape does this create?

Who and what is impacted by this?

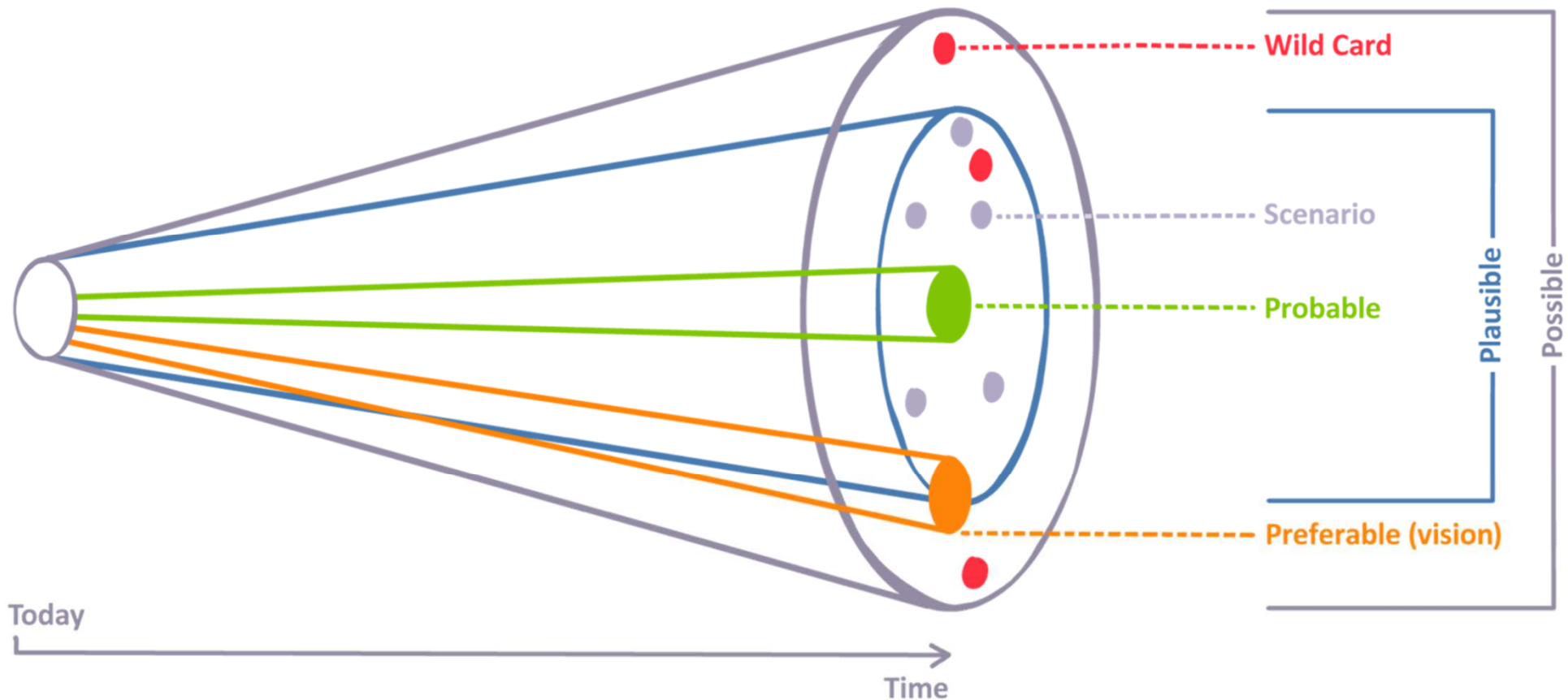
What could be a possible response?

Keeping the global megatrends in mind: The four clusters




Oxfam Discussion Papers: Global Megatrends. Mapping the forces that affect us all.

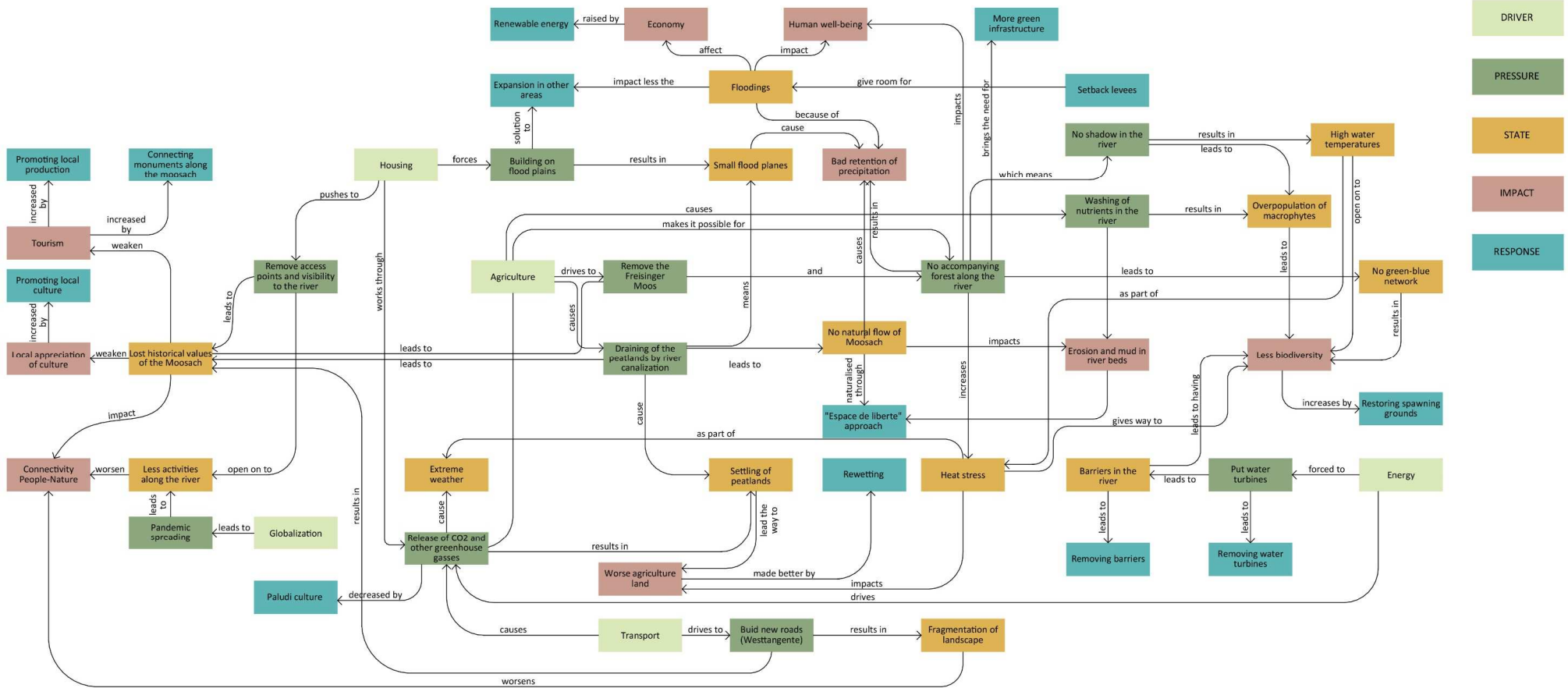
**You have to anticipate:
What if...? How will it be? Who wins? Who loses?**



How to forecast? Try to get an understanding of the landscape system

Driving Forces	Trends	Pressures	State	Impact
Political	liberal trend	land as opportunity	Fragmentation sealing	Less space
Economic	growth	land take	Fragmentation sealing	for ecosystem services
Social	individualisation	No advocacy for the common good	Communities are not resilient	Open spaces are not used
Technological	digitalisation	Professions and Services disappear	Jobs + identities change	People need orientation
Legal	New Green Deal	Support climate resilience	New opportunities	Action for resilience
Environmental	climate change	Changing water Cycle and system	Water scarcity + flashfloods	People + goods at risk
PESTLE	 Spectrum of Responses			

Don't think linear. Build a multi-nodal concept map of your system.

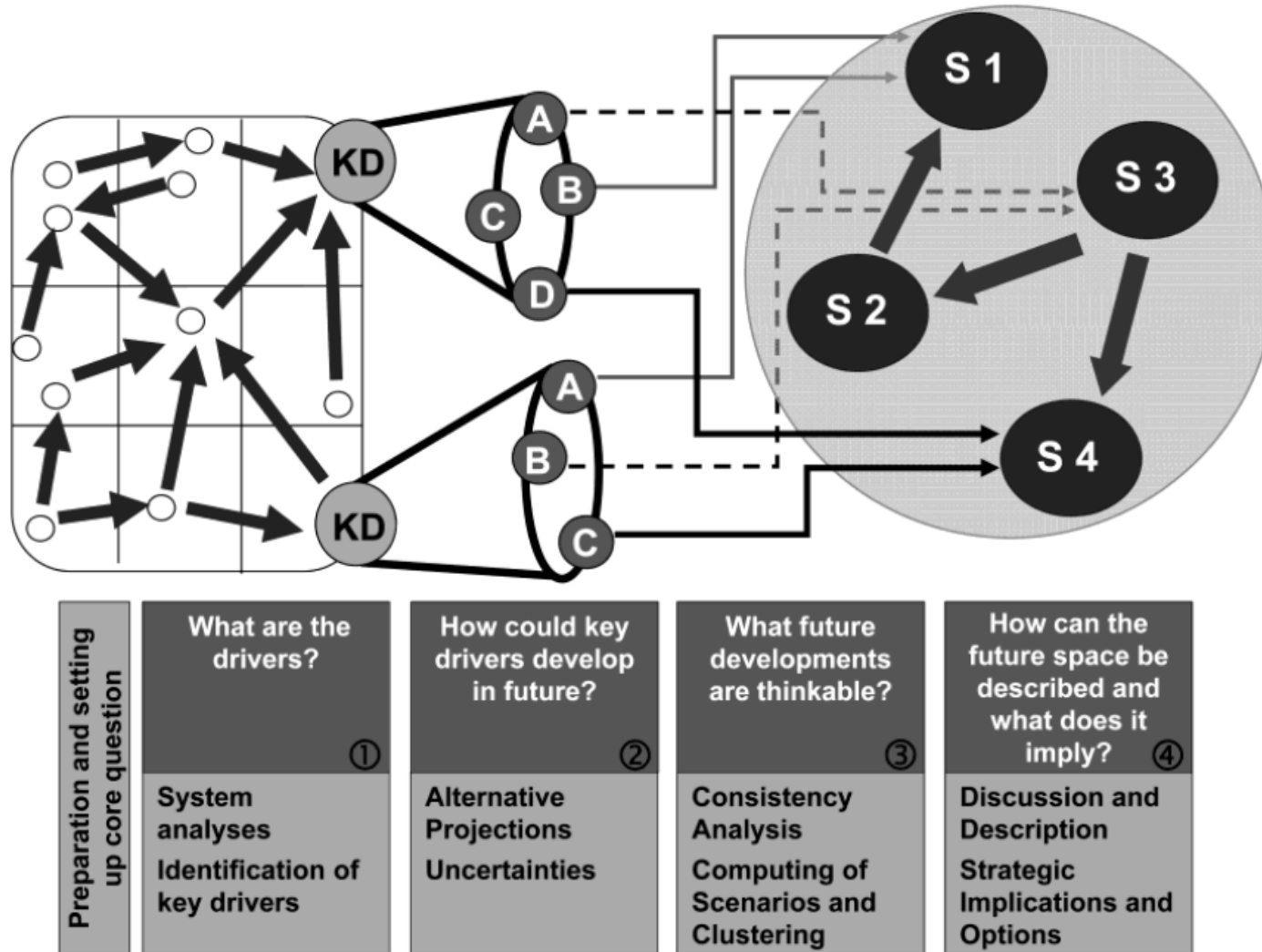


IMLA first semester summer 2022, Main Project Freising waterscapes:

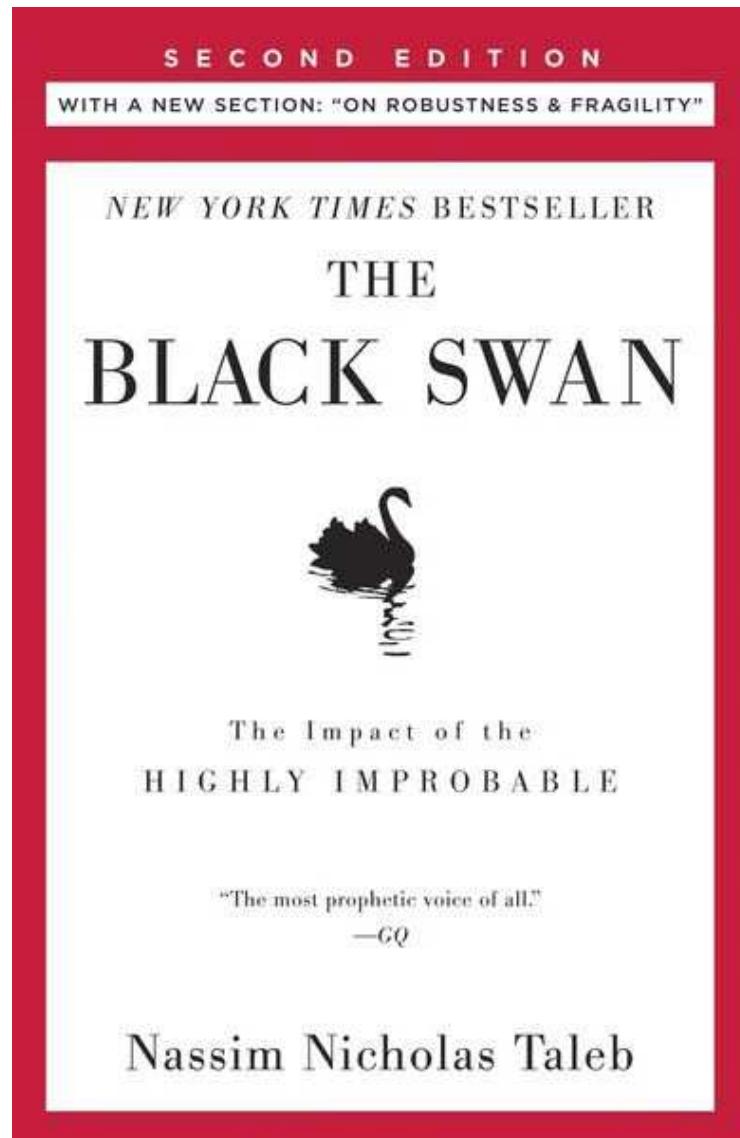
Fabrizio Albion, Nóra Buffham, Delaram Kouhestani, Kees van Roon, Gentiane Thaci

Scenario-based analysis at a glance

12



Steps of scenario analysis (adapted from Fink et al. 2004) , in: Burandt (2011) Szenarioanalyse als Lernsetting für eine nachhaltige Entwicklung

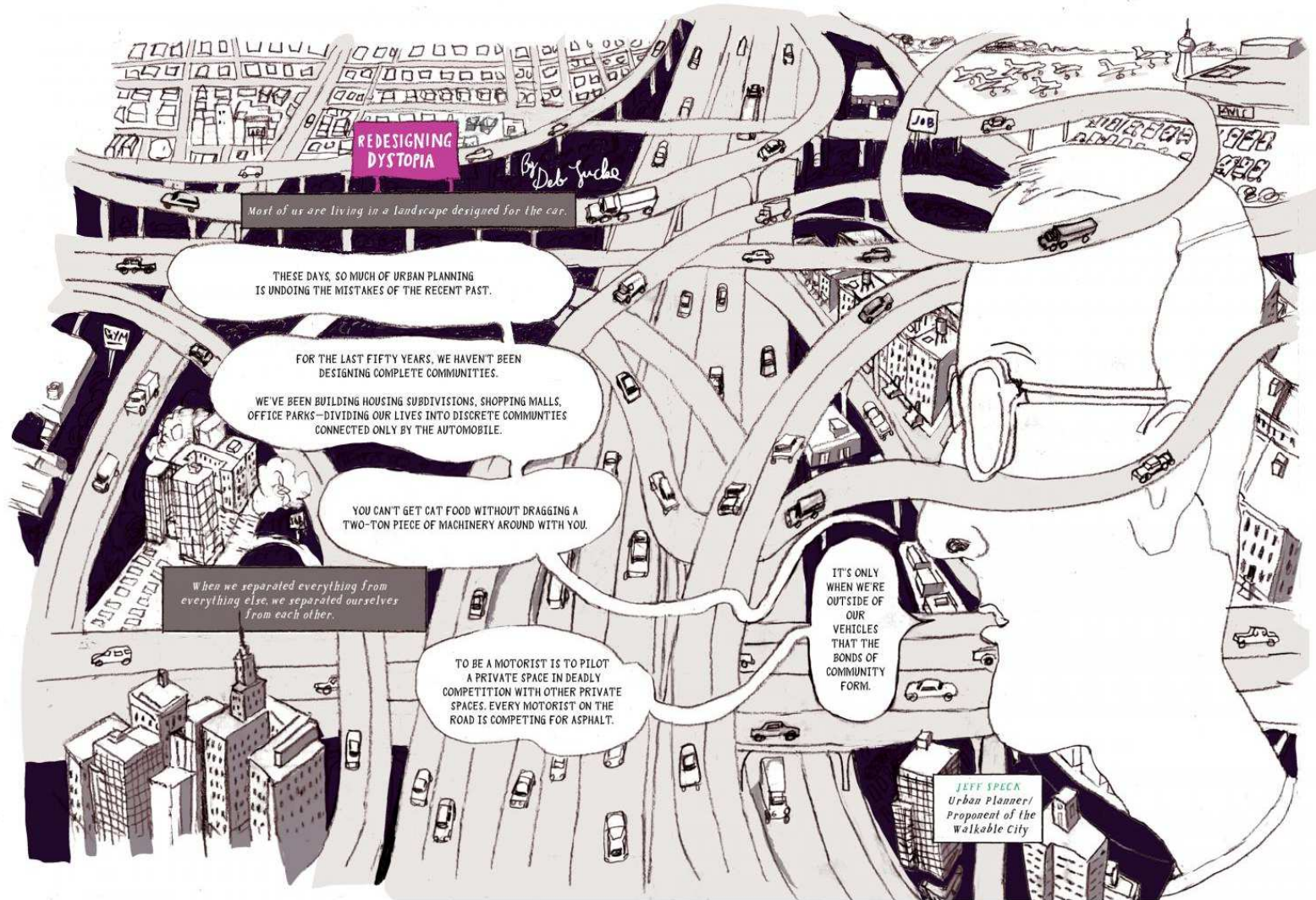


Use Scenarios to broaden your imagination

Explore all possible futures
Include the unthinkable into your scenario

Black Swan Events
or
,Wild Cards'

Visualise alternative futures. Make them specific to your landscape.



<https://www.vqronline.org/interviews-articles/2021/09/redesigning-dystopia>

**In you teams, co-design new narratives.
Who are the actors? What is the plot? Any new protagonists?**

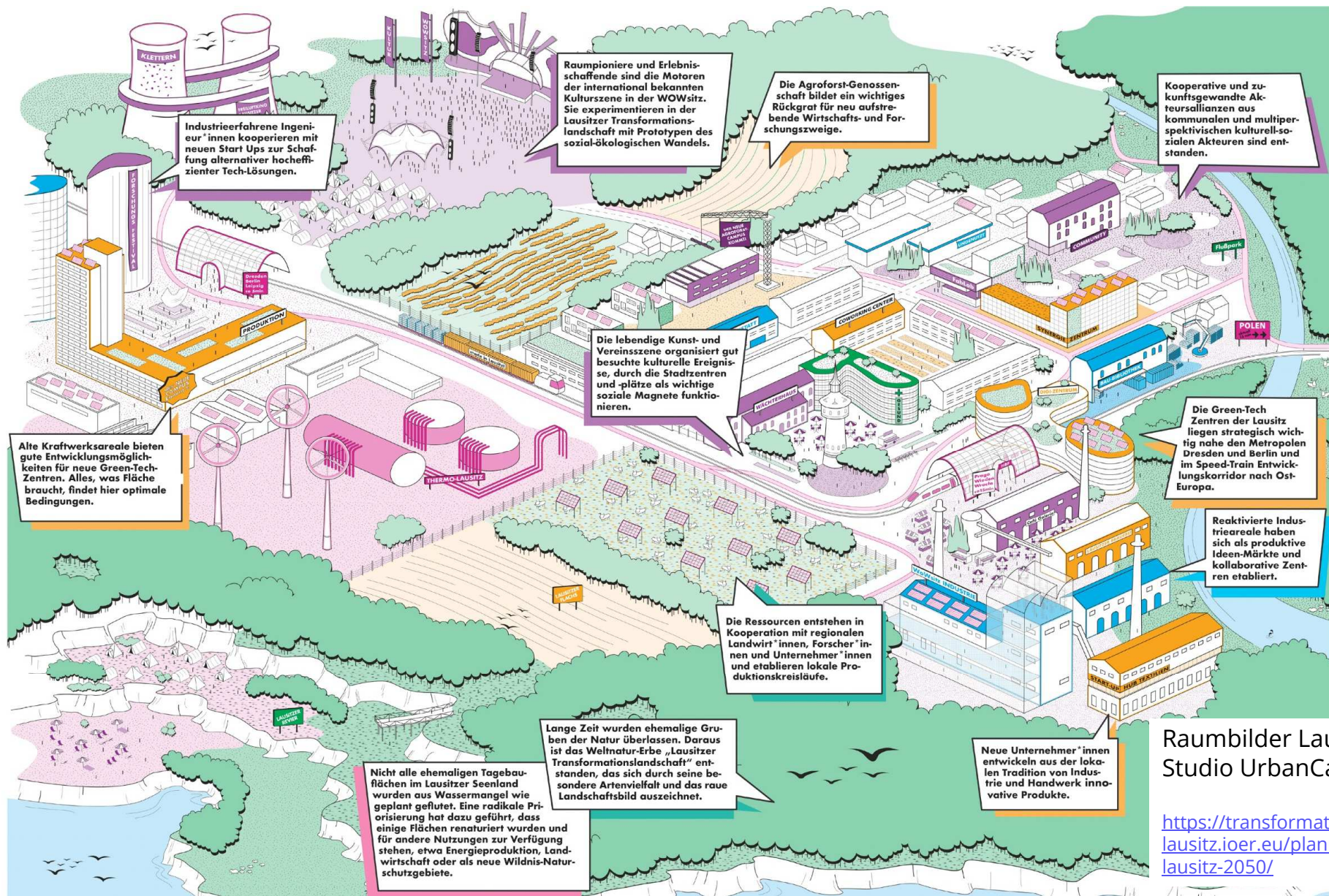


Visualise alternative futures. Make them specific to your landscape.



Example: Berlin Strategy 2030 / Stadtentwicklungskonzept Berlin 2030 (StEK 2030)

Source: Urban Catalyst, <https://www.urbancatalyst.de/de/projekte/berlin-strategie-2030.html>



Raumbilder Lausitz 2050 Studio UrbanCatalyst, Berlin

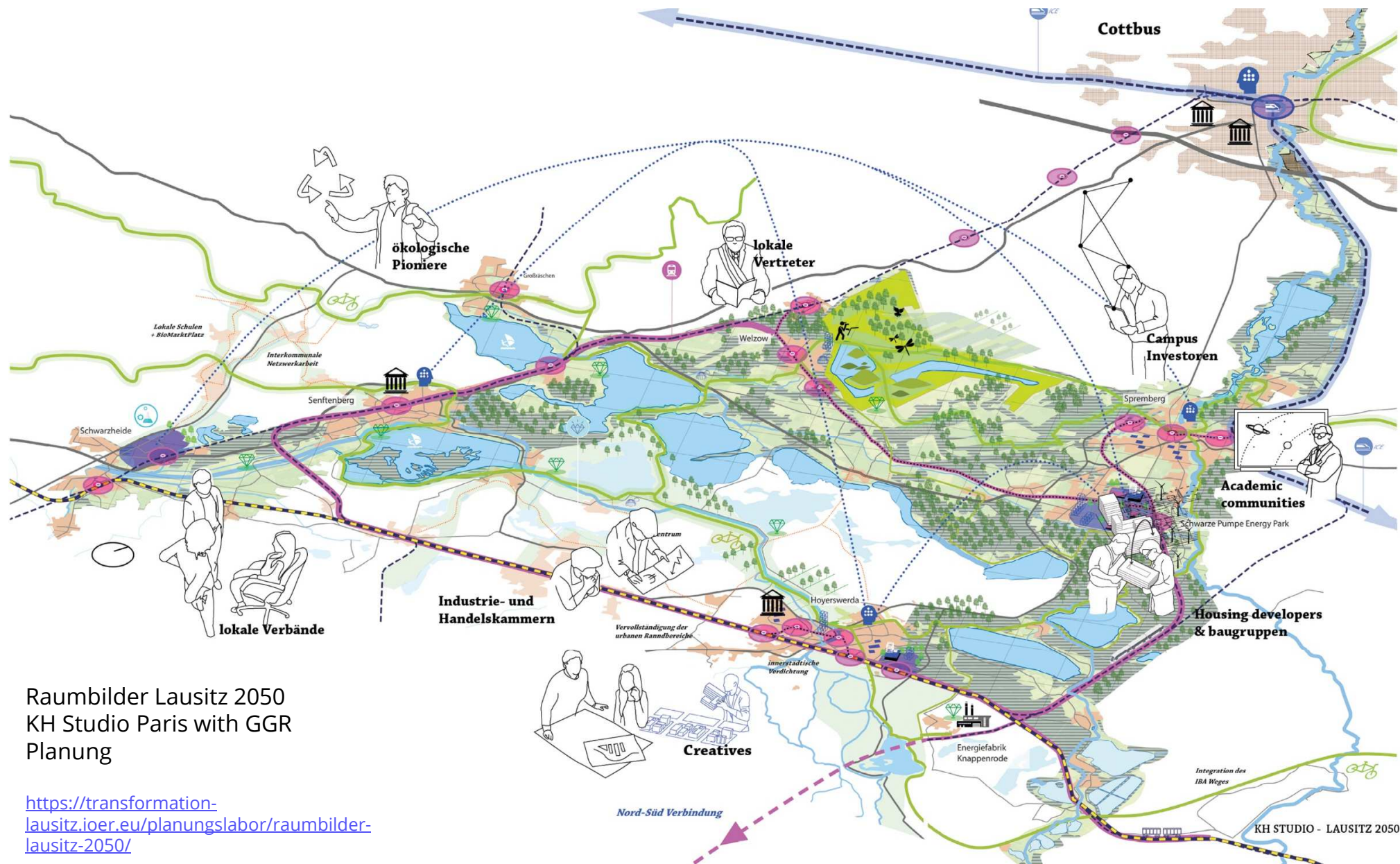
<https://transformation-lausitz.ioer.eu/planungslabor/raumbilder-lausitz-2050/>



Zoom in

Raumbilder Lausitz 2050
Studio UrbanCatalyst, Berlin

<https://transformation-lausitz.ioer.eu/planungslabor/raumbilder-lausitz-2050/>



Raumbilder Lausitz 2050
KH Studio Paris with GGR
Planung

<https://transformation-lausitz.ioer.eu/planungslabor/raumbilder-lausitz-2050/>



Potenzialfelder Dynamisches Band, Quelle: berchtoldkrass, UC STUDIO, S.US

Example: Potenzialfelder Dynamisches Band, Quelle: berchtoldkrass, UC STUDIO, S

https://www.karlsruhe.de/b3/bauen/publikationen/leitbild/HF_sections/content/ZZnP1xobDqKxo8/ZZnP1ARzVCkfnh/R%C3%A4umliches%20Leitbild%20-%20Kurzfassung%20Teil%202%20Seiten%2017-32.pdf

KREATIV LEBEN an der Panke



Sämtliche öffentliche Plätze und Spielplätze im QM-Gebiet wurden seit 2002 durch das Quartiersmanagement Pankstraße neu gestaltet.



DEIN KIEZ. DEINE IDEEN. DEIN ENGAGEMENT.

KREATIV LERNEN an der Panke



Diese und weitere Bildungseinrichtungen im Quartier sind Partner im Kulturbildungsnetzwerk Pankstraße, der 2009 durch das QM initiiert wurde.



DEIN KIEZ. DEINE IDEEN. DEIN ENGAGEMENT.

KREATIV ARBEITEN an der Panke

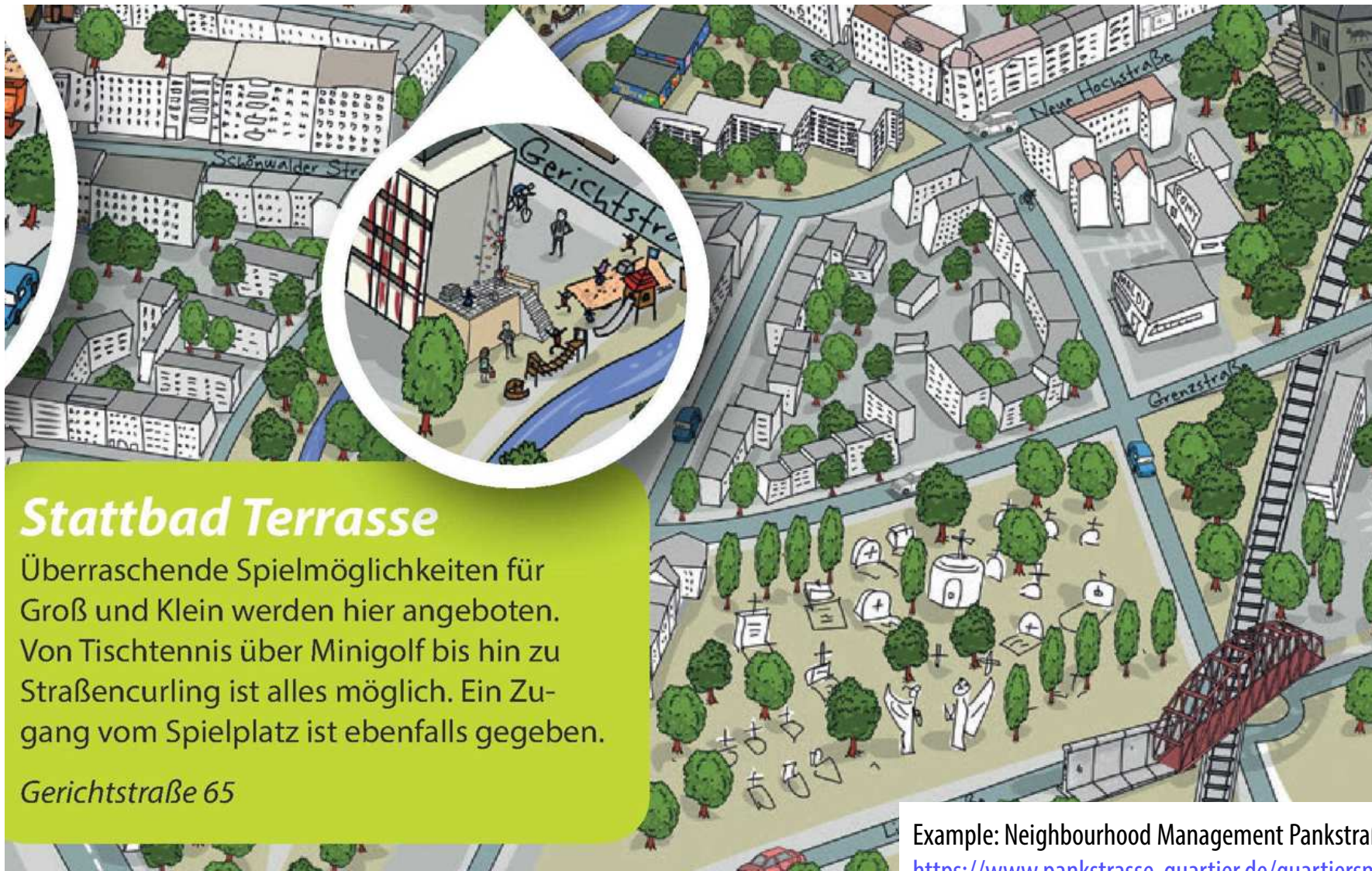


Im Quartier Pankstraße haben sich folgende Standorte der Kreativwirtschaft entwickelt:



DEIN KIEZ. DEINE IDEEN. DEIN ENGAGEMENT.

Example: Neighbourhood Management Pankstraße, Berlin-Mitte
<https://www.pankstrasse-quartier.de/quartiersmanagement/aufgabenziele>



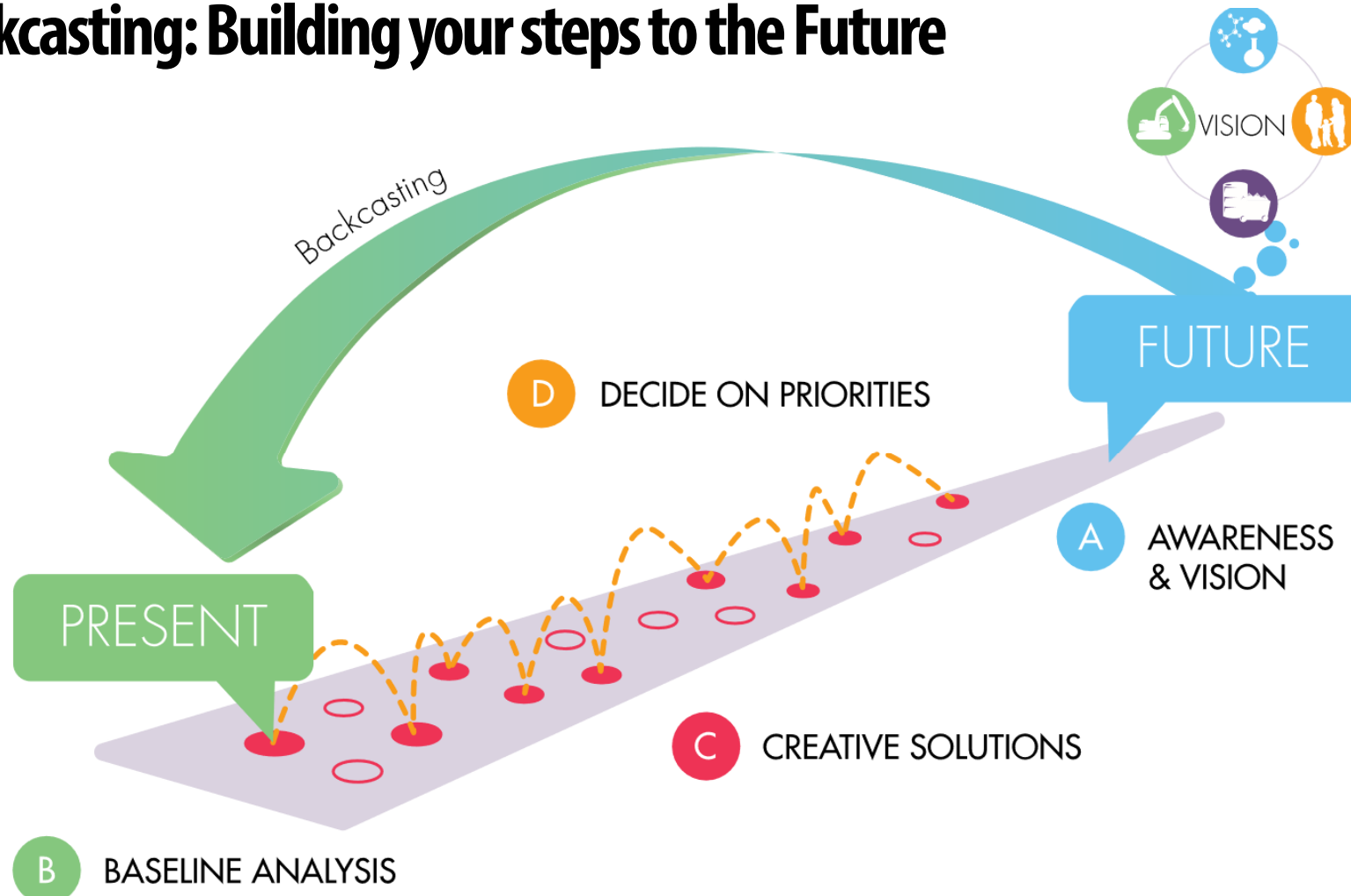
Stattbad Terrasse

Überraschende Spielmöglichkeiten für Groß und Klein werden hier angeboten. Von Tischtennis über Minigolf bis hin zu Straßencurling ist alles möglich. Ein Zugang vom Spielplatz ist ebenfalls gegeben.

Gerichtstraße 65

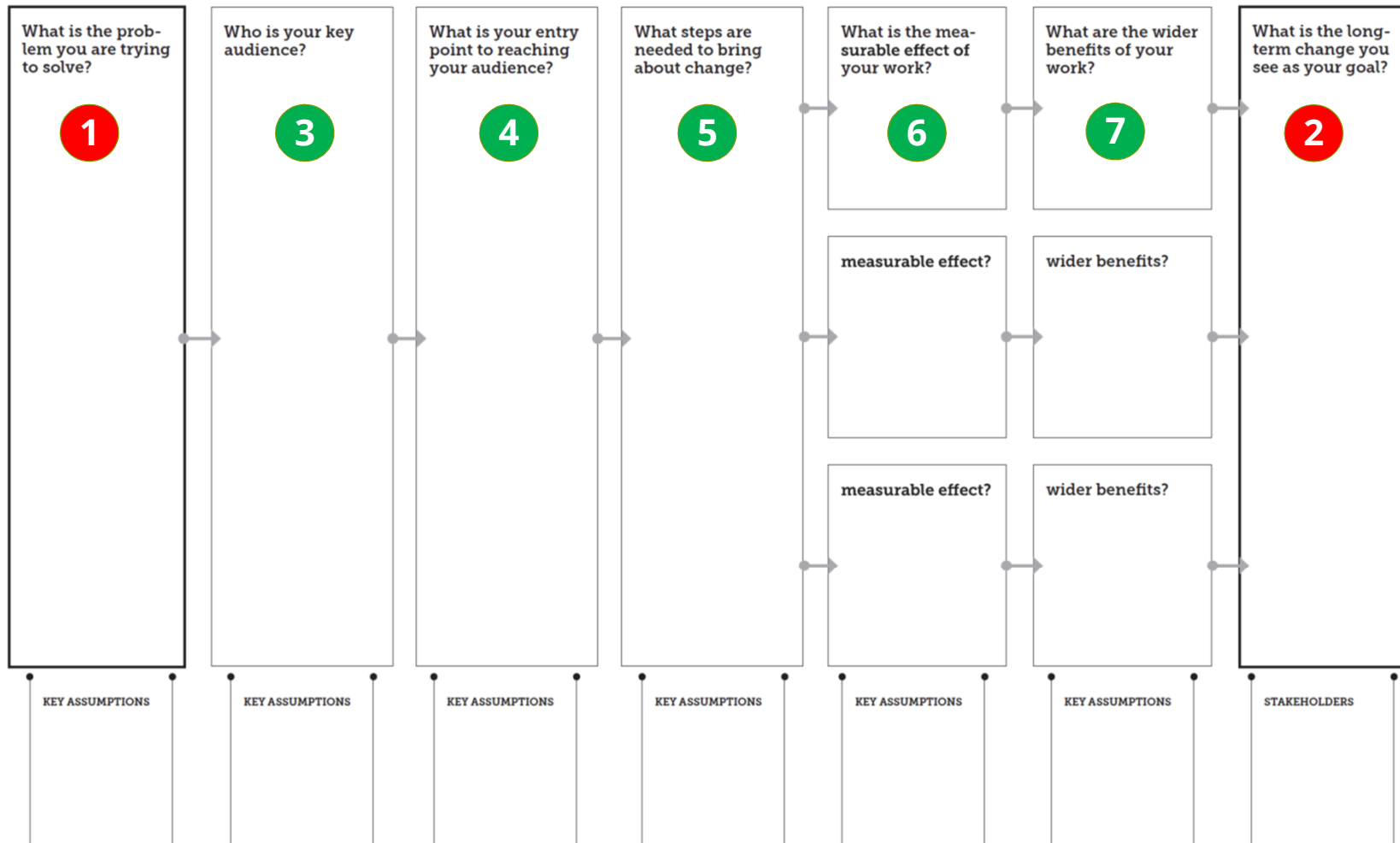
Example: Neighbourhood Management Pankstraße, Berlin-Mitte
<https://www.pankstrasse-quartier.de/quartiersmanagement/aufgabenziele>

Backcasting: Building your steps to the Future



<https://www.thenaturalstep.de/solution/abcd-process/>

Strategy Building with the Theory of Change Canvas



Here you will map your social innovation idea.

How will your landscape work?

Thinking landscape through economy

Thinking economy through landscape

The TELOS seminar process

Understanding System Logics

18.10.-21.11.22

Online
Sessions

5 double sessions + 1 session

Theories of Change

28.11. – 12.12.22

3 sessions

System Modeling

19.12.-23.01.22

4 sessions

Assignments

Pre Concept Map

Landscape System Analysis:
Backcasting

Landscape System Analysis:
Forecasting

Landscape System Modeling

Post Concept Map

The **online plenary** meets on **Mondays** from **16 00 - 17 30 CET**

Attention: the first five sessions are double length: 16 00 - 17 15, 17 30 - 18 45

The TELOS seminar assignments

10 ECTS Model (recommended) [\[edit \]](#)

This model requires that you are working on a spatial context, which might typically be your studio project area. You may ask your local supervisors if you can combine the TELOS approach with your studio project activities.

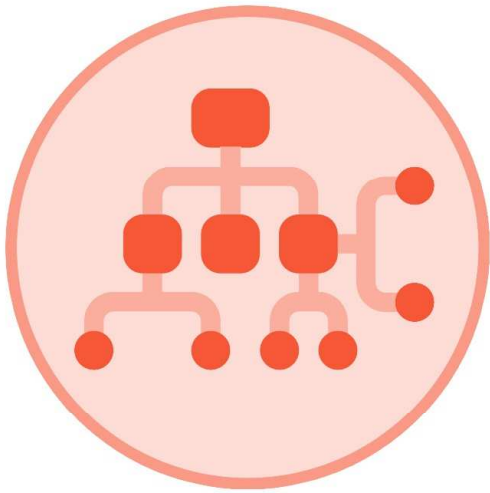
Nr	Assignment	presented on	Submission	Working Mode	Assessment
1.1	Pre-Seminar Concept Map	submission of PDF version	17.10.2022	individual	not graded but compulsory
2.1	Landscape System Analysis: Backcasting	Online in the plenary on 21.11.2022	12.12.2022	Team Product	40% of total grade (including 2.2)
2.2	Landscape System Analysis: Forecasting	Online in the plenary on 12.12.2022	12.12.2022	Team Product	40% of total grade (including 2.1)
3	Landscape Systems Modeling	Online in the plenary on 23.01.2023	23.01.2023	Team Product	60% of total grade
1.2	Post-Seminar Concept Map	submission of PDF version	06.02.2023	individual	not graded but compulsory

5 ECTS Model [\[edit \]](#)

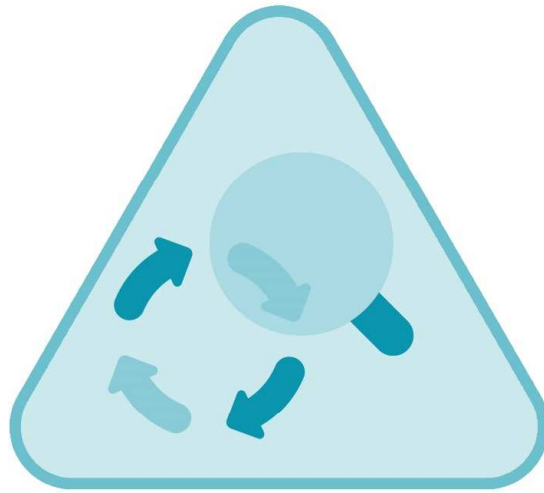
This model assumes that you are not working on a local project context. This context is needed if you want to work on assignments 2 & 3. This model is a flexible way of participating actively in the TELOS seminar if your schedule does not allow for more engagement.

Nr	Assignment	presented on	Submission	Working Mode	Assessment
1.1	Pre-Seminar Concept Map	submission of PDF version	17.10.2022	individual	not graded but compulsory
4	Field Research on Good Practices	Online in the plenary on 12.12.2022	12.12.2022	individual product	Grade 100%
1.2	Post-Seminar Concept Map	submission of PDF version	06.02.2023	individual	not graded but compulsory

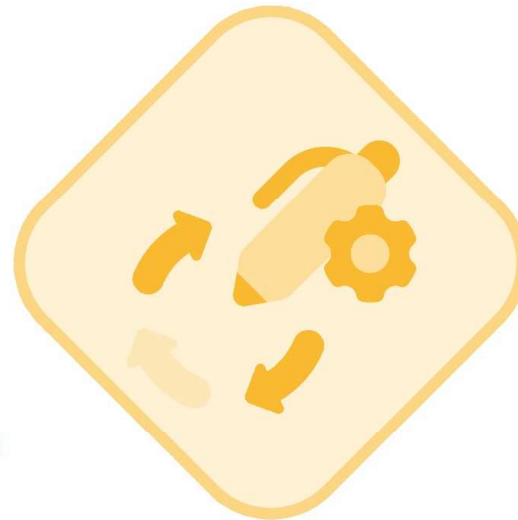
The TELOS seminar assignments



Assignment 1



Assignment 2



Assignment 3



Assignment 4

The TELOS seminar assignments: #2.2

Landscape System Analysis Part 2: Forecasting

Group assignment

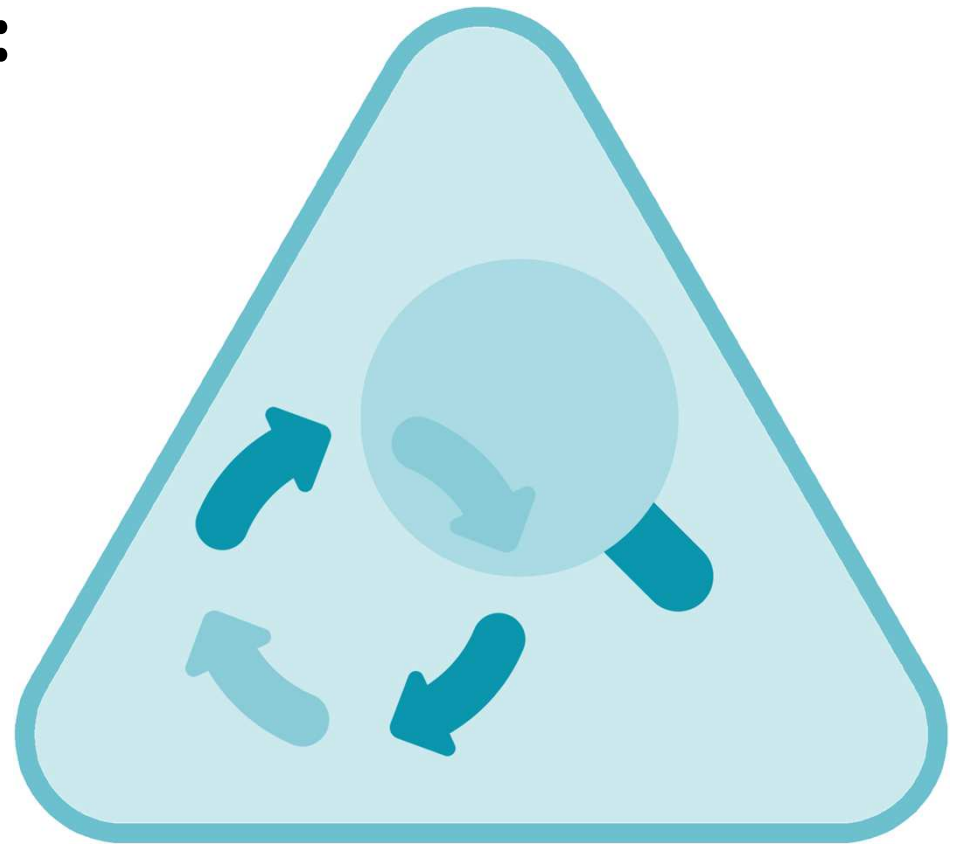
Start: October 10, 2022

Presentation: December 12 and 14 for Sapienza

Submission: December 12, 2022 (together with part 1)

Digital submission on ILIAS: https://ilias.hfwu.de/goto.php?target=exc_39570&client_id=hfwu

All assignment details: https://telos.hfwu.de/index.php?title=Assignment_2:_Landscape_System_Analysis



The TELOS seminar assignments: #2.2

Landscape System Analysis: Forecasting

Some guiding questions – but feel free to develop your own approach:

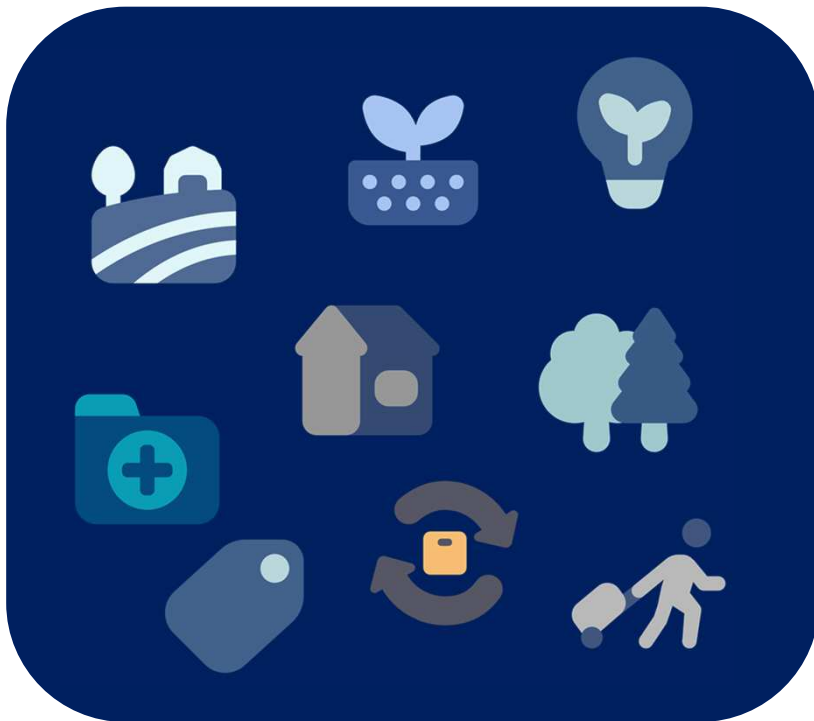
- Which development trends might impact your landscape over the coming 50 years? Try to integrate local and global developments and multiple sectors, based on your knowledge from the TELOS lectures.
- Reflect on the future cause-effect relationships: Which pressures on your landscape are plausible? Who and what in your landscape will be impacted in the future?
- Forecast variants, ranging from possible to plausible, and visualise them taking the specifics of your local landscape into account.
- Evaluate these futures: Which future needs to be avoided and why? And which future should we build and why?
- Make sure that your assumptions are rooted in locally relevant landscape knowledge and plausible data gathered during your analysis.
- Make sure that you identify a sustainability challenge in your landscape that you want to address further in the next assignment.

Digital submission on ILIAS: https://ilias.hfwu.de/goto.php?target=exc_39570&client_id=hfwu

All assignment details: [https://telos.hfwu.de/index.php?title=Assignment 2: Landscape System Analysis](https://telos.hfwu.de/index.php?title=Assignment_2:_Landscape_System_Analysis)

The TELOS seminar assignments: #2.1

Landscape System Analysis: Understanding the story so far

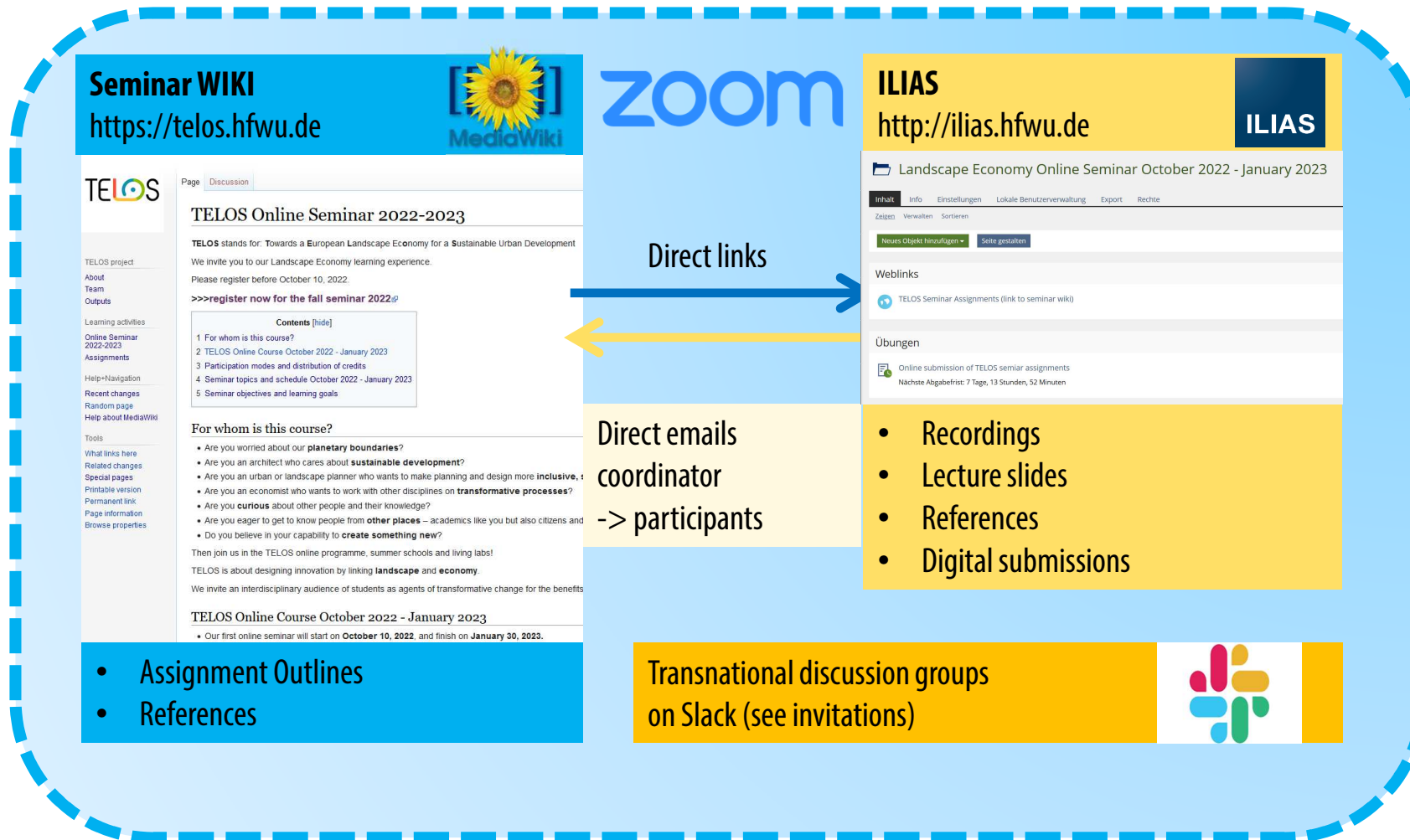


Your local team: an integrated system analysis
of your local landscape case



Transnational TELOS discussion teams: in-depth views on
sectors with our TELOS experts

TELOS Seminar Media Landscape



Teams organise their own working environment

Neckar Valley Competition is organised on the LE:NOTRE ILIAS Platform

Next steps

- Finalise your system model from the past to the present
- Decide on the development trends you want to take into account
- Forecast alternative futures: How will the landscape be?
- Evaluate and decide which future you want
- Prepare for the tutored session on December 5

THANK YOU

