



REVIEW OF PHASE C



phase D

Collaborative Design, Transformation and Testing

D.1 - Ancient monasteries as possible prototype

Lecturer: Luigi Bartolomei, Francesco

Lipparini

D.2 - prototype as community engagement

build your prototype

Lecturer: Anna Szilágyi-Nagy

D.3 - sharing / testing prototypes session


it is your turn to lecture us!



AGENDA D.1

- Review of phase C - 10 minutes
- **Theory - 50 minutes**
- Reflection - 20 minutes
- Assignment - 10 minutes

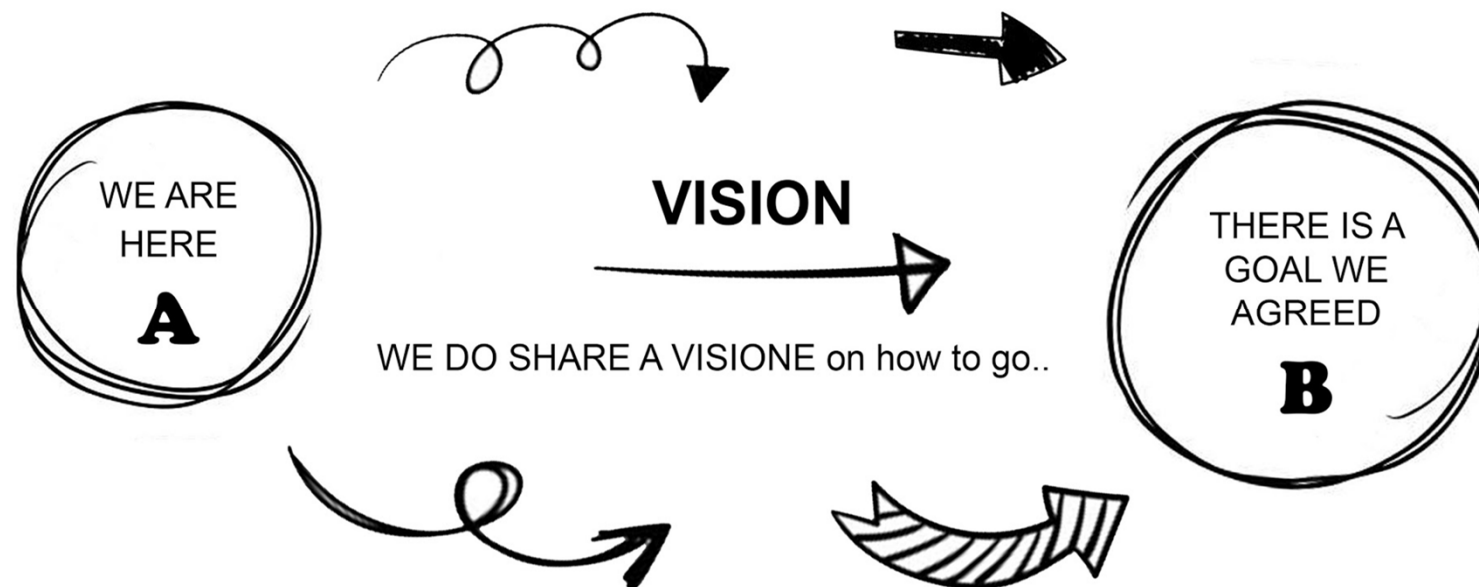
let's start !



*A few example of prototypes.
theoretical references and
practical cases*

*A tale by
Luigi Bartolomei*

PARTICIPATORY DESIGN IS LIKE A TRIP

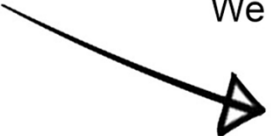




a **VISION**
means



SELFAWARNESS
We know where we are



WE AGREED ON OUR GOAL
which we have built together



WE HAVE A GENERAL VIEW
on how to go from A to B

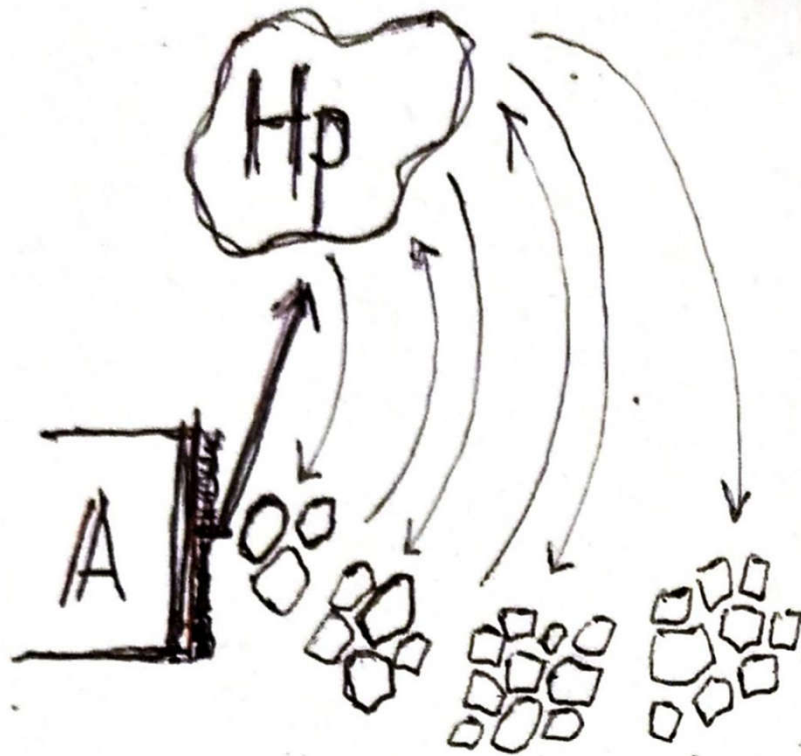


WE HAVE A STRATEGY
but not a plan



We all know we are in Bologna
and we agreed to go to Florence
but how to choose among
many different ways?

How to transform a
VISION into a **PLAN**?
How to design?



~~_____~~ in the planning
 of a participatory
 project, ~~REFERENCES AS~~
 such as important like in a design
 process.

prototyping allows to
 plan and to foresee

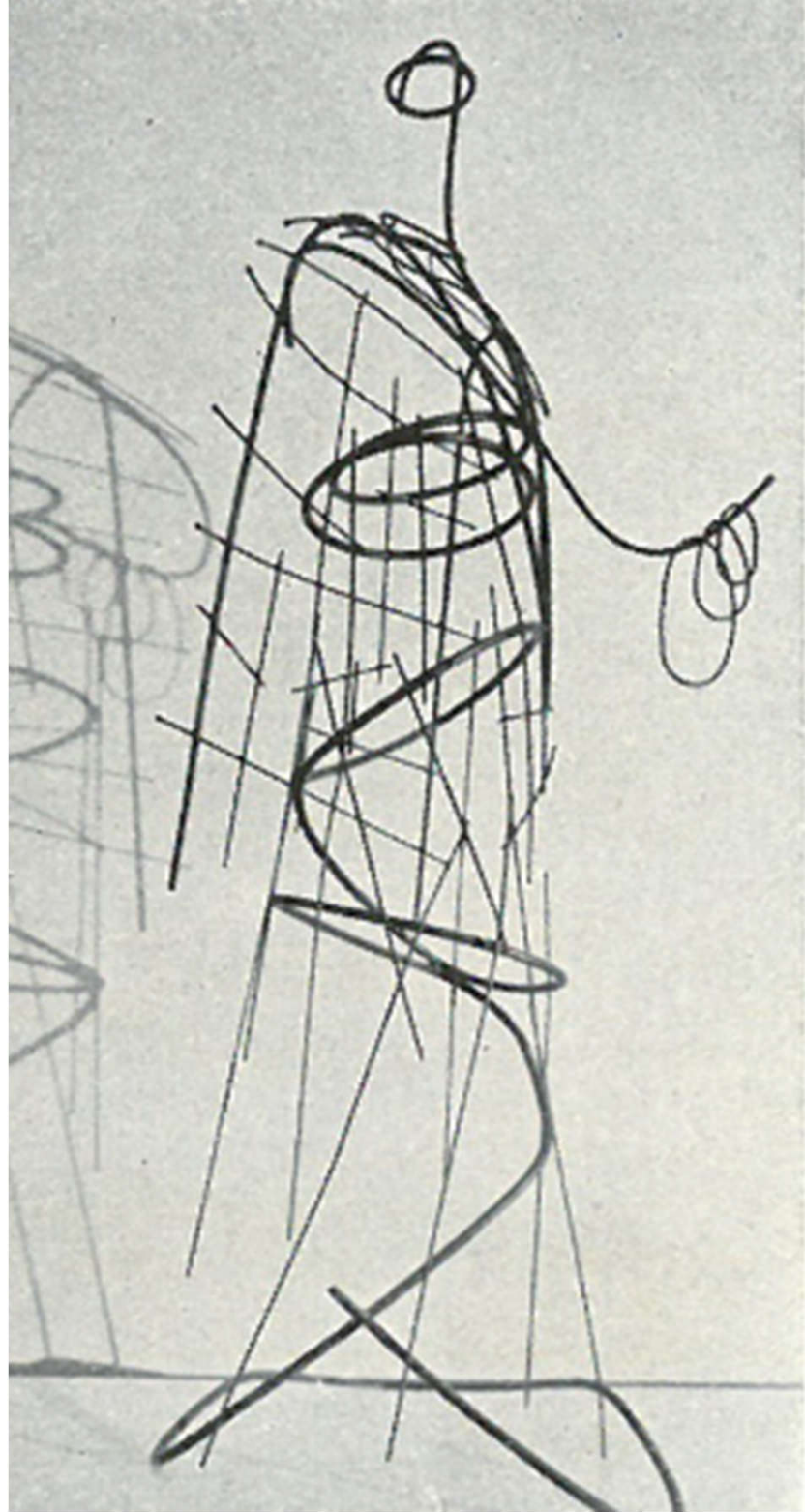
Hp : A REFERENCE,
 AN EXPERIENCE
 A "PROTOTYPE" πρωτό - τύπον

“Dieci anni di Architettura Sacra in Italia”

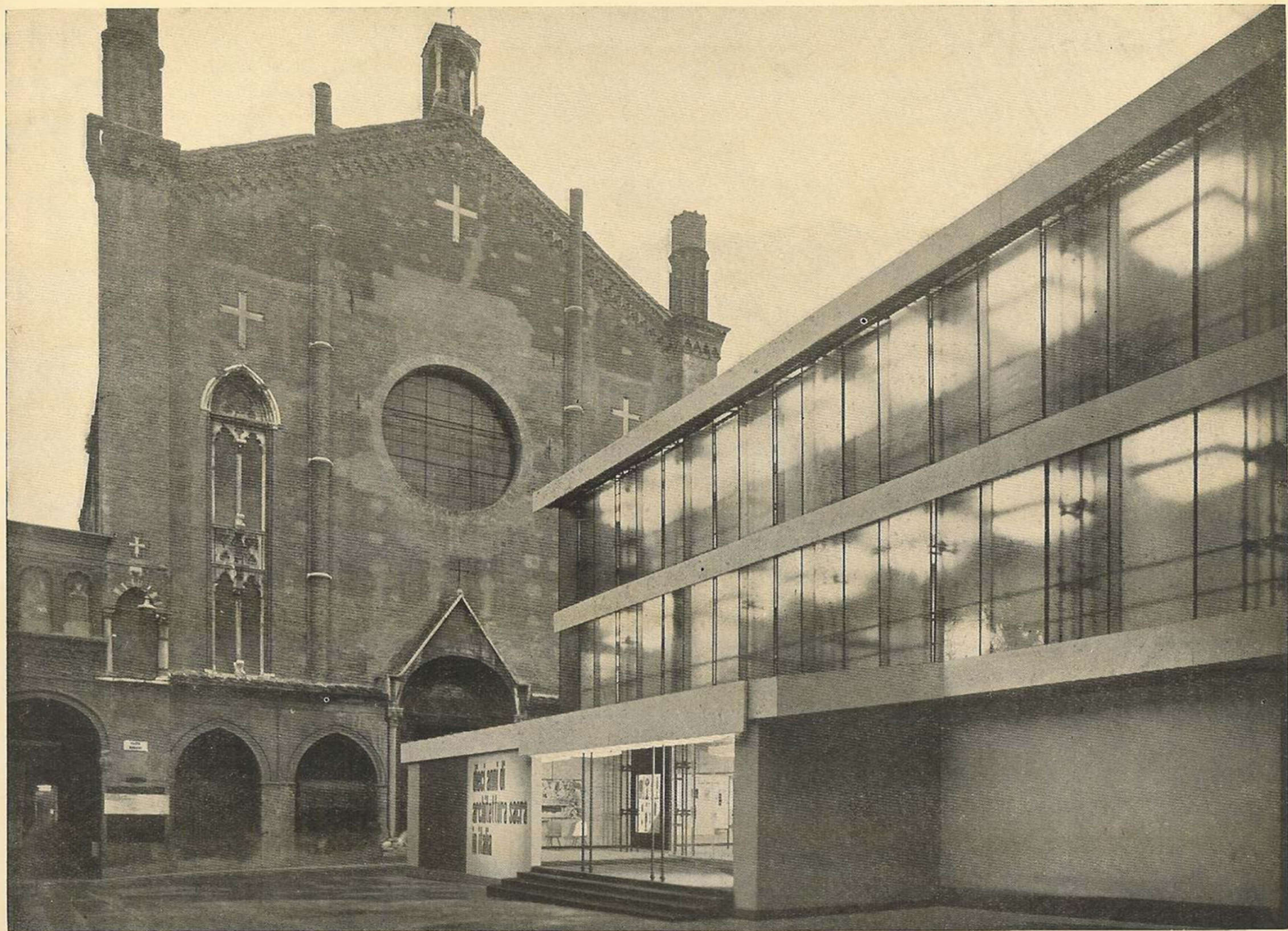
23-25 Settembre 1955

Convegno e mostra presso il complesso monumentale di San Giacomo Maggiore, portico Bentivogliesco e piazza Rossini, Bologna

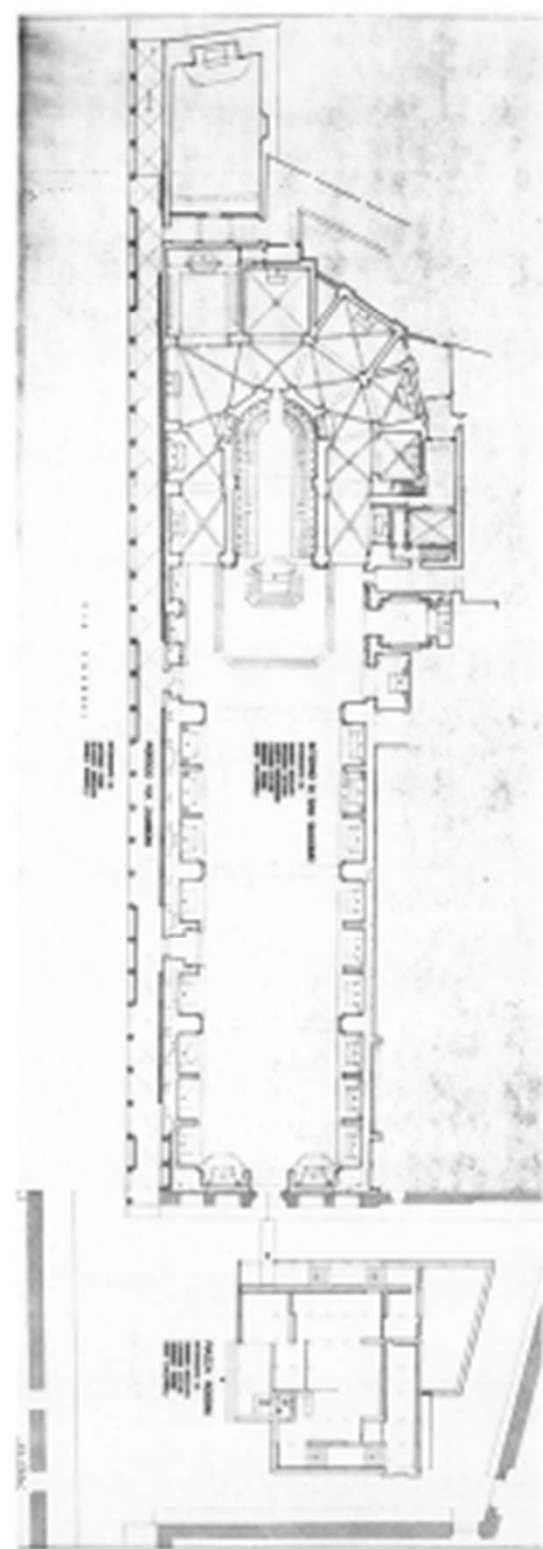


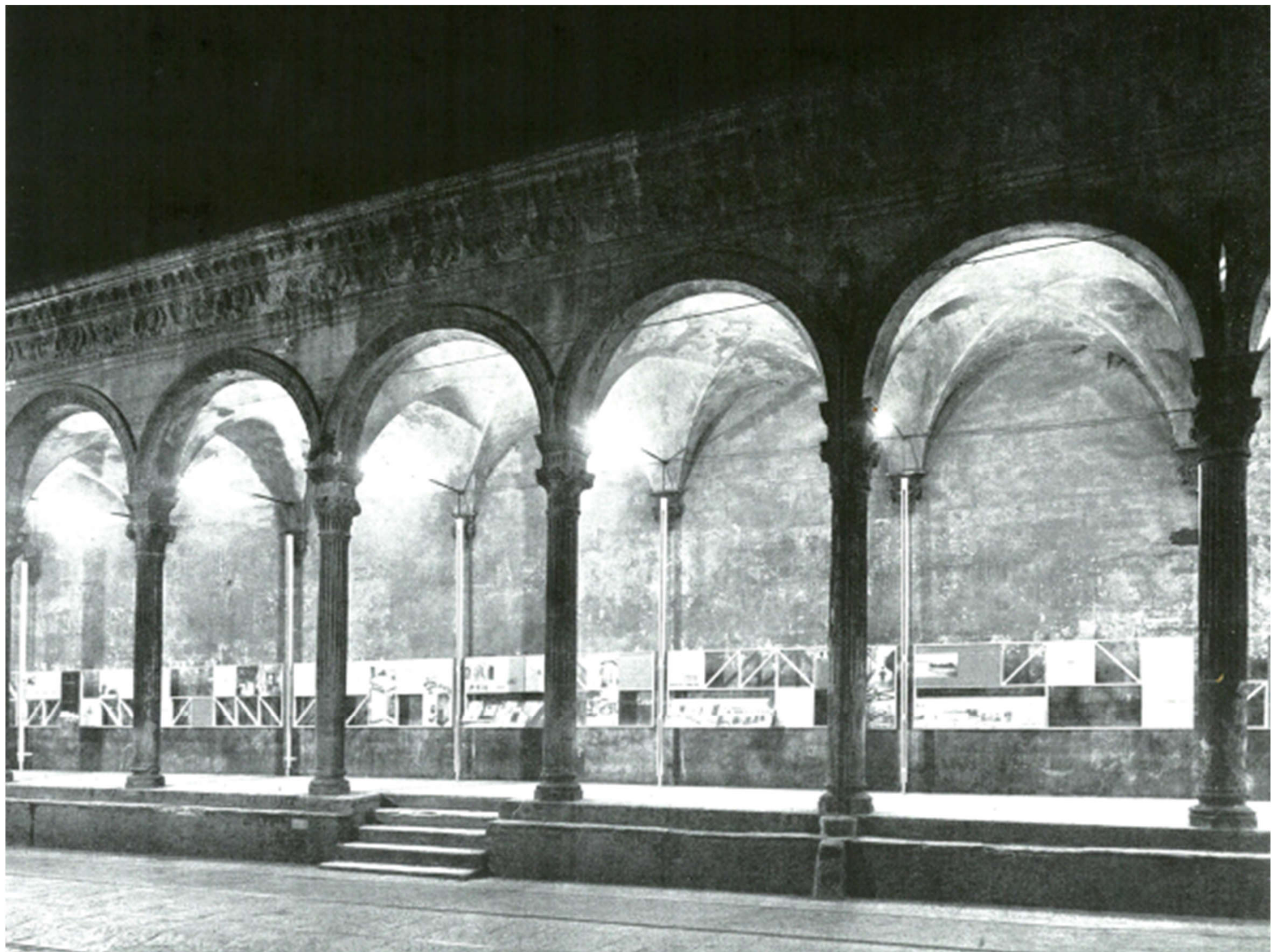


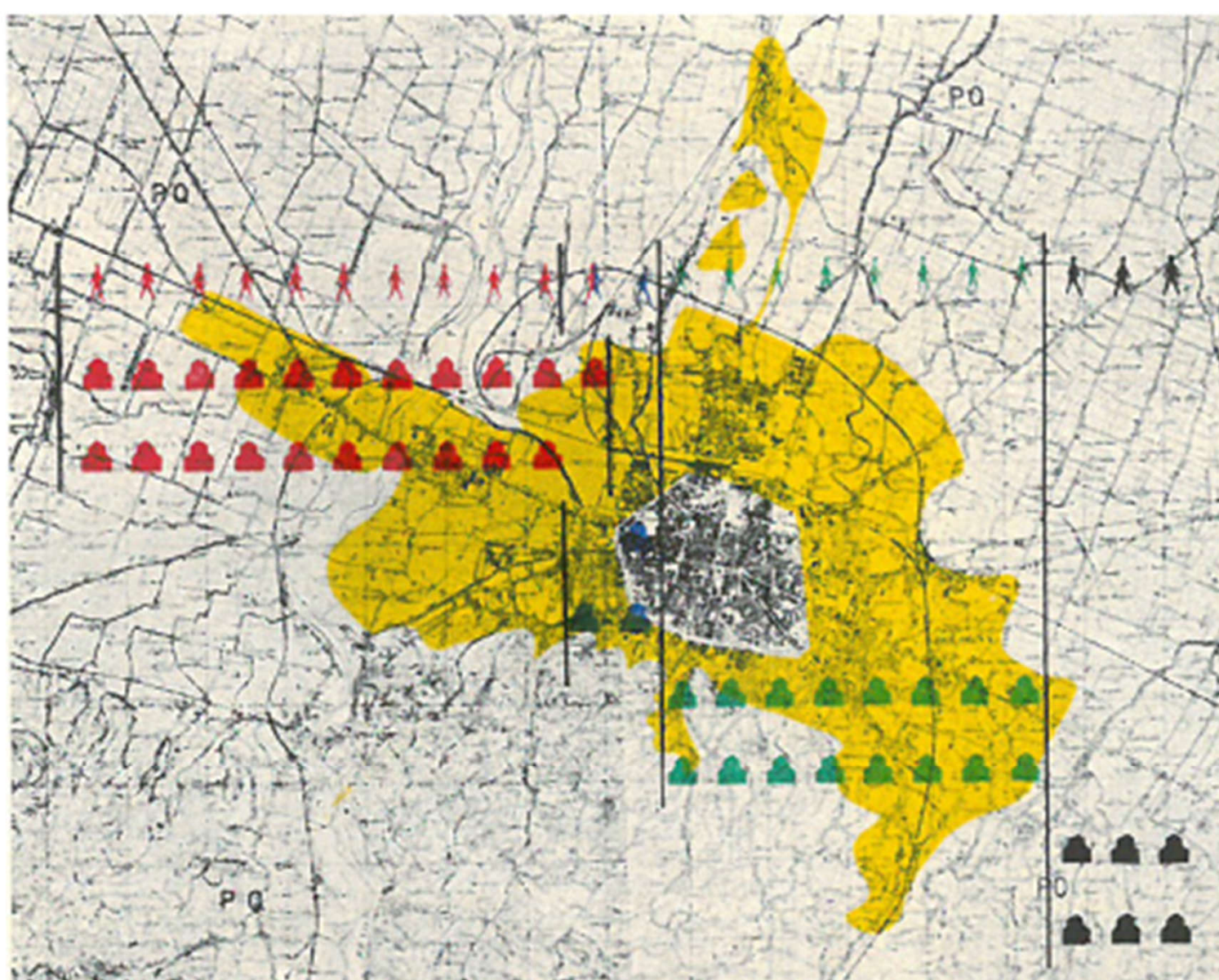




mostra nazionale







▲ 19. - Chiese esistenti.

Eglises existantes.
Existing churches.
Existierende Kirchen.

▲ Chiese in costruzione (1^a fase).

Eglises en train d'être bâties (1ère phase).
Churches under construction (first phase).
Kirchen im Bau (Erste Phase).

▲ Chiese provvisorie.

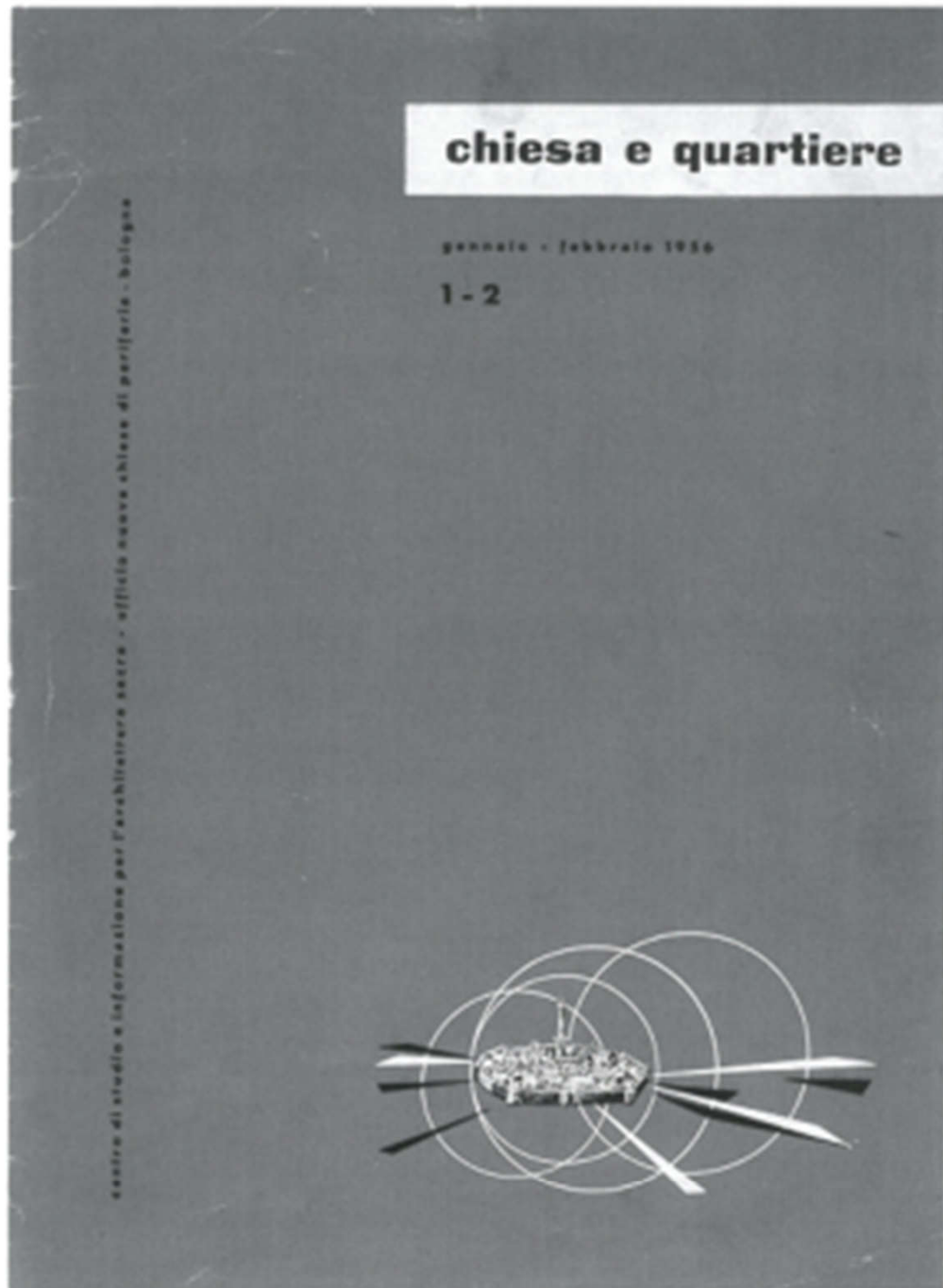
Eglises provisoires.
Temporary churches.
Provisorische Kirchen.

▲ Chiese da costruire (2^a fase).

Eglises à bâtir (2ème phase).
Churches still to be built (second phase).
Zu erbauende Kirchen (Zweite Phase).

† Comunità parrocchiali di 10.000 abitanti.

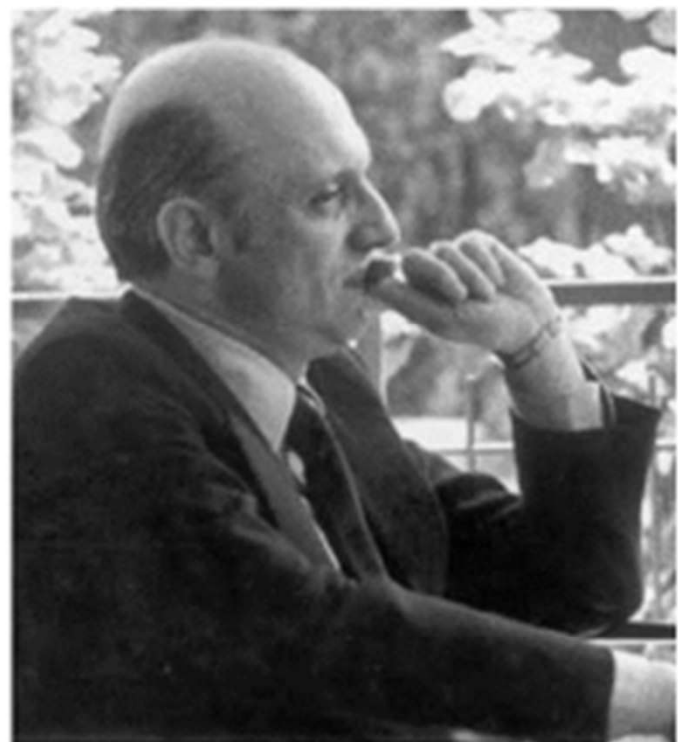
Communautés paroissiales de 10.000 habitants.
Parish communities for 10,000 inhabitants.
Pfarrgemeinden mit 10.000 Einwohnern.



« Chiesa e quartiere », 1-2, 1956.
Primo fascicolo fuori serie con grafica impaginazione
e redazione di Giorgio Trebbi



Copertina del n. 1, 1957, volume monografico
dedicato al Saggio di Luigi Figini « Il tema del Sacro
nell'architettura minore del Mediterraneo »



Giorgio Trebbi
1926– 2002



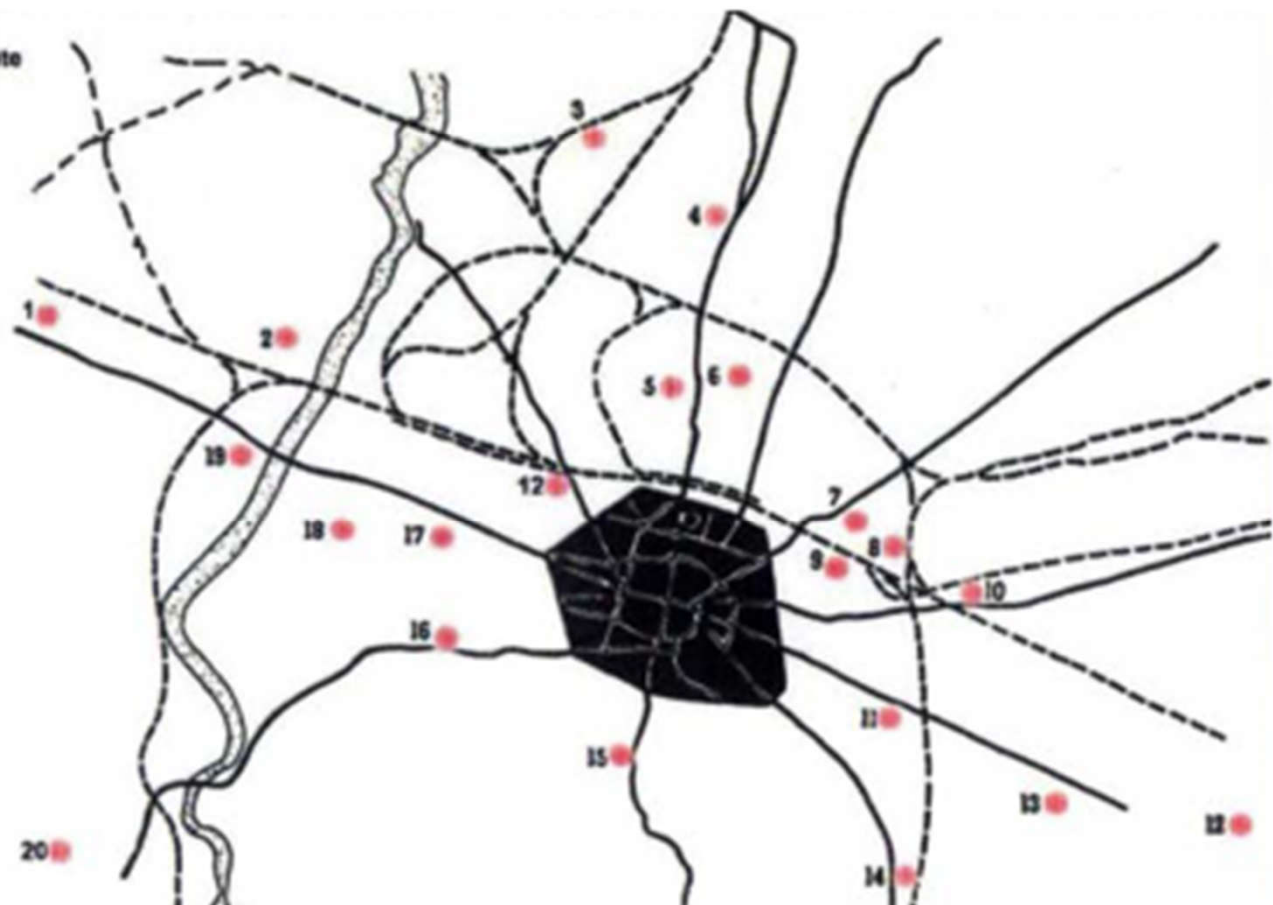
Glauco (1930 – 2016) e Giuliano Gresleri (1938 – 2020), 1957
da in_Bo. Ricerche e progetti per il territorio, la città e
l'architettura, vol. 10, n. 14

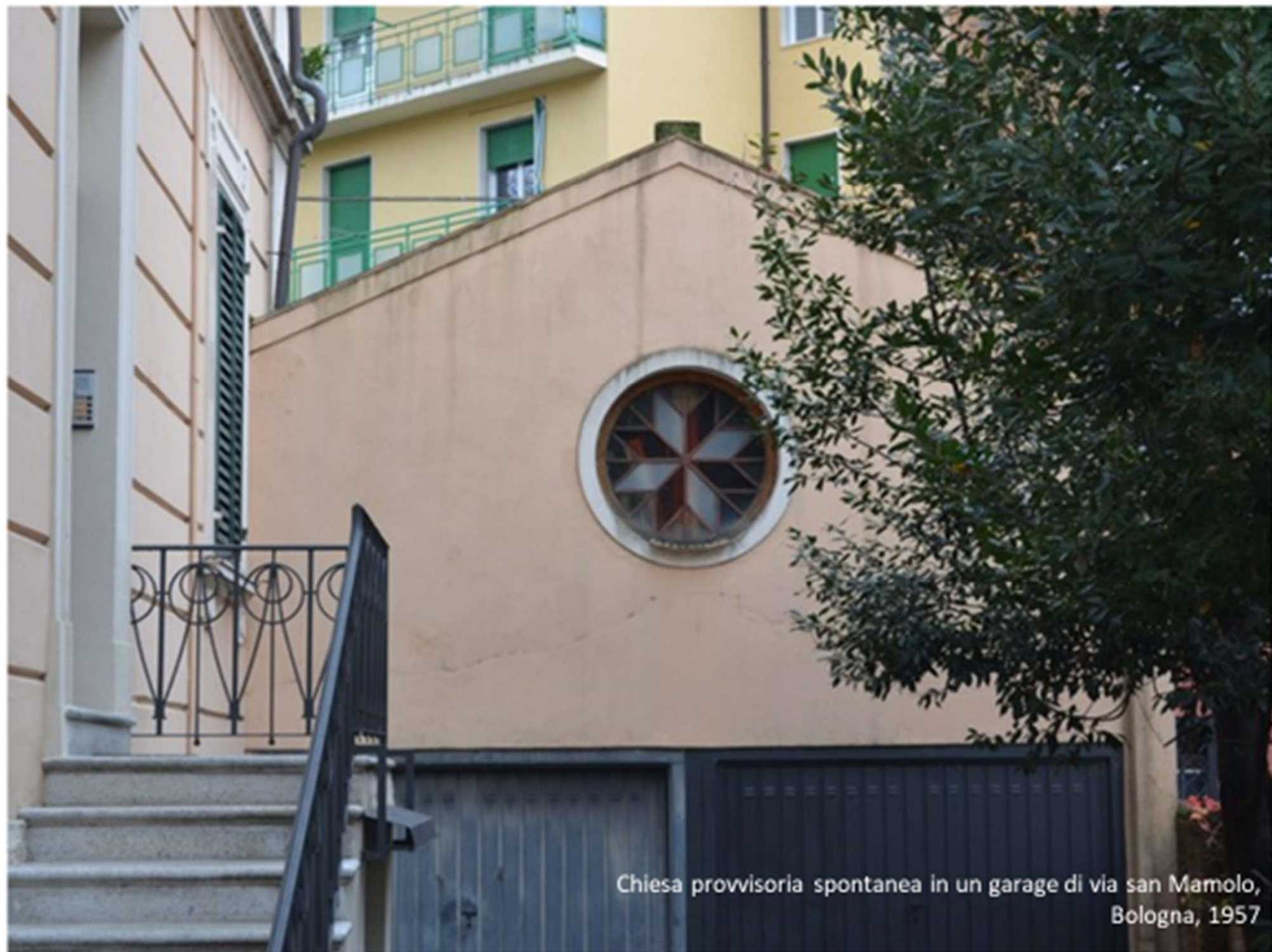


CAMPAGNA NUOVE CHIESE

terreni acquistati nel 1955 e chiese costruite

1. Cuore Immacolato di Maria Via Borgo Panigale
G. VACCARO, P.L. NERI 1955/62
2. N. S. della Pace Via Aeroporto
P. BOLOGNESI, S. PROSPERIO
3. N. S. di Fatima Via del Rosario
non realizzata
4. S. Giuseppe Lavoratore Via Corticella
C. BASSI, G. BOSCHETTI 1957/61
5. S. Cristoforo Via L. Spada
F. FORLAY 1957/73
6. Angeli Custodi Via Ferraresse
G. CEVENNI, G. COCCOLINI
7. S. Vincenza de' Paoli Via dell'Artigiano
F. MONTE 1957/62
8. S. Domenico Savio Via Mondo
G. CEVENNI, G. COCCOLINI 1958/62
9. S. Maria di Suffragio Via S. Vincenzo
I. GASPERI CAMPANI, R. BETTAZZI 1958
10. S. Rita Via Messarvini
G. MAZZANTI
11. S. Maria Goretti Via Eginone
G. SOZZATO, G. QUENZI, V. VALERIANI 1962
12. S. Maria Regina Mundi Via Ivrea-Via Zanardi
C. MASSETTI 1958/74
13. S. Giovanni Bosco Via Bellaria
G. VACCARO 1960/58
14. Madonna del Lavoro Via Ghirardini
F. SERAFINI, P. PROMONTORIO 1957/62
15. SS. Francesco S. e Mamolo Via S. Mamolo
L. VIGNALI 1964
16. Sacra Famiglia Via I. Bandiera
R. BETTAZZI, R. BETTAZZI 1966
17. S. Giuseppe Cottolengo Via Margherita
M. F. ROGGERO 1957/62
18. S. Vimmacolata Via della Certosa
G. GRESLERI 1966/61
19. S. Pio X Via della Pace
G. TREBBI 1967/62
20. S. Gemma Galgani Via Castelfidardo
V. MARTINUZZI, G. BRIGHETTI 1966/62

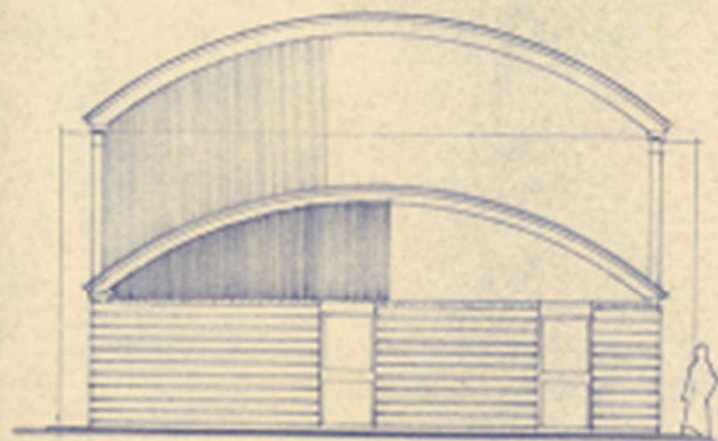
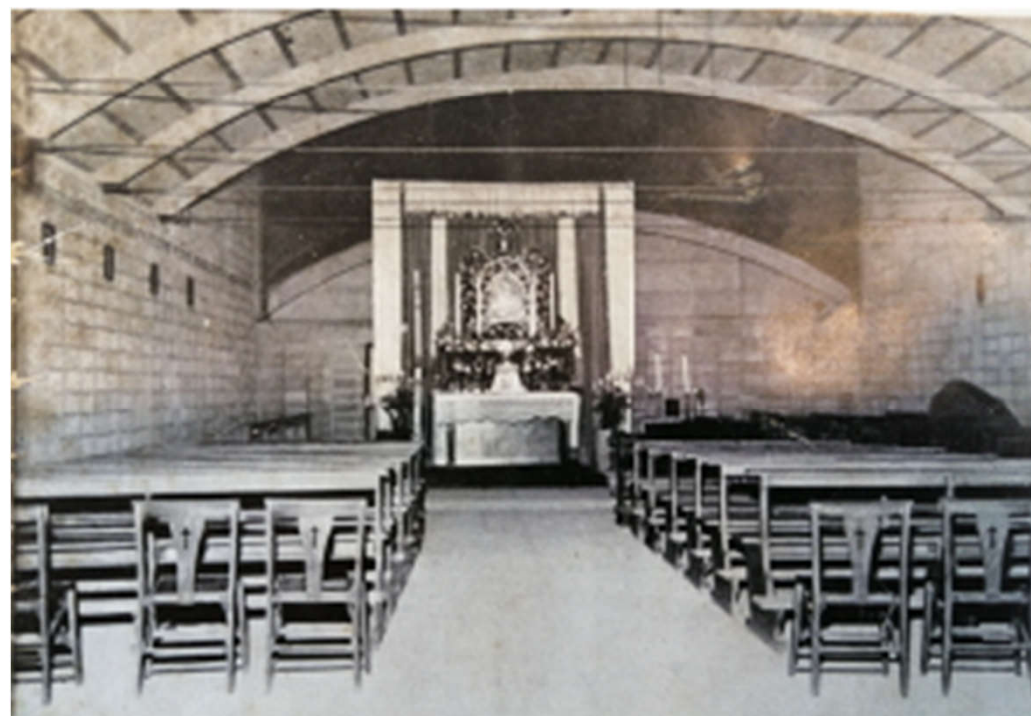




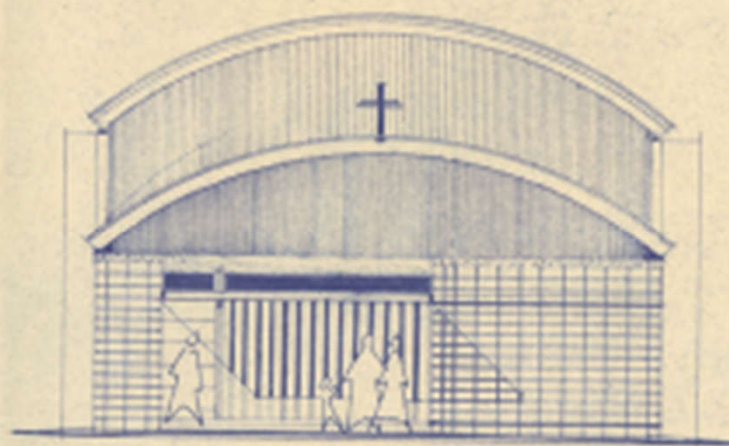
Chiesa provvisoria spontanea in un garage di via san Mamolo,
Bologna, 1957



• Chiesa provvisoria spontanea di Sant'Andrea della Barca,
Bologna, 1957



PROSPETTO 1

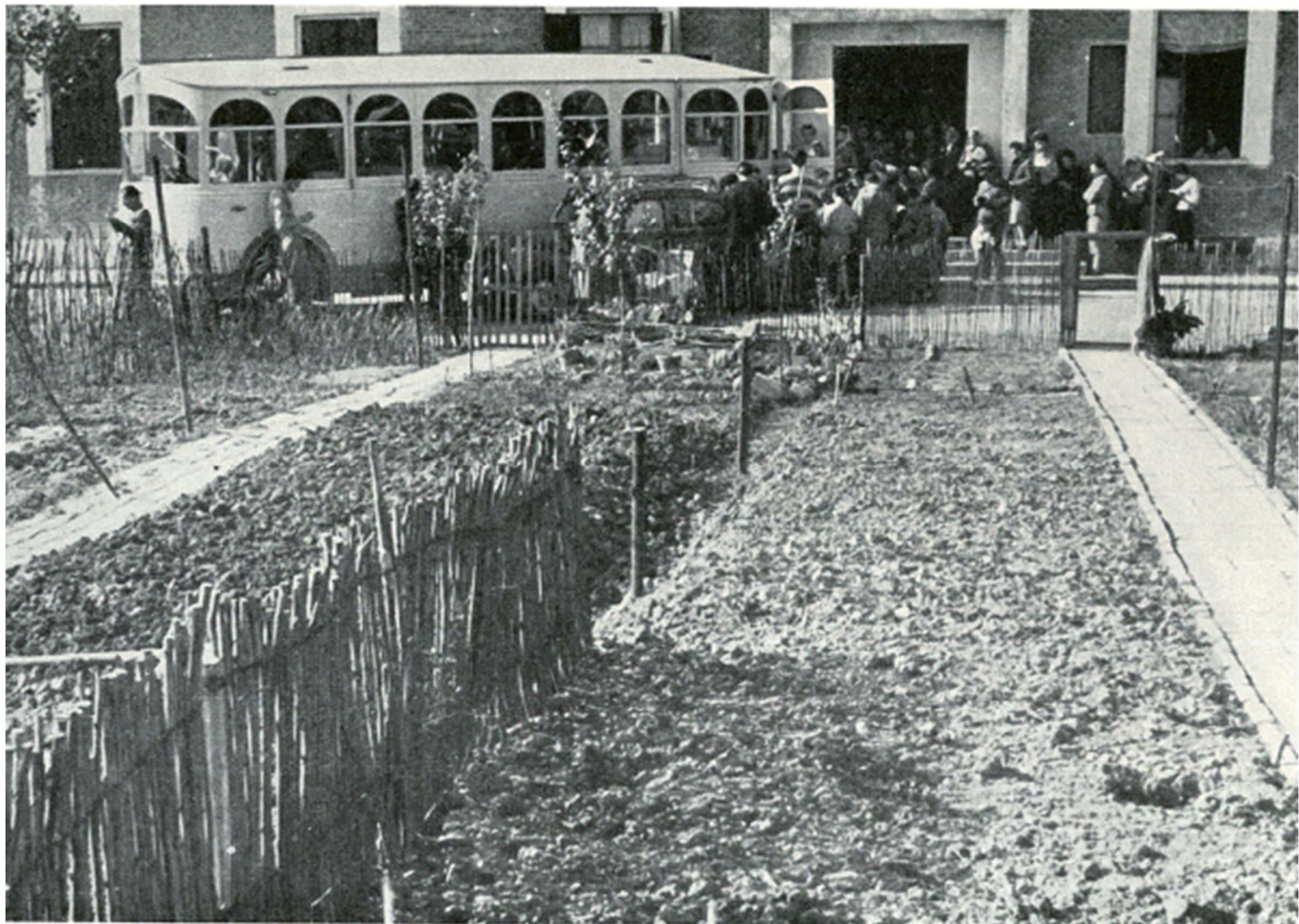


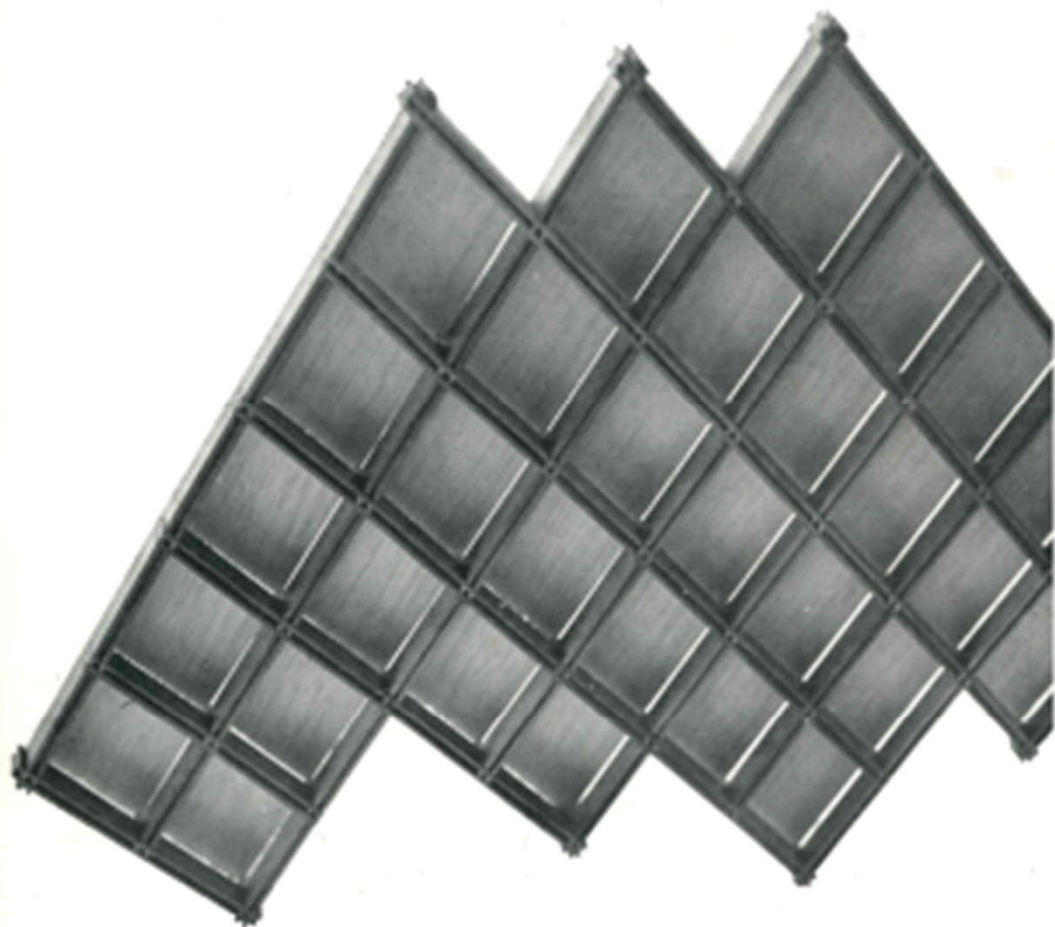
PROSPETTO 2

Gi. Gresleri, San Vincenzo de Paoli, Chiesa Provvisoria, 1956
Da *Chiesa e Quartiere*, 3-4-5, 1956

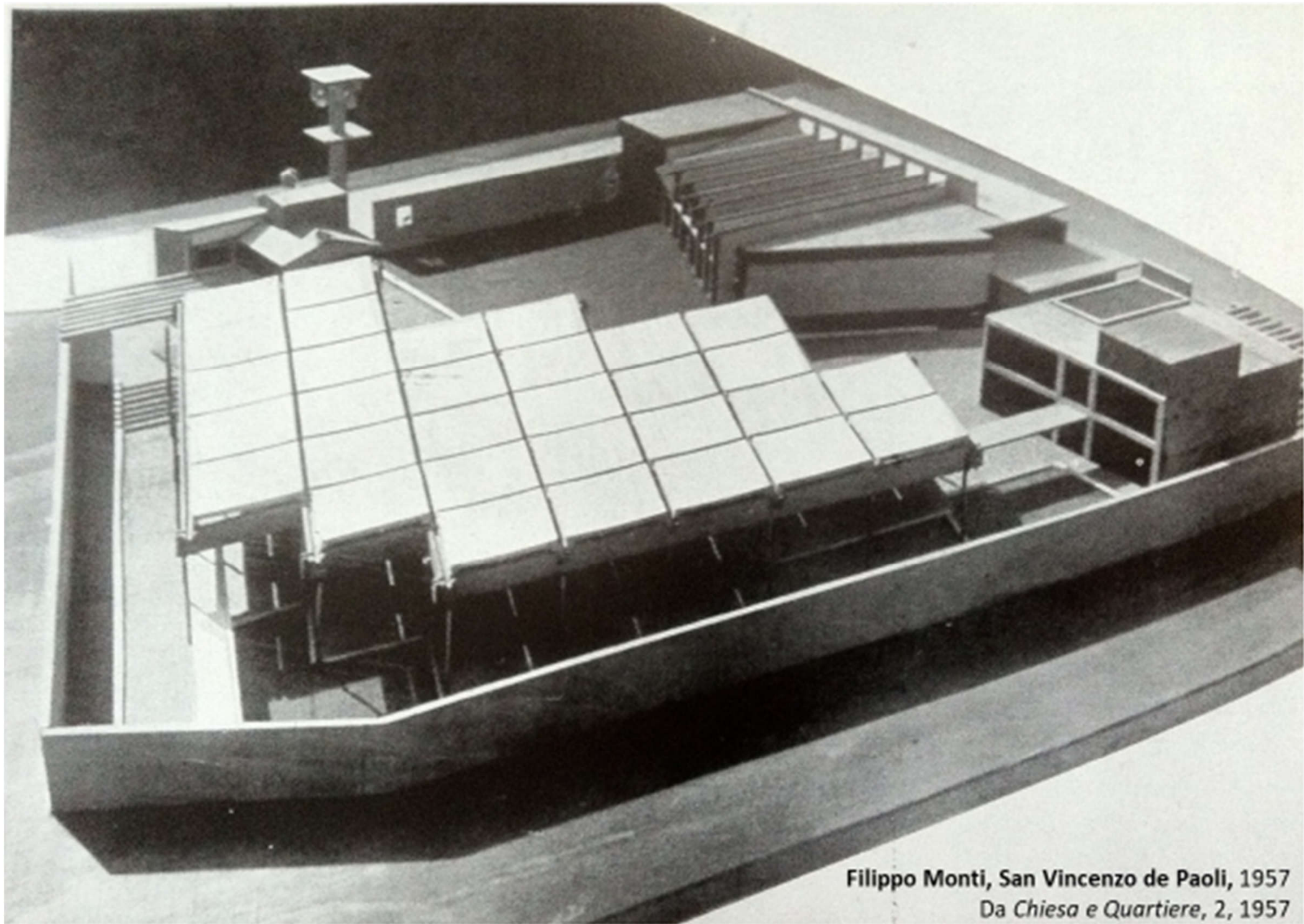


Gi. Gresleri, San Giuseppe lavoratore, Chiesa Provvisoria 1958
Da *Chiesa e Quartiere*, 6, 1958



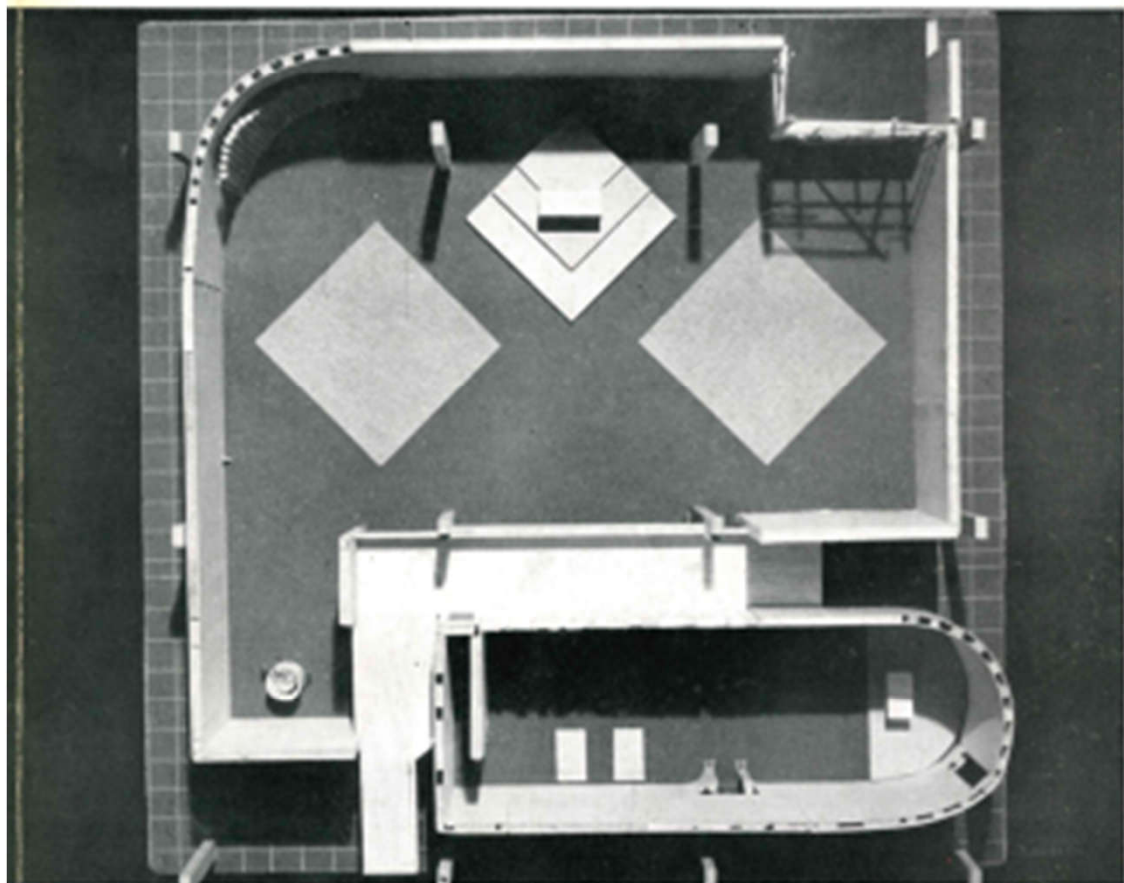
Chiesa e comunità

Chiesa e Quartiere, n. 2, Giugno 1957
Nel 1955, con l'annuncio del Congresso Nazionale sull'Architettura Sacra venne bandito anche il primo concorso per la Chiesa di San Vincenzo de Paoli. Il Progetto vincitore fu quello dell'architetto Filippo Monti.



Filippo Monti, San Vincenzo de Paoli, 1957
Da *Chiesa e Quartiere*, 2, 1957

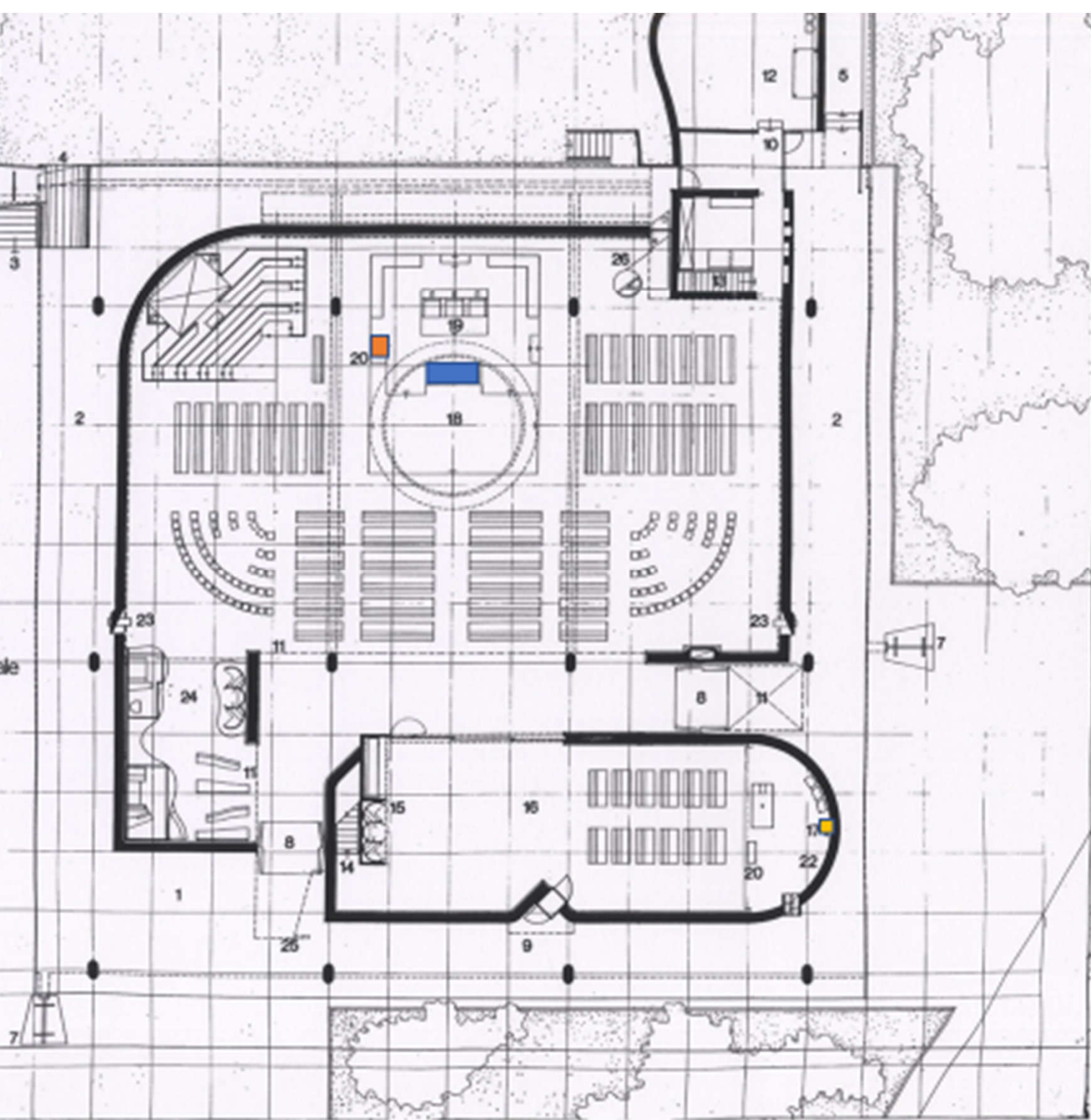
Valori perenni ed espressioni nuove



Chiesa e Quartiere, n3, settembre 1957
In copertina: Chiesa della B. V. Immacolata. Veduta
zenitale del plastico aperto. *Glauco Gresleri, Umberto
Daini, Nevio Parmeggiani architetti*

BVI**PIANTA DELLA CHIESA**

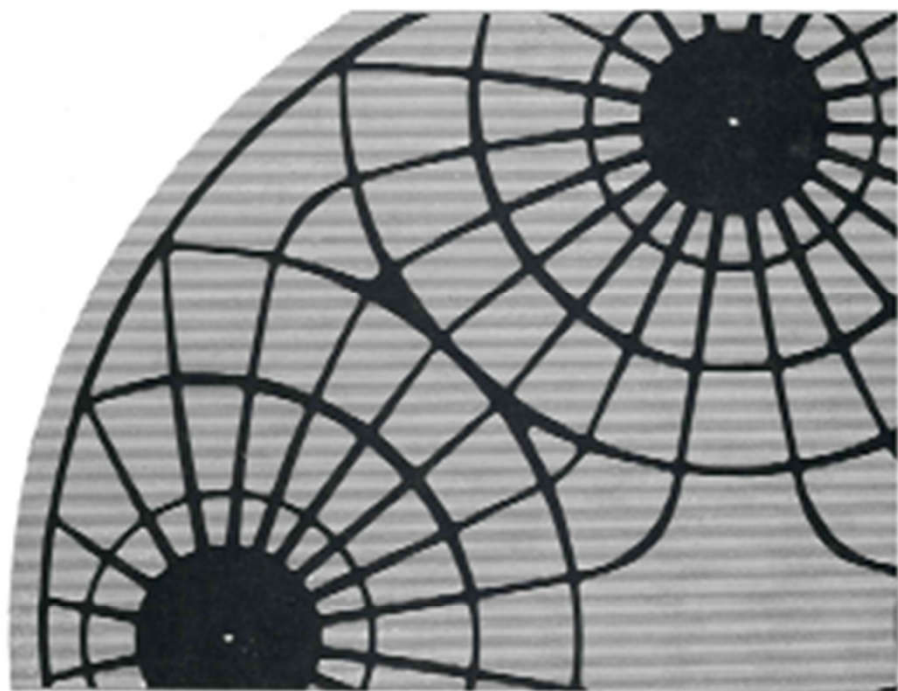
- 1 narthex
- 2 portico
- 3 discesa al sagrato interno
- 4 accesso ai locali di cripta
- 5 passaggio alle opere
- 6 grande fontana
- 7 fontane minori (non realizzate)
- 8 ingressi
- 9 accesso devozionale
- 10 ingresso secondario
- 11 affaccio dal matroneo
- 12 sagrestia
- 13 salita dal deposito arredi
- 14 al matroneo
- 15 confessioni
- 16 cappella del Santissimo e feriale
- 17 conservazione
- 18 presbiterio
- 19 sede
- 20 ambone
- 21 organo e schola
- 22 immagine della Madonna
- 23 luoghi devozionali
- 24 luogo del perdono
- 25 pulpito esterno
- 26 battistero





G. GRESLERI, Beata Vergine Immacolata, arredi provvisori e sperimentali dell'impianto liturgico.

Architettura Religione



Chiesa e Quartiere, n 4, dicembre 1957
In copertina: Cuore Immacolato di Maria, pianta
della Copertura di PierLuigi Nervi per la chiesa
dell'Arch. Vaccaro a Bologna



In alto. Veduta del quartiere INA con l'impianto della nuova chiesa a cantiere in corso, 1955 (da «Chiesa e Quartiere», 20, 1961). In basso. Edificio ultimato verso il 1965.



Conclusions



Carta delle circoscrizioni
parrocchiali bolognesi esistenti
all'inizio del piano.

Le bandierine contrassegnano
le prime aree acquistate per le
nuove sedi parrocchiali.

*(Sezione tecnica Ufficio Nuove
Chiese per Bologna, 1955)*



I ASSUME MONASTERIES
AS PROTOTYPES OF UN-ELECTIVE COMMUNITIES
AT THE ORIGINS OF MODERN EUROPE



John 1, 12-13

... THOSE WHO BELIVED [...]

WHO WERE BORN NOT FROM HUMAN STOCK
OR HUMAN DESIRE
OR HUMAN WILL
BUT FROM GOD HIMSELF



today there are many unelctive communities
we do belong :

ACADEMIC
COMMUNITY


'CONDO
COMMUNITY'

?

MONASTERIES
WHO FOUND A WAY TO MANAGE DIVERSITY
WERE SUCCESSFUL AND SURVIVED.

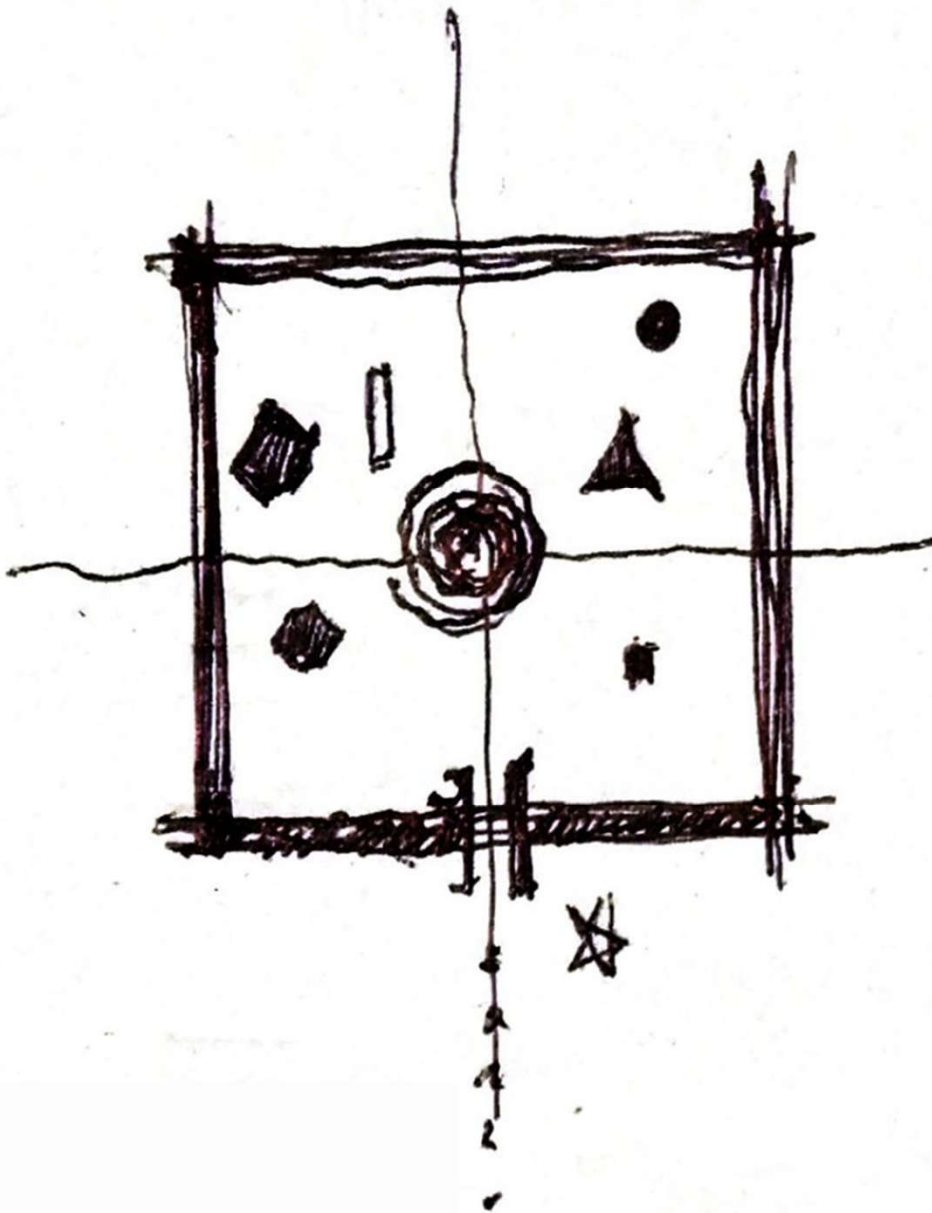
MANAGE
DIVERSITY
MEANT
FINDING
RULES TO
ACT TOGETHER
AS A BODY

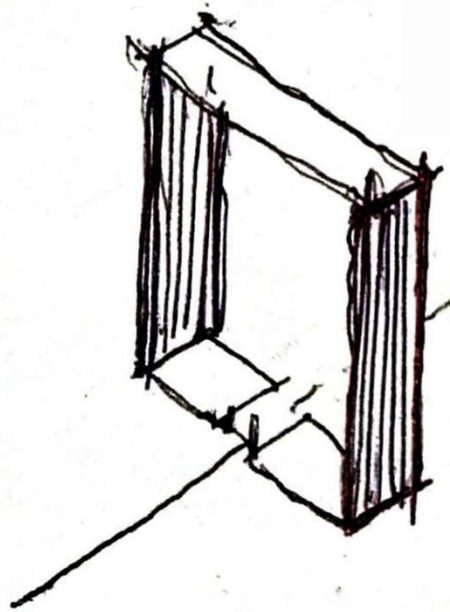
de
PROTO DEMOCRATIC
community



MONASTERIES have
specific/recognizable
boundaries.

sometimes is important
to define our community. It comes
a time when you have to
define who are your ~~my~~ members
where are your boundaries.





HOW AND WHERE
TO DRIVE
THIS
COMMUNITY



the community has to behave
like a single body, like an
only-one person.

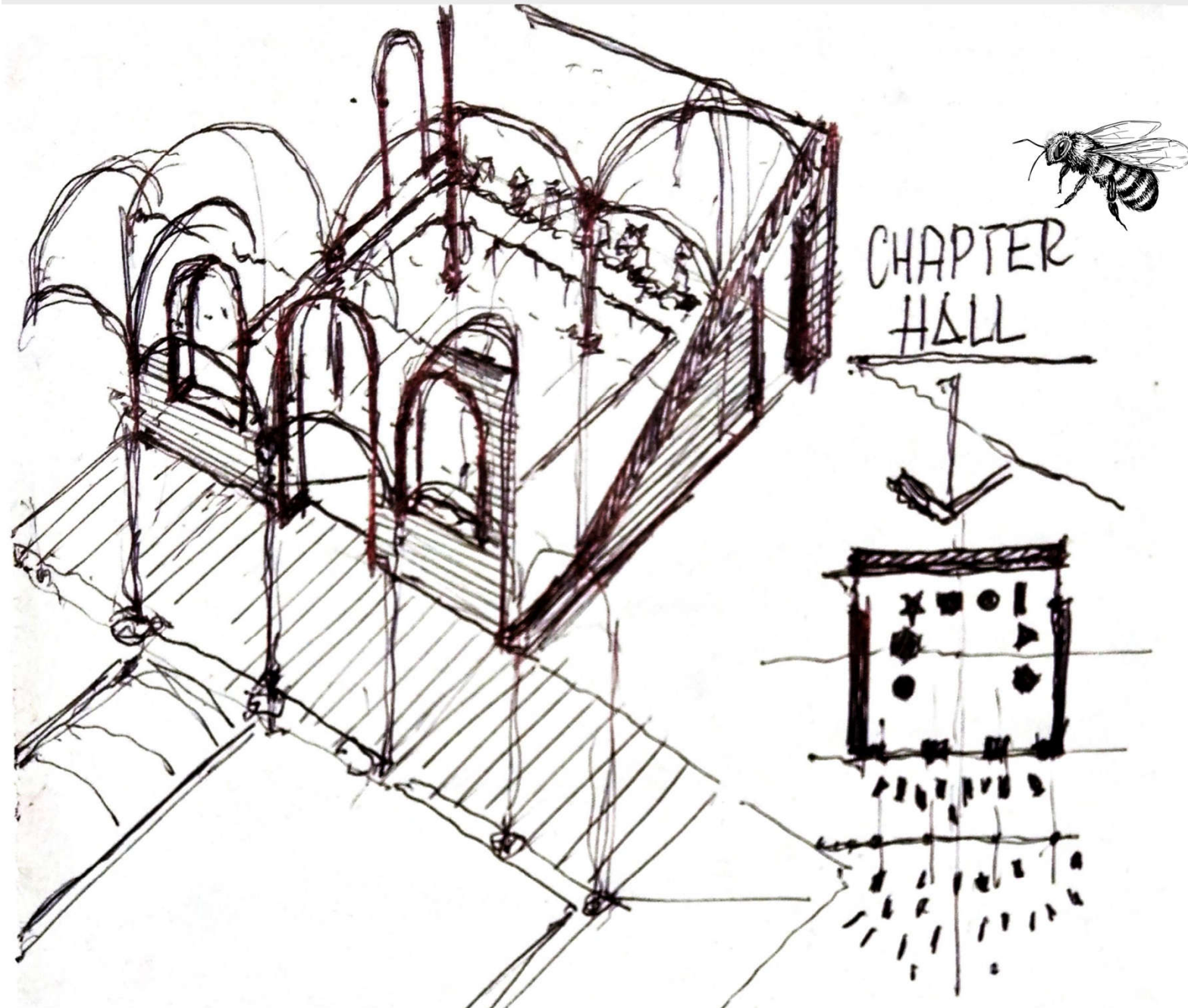


MONASTIC
LITERATURE TAKE INTO ACCOUNT & COMPARISON BETWEEN
~~MONASTIC~~ BEES AND SWARMS



HOW TO BUILD A ULTRA-MAJORITY DEMOCRACY?

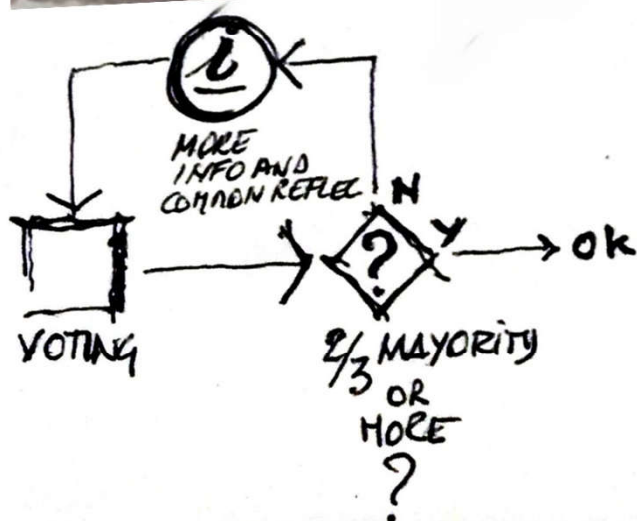




PHASE D



Learning Empowerment Agency Partnership



↓

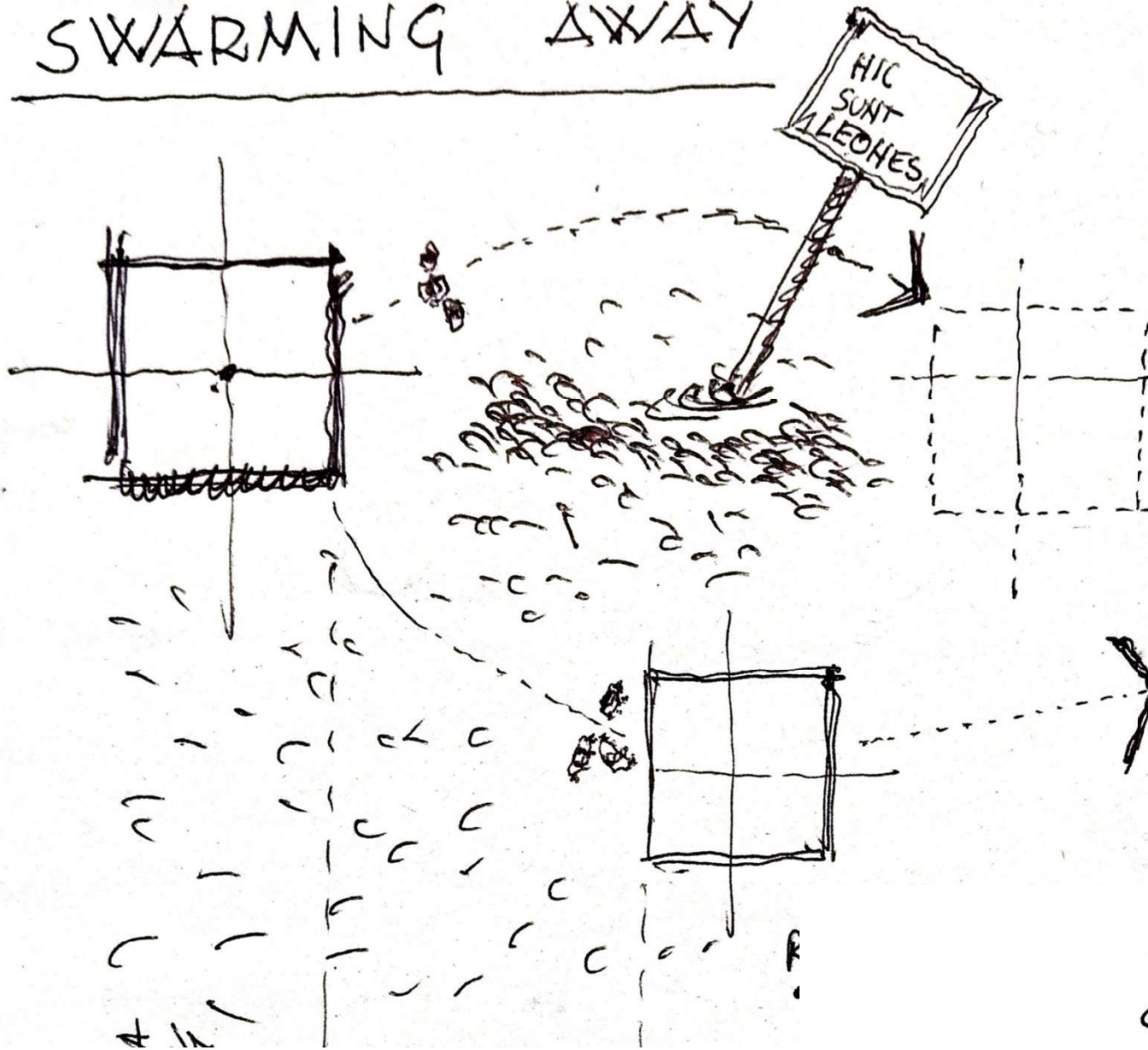
A METHOD

Repeated voting
+ RITUAL

Burn the ballot papers



SWARMING AWAY



Ref. Lc 24, 13

TWO OF THEM WERE ON THEIR WAY TO A VILLAGE CALLED EMMAS, SEVEN MILES FROM JERUSALEM AND THEY WERE TALKING TOGETHER ABOUT ALL THAT HAD HAPPENED, . . .

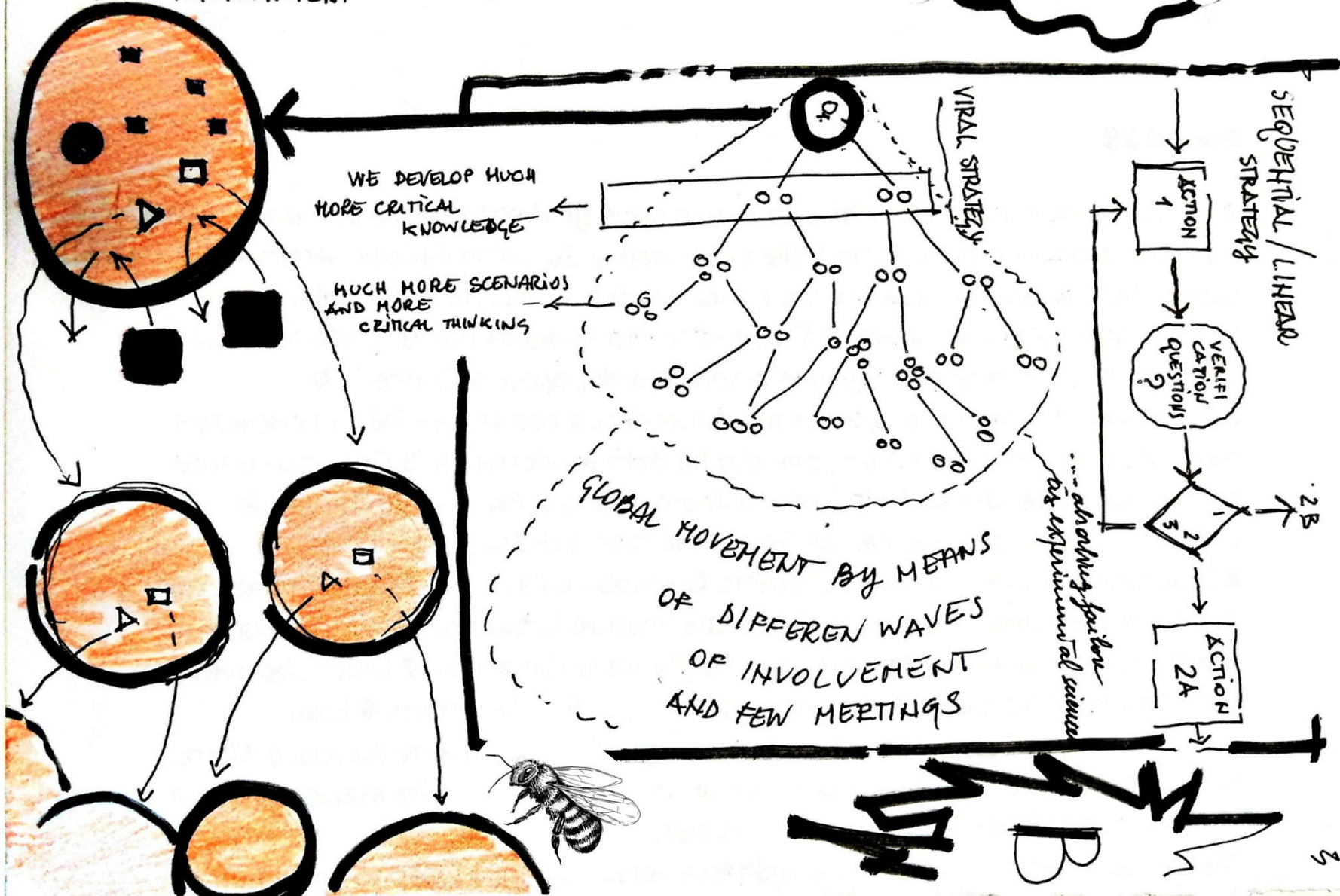
ὁμιλοῦσιν

TOGETHER ROAD STREET

WALKING TOGETHER GENERATES A COMMON GROUND



ABOUT THE COMPOSITION OF A JOYFUL ENVIRONMENT



AGENDA D.1

- Review of phase C - 10 minutes
- Theory - 50 minutes
- **Reflection - 20 minutes**
- Assignment - 10 minutes

And now a short
time for
questions...

Thanks





AGENDA D.1

- Review of phase C - 10 minutes
- Theory - 50 minutes
- Reflection - 20 minutes
- **Assignment - 10 minutes**

Prototyping as engagement - Test your design idea with a prototype!



In D.2 you will learn about prototypes, the “physical manifestation of ideas that allows people to test and explore the technical and social feasibility of an idea”. We will also do a mural exercise together in which your team will select one (design) action to test with a community!
You can use this idea to complete your assignment!

CHOOSE THE ACTION / DESIGN TO BE TESTED! (10 min)

Review Step 7 in the Nominal Group Technique Practice. Choose what action / design idea you want to test with a prototype!
First, gather your ideas individually on a post it!
Then, share your own ideas with the group.
Discuss and decide which action or plan you want to test. If necessary, you could also organize a voting session.



I would like to test the following action or design idea with a prototype:

I would like to test the following action or design idea with a prototype:

I would like to test the following action or design idea with a prototype:

I would like to test the following action or design idea with a prototype:

I would like to test the following action or design idea with a prototype:

I would like to test the following action or design idea with a prototype:

FORMULATE THE PURPOSE OF THE PRORTYPE! (5 min)

Now that you have selected the action / design to be tested, it is time to formulate the purpose of the prototype! Each team member should complete a post it about what they would like to know about the action / design selected in the previous exercise. Also state who you would like feedback from and where the testing will take place. Agree on a scenario!

With this prototype I want to understand (WHAT) about the ACTION/DESIGN selected and test it (WHERE) with (WHOM)

With this prototype I want to understand (WHAT) about the ACTION/DESIGN selected and test it (WHERE) with (WHOM)

With this prototype I want to understand (WHAT) about the ACTION/DESIGN selected and test it (WHERE) with (WHOM)

With this prototype I want to understand (WHAT) about the ACTION/DESIGN selected and test it (WHERE) with (WHOM)

With this prototype I want to understand (WHAT) about the ACTION/DESIGN selected and test it (WHERE) with (WHOM)

With this prototype I want to understand (WHAT) about the ACTION/DESIGN selected and test it (WHERE) with (WHOM)

DESIGN YOUR PROTOTYPE! (15 min)

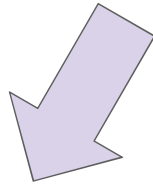
What kind of prototype will help answer your question? (prototype + interview, prototype + observation, etc.) Think with the group about the material of the prototype, the interaction it has with the target group, and at what event you use your prototype? Visualize your ideas with icons, images found on the web, arrows here!
Show the visualization in the plenary!

Prototyping as engagement - Test your design idea with a prototype!



Your task is to create and test a prototype with the target group of your choice at an event of your choice! Gather people's feedback during testing and incorporate it into the design process. You have two options for doing your assignment:

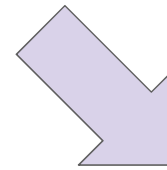
Option A



If you had prototype testing with your community, report what it was like!

use **ppt**
template for
D.3 sharing

Option B



If you haven't had prototype testing with your community, get ready for it through a role play!

use **mural**
template for
D.3 sharing



To sum up - How to proceed with this assignment?

Step 1 - during D.2 session you will develop your research question within your group and build the first version of your prototype.

Step 2 - during D.3 introduce your prototype to the others. You have two alternatives to select from:

A) you had the chance to test it with your community. In this case you introduce the results of the testing. Simply follow the instruction of the ppt template.

https://docs.google.com/presentation/d/1MvYL8-sQtNCnYdN-pniMTNmG3JYFr3c0TifM1M3h9Wg/edit#slide=id.gd7b33e2427_0_0

OR

B) you had no chance to test it with the community. In this case, follow the description in mural and prepare a role playing game in which your audience plays the role of your selected community. Test your idea and collect feedback.

<https://app.mural.co/t/kulturaktiv6589/m/kulturaktiv6589/1654601277632/87495805fd248c27c1378d46e994c5d4e1d0bc74?sender=u4ff30346caf8feb2e24f126>

1

Step 3 - Use the slides or your mural to upload your results to the ledwiki.

Enjoy!



phase D

Collaborative Design, Transformation and Testing

D.1 - Ancient monasteries as possible prototype

Lecturer: Luigi Bartolomei, Francesco Lipparini

D.2 - prototype as community engagement

build your prototype

Lecturer: Anna Szilágyi-Nagy

D.3 - sharing / testing prototypes session

it is your turn to lecture us!