

Community Learning for Local Change

our flexible international study programme

.....now including *community innovation labs*



**Use your skills.
Be a changemaker.**



Co-funded by the
Erasmus+ Programme
of the European Union



DAAD
Higher Education Dialogue
with the Muslim World

What is Community Learning?

A partnership of universities with their local communities fostering **innovation for sustainability**.

The methodological framework is called **participatory action research (PAR)**.

Amongst others, this includes **design thinking, business planning and partnership**.



What is Social Innovation?

applying practical, innovative and sustainable ideas and tools to **benefit society**, especially those who are marginalized, **and the global environment**



Picture: <http://socialentrepreneurs.strikingly.com>

“Social entrepreneurs are the essential corrective force. They are system-changing entrepreneurs. And from deep within them, and therefore their work, are committed to the good of all.”

- Bill Drayton, Founder of Ashoka

What is Social Entrepreneurship?

measuring success not by monetary profit alone, but by the degree of **social impact**



In our programme, social entrepreneurship **can** be an answer to local sustainability challenges. **But not only.** The solution can also be a new cooperation, an organisational innovation or simply a traditional business.

Get involved



Do you want to confront **social and environmental problems** in an entrepreneurial way?

Do you want to learn **how to work with local communities?**

Do you want to **use your skills to design change?**

Get involved



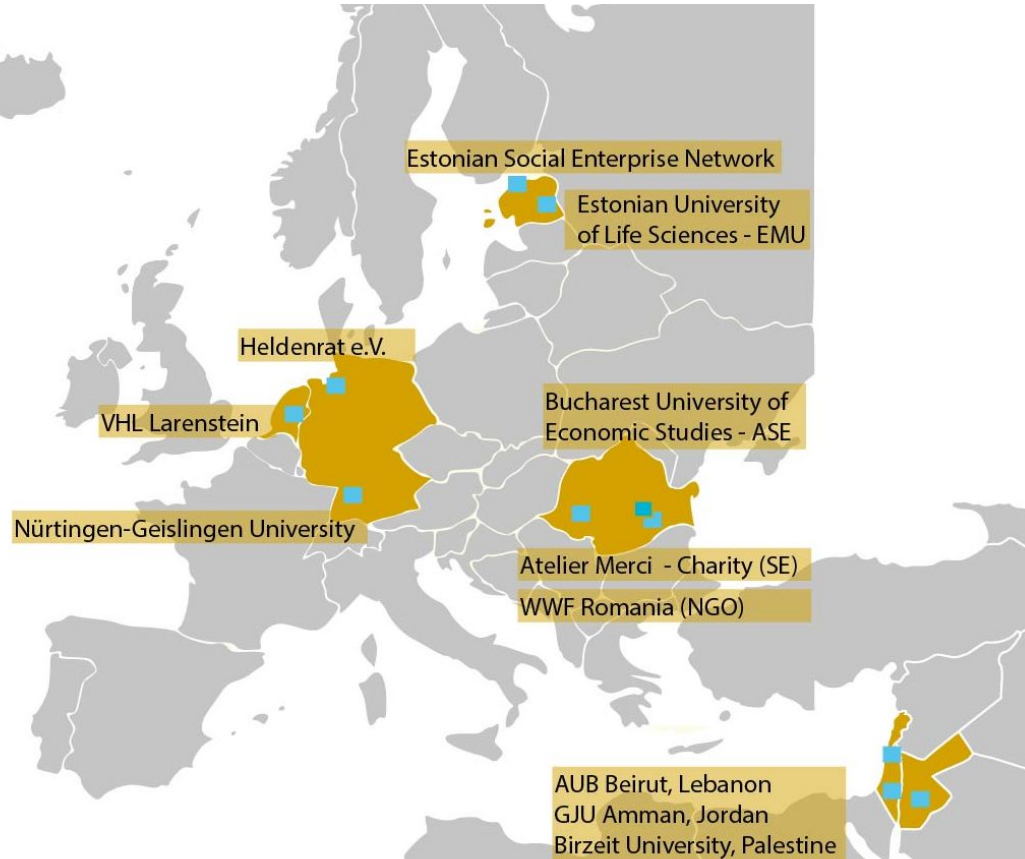
THEN JOIN OUR PROGRAMME!!!

We are looking for students from these areas:

- Business administration
- Economics
- Agronomy
- Urban planning and landscape architecture
- Art therapy

and **ANYONE** who is interested and curious.

Who we are: our project team



+ we cooperate with the DAAD-funded **Middle East Social Innovation Lab (MESIL)**

What we offer

- **12 live sessions on the internet** with international lecturers, successful local community initiatives, social entrepreneurs
- interactive learning with **online teams in tutored sessions**
- **Real-life collaboration** in our **community innovation labs**
- **Interdisciplinary and international group work** with students from Romania, Estonia, Netherlands, other European countries and the world
- If the pandemic situation allows, we might be able to fund you to attend **on site workshops** in Romania, Estonia or Lebanon.
- Core knowledge for **developing your community innovation project:**
 - Identifying communities
 - Setting Goals
 - Designing ideas
 - From idea to implementation

Your benefits

- **Gain hands-on and practical skills** for developing social innovation and social business ideas and involving communities
- **Gain valuable international experience** by working in intercultural teams, practicing your English language skills and applying your knowledge in a virtual context
- **Learn new methods and distinguish your CV** with holistic and much-needed competencies including design thinking, entrepreneurial skills and social responsibility

Designing ideas with your local community



Meet international experts online

Online Seminar Social Entrepreneurship for Local Change (Freigabe) - Adobe Connect

Meeting Layouts Pods Audio

Camera and Voice (5) Stop Local Change Intro March 2019 Draw Stop Sharing



Attendee List (114)

Daan van der Linde (HVHL NL Tutor), Ellen Fetzer

Hosts (1)

Ellen Fetzer

Presenters (7)

- Carmen Paunescu (teacher, ASE)
- Daan van der Linde (HVHL NL Tutor)
- Dirk Funck
- Friedemann Baisch
- Jana Nau

Chat (Everyone)

Lukas van Loenen: who wants max to flex on daans cam?

Arnhem Community Innovation Lab



Arnhem Community Lab

Arnhem CIL Topics:

- Circular Estate Larenstein, Velp
- Event organisation Park Sonsbeek, Arnhem
- Neighbourhood project Worm Hotel Spijkerkwartier Arnhem

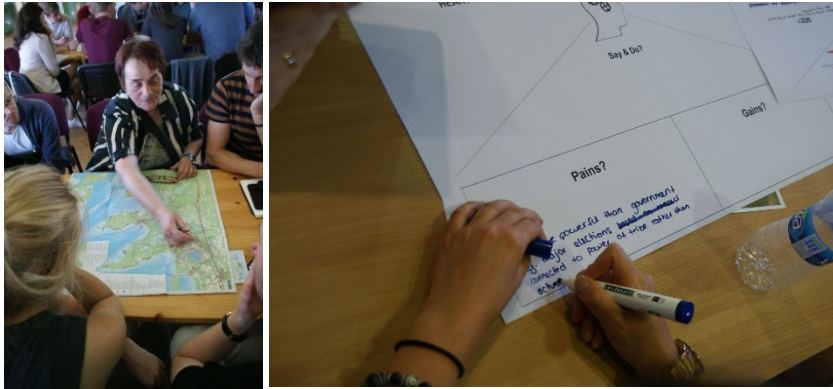
Coordinators: Daan van der Linde, Freddy van Dijken, Charlotte Kasbergen

Strategic Partnership Social Entrepreneurship for Local Change



Everyone Saif Addin Shadeed Dirk Funck Sync

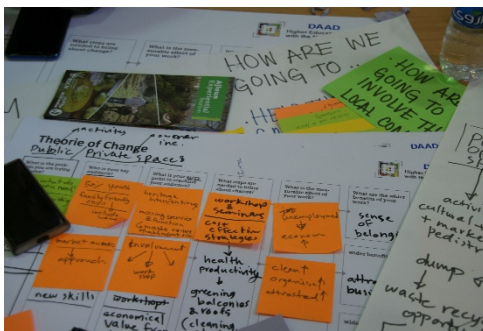
Discover methods you can use in your entire professional life



Roundtable and empathy mapping



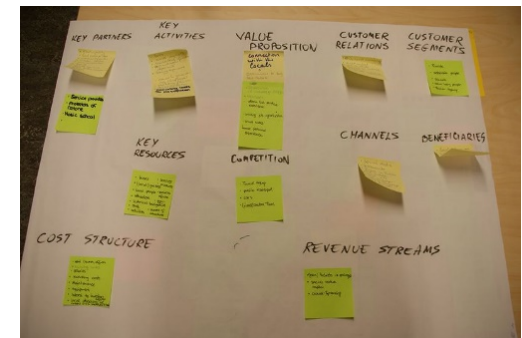
Collective knowledge construction



Theory of Change



Prototyping



Business Model Canvas

Present your ideas with and for the community



...and also to your online partners

The screenshot shows a Zoom meeting interface. The main window displays a presentation slide titled "Groene Rijders / Green Riders" by student Tijs Peters. The slide text includes: "The Green Riders is a CO2 neutral logistic service provider.", "The Social Enterprise distributes goods mainly on (electric) bikes in and out of the City Arnhem.", and "In the suburbs there are distribution hubs where goods are stored and transported (mainly electric) to and from various places." Below the text are two photos of delivery bikes. The Zoom interface shows 8 video thumbnails with names: jop VHL, arati, Marlene..., Ruxandr..., Lidy VHL 2, Boniface, Dirk VHL, and Jamy. The chat window shows messages from jasmine 2 and Jamy. The participant list shows 19 presenters, including arati, Boniface, and Dirk VHL.

Meeting: SELC - Second Presentation - Field Research.pdf

Groene Rijders / Green Riders

Student : Tijs Peters

- The Green Riders is a CO2 neutral logistic service provider.
- The Social Enterprise distributes goods mainly on (electric) bikes in and out of the City Arnhem.
- In the suburbs there are distribution hubs where goods are stored and transported (mainly electric) to and from various places.

Video (8)

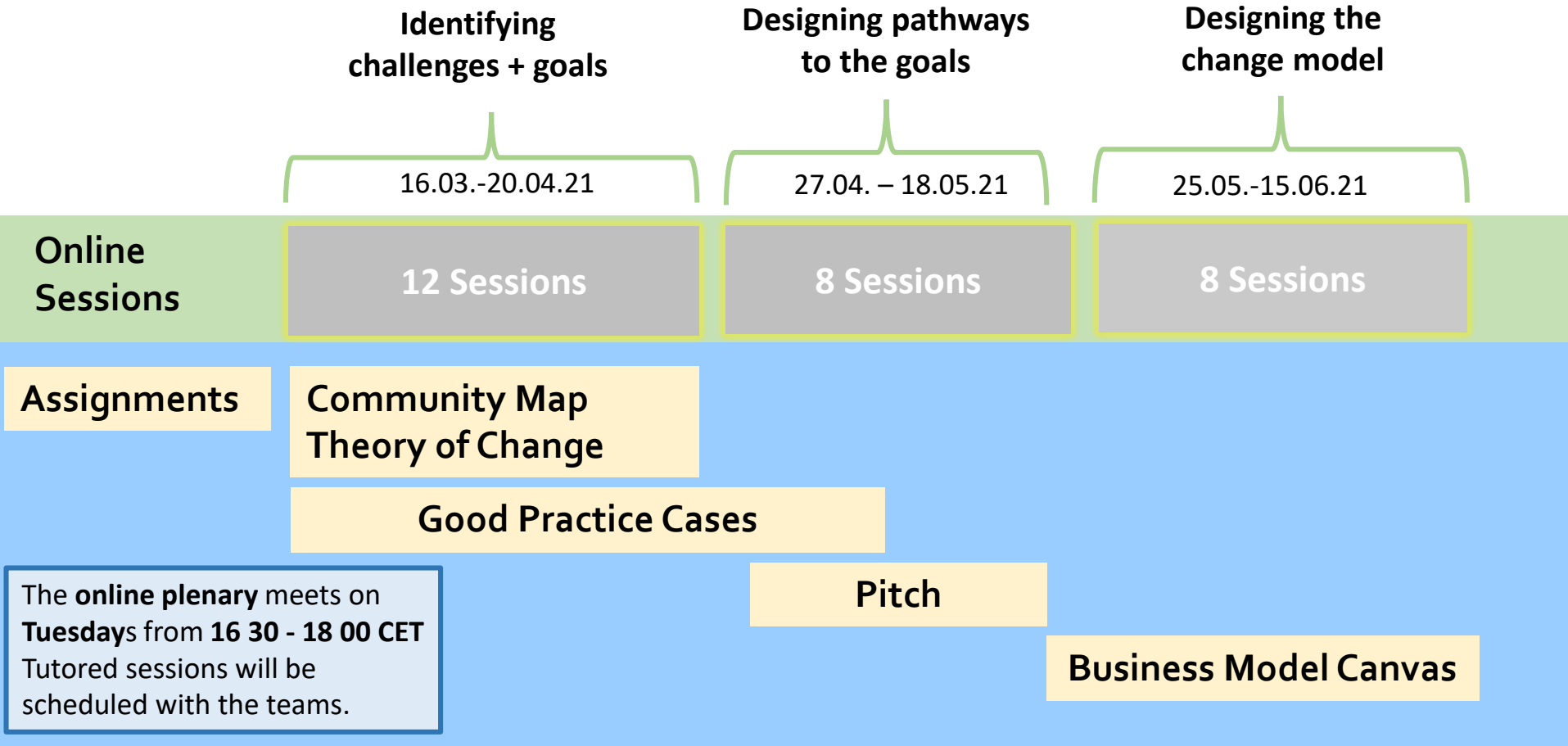
Hinweise 5

Teilnehmer (20)

Chat (Everyone)

Everyone | Marlene Loerz

Seminar Structure Summer 2021



Full CLLC Seminar Programme 2021

March – June 2021

Part 1

Online Seminar
**Community Learning
for Local Change**

Intensive Study Programmes +
Community Innovation Labs

Outcome Part 1: Innovation Idea

October 2021 – January 2022

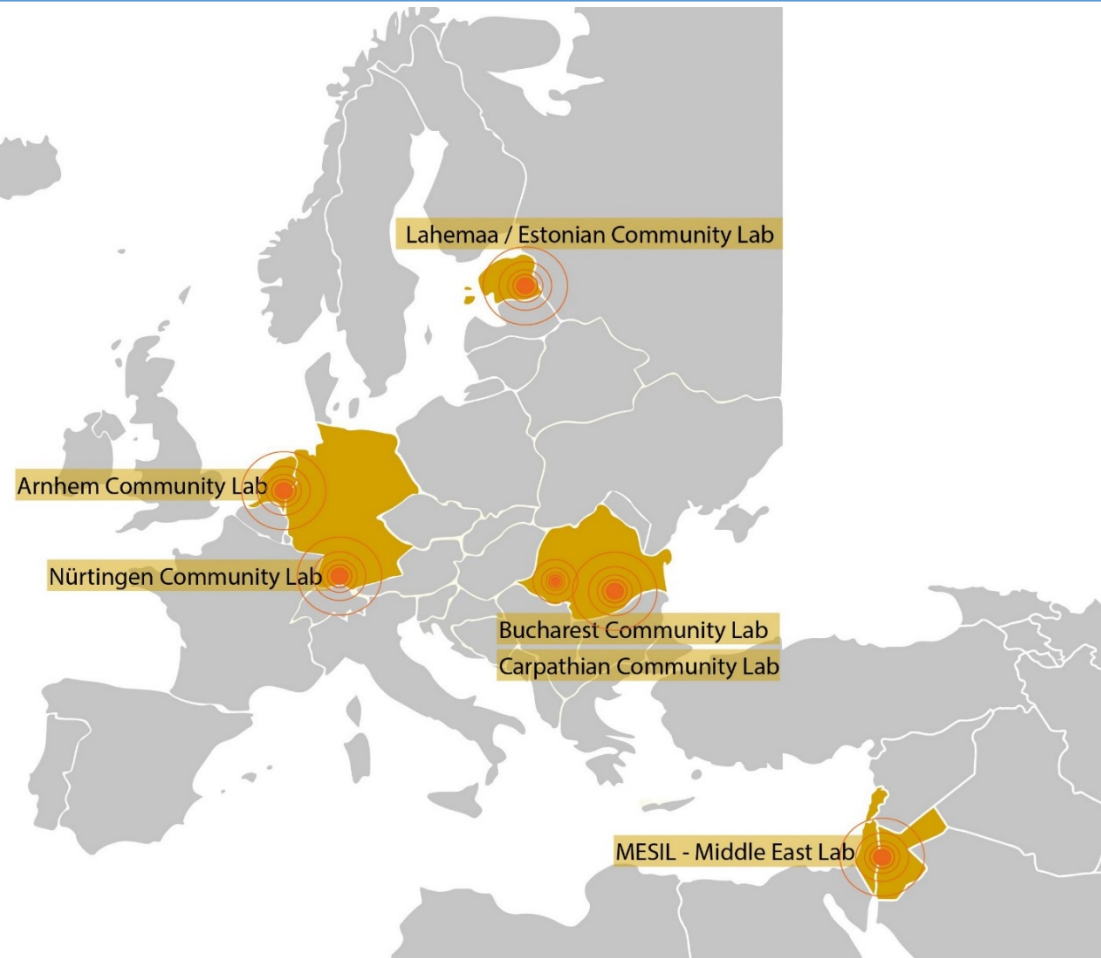
Part 2

Online Seminar
From Idea to Implementation

Working on the Business Plan +
Community Innovation Labs

Outcome Part 2: Business Plan

Community Innovation Labs 2021



Community Innovation Labs 2021

Focus Topics 2021:

Arnhem, Netherlands: sustainable neighbourhoods and circular economy

Lahemaa National Park, Estonia: sustainable and nature tourism, rural entrepreneurship

Nürtingen, Germany: sustainable neighbourhoods, urban nature + edible cities

Bucharest, Romania: waste management, upcycling and circular economy

Bison Hillock, Carpathians, Romania: nature tourism and rural entrepreneurship

Lebanon: disaster recovery in Beirut, neighbourhood development

CIL Activities 2021



Nürtingen Community Innovation Lab (DE)



Local challenges we are going to address:

- Biodiversity meets urban culture: How to secure the **cultural and natural heritage of orchards**
- How to enhance **urban gardening** as a catalyst for **cultural integration**
- **Fair-Trade-Town Nürtingen**: How might we bring this new label to life?



Arnhem Community Innovation Lab (NL)

Local challenges we are going to address:

- Sustainable neighbourhood development in the Spijkerkwartier
- Food forest & Circular Economy for the VHL Campus



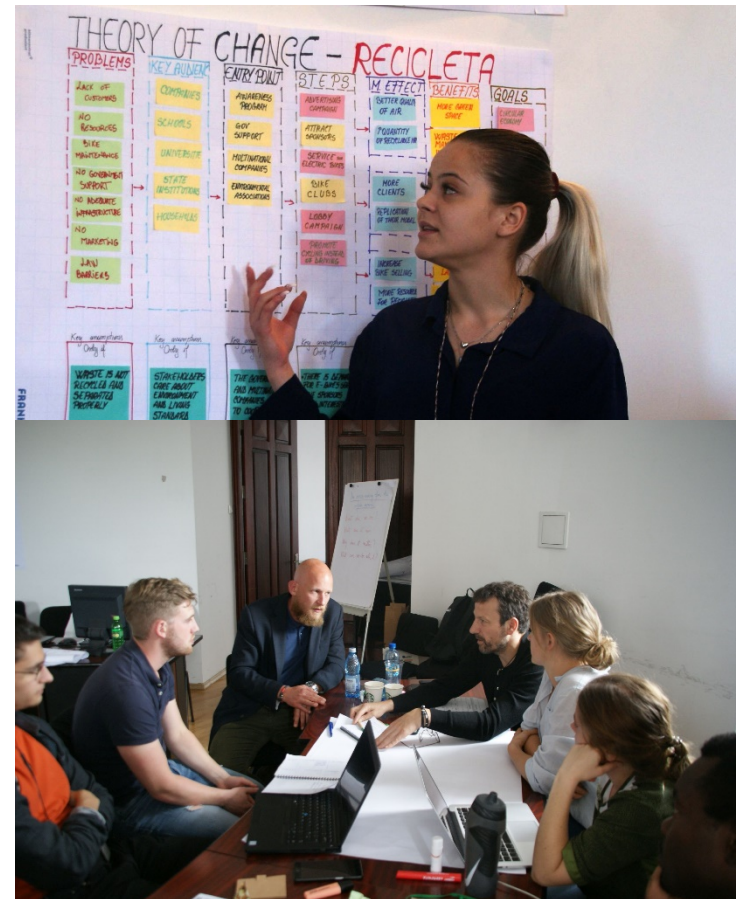
Bucharest Community Innovation Lab (RO)

The Bucharest Lab is linked to the local social entrepreneurship community.

It provides a unique chance for diving into existing business models and to explore social innovation in depth.

Local challenges we are going to address:

- Circular economy
- Sustainable fashion and food
- Waste management



Lahemaa Community Innovation Lab (EE)

Online Lab	embedded in this online course
Workshop	Depending on pandemic situation: maybe in late summer
Hosts	EMU Tartu and SEV Estonia together with the Lahemaa CIL
Location	Lahemaa National Park + EMU Tartu A rural landscape on the Estonian Baltic Sea with a unique local community



Lahemaa Community Innovation Lab (EE)



Local challenges we are going to address:

- Lack of occupational opportunities and high seasonality
- Rural outmigration
- Restrictions on land use
- Lack of collaboration, cooperation and partnerships between state, locals and municipalities
- Local entrepreneurs lack a number of skills: online marketing, social media content creation, guiding, law, making their services suitable for different target groups etc.

Bison Hillock Community Innovation Lab (RO)

Online Lab	embedded in this online course
Workshop	Depending on pandemic situation: maybe in late summer
Hosts	ASE Bucharest + WWF Romania together with the Armenis people
Location	Pilot site Bison Hillock - Armenis, Romania Largest European wilderness stronghold, WWF priority landscape and keystone species rewilding site



Bison Hillock Community Innovation Lab (RO)



Context and focus

Context Largest European wilderness stronghold in the Carpathian Mountains

Environment Nature tourism, sustainable landscape management, innovative local products and services

Community The local community of the Armenis village and vicinity, local stakeholders

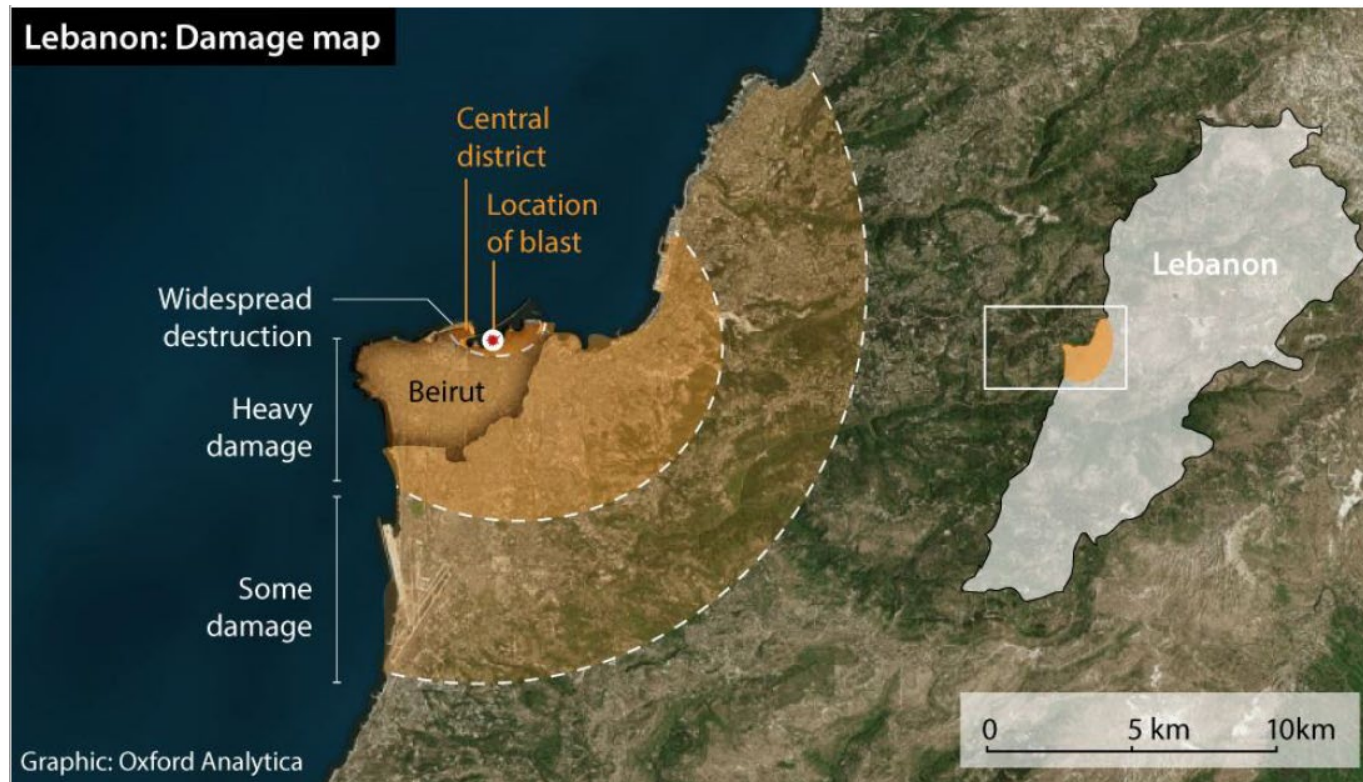
Goals Aligning nature and local development interests at landscape level, healthy ecosystems powered by socio-economic wellbeing

Relevance Addressing challenges the villagers face through co-design with the local community

Post-disaster recovery in Beirut - Lebanon

Community Lab: embedded in this online course

Coordinator: American University of Beirut, Lebanon



Post-disaster recovery in Beirut - Lebanon



Lab researchers survey a resident of Mar Mikhael (Photo: Ribal Amaneddine)

Context Beirut downtown neighbourhood

Environment Dense urban fabric of high cultural and social value, now heavily damaged by the harbour explosion in August 2020

Community Residents of the most affected neighbourhood near the Beirut harbour, local NGOs, university groups et al.

Goals Finding new opportunities for post-disaster recovery (housing, social live, local economy), building on the collective experience.

Relevance Addressing challenges through co-design with the local community

Formalities

- Participation in this course is open to students of **any study programme**. The online course is **free of charge**.
- The online course is combined and synchronized with **local workshops in the community innovation labs (CILs)**.
- **Academic recognition** for successful completion will be as follows:
 - 5 ECTS for the online portion + attending CIL workshops
 - Students are responsible for individually seeking academic recognition at their respective universities. Individual agreements might be up to 8 ECTS depending on local curricular context.
- Successful participation in the online portion **might qualify** for receiving a **travel grant** to attend workshops in Estonia or Romania. At the time of this writing, we cannot plan physical mobility due to the COVID-19 restrictions.

Formalities

- There is no limit regarding the number of participants in the online course. **Any interested student** (or graduate, young professional) is invited to attend.
- All participants who **successfully complete** the assignments for the online course will be issued a **certificate** on behalf of all academic institutions involved.
- Also, **passive participation** (i.e. “listen-only”) in the online course is possible, but **no certificate** will be issued for this participation mode.

Registration and deadlines

Our social innovation programme requires online registration.

Registration is collected centrally, even if you also registered internally within your institutional systems.

Application deadline: 15th of March 2021

Registration/application link:

<http://www.localchange.eu>

More Information



Internet <http://www.localchange.eu>
Contact info@localchange.eu
Facebook [facebook.com/SocialEntrepreneurshipforLocalChange](https://www.facebook.com/SocialEntrepreneurshipforLocalChange)