

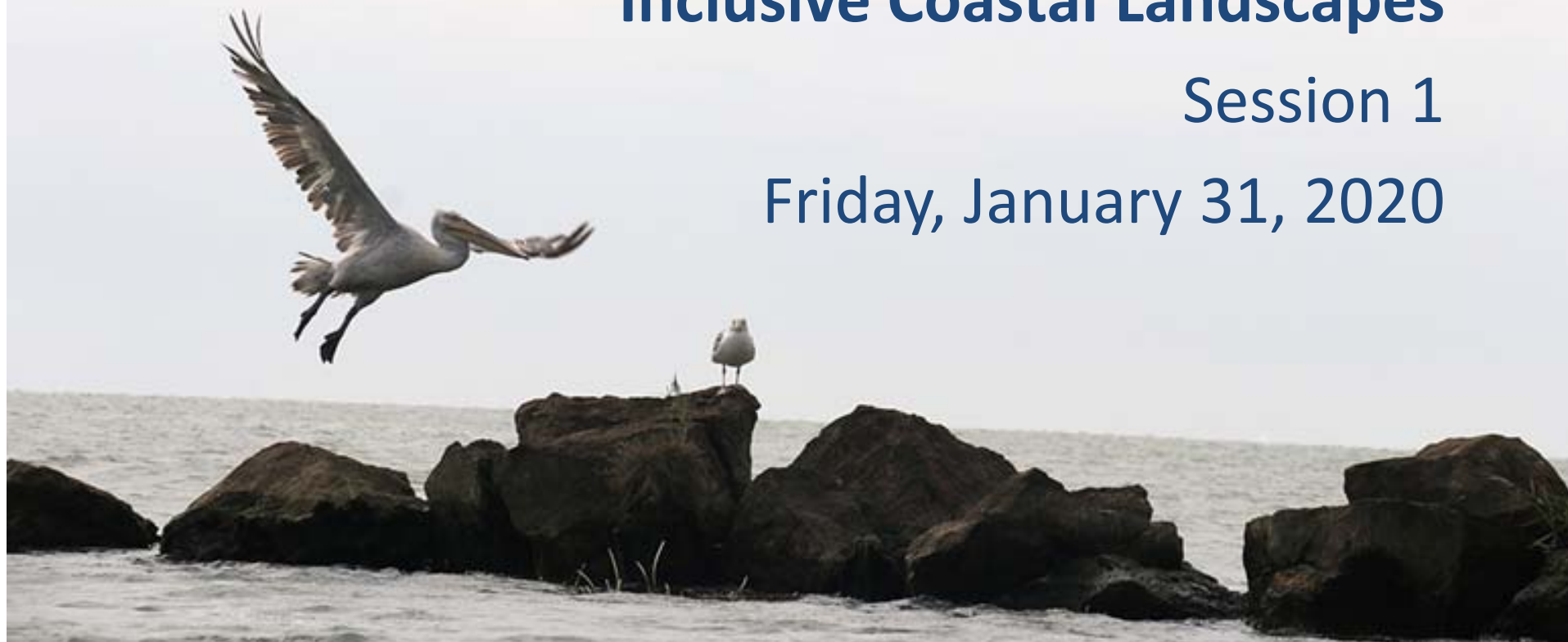


Co-funded by the
Erasmus+ Programme
of the European Union

Inclusive Coastal Landscapes

Session 1

Friday, January 31, 2020



www.emu.ee



LE:NOTRE Institute
Linking landscape education, research and innovative practice





Agenda for Today

- Welcome to the CO-LAND project
- Our global agenda: the UN Sustainable Development Goals
- A voice from UN Habitat: Dr Christine Auclair
- A flashlight on the European Policy Framework
- Seminar sequence and assignments
- Question & Answers
- Introduction to the case study area
- Outlook on the upcoming session

Moderation: Ellen Fetzer (NGU) & Didier Vancutsem (ULB)

Usual session duration is 90 minutes



What is CO-LAND?

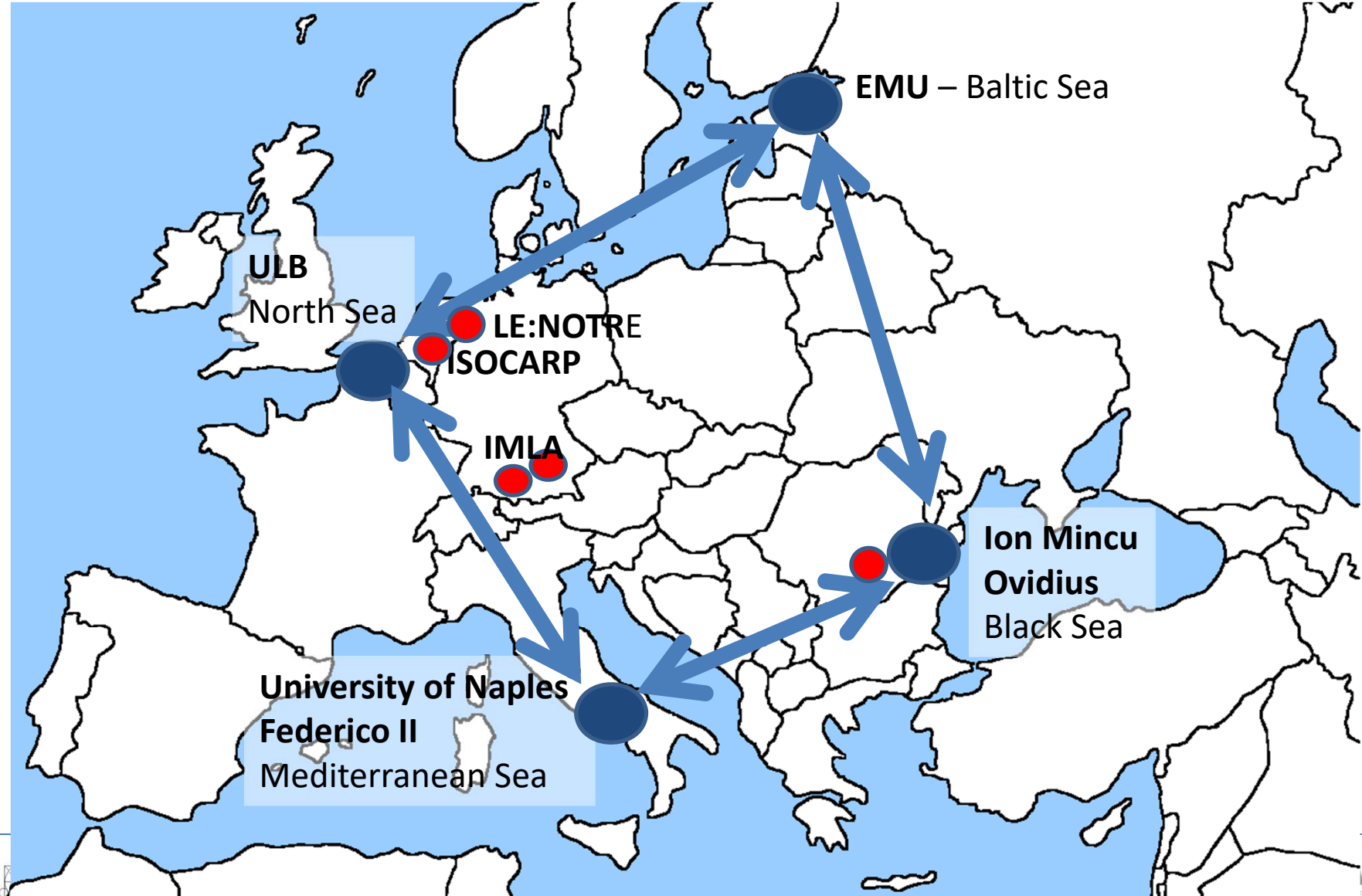
Inclusive **coastal landscapes**:

Activating green and blue infrastructure for sustainable development of the urban-land interface

An ERASMUS+ Strategic Partnership 2017-2020
coordinated by Ion Mincu University for Architecture
and Urbanism in Bucharest.

<http://www.coland.eu>

The CO-LAND Partnership





Your CO-LAND Team



COLAND Team at the second consortium meeting in Estonia, November 2018



Landscapes are site-specific

...but do they also have a global agenda?

>>> *Interactive poll no 1*

17 goals to transform our world



“All countries and all stakeholders, acting in collaborative partnership, will implement this plan.”

Transforming our world: the 2030 Agenda for Sustainable Development, United Nations 2015

Visual Source: UN Communication Material

>>>Interactive polls no 2 + 3



From SDGs to Planning Action



Dr Christine Auclair
Climate Change Planning Officer
at UN-Habitat
*United Nations Human
Settlements Programme*

UN HABITAT
FOR A BETTER URBAN FUTURE



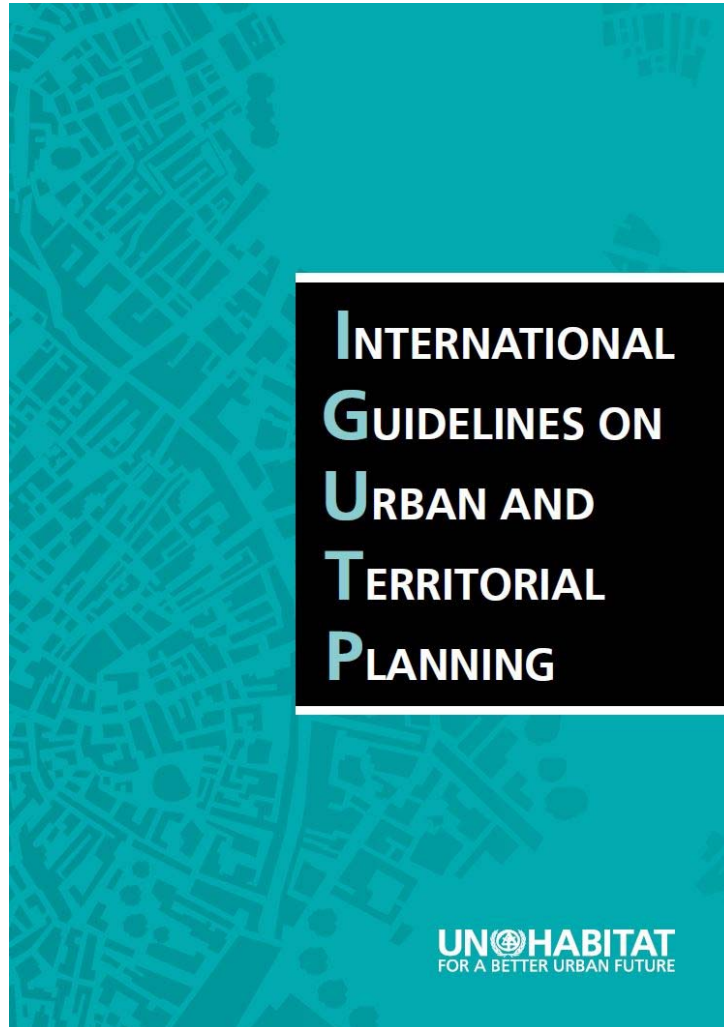
The New Urban Agenda



[New Urban Agenda](#)



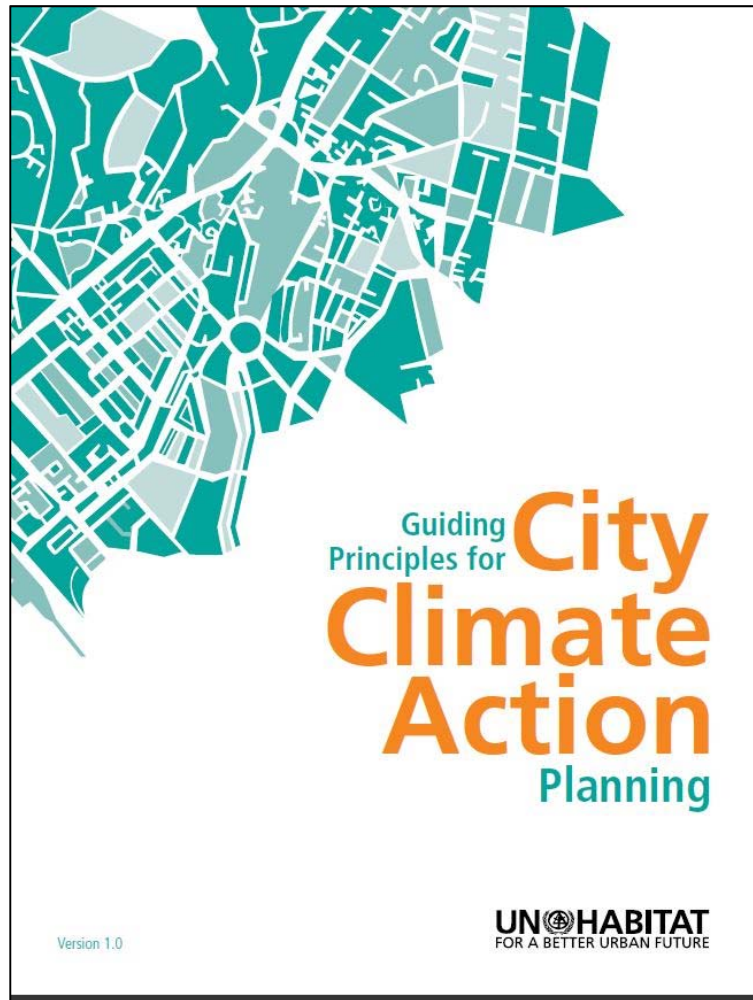
International Guidelines on Urban and Territorial Planning



[International Guidelines for Urban & Territorial Planning](#)



City Climate Action Planning



[Guiding Principles for
City Climate Action Planning](#)



Small interim Q&A on the global agenda



Now what about us?



>>> *Interactive poll no 4*



European Key Documents in a Nutshell

European Landscape Convention
Council of Europe

Water Framework + Floods Directives
DG Environment

Maritime Strategy Framework Directive
DG Environment

↔ **Marine Strategy**
Maritime Spatial Planning

↔ **Strategy for more Growth + Jobs in Coastal + Maritime Tourism**
(DG Maritime Affairs)

Habitats Directive
DG Environment

Green Infrastructure Communication
DG Environment

Landscape

Greening the CAP
DG Agriculture

Regional Development Policy
DG Regio

Coastal Landscapes matter because:



They are valuable living spaces for many.

This is why many land uses are competing for the same space.



View to Rione Terra near Naples, Italy, photo: Ellen Fetzer



Co-funded by the
Erasmus+ Programme
of the European Union



Eesti Maaülikool
Estonian University of Life Sciences

Hochschule für
Wirtschaft und Umwelt
Nürtingen-Geislingen

HOCHSCHULE
WEIHENSTEPHAN-TRIESDORF
UNIVERSITY OF APPLIED SCIENCES



ULB
Faculté
d'Architecture
La Cambre Horta



LE:NOTRE *Institute*
Linking landscape education, research and innovative practice



ISOCARP
Knowledge for Better Cities

Coastal Landscapes matter because:



They are living landscapes under change



Pozzuoli, Italy, photo: Ellen Fetzer

Coastal Landscapes matter because:



They provide economic opportunities and generate values.



Harbour of Constanta, Romania, photo: Ellen Fetzer, 2012

Coastal Landscapes matter because:



They are biodiversity hotspots and dynamic



De Panne beach, photo: Didier Vancutsem

Coastal Landscapes matter, because

They are healthy and support human wellbeing.



Summer guests on the Mangalia beach, photo: Ellen Fetzer 2013



Co-funded by the
Erasmus+ Programme
of the European Union



Eesti Maaülikool
Estonian University of Life Sciences

Hochschule für
Wirtschaft und Umwelt
Nürtingen-Geislingen

HOCHSCHULE
WEIHENSTEPHAN-TRIEDORF
UNIVERSITY OF APPLIED SCIENCES



ULB
Faculté
d'Architecture
La Cambre Horta



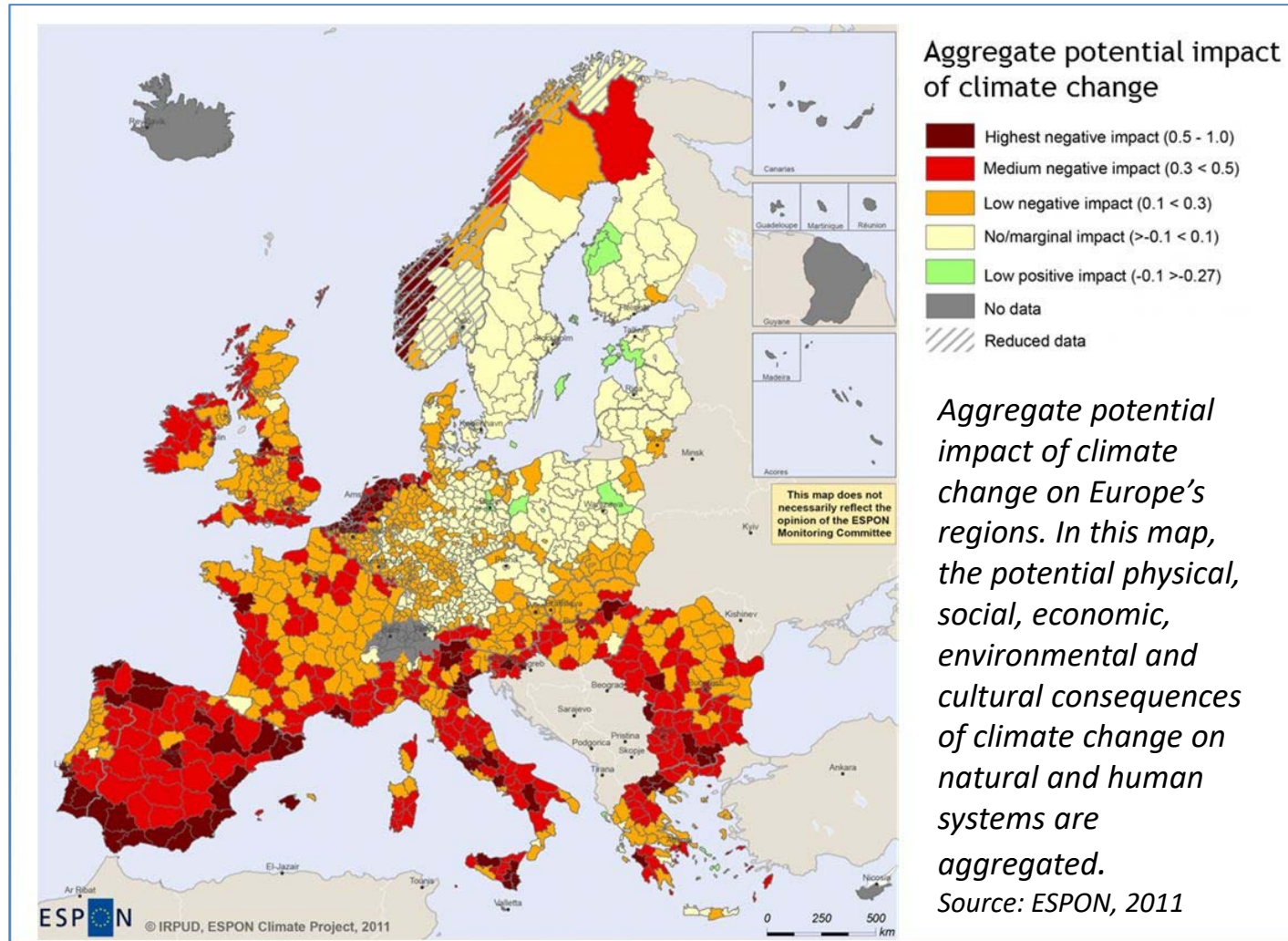
LE:NOTRE *Institute*
Linking landscape education, research and innovative practice



ISOCARP
Knowledge for Better Cities



Coastal Landscapes are at risk

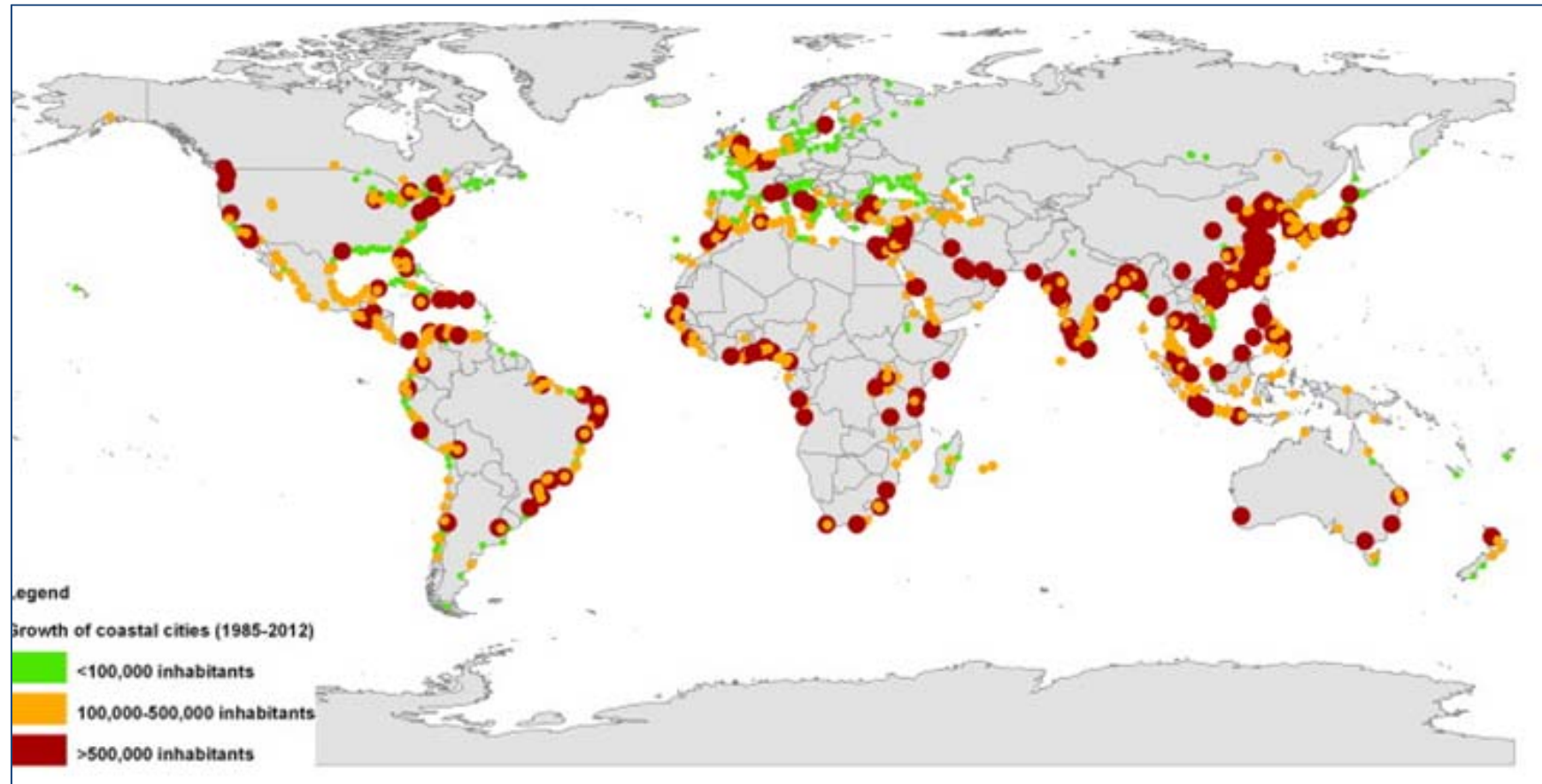




***The world...half of the
population living in cities with
over 100,000 inhabitants are
within 100 km from the coast.***

*Barragan et al, 2015, Analysis and trends of the world's coastal cities
and agglomerations*

Growth of Coastal Cities Agglomerations between 1985 and 2012 worldwide



The increase in urban population is grouped into three ranges: Cities that have grown less than 100,000 inhabitants, cities that have grown between 100,000 and 500,000 and cities that have grown more than 500,000 inhabitants.

Barragan et al, 2015, Analysis and trends of the world's coastal cities and agglomerations

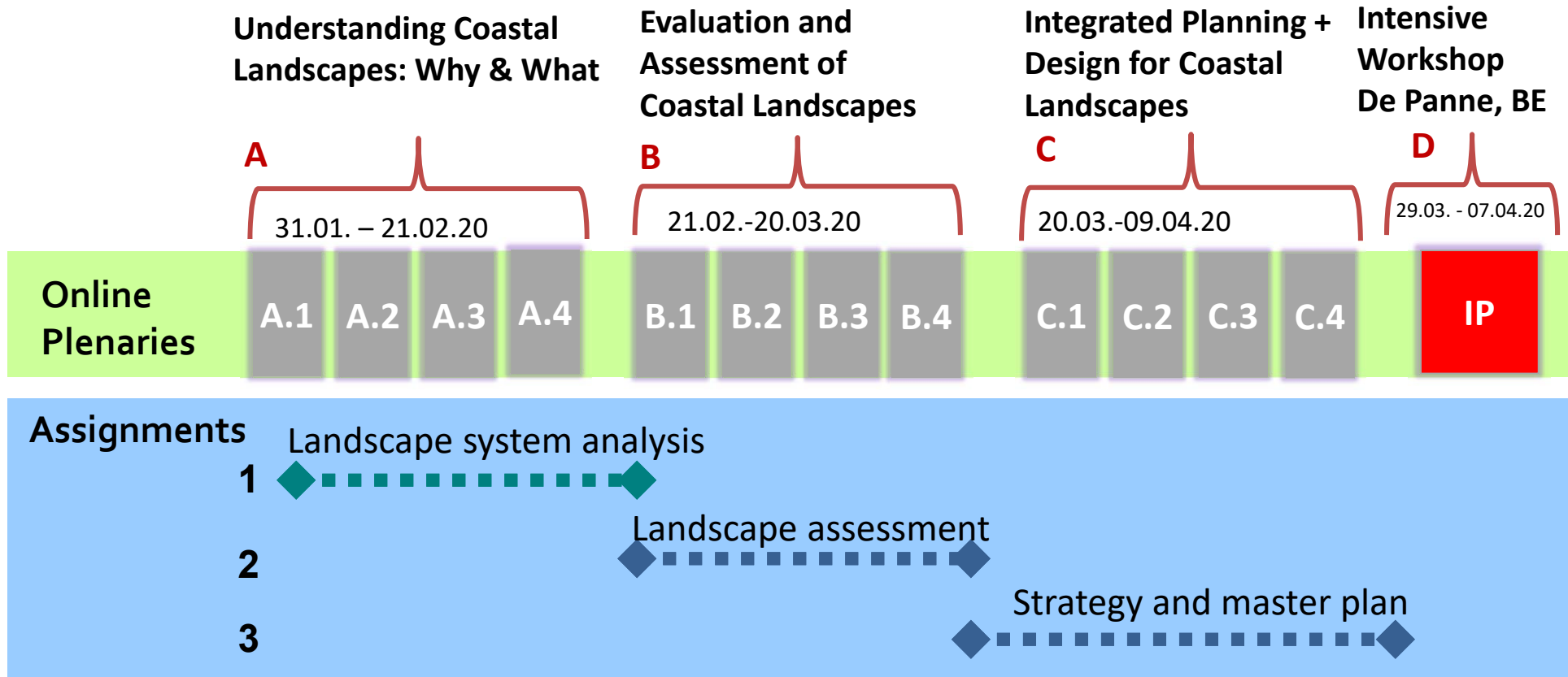


Main CO-LAND Learning Goals

- Understand the **multiple layers** of costal landscapes
- **Assessing** risks and potentials of a multipolar system
- Prioritize and set **goals**
- Translate your goals into a **strategy**
- **Translate** the strategy to the territory
- **Design and visualise** what it means in the landscape
- **Visioning** new partnerships and value streams

→ you are going to do all of this (quick look at the wiki)

Seminar structure 2020



The class meets on Fridays at 15:00 pm CET for 90 minutes

The intensive programme partly covers phase C of the course (strategy + master plan)

DE PANNE Case Study



DE PANNE Case Study - Challenges

Total population 11.000 Inhabitants - Surface 23 km²
Close to the French border - Origins "Duinpan" from dunes
Heritage from WW1
Challenges of rapid urbanisation and natural reserve
How to manage the urban open spaces and keep natural character



DE PANNE Case Study



DE PANNE Case Study - Challenges

Total population 11.000 Inhabitants - Surface 23 km²
Close to the French border - Origins "Duinpan" from dunes
Heritage from WW1
Challenges of rapid urbanisation and natural reserve
How to manage the urban open spaces and keep natural character





Vlaanderen
is omgeving

T.OP Kustzone territorial development program for the coastal region

DEPARTEMENT
OMGEVING



T.OP Kustzone

- ▶ Active since 2016
- ▶ In collaboration with West-Vlaanderen
- ▶ Focus on climate change, water, demography, coastal dynamics
- ▶ urban/build environment – rural landscapes
- ▶ 19 municipalities, Flemish administrations, stakeholders
- ▶ knowledge building
- ▶ Sharing of knowledge
- ▶ Projects towards implementation



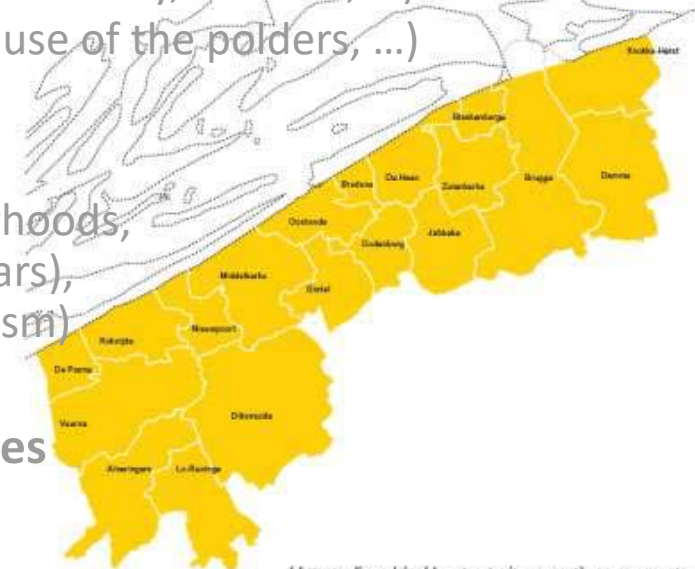
Het studiegebied bestaat uit negentien gemeenten die samen de Vlaamse kustregio vormen.

T.OP Kustzone

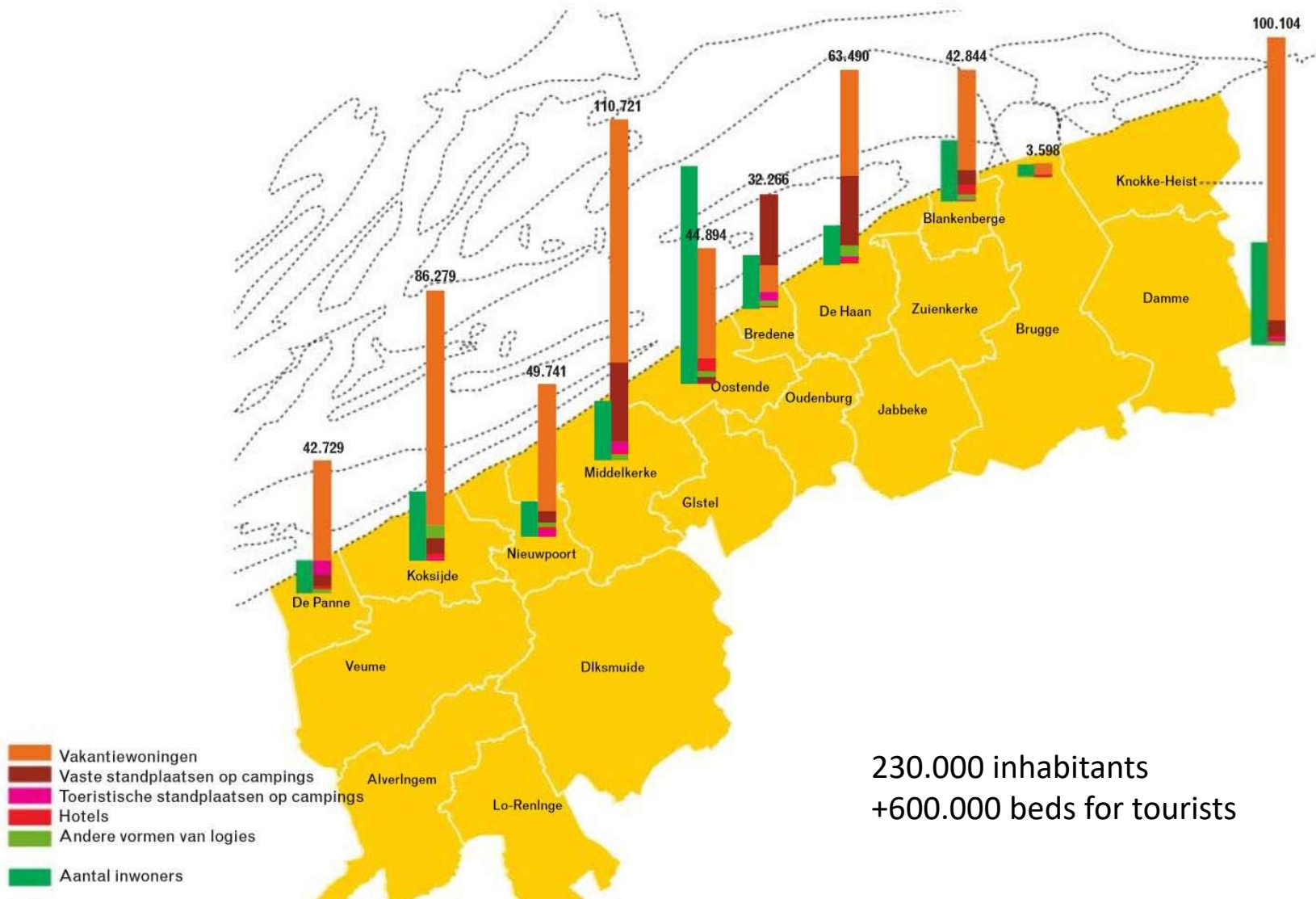
- ▶ **Goal:** implementation of long term strategies into local projects
- ▶ **Long term strategies: regional scale (Flanders / West-Flanders)**
 - No more greenfield developments
 - Accommodate the increase of households in the existing build environment (more compact cities and villages)
 - Deal with an elderly population (care, mobility, services, ...)
 - Adaptation to climate change (water, use of the polders, ...)
- ▶ **Local projects:**
 - Local challenges: outdated neighbourhoods, a decrease of young people (20-50years), housing market under pressure (tourism)
- ▶ **How can regional and local challenges be combined?**



Vlaanderen
is omgeving





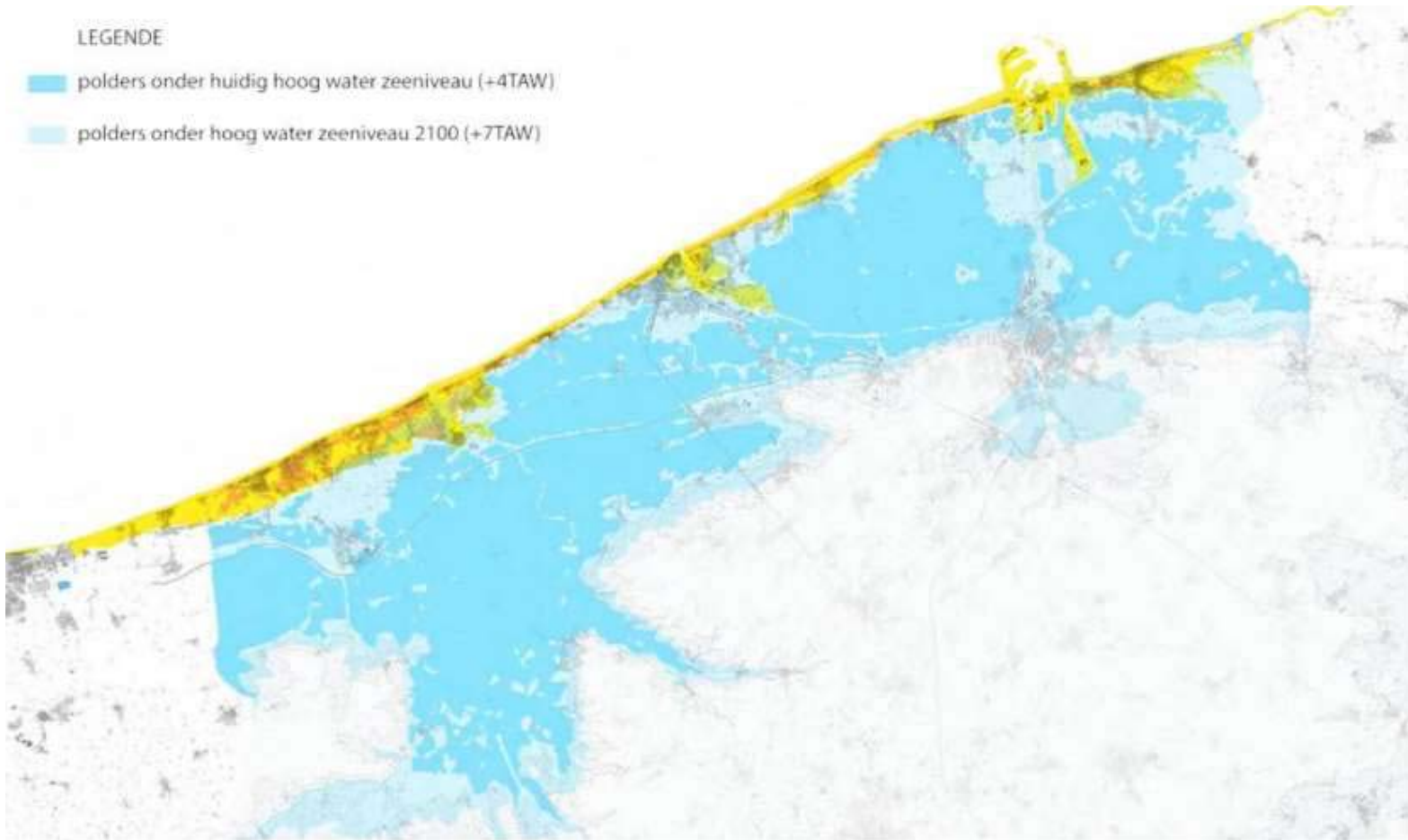
Het studiegebied bestaat uit negentien gemeenten die samen de Vlaamse kustregio vormen.



230.000 inhabitants
+600.000 beds for tourists

LEGENDE

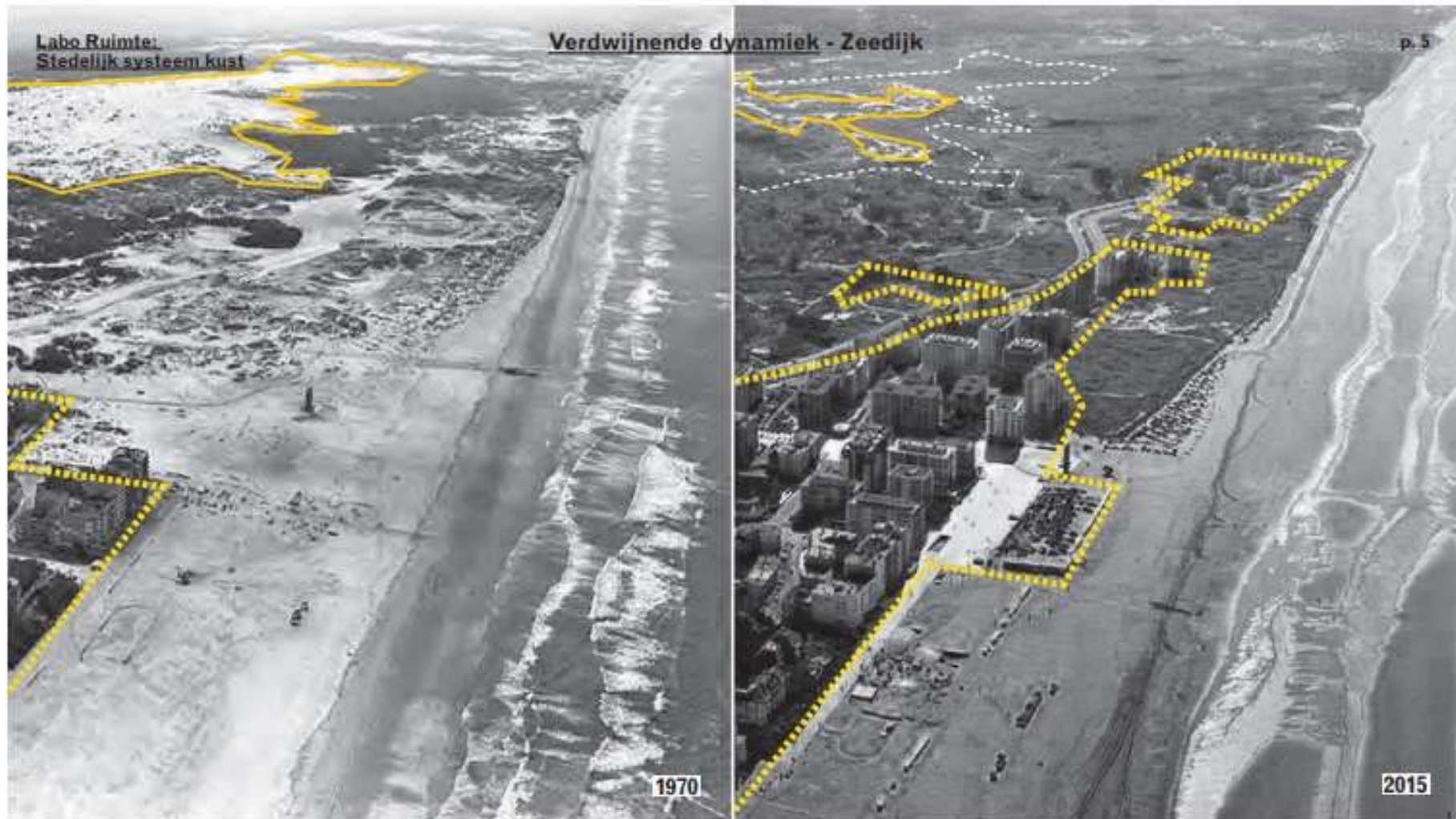
-  polders onder huidig hoog water zeeniveau (+4TAW)
-  polders onder hoog water zeeniveau 2100 (+7TAW)



Gebieden die kampen met wateroverlast en overstromingsrisico. Bron: Metropolaan Kustlandschap rapport fase 3 deel 2

Challenges around De Panne

- ▶ How to restore the natural landscape of dunes / how to connect the different parts / can we restore the typical consecutive parts from the beach, across the dunes and up to the polders
- ▶ Can the village be reconnected to its history / its origin and reclaim its link with the landscape?
- ▶ What can be the future of the polders near De Panne?
- ▶ Can we efface the border (geographically) and strengthen or consolidate both landscapes into one giant landscape of dunes and little villages between Dunkerque and De Panne?





**Labo Ruimte:
Stedelijk systeem kust**

Potentials and actions



Maintain and protect the rich but weakened kwelzone between dunes and polders

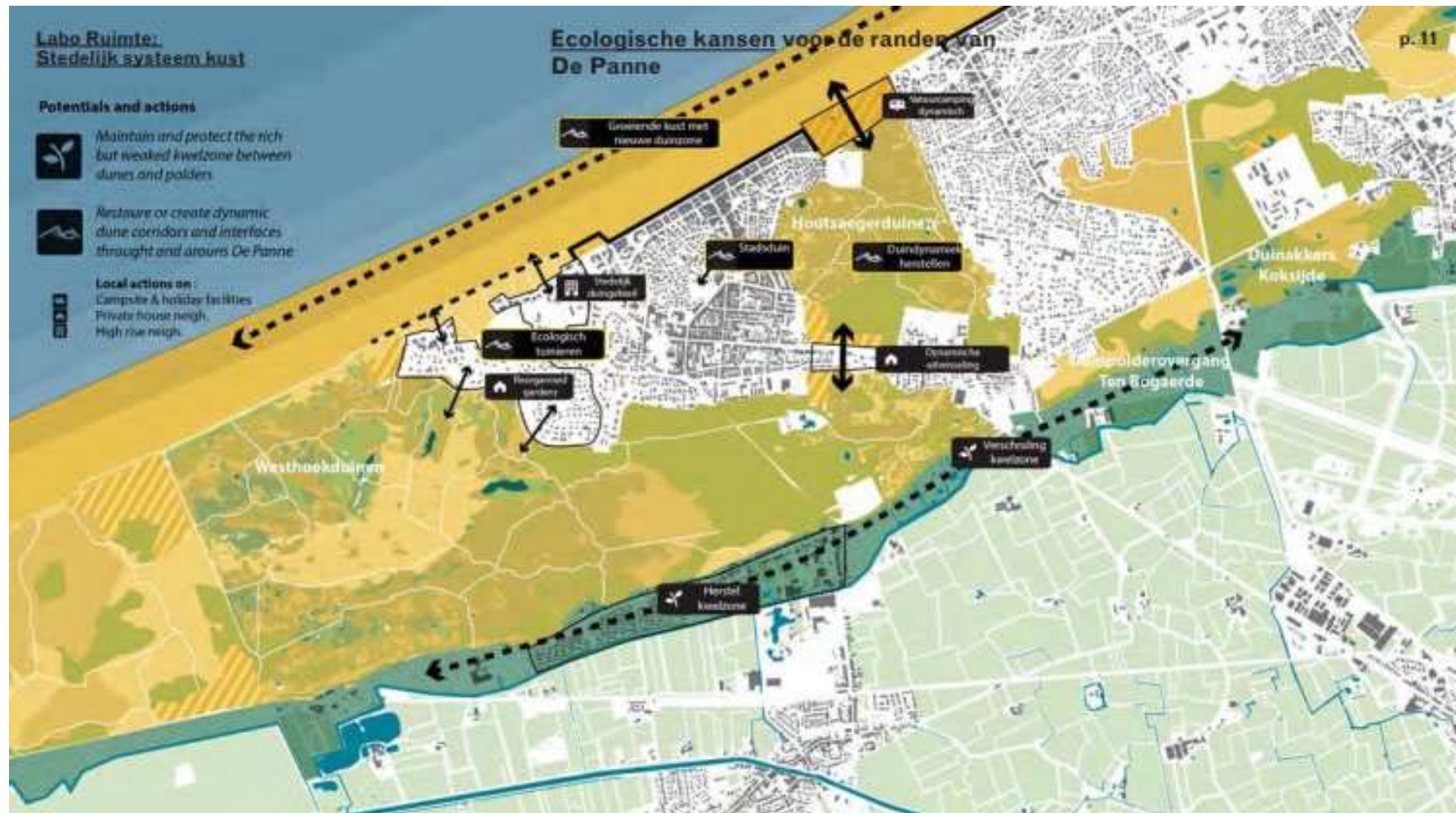


Restore or create dynamic dune corridors and interfaces through and around De Panne



Local actions on:
Campsite & holiday facilities
Private house neigh.
High rise neigh.

**Ecologische kansen voor de randen van
De Panne**



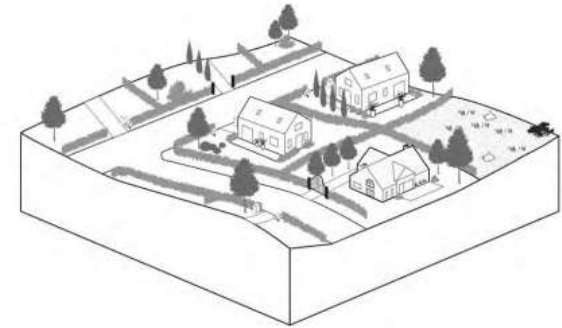


Kustverdediging - verander gras maaiveld in duin vegetatie

p. 23

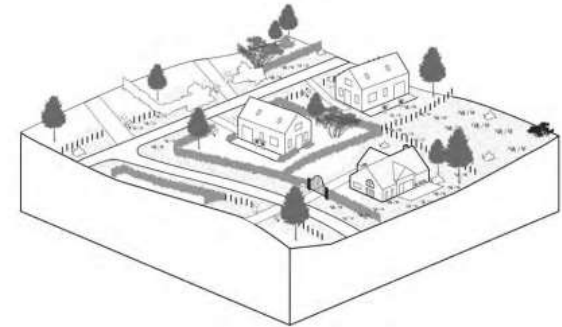
Labo Ruimte.
Stedelijk systeem kust

Villawijk bestaande situatie



Labo Ruimte.
Stedelijk systeem kust

Duurzaam en onderhoudsarm - vervang heggen en schuttingen voor een gemeenschappelijk duinlandschap

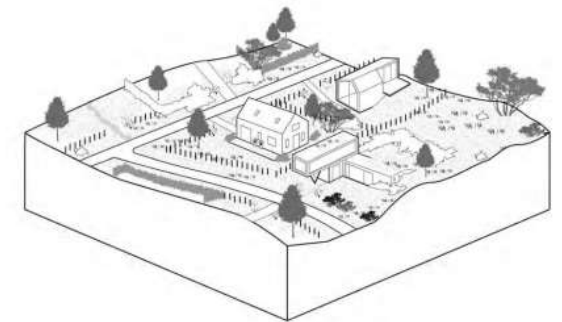


Kustverdediging - verander gras maaiveld in duin vegetatie

p. 24

Labo Ruimte.
Stedelijk systeem kust

Nieuwe architectuur typologieën spelen in op het landschap



Intensive Programme De Panne



Time frame **March 30 - April 6, 2020**
Travel on **Sunday, March 29 and Tuesday, April 7**
Host **Université Libre de Bruxelles**
Location **De Panne, Belgium, North Sea**





Next Steps

- Formation of **case study teams**
- Each study programme involved will focus on one case study area along the Belgian coast
- External participants can introduce own cases or work on the Belgian coast
- Teams will be given a **template** on the wiki
- Start research process guided by the **wiki** questions
- **Study** policy references:
https://colandwiki.hfwu.de/index.php?title=Reading_List_Coastal_Landscapes

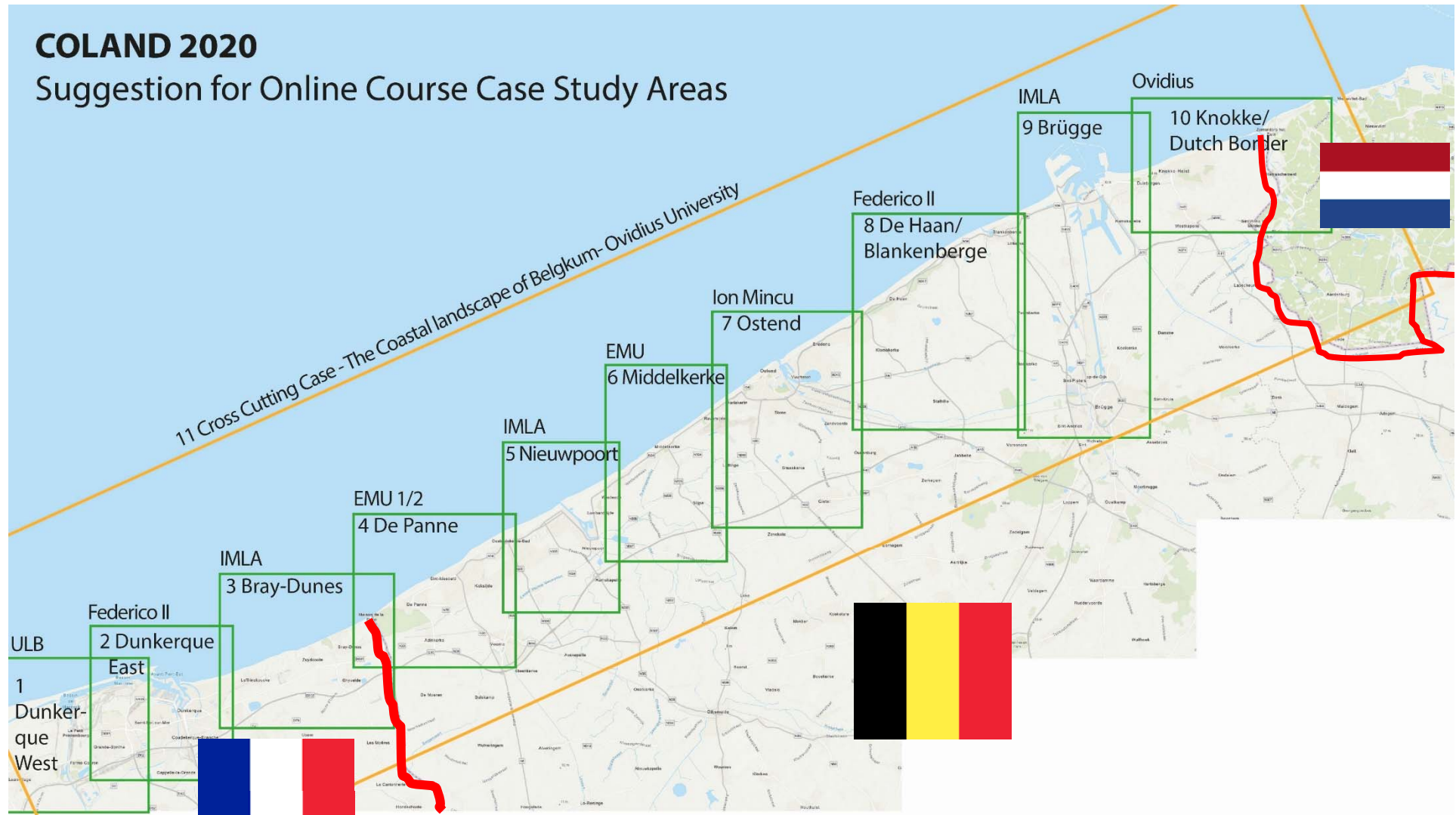
Your first presentation: Friday, February 21, 2020
Focus: Landscape System Analysis



Case study distribution

COLAND 2020

Suggestion for Online Course Case Study Areas





How to find your team?

- Organise yourself in local teams, min 4, max 6 people
- Go to this google spreadsheet:

<https://docs.google.com/spreadsheets/d/1997lcfCVmZfPkXEVrPCNkFz7AVzqAcHYMiURbWfGr0g/edit#gid=0>

- Enter your names to the group until **Tuesday, February 4**
- Seminar coordinator will provide your case study template and account data, then you need to coordinate yourself
- We will leave some room after each Friday session for team work



Resources + Tools

- **Seminar wiki:** Reading list and case study documentation
- **ILIAS:** Lecture recordings, lecture slides and group area for the De Panne Intensive Programme
- **Adobe Connect:** Plenary sessions, group presentations and working space for the groups
- **E-Mail:** Seminar invitations and organisational information



Next meeting

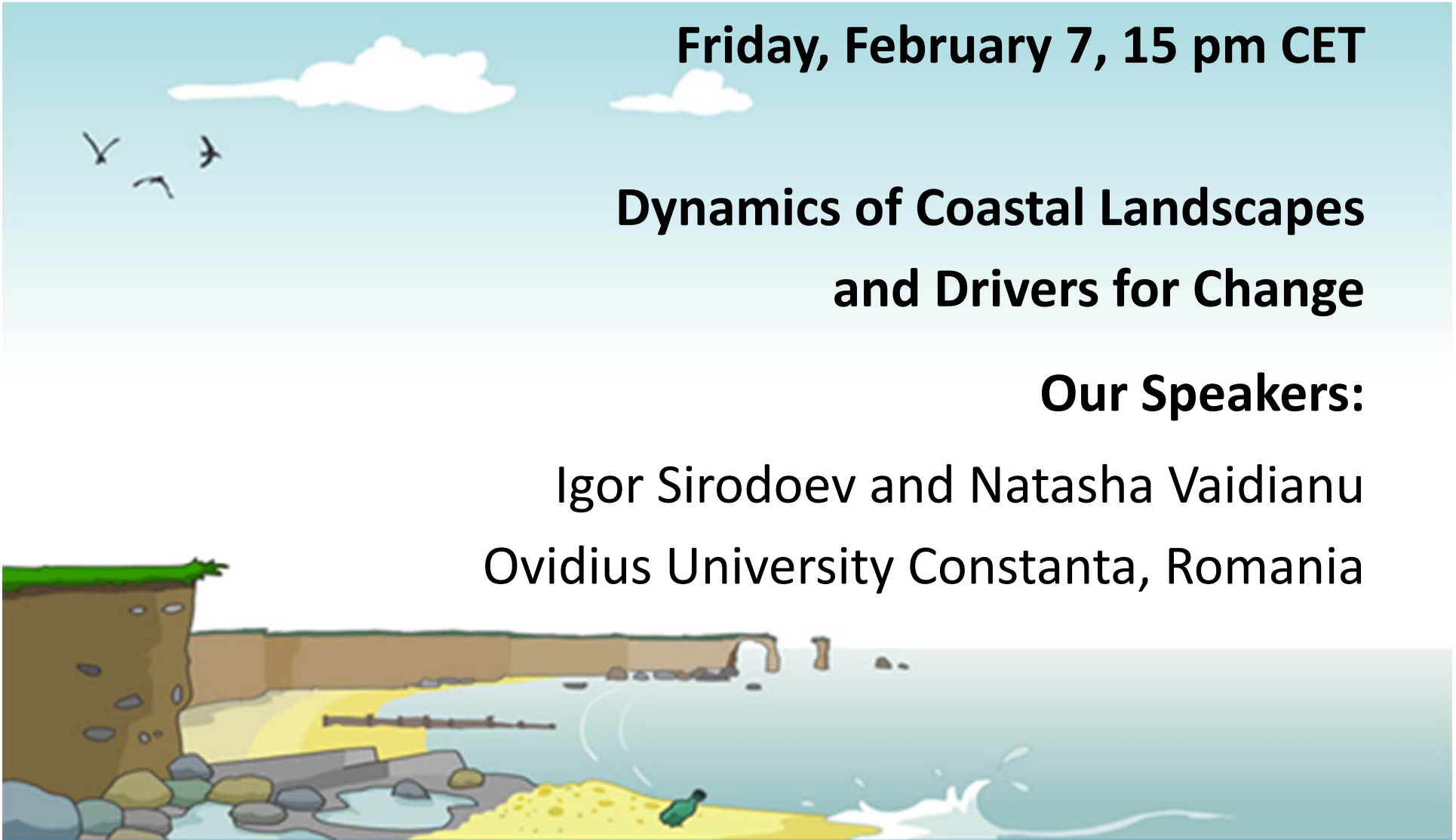
Friday, February 7, 15 pm CET

**Dynamics of Coastal Landscapes
and Drivers for Change**

Our Speakers:

Igor Sirodoev and Natasha Vaidianu

Ovidius University Constanta, Romania





Thank you for your attention

