

Soome laht

Sustainable enterprise in the country - Inspiration, the Pure Water theme park, Järsi village, Metsamõisa farm

Thursday 26. March 2014

Karst, kurisu, spring, bluespring

PNWTP focuses on the topic of clean water - is the place where you can get answers to numerous questions: How does clean water spring up, how does life depend on clean water? What does the quality of water change from? The Theme Park with its centre in villages in Põhja-Eesti, in Põhja-Eesti and Andlane parish-territory area in Põhja-Eesti.

The Theme Park bears the ideas of Tõnu Oks, a famous Estonian psychologist. "The Creator has hidden the knowledge of the world in the nature - it is our duty to find it." The services are offered to people who are interested in learning and caring about things happening in the surrounding nature.

Location

Program

Activities

Board of Directors and Members

Partners

In forest

Contact





Maast, metsamõisa ja

ch 2019

The Theme Park is located in Järva and Western-Viry county- in Metsamõisa farm in Järsi village of Tapa community, in Pikaverre village of Väike-Maarja community and in Ramma village , Järva-Jaani community. Study and hiking trails lie about 10 km around the centre in Järva, Tapa and Väike-Maarja county.





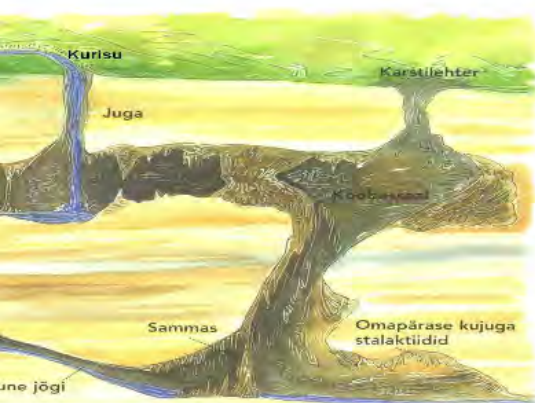
- 1 - Pandivere nitraaditundlik piirkond
- 2 - Adavere-Põltsamaa nitraaditundlik piirkond





PWTP focuses on the topic of clean water; it is the place where you can get answers to numerous questions: how does clean water spring up how does life depend on clean water? What does the quality of water change from? The Theme Park with its centre is situated in Pandivere Upland, in Pandivere and Adavere nitrit-sensitive area in Metsamõisa farm.

This Theme Park bears the ideas of Tõnu Ots, a famous Estonian psychologist, "The Creator has hidden the knowledge of the world in the nature – it is our duty to find it." The services we offer to people aim at introducing, using and caring about things happening in the surrounding nature.



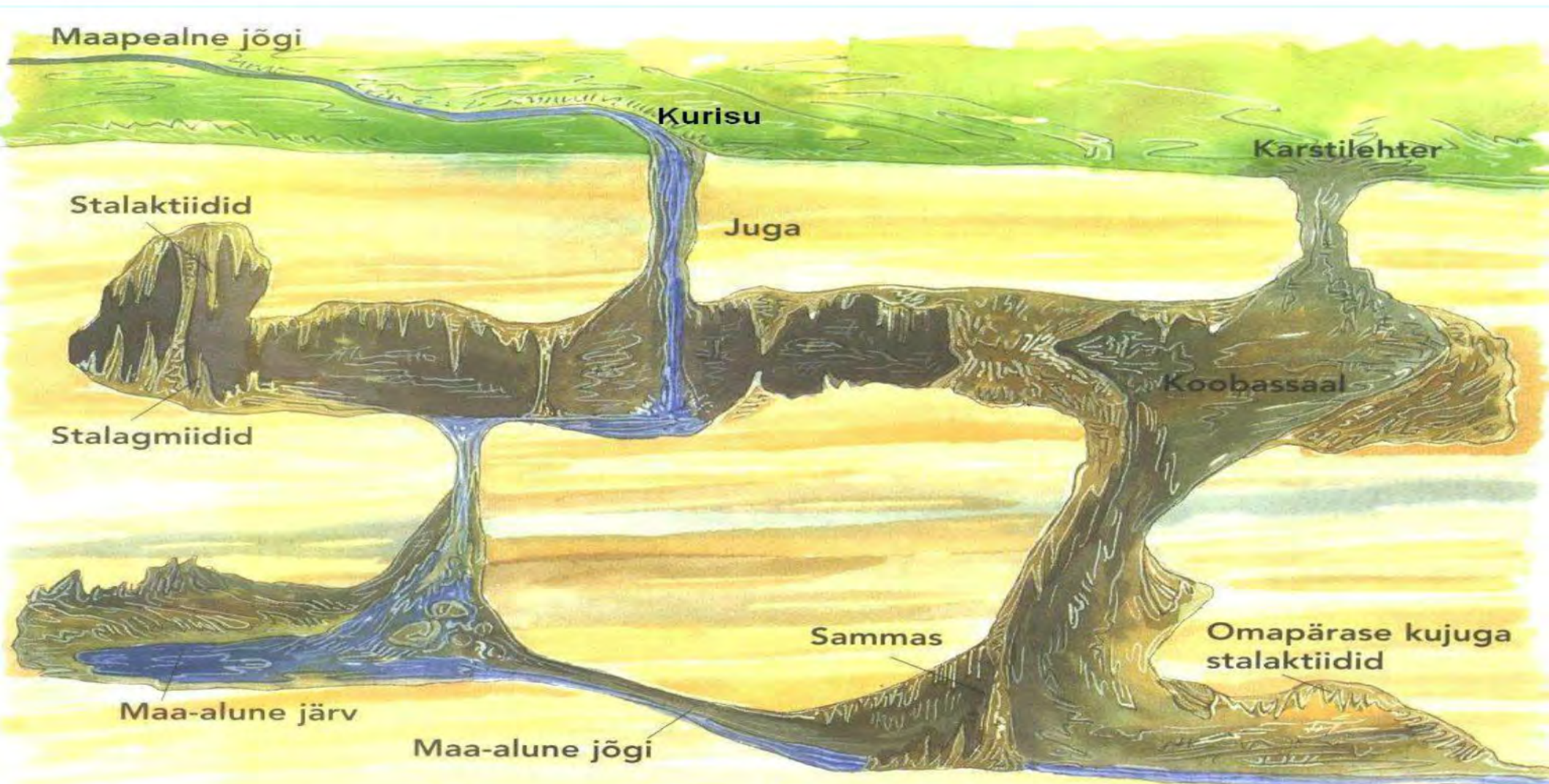
Programms

The services we provide are:
Technological interests will be
The theme park also has a store
improve their health.



Vol VII, No. EV/101





Sotsiaalse Ettevõtte Võrgustik



Ennriinn



SIIA SAAB

LIGIPÄÄS
KÕIGILE



VALGUSTA
END!

Ökokratt

www.okokratt.ee



METSAMOÏISA

PUHTA VEE KODU

TEEMAPARK

www.metsamoisa.ee



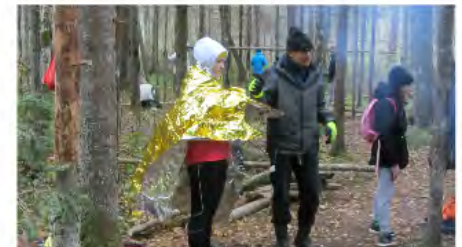
tt



Programms

The services we provide a
Technological interests w
The theme park also has a
improve their health.

The services we provide are aimed at introducing people in nature and teaching them how to use and keep them.
Technological interests will be able to participate in renewable energy and innovative m learning.
The theme park also has a steel-made Meeltheat where everyone can use their reference minds – see, hear, smell, comb and taste – and improve their health.































Prezi

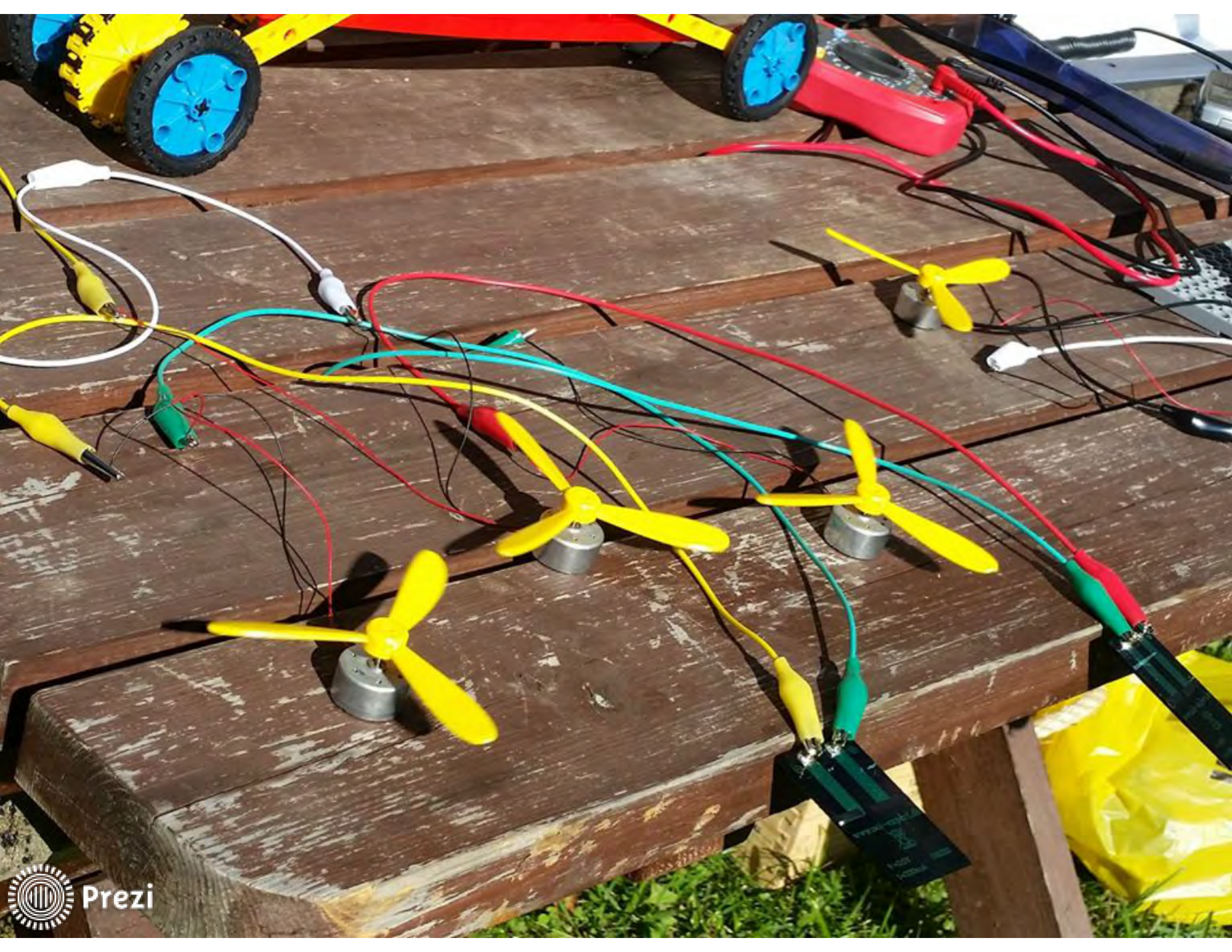


















arden

The garden is our green heart, a place to rest and have a pleasant time.

A man is the starting point for the concept of 'Senses garden' and his five senses: seeing, hearing, smelling, combustion and taste.

The aim of the steel gardening is to promote human well-being through plants and gardening. You do not always have to do gardening yourself - you can also enjoy what others have done and the surrounding greening

Terrassiaed

1. Pöösamaran 'Abbotswood' (*Potentilla fruticosa*)
2. Kaselehine enelas 'Thor' (*Spiraea betulifolia*)
3. Väikeseõiene helimikpööris 'Dale's Strain' (*Heuchera micrantha*)
4. Südajalehine bergeenia 'Winterglut' (*Bergenia cordifolia*)
5. Harilik karukell 'Rubra' (*Pulsatilla vulgaris*)
6. Pihkjasilatriis 'Kobold' (*Liatris spicata*)
7. Hinesalvel 'Ostfriesland' (*Salvia x superba*)

Tuulekella aed

1. Halliaruhein 'Elijah Blue' (*Festuca glauca*)
2. Mets-pilphein 'Aurea-marginata' (*Luzula sylvatica*)



Maitseaed

1. Iisop (*Hyssopus officinalis*)
2. Tüümian (*Thymus vulgaris*) (aed-liivatee)
3. Piparrohi (*Satureia hortensis* L.)
4. Majoraan (*Majorana hortensis* Moench)
5. Basiilik (*Ocimum basilicum* L.)
6. Piparmünt (*Mentha piperita*)
7. Salvei (*Salvia officinalis* L.)
8. Köömen (*Carum carvi*)
9. Koriander (*Coriandrum sativum* L.)
10. Till (*Anethum graveolens* L.)
11. Meliss (*Melissa officinalis* L.)
12. Harilik pune (*Origanum vulgare*)
13. Harilik ehvil (*Alfium roseum*)



Terrassiaed

1. Põõsasmaran 'Abbotswood' (*Potentilla fruticosa*)
2. Kaselehine enelas 'Thor' (*Spiraea betulifolia*)
3. Väikesed õiene helmikpööris 'Dale's Strain' (*Heuchera micrantha*)
4. Südajalehine bergeenia 'Winterglut' (*Bergenia cordifolia*)
5. Harilik karukell 'Rubra' (*Pulsatilla vulgaris*)
6. Täheksas liatris 'Kobold' (*Liatris spicata*)
7. Ovaline salvei 'Ostfriesland' (*Salvia x superba*)



Spiraalaed (Roosiaed)

1. 'Charming cover' (4 tk)
2. 'Mörskaroo' (4 tk)
3. 'White Cover' (4 tk)
4. 'Len Turner' (4 tk—roosa+punane)
5. 'Ronja' (4 tk)
6. 'Supreme cover' (4 tk)
7. 'Jan Spek' (4 tk—kollane)
8. 'Rosa Chines' (4 tk—roheline)
9. 'Bonica' (4 tk)
10. 'Red Rugosa' (3 tk)
11. 'J. P. Conell' (4 tk)
12. 'Kurista' (4 tk)
13. 'Garden of the World' (3 tk)
14. 'Nina' (4 tk)
15. 'Piccolo' (4 tk)



Tuulekella aed

1. Hall aruhein 'Elijah Blue' (*Festuca glauca*)
2. Mets-piiphein 'Aurea-marginata' (*Luzula sylvatica*)

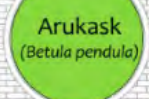
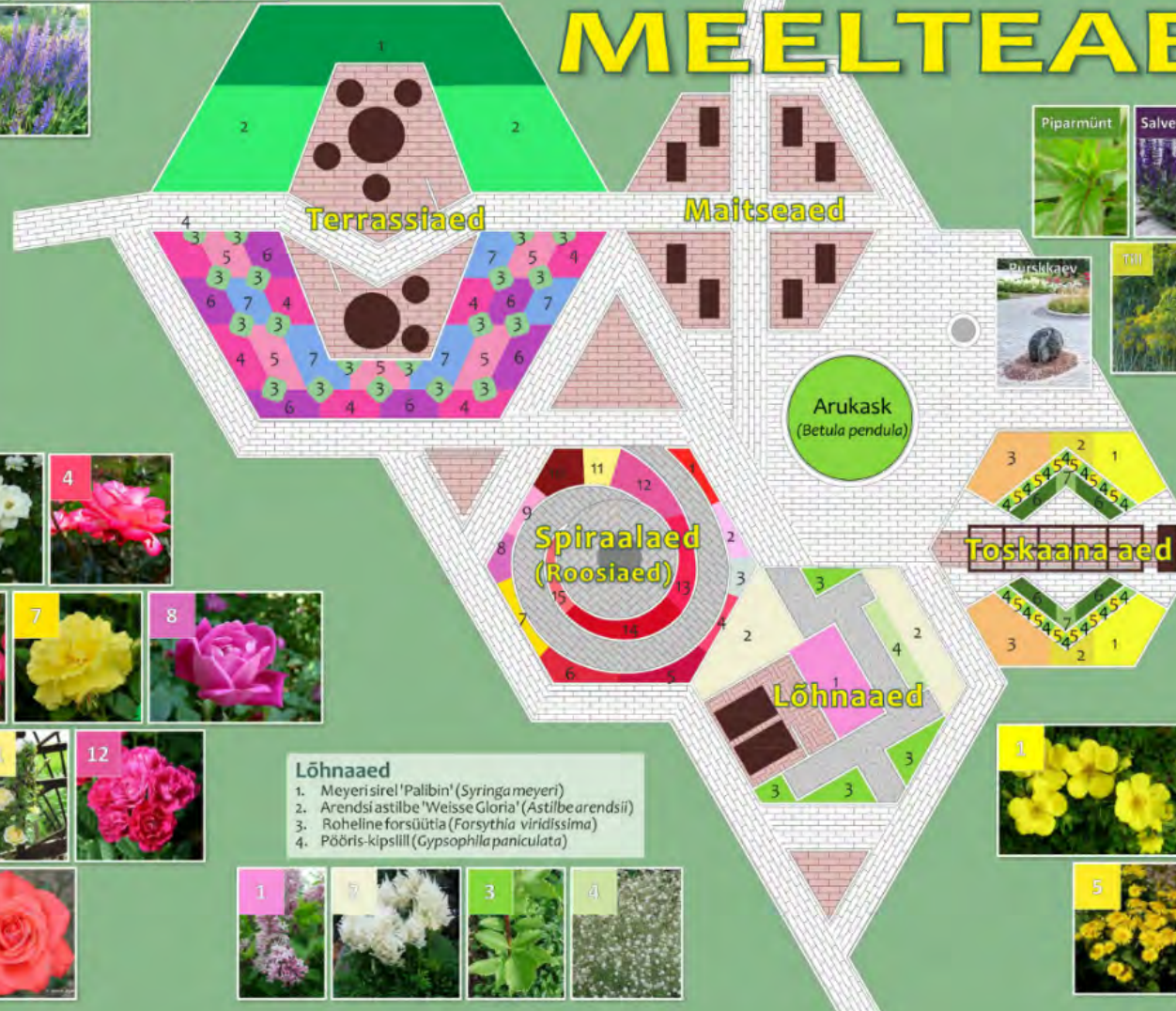


Maitseaed

1. Ilisop (*Hyssopus officinalis*)
2. Tuümian (*Thymus vulgaris*) (aed-liivatee)
3. Piparrohi (*Satureia hortensis* L.)
4. Majoraan (*Majorana hortensis* Moench)
5. Basiilik (*Ocimum basilicum* L.)
6. Piparmünt (*Mentha piperita*)
7. Salvei (*Salvia officinalis* L.)
8. Köömen (*Carum carvi*)
9. Koriander (*Coriandrum sativum* L.)
10. Till (*Anethum graveolens* L.)
11. Melissa (*Melissa officinalis* L.)
12. Harilik pune (*Origanum vulgare*)
13. Harilik sibul (*Allium cepa* L.)



MEELTEAED



Toskaana aed

1. Põõsasmaran 'Gold Star' (*Potentilla fruticosa*)
2. Jaapani enelas 'Golden Princess' (*Spiraea japonica*)
3. Jaapani enelas 'Goldflame' (*Spiraea japonica*)
4. Hosta 'Golden Tiara' (*Hosta x hybrida*)
5. Kaukaasia kitsekakar 'Leonardo Compact' (*Doronicum orientale*)
6. Mets-viinapuu (*Parthenocissus quinquefolia*)
7. Harilik humal (*Humulus lupulus*)



Lõhnaaed

1. Meyeri sirel 'Palibin' (*Syringa meyeri*)
2. Arendsi astilbe 'Weisse Gloria' (*Astilbe arendsii*)
3. Roheline forsüütia (*Forsythia viridissima*)
4. Pööris-kipsliil (*Gypsophila paniculata*)





Prezi



NutiAkadeemia

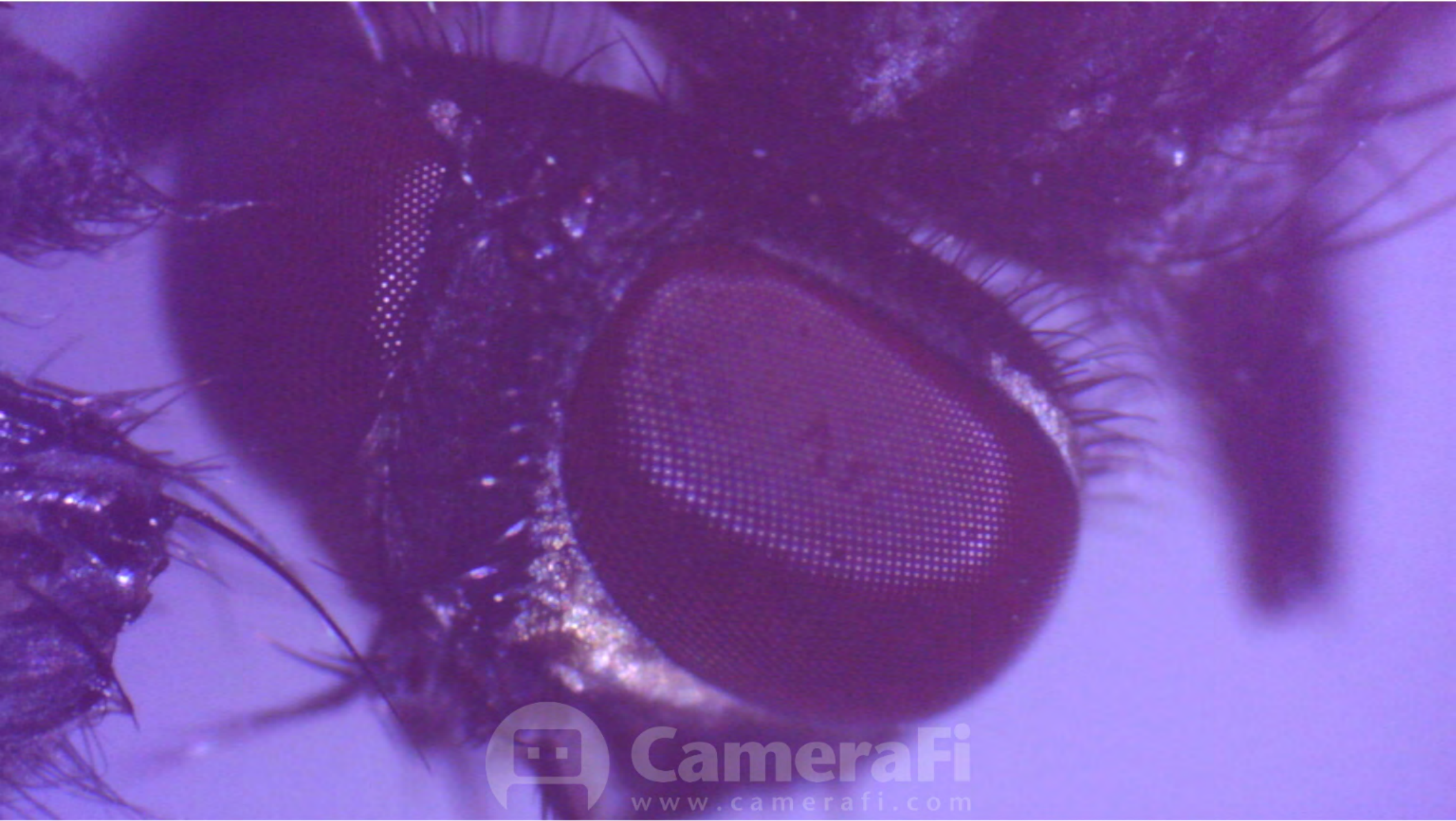
The aim of the smart academy is to promote the use of smart equipment in teaching, both among teachers and among pupils



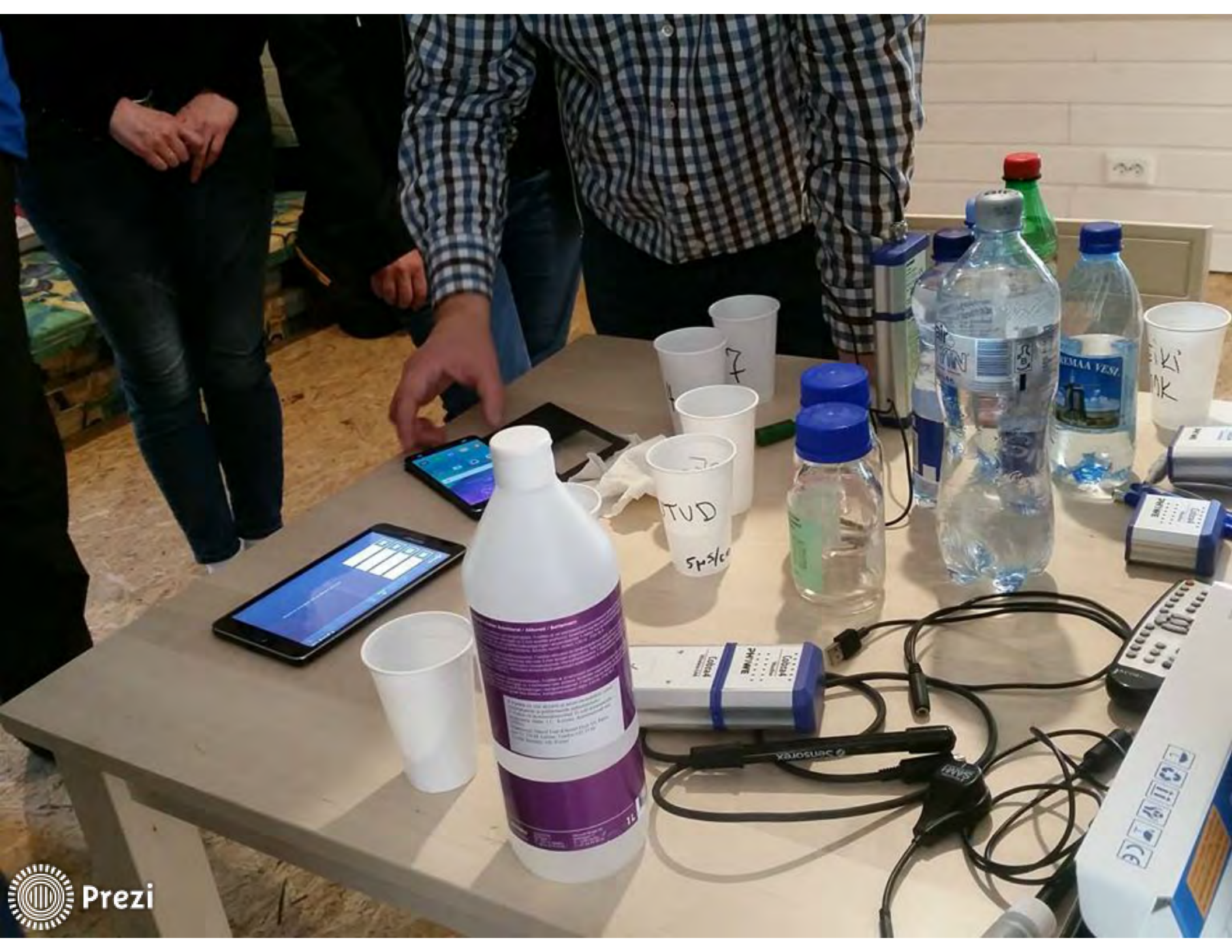


LANDSCAPAR





 **CameraFi**
www.camerafi.com











Haapsalu

Learning centre







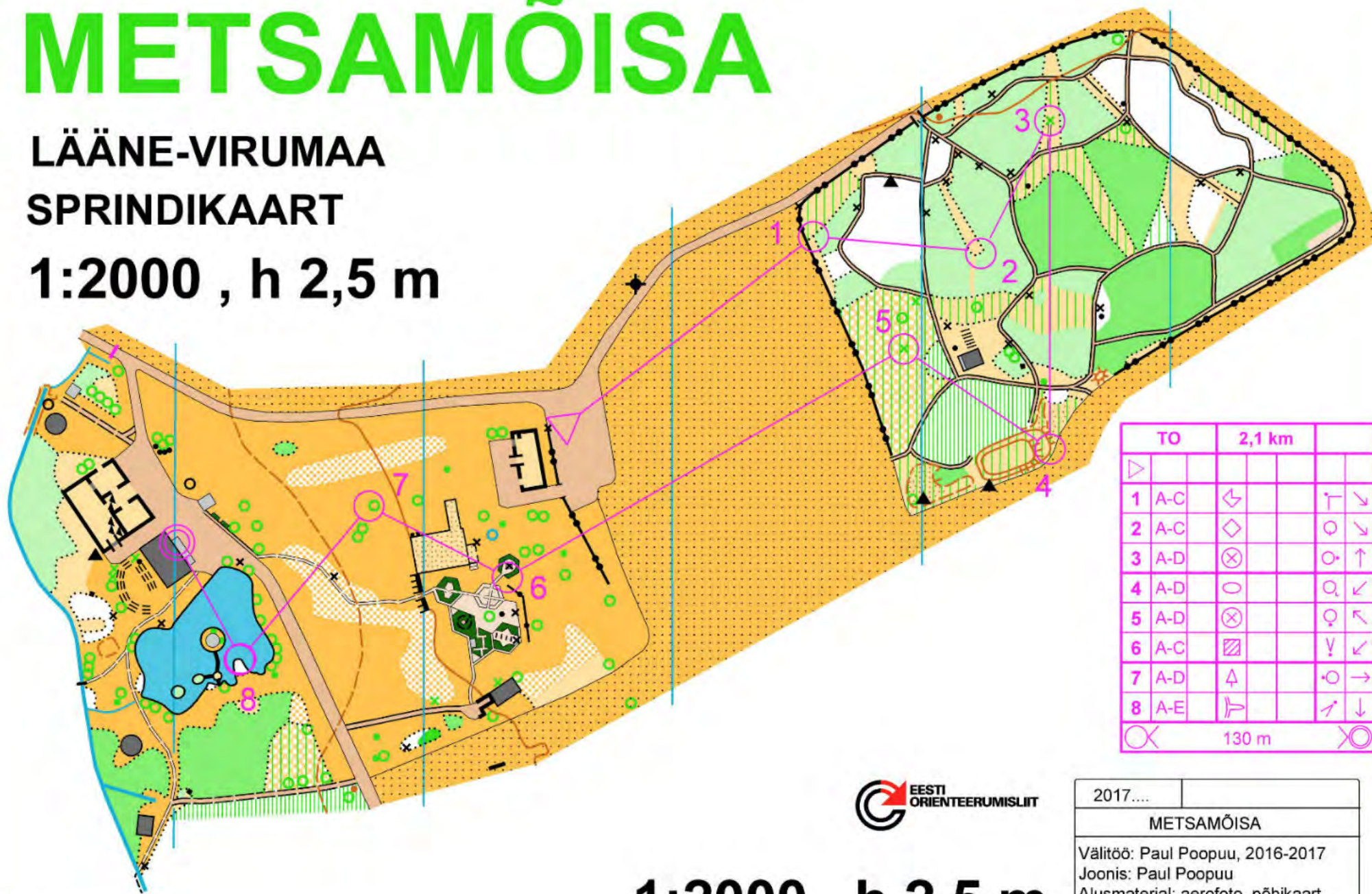
Activities

METSAMÕISA

LÄÄNE-VIRUMAA

SPRINDIKAART

1:2000 , h 2,5 m



TO	2,1 km		
▽			
1 A-C	↙		↘
2 A-C	◇		○ ↘
3 A-D	⊗		○ ↑
4 A-D	○		○ ↘
5 A-D	⊗		○ ↗
6 A-C	▨		▽ ↘
7 A-D	△		○ →
8 A-E	↗		↘ ↘
○	130 m		○



2017....	
METSAMÕISA	
Välitöö: Paul Poopuu, 2016-2017	
Joonis: Paul Poopuu	
Alusmaterjal: aerofoto, põhikaart	

1:2000 , h 2,5 m



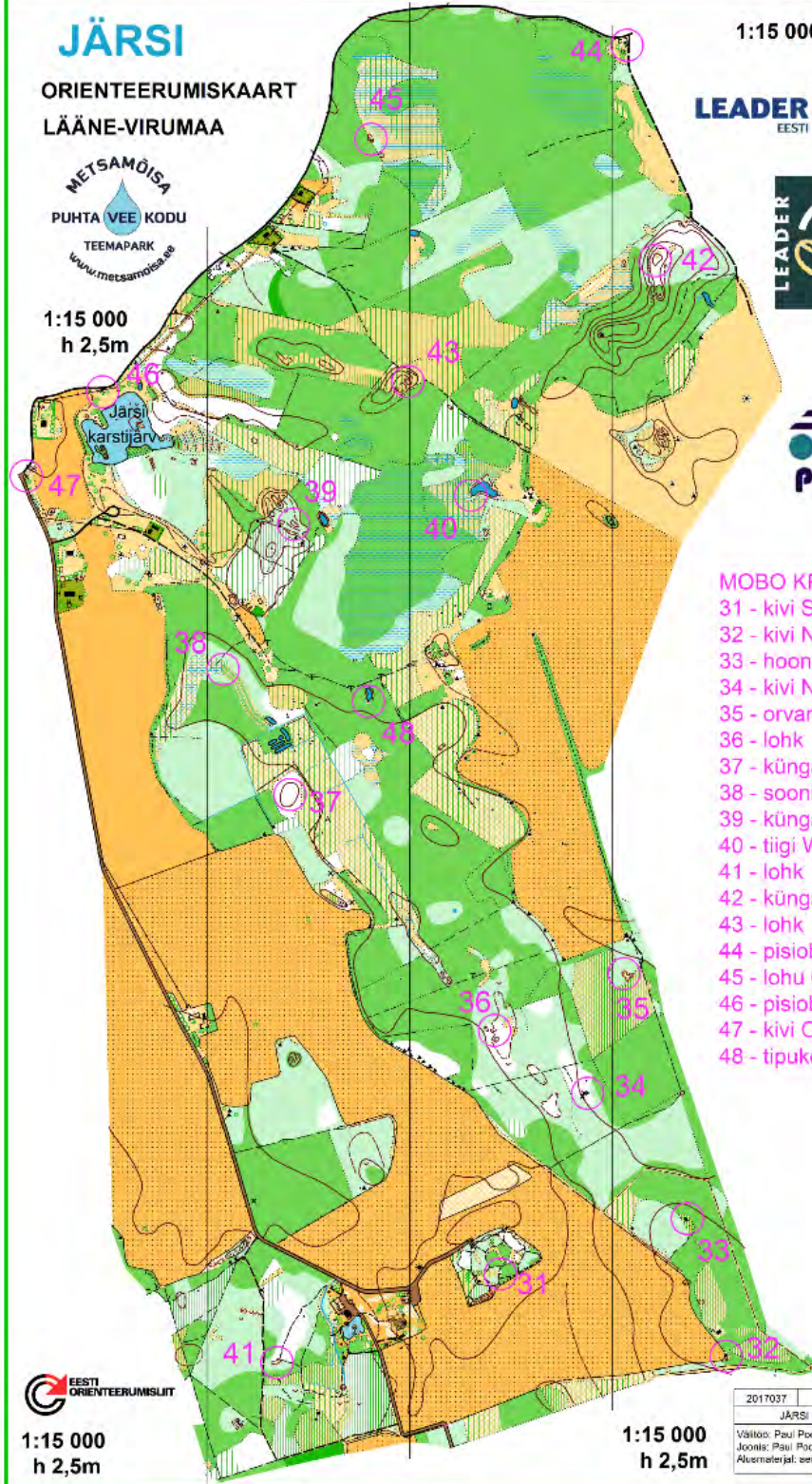
JÄRSI

ORIENTEERUMISKAART LÄÄNE-VIRUMAA



1:15 000
h 2,5m

1:15 000 , h 2,5m



- MOBO KP-d:
- 31 - kivi SO-külg
 - 32 - kivi NO-külg
 - 33 - hoone O-külg
 - 34 - kivi N-külg
 - 35 - orvand
 - 36 - lohk
 - 37 - küngas
 - 38 - soonire ots
 - 39 - küngas
 - 40 - tiigi W-ots
 - 41 - lohk
 - 42 - küngas
 - 43 - lohk
 - 44 - pisiobjekt
 - 45 - lohu O-serv
 - 46 - pisiobjekt
 - 47 - kivi O-külg
 - 48 - tipuke

O	2,1 km			
C	↖		↗	↘
C	◇		○	↘
D	⊗		○	↑
D	○		○	↘
D	⊗		○	↖
C	▨		!	↘
D	△		○	→
E	↗		↖	↓
130 m				

METSAMÕISA
 Paul Poopuu, 2016-2017
 Paul Poopuu
 Aerofoto, põhikaart



1:15 000
h 2,5m

2017037	METSAMÕISA
JÄRSI	
Välito: Paul Poopuu, 2016-2017	
Joonis: Paul Poopuu	
Aerofoto, põhikaart	

1:15 000
h 2,5m

The path of precision orienteering and the MOBO trail



House of Thoughts
and Workers

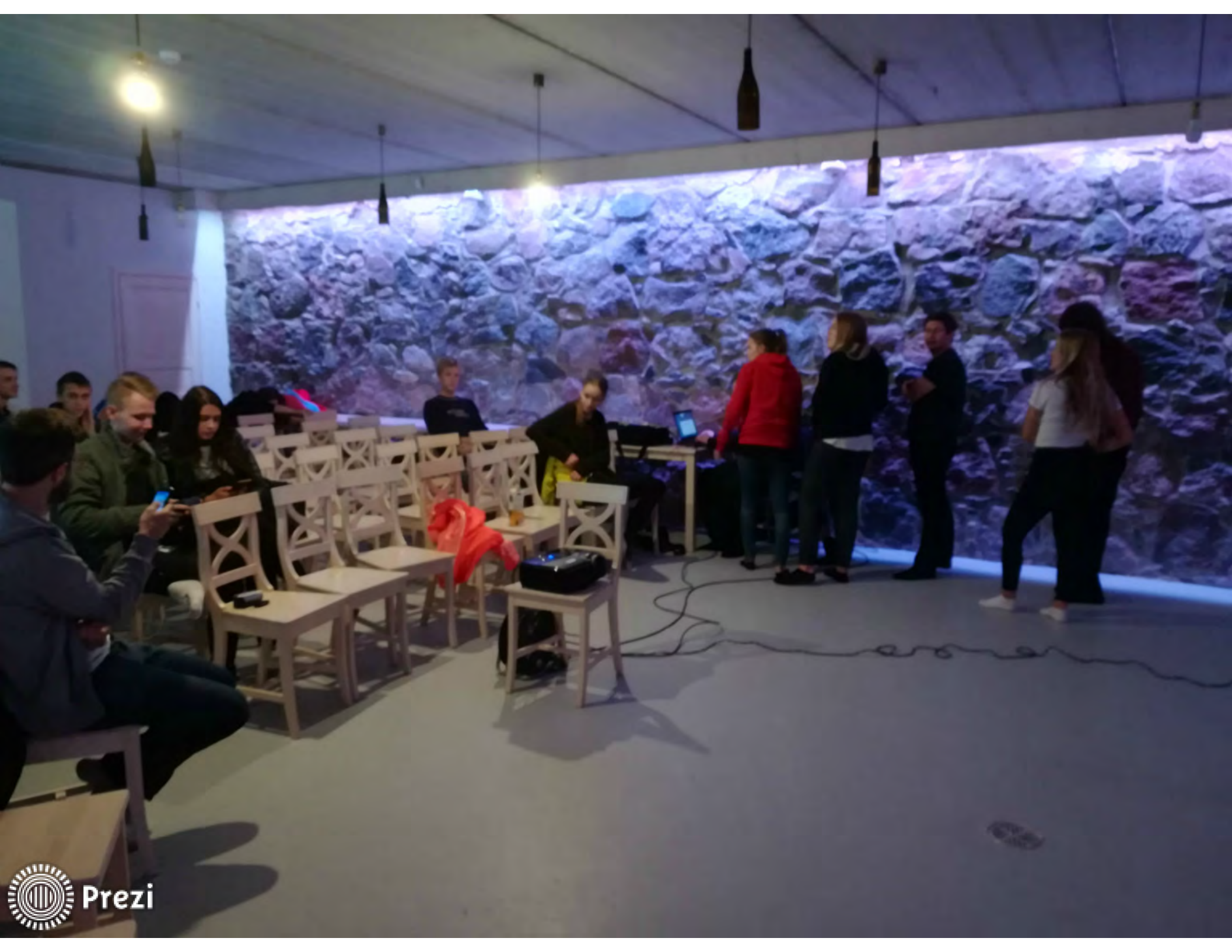




House of Thoughts and Workers









In forest



A wheelchair in a forest park





- The forest park is a park of various species of trees and plants from the 16th century, which is accessible to road users with wheelchairs.
 - The path of nature is equipped with information sheets and building points (QR) square codes.
- There are also practical challenges.
The length of the natural tracks is a total of approximately 45 km













Contact

Priit Adler
Pure water theme park
Metsamõisa farm
info@metsamoisa.ee
+372 5132149
SKYPE: priadler
FB: <https://www.facebook.com/metsamoisa>
www.metsamoisa.ee
www.okokratt.ee
www.keskkonnatelk.ee
www.nutiakadeemia.net