

6th LE:NOTRE Landscape Forum 2017
Freising-Weißenstephan, May 16th - 20th, 2017

Working Group 'Heritage and Identities'

Recovering landscape biography between the rivers Isar and Amper:
Landscape designed by power meets landscape managed by people



Palace Garden Schleißheim | *image: Harlind Libbrecht*

Contents

Contents	1
Workshop Outline	2
Workshop Outcomes, References	7
Workshop Leaders and Local Experts	8
Detailed Programme	11
Planned Excursion Route	16

Workshop Outline

This workshop focuses on the historical landscape structures in the North of Munich and their potentials for a contemporary and dynamic landscape development.



Water fountain in the baroque gardens of Schleißheim Palace
(source: Ingrid Schegk)



Beginning of the Nymphenburg-Biederstein Canal close to Nymphenburg Palace
(source: PeriphraStika)

Why is this case interesting?

Bavarian heritage and identities are often related to traditional costume, music, and (beer) festivals as well as to the famous Bavarian kings like Ludwig II and his castles in front of the alpine skyline which are high-frequented touristic attractions. Cultural heritage landscapes are mostly associated with lovely villages and their baroque onion-dome churches in the hilly south of Munich.

Less famous though is the heritage landscape in the northern part of the Munich gravel-plain between the cities of Freising in the North, Dachau in the West and the Isar River in the East. Here, two very different types of heritage landscapes are meeting:

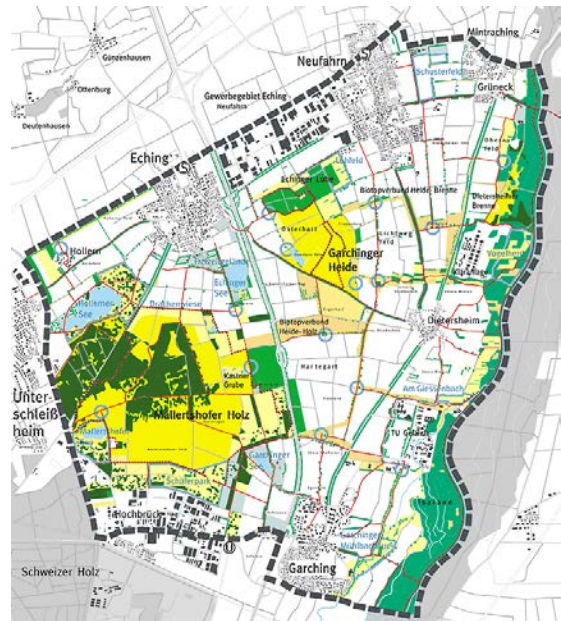
On the one hand there is the historic system of canals and consciously designed visual axes between the rivers Isar, Würm and Amper. This landscape, covering more than 200 km², was created as a water-way-system during the Baroque period in the 17th and 18th century, mainly under the reign of the Bavarian elector Max Emanuel (1662-1726). The system of canals and vistas connects four royal castles, the Munich Residence in the inner city, the Nymphenburg Palace, the Schleißheim Palace Complex and the Dachau Palace. It represents the 'exclusive' part of the heritage landscape designed 'top-down' by powerful monarchs and constructed by hundreds of forced labourers, mainly from Turkey. The baroque vistas, pointing e.g. towards church towers and similar landmarks, define the baroque approach of landscape aesthetics and identity. The canals were used for water supply, transportation on boats or rafts as well as for royal trips with Venetian gondolas from castle to castle.

Today, the still existing canals are protected as monuments, the vistas are documented and part of contemporary concepts for the region.

On the other hand, in addition to these ‘royal’ landscape structures, different vernacular landscape elements are shaping the heritage pattern of the region such as important historical (dry) heath-lands, fens and wetlands, traditional forests. In a way, this part of the landscape represents the ‘bottom-up’ heritage developed under the influence of different more or less uncoordinated everyday uses.



Rivers, creeks and canals in the area between the castles Schleißheim and Nymphenburg (source: Periphrastika)



The “Heathland Project”: Grasslands and forests close to Garching (source: Heideflächenverein Münchner Norden e.V.)



The canal between Schleißheim and Dachau (source: Periphrastika)



Heath-land with sheep and goats (source: Helmut Karger, <http://www.gpswandern.de>)

This heritage landscape with its overlay of diverse patterns offered unique sceneries for the Landscape Painting movement of the late 19th and beginning 20th century. During this period, Dachau became a popular meeting point for landscape painters and famous European artist colony. Numerous paintings and drawings, some also created by amateur artists, are a great resource of how landscape has been perceived and interpreted at that time.



Landscape perception anno 1900: Cabins (left) by Franz Marc (1880–1916) and Shepherdess (middle) by Fritz von Uhde (1848-1911) in the 'Dachauer Moos'; painting ladies, disparagingly called 'Malweiber' (right, source: Gemäldegalerie Dachau)

Today, the city of Dachau is mainly known for the concentration camp set up 1933 during the Nazi regime. In the twelve years of its existence over 200.000 persons from all over Europe were imprisoned here and in the numerous subsidiary camps. 41.500 were murdered. On April 29 1945, American troops liberated the survivors. The memorial site on the grounds of the former concentration camp was established in 1965. Between 1996 and 2003 a new exhibition on the history of the Dachau concentration camp was created, following the theme of the 'Path of the Prisoners' (source: www.kz-gedenkstaette-dachau.de/index-e.html). With about 800'000 visitors per year (2014) the site is one of the most important memorials of this dark epoch in Germany.



The Concentration Camp Memorial (source: Harlind Libbrecht)

An important site of the younger heritage in this region is the Olympic rowing regatta course with its more than 2 km long artificial lake in the south of the Dachau-Schleißheimer-Canal. It was built for the Olympic Games 1972 in Munich and represents, like the Olympic Park, a characteristic piece of German post-war modernity.

Typical for the youngest vernacular heritage in the North of Munich are numerous gravel excavation sites. The gravel industry increased dynamically during the building boom in 1960s and 70s and is still an important sector. Many of former excavation sites have been cultivated as swimming lakes and ponds. Today, they offer excellent opportunities for recreation as well as for nature protection in the northern belt around Munich.



The Olympic rowing regatta course (source: Ingrid Schegk)

During the last decades, the landscape heritage is strongly influenced by various urban developments in the growing metropolitan area of Munich, e.g. new traffic links and nodes, the extension of housing and industrial/commercial areas, but also changes in agricultural production and energy supply, recreation activities etc.

Aspects and questions this workshop is going to address:

Against this background the workshop is going to explore the potentials of these heritage landscapes in terms of blue-green infrastructure. Furthermore, the aim of the workshop could be to strengthen them as a kind of superstructure for future developments. The results of the workshop will be the basis for an intercommunal collaboration of the municipalities concerned.

Therefore the forum aims to address the following questions:

- How can the cultural landscape elements be purposefully used as structural components for the future development of the peri-urban landscape? What are their potentials, e.g. related to climate change, mobility etc.?
- How can visibility and perception of the large and identity-forming landscape connections be improved?
- Which key areas can be identified?
- How can the meaning of heritage and identities be understood in times of migration and changing cultural values?

Site specific questions:

- **Dachauer Moos/Freisinger Moos:** How can the Moos landscape be experienced? In which ways can natural value be combined with tourism? Can projects ‚New Life in the Dachauer Moos‘ or ‚MOORuse‘ act as drivers for new developments in the region?
www.verein-dachauer-moos.de/projekte/bayernnetznatur-projekt-neues-leben-im-dachauer-moos/das-projekt/20-kurzbeschreibung-des-biodiv-projektes-„neues-leben-im-dachauer-moos“.html
www.hswt.de/forschung/forschungsprojekte/vegetationsoekologie/mooruse.html
- **Dachau Concentration Camp site:** Do we agree with the point of view of the author Sybil Milton in: *Perilous landscapes: Concentration Camp Memorials between Commemoration and Amnesia?* (article will be available)
Can the different KZ-historical sites in Dachau be combined in a larger visitors' route like the 'Path of Remembrance'?
The concentration camp site was inhabited by war refugees till the early 1960's, a lot of protest occurred when the site was declared monument for commemoration.
Who decides on 'places of commemoration'?
- **Dachauer landscape painters' school:** Can the 19th century landscape as painted by many artists still inspire landscape artists today? Can the landscape developer/designer find inspiration in the paintings?
- **Olympic Regatta Course:** How to design for mass-events, and how to manage the necessary infrastructures for these events? Destruction? Conservation? Re-Use? Temporary constructions? Flexible design? New functions?...

Workshop Outcomes

The workshop outcome will be discussed with the group during the workshop.

Expected outcomes could be:

- Joint report of the group with reflections and good-practice examples from research, education and professional practice relating the Munich context to other European metropolitan areas
- Forum outcome statement
- Forum publication
- Project ideas for future collaborations, e.g. Interreg / Life+ / Horizon 2020 / ERASMUS etc.

References, Links (summary):

Verein Dachauer Moos e.V. (Editor): Dokumentation der historischen Sichtachsen und Kanäle der Schleißheimer Schlösser

Pirkl, Rieder, Theurer: Landschaftskonzept Münchner Norden

Ott, P. (2009): Schleissheimer LANDSCHAFT. Ordnungssysteme in Stadt und Landschaft

Milton, S. (2001): Perilous landscapes: Concentration Camp Memorials between Commemoration and Amnesia. In Wolschke-Bulmahn, Joachim: Places of commemoration : search for identity and landscape design

Hennecke, S.; Keller, R.; Schneegans, J. (2012): Demokratisches Grün – 40 Jahre Olympiapark München

Reitmeier, J.L. (1995): Dachau ein Kunstbilderbuch

Zweckverband Dachauer Galerien und Museen (2001): FreiLichtMalerei. Der Künstlerort Dachau um 1870-1914

<http://geoportal.bayern.de/bayernatlas-klassik/>

<http://www.blfd.bayern.de/denkmalerfassung/denkmalliste/index.php>

<https://www.bayerische-landesbibliothek-online.de>

<https://www.kz-gedenkstaette-dachau.de/index-e.html>

https://www.kz-gedenkstaette-dachau.de/selected_literature.html

<https://www.kz-gedenkstaette-dachau.de/path-of-remembrance.html>

<http://www.zeitschrift-amperland.de/artikelarchiv.php>

<http://www.heideflaechenverein.de/projekte/landschaftskonzept.html>

<http://www.verein-dachauer-moos.de/>

Workshop Leaders and Local Experts

Workshop Leaders



Harlind Libbrecht (Le Notre Institute)

Harlind Libbrecht graduated as a landscape architect at the Horticultural Institute, Melle in 1981 (now University College Ghent). He studied Master in Monuments and Landscape Conservation at University Antwerp. After working in different design offices and professional practice, he started teaching at the University College Ghent in 1989. He teaches design studio's in landscape architecture and also teaches survey methods in historical landscapes. Lately he has been involved in landscape research in the project 'The Ypres Salient, from memory to remembrance', on Chateau parks and their role in the First World War landscape of the Ypres Salient. Since 2012 he has been teaching in the IMLA-program (International Master of Landscape Architecture) organised by the TU, Freising and TU Weihenstephan, Germany and as a guest teacher in Cracow University, Poland and the Master program in Landscape architecture of the Juana de Vega Foundation in A Coruña, Spain. He is a founding member of the Le Notre Institute for interdisciplinary landscape studies. Co-author of Europe's Deadly Century Perspectives on 20th century conflict heritage edited by Neil Forbes, Robin Page and Guillermo Pérez, Conservation of First World War landscapes: A landscape architecture perspective, 2009. Co-auteur of the Le Notre landscape monographs Antalya, 2012, Rome, 2013, etc. Today he is involved in a research project 'An Open End: the search for new physical and mental spaces for saying goodbye in the event of death.'

Email address: harlindlibbrecht@gmail.com



Ingrid Schegk (HSWT)

Education

Studies in landscape architecture (Technical University Munich), final research/thesis work in urban planning/design

Professional experience

1984-1995: Freelance landscape architect; different prizes and awards in landscape architecture competitions

Since 1995: Part time collaboration with SCHEGK Landscape Architects and Urban Planners (www.schegk.de): guidance for competitions, execution planning and detailing, process and quality management

Academic experience

Since 1995: Full professor for landscape construction and design at Weihenstephan University of Applied Sciences (HSWT), Department of Landscape Architecture
Lectures and research projects in landscape construction and material science, technical planning and detailing, computer aided design, design studios (Bachelor's and Master's programmes), practical workshops, guest lectures and studios in Austria, Spain, Ireland, Italy, Belgium, Bosnia etc.

2001 – 2007: Vice president of HSWT

Since 2011: programme director of the International Master of Landscape Architecture (IMLA) at HSWT

Research

Vernacular landscape constructions, sustainable design, sustainable constructions and material use, reconstruction of historical sites, process management in landscape architecture, teaching methodology
Numerous publications (books and articles)

Email address: ingrid.schegk@hswt.de

Local Expert



Didier Vancutsem

Born in Belgium, he is an international consultant in Urban and Regional Planning, Landscape Planning, Infrastructure and Environmental Management with more than 25 years research and planning experience; his consultancy is based in Munich / Germany.

He has degrees in City and Regional Planning, Landscape Architecture and Regional management and is Professor and Lecturer at the Brussels University Faculty of Architecture (ULB) / Belgium, Universities of Munich / Germany, Lille / France and Perm University / Russia.

As planning consultant, he has gained professional experience worldwide, e.g. as expert for the EU Commission, the UNECE, the European Environment Agency, in the elaboration of national strategies for urban development, in regional strategies and abroad (Africa, Russia, Asia), and on the local level. He is involved in European and international research projects.

He is also member of different professional societies, honorary appointments in Europe and worldwide, IFLA Europe Delegate and is serving ISOCARP, the International Society of City and Regional Planners as Secretary General since 2013.

Email address: didier.vancutsem@ulb.ac.be

Detailed Programme

Day 1 - Tuesday, 16th of May			
Time	Activities and/or topics	Actors	Place / Room
13 00	Registration starts (until max. 20 00)		TUM (iGZW) / room DG01 (3rd floor)
13 30	only in case of a registration/participation: Doctoral Colloquium and in parallel Teaching Workshop	Ellen Fetzer Elke Mertens, Nilgül Karadeniz	HSWT (C4)/C4.211 (ground floor) TUM (iGZW) / room DG01 (3rd floor)
16 30	Coffee break		TUM (iGZW) / DG01
17 30	Guided campus walk	Frieder Luz, Jonas Würtele	start (and end) at TUM (iGZW) / DG01
18 30	Welcome Event and Introduction Organisers Boards	LNI, ECLAS, TUM, HSWT etc.	TUM (iGZW) / DG01
20 00	Welcome reception		TUM (iGZW) / DG01

Day 2 - Wednesday, 17th of May

Time	Activities and/or topics	Actors	Place / Room
8 00	Registration starts (until max. 11 00)		HSWT (D1) / Foyer (ground floor)
09 00	(Short) Welcome, Keynotes about 'Inclusive Landscapes', part 1: Landscape from the human and social perspective, Environmental Justice from the perspective of ethics and health, Moderation and discussion: How do we plan inclusive landscapes?	Nilgül Karadeniz Olaf Kühne Claudia Hornberg Bettina Oppermann	HSWT (D1) / room D1.302 (1st floor)
10 30	Coffee break		HSWT (D1) / Foyer
11 00	Keynotes about 'Inclusive Landscapes', part 2: Social Inclusion from the perspective of political science, Transdisciplinary Concepts and Methods from the perspective of social ecology, Moderation and discussion: How do we plan inclusive landscapes?	Jan-Hendrik Kamlage Diana Hummel Bettina Oppermann	HSWT (D1) / D1.302
12 30	Introduction to the region of Munich's North and to the excursions	Stephan Pauleit	HSWT (D1) / D1.302
13 00	Lunch break		HSWT (D1) / Foyer
14 00	Excursions start (by bus)	Route 'heritage and identities'	
19 30	Joint dinner in the project area	all	Landgasthof Hofmeier, Hetzenhausen
~ 23 00	Return to Freising (by bus)		

Day 3 - Thursday, 18th of May

Time	Activities and/or topics	Actors	Place / Room
09 00	Short impulses of local experts and panel discussion	Andrea Gebhard, Johannes Gnädinger, Benjamin David, Moderation: Henrik Schultz	HSWT (D1) / D1.302
10 30	Coffee break		HSWT (D1) / Foyer
11 00	Working group's start up: Round of introduction	Working group with Harlind Libbrecht and Ingrid Schegk	HSWT (D1) / D1.310
12 30	Lunch break		HSWT (D1) / Foyer
13 45	LLF group photo		
14 00	Working group: Discussing aims, questions and possible outcomes	Working group with Harlind Libbrecht and Ingrid Schegk	HSWT (D1) / D1.310
15 30	Coffee break		HSWT (D1) / Foyer
16 00	Working in thematic teams	Working group with Harlind Libbrecht and Ingrid Schegk	HSWT (D1) / D1.310
20 00	Free evening		

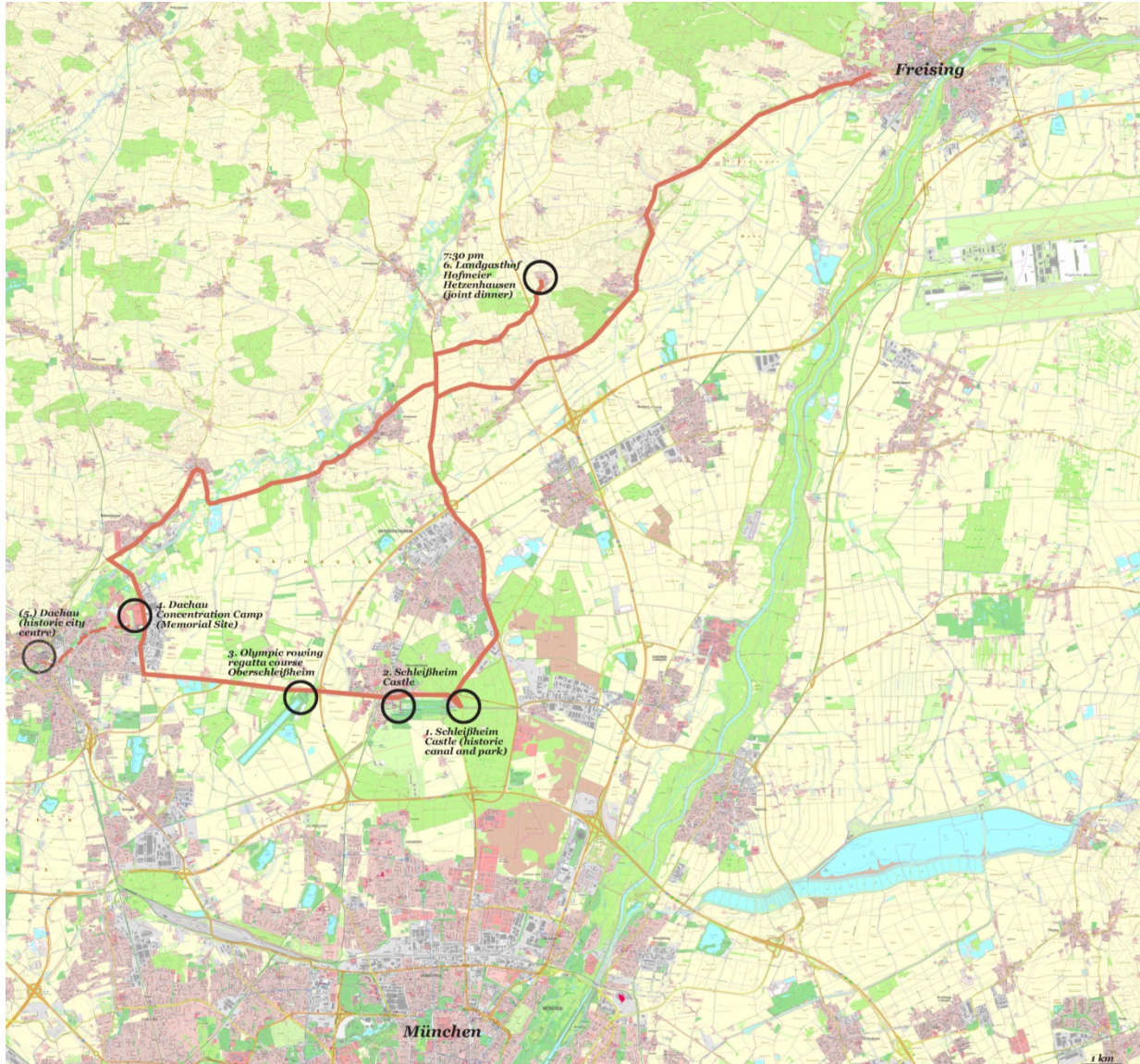
Day 4 - Friday, 19th of May

Time	Activities and/or topics	Actors	Place / Room
09 00	Working group	Working group with Harlind Libbrecht, Ingrid Schegk and Didier Vancutsem	HSWT (D1) / D1.310
10 30	Coffee break		HSWT (D1) / Foyer
11 00	Working group	Working group with Harlind Libbrecht, Ingrid Schegk and Didier Vancutsem	HSWT (D1) / D1.310
12.00	Exchange of the working groups with the Landscape perception group	Working groups with Landscape Perception group	HSWT (D1) / D1.310
12 30	Lunch break		HSWT (D1) / Foyer
14 00	Working group (Finalising Outcome)	Working group with Harlind Libbrecht, Ingrid Schegk and Didier Vancutsem	HSWT (D1) / D1.310
15 30	Coffee break		HSWT (D1) / Foyer
16 00	LE:NOTRE Student Competition - Award ceremony	Moderation: Ellen Fetzer	HSWT (D1) / D1.302
18 00	LLF Poster Session, Reception with buffet and Sentilinga Jazz Quartet		HSWT (D1) / Foyer

Day 5 - Saturday, 20th of May

Time	Activities and/or topics	Actors	Place / Room
09 00	Presentations of working groups / Plenary session, part 1 with 2 working groups (cross cutting themes included); each group 45 minutes including discussions)	Introduction and moderation: Maria Beatrice Andreucci, presentations: working group representatives	TUM (iGZW) / DG01
10 30	Coffee break		TUM (iGZW) / DG01
11 00	Presentations of working groups / Plenary session, part 2 with 2 working groups (cross cutting themes included); each group 45 minutes including discussions)	Introduction and moderation: Maria Beatrice Andreucci, presentations: working group representatives	TUM (iGZW) / DG01
12 30	Lunch		TUM (iGZW) / DG01
14 00	Outcome Statement Final discussions Pre-announcement LLF 2018 Good-bye	Moderation: Ellen Fetzer Elke Mertens, Erich Buhmann Nilgül Karadeniz, Ingrid Schegk, Stephan Pauleit	TUM (iGZW) / DG01
15 30	Coffee break		TUM (iGZW) / DG01
16 00	Farewell (possibility for a self-organized visit of the Sichtungsgarten at the HSWT: open until 18 00)		

Planned Excursion Route



Route "Heritage and Identities" (source: topographical map of Munich's North, Jonas Würtele)