

## 6th LE:NOTRE Landscape Forum 2017

16th - 20th of May in Freising-Weihenstephan, Germany

### Inclusive Landscapes in the Region of Munich

## INTERNATIONAL STUDENT COMPETITION

### All Inclusive!? Upgrading Munich's Northern Fringe

*Green-Blue (Infra-)Structure between the city of Dachau and Munich Airport*

#### 1. GENERAL PRESENTATION

The International Student Competition is part of the 6th Landscape Forum of the LE:NOTRE Institute. This event will be hosted by the Technical University of Munich (TUM) and the Weihenstephan-Triesdorf University of Applied Sciences (HSWT) in Freising. The LE:NOTRE Student competition is supported by the two universities as well as by the Bavarian branch of the German Association of Landscape Architects (bdla).

The LE:NOTRE Landscape Forum has worked on different focus areas so far, applied to relevant urban or peri-urban sites. For the 6th Landscape Forum in Freising the overall focus will be on the peri-urban landscape in the North of Munich. This landscape is shaped by spatial, social and cultural dynamics related to the following focus areas:

- Urban Growth and peri-urban sprawl
- Rural fringe
- Sustainable tourism and recreation
- Heritage and identities
- Landscape perception (cross-cutting theme)
- Landscape democracy (cross-cutting theme)

The title and general approach of both the forum and the competition is *"Inclusive Landscapes"*. This concept is based on the following hypotheses:

*"Inclusive Landscapes"* are accessible for everyone, offering space for collaborative, socially inclusive processes, participation and interaction for all people, thus contributing to equity and environmental justice.

As a planning and design concept *"Inclusive Landscapes"* incorporates the knowledge and needs of everyone, balances interests of different stakeholders, and in particular considers those groups that have difficulties in accessing information and articulating their interests. The concept of *"Inclusive Landscapes"* can be applied to any kind of landscape – such as urban, rural, tourism, or heritage landscapes.

This landscape forum will exemplify the concept of *"Inclusive Landscapes"* in the region of Munich North with new approaches. These approaches will be transferable to other metropolitan areas across Europe.

[1]

## 2. ORGANIZING COMMITTEE

- LE:NOTRE Institute Board: Dr.-Ing. Ellen Fetzer
- Technical University of Munich (TUM), School of Life Sciences Weihenstephan, Chair for Strategic Landscape Planning and Management: Werner Rolf
- Weihenstephan-Triesdorf University of Applied Sciences (HSWT), Department of Landscape Architecture: Prof. Ingrid Schegk, Stefanie Gruber
- Association of German Landscape Architects (bdla), Bavarian branch: Ursela Schwertl

## 3. AIM OF THE COMPETITION

The LE:NOTRE International Student Competition aims to support integrated and holistic (“*inclusive*”) approaches to the urban and peri-urban landscape through multidisciplinary student teams elaborating planning and design proposals at various scales. The role of the urban periphery within a city’s overall dynamic needs to be rethought. The periphery should recover its essence and identity and become reconnected to the city’s spatial, social and cultural profile. Participating students will explore those peripheral landscapes and reflect upon the complex processes in this specific landscape type in relation to the city’s context and dynamics. The proposals should be developed around the following aspects. Participants are invited to interpret those and to set individual emphases:

- Conceptual and procedural translation of the overall topic ‘inclusive landscapes’ to the respective territorial context
- Sustainable visions for the relation of built tissue, open space and landscape elements
- Proposals for improved connectivity at different scale levels, sustainable mobility solutions
- Development of green and blue infrastructure elements based on a conceptual framework
- Enhancement of ecological functions
- Proposals for the sustainable development of tourism and leisure areas
- Visions for a better dialogue between cultural heritage and the dynamics of urban identities in a pluralistic society

**Focus areas:** Taking the aspects mentioned above into account, the competition participants are invited to develop their concepts around one of the following themes. These topics are identical to the general structure of the landscape forum:

- *Urban Growth and peri-urban sprawl: Inclusive Urban Green Infrastructure in Munich*
- *Rural fringe: Inclusive agriculture and local foodscapes in the rural area*
- *Inclusive local and regional recreation and tourism*
- *Heritage and identities: Recovering landscape biography between the rivers Isar and Amper*
- *Landscape perception: Landscapes as perceived by people - Exploring the potential of aesthetic practice to the understanding of landscape*
- *Landscape democracy: Challenging diversity - manifold interests, driving forces and win-win-potentials*

[2]

#### 4. THEME: GREEN-BLUE (INFRA-)STRUCTURE IN AN INCLUSIVE LANDSCAPE

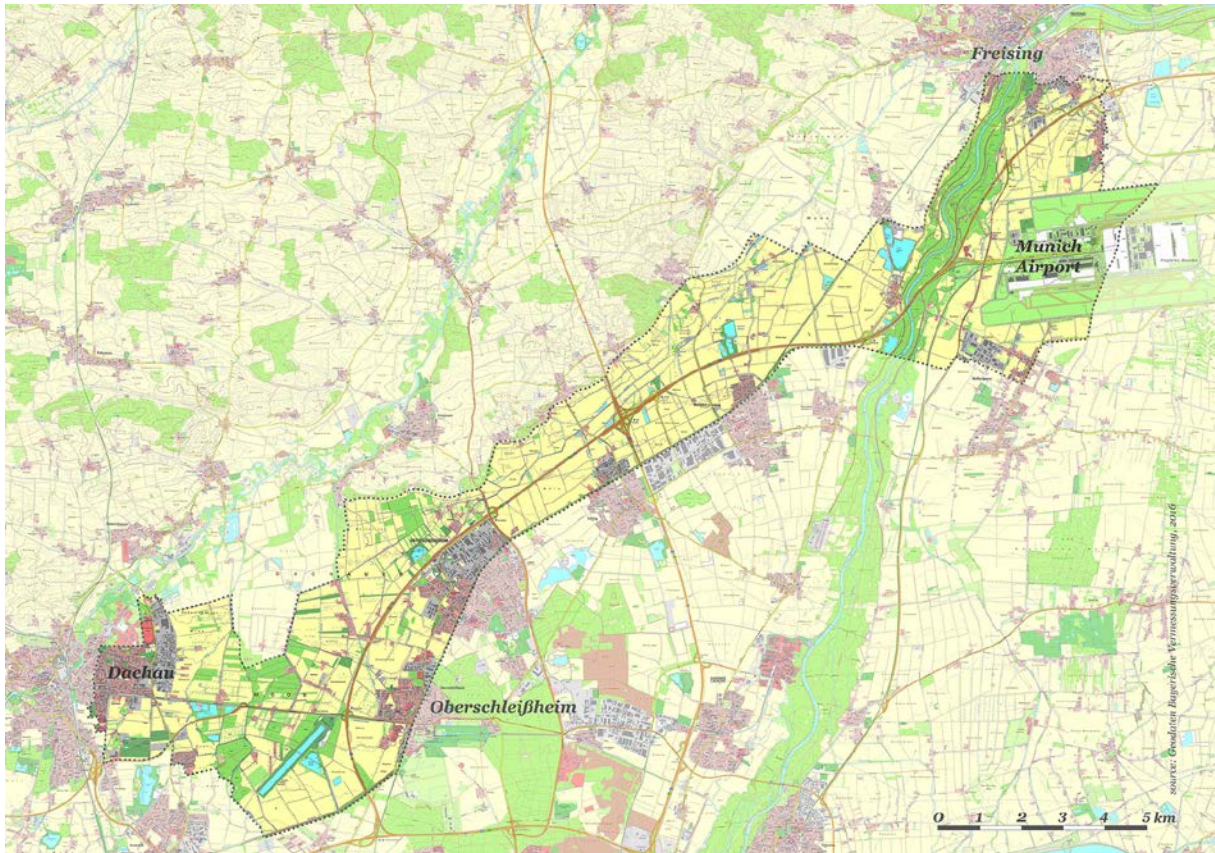


Fig. 1: Competition corridor (source: Geodaten Bayerische Vermessungsverwaltung, 2016)

The competition focuses on the corridor between the city of Dachau in the West and Munich Airport in the East. This corridor along the historic canal (Dachau-Schleißheimer-Kanal) and the motorway/autobahn A 92 can be seen as a part of Munich's northern city edge. It follows the moorland-belt between 'Dachauer Moos' and 'Freisinger Moos' and goes along the natural border between the large Munich gravel plain in the south-east and the geologically older tertiary hilly country in the North-West (fig. 1).

Within this landscape water plays an important role: The Dachau-Schleißheimer-Canal in the south-western part of the competition corridor (fig.1) is part of the baroque system of canals and visual axes created during the 17<sup>th</sup> and 18<sup>th</sup> century. Today, the canal is accompanied by the highly frequented federal highway (Bundesstraße) B 471. In the south of this axis, close to the crossing point of B 471 and the motorway A 92, the more than 2 km long water body of the Olympic rowing regatta facility is located. Its orientation follows the direction of the ground water stream.

Furthermore, the landscape corridor along the motorway is characterised by many blue spots: Most of them are gravel-pits and quarry ponds, still in use for gravel excavation or restored as recreation areas. In the East the ribbon of the river Isar with its natural riparian

[3]



forests crosses the corridor. Additionally many different brooks, ditches and smaller rivers are following or traversing the zone.

Otherwise, the competition zone represents a typical peri-urban infrastructure landscape with motorways and junctions, the railway line parallel to the A 92, high frequented streets and traffic nodes as well as the Munich Airport area in the eastern part of the corridor.

The landscape corridor is thus marked by strong contrasts at various levels: functional, ecological, socio-cultural, aesthetic, heritage, economic and many more. It represents a 'transect' touching different types of landscapes and crossing infrastructural and cultural sites and elements. This transect can function as a landscape laboratory for testing the inclusive approach. Within the western and eastern part of this corridor three focus areas are representing both the challenges and the potentials of the peri-urban landscape:

## 1. The eastern city edge and entrance of Dachau along the Schleißheimer Straße

Here, many different topics are requiring a spatial landscape design concept:

- the function as the eastern entrance to the city and access to the Concentration Camp Memorial
- the field of conflict between 'good' and 'bad' heritage, e.g. between the famous artists' colony in the moorland of Dachau and the site of the former concentration camp
- the Dachau-Schleißheimer-Canal as distinctive and protected cultural element within the visual appearance of the landscape; the canal is partly tubed, the restoration has to be considered
- the surrounding landscape, in particular the remaining parts of the low moor landscape which have high importance for natural protection, e.g. as habitat of the endangered dragonfly species *Coenagrion mercuriale*
- implementation of the Würm river with its potentials for recreation
- high pressure by traffic and urban developments, e.g. the expansion of existing industrial areas.

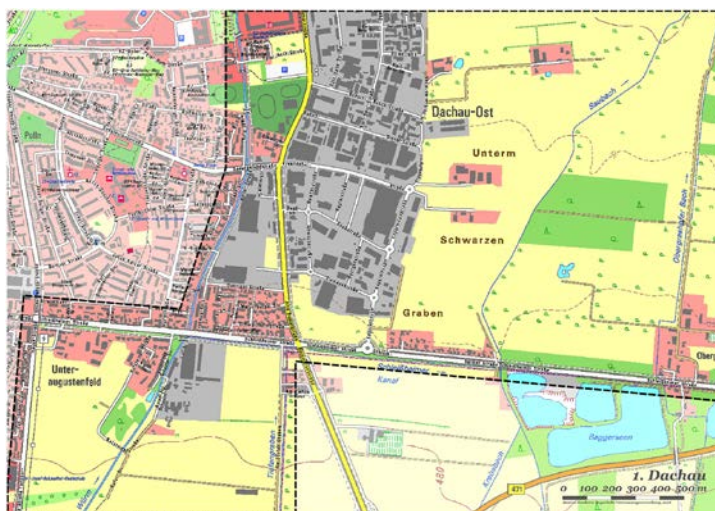


Fig. 2: Focus area 1: Eastern city edge and entrance of Dachau

[4]

## 2. The park zone around the Olympic rowing regatta course Oberschleißheim

The Olympic rowing regatta course with its more than 2 km long artificial lake in the south of the Dachau-Schleißheimer-Canal was built for the Olympic Games 1972 in Munich. It represents a piece of post-war heritage.

Because of the expensive maintenance and the necessity of renovation very controversial future developments are discussed:

- extensive demolition of the built parts and initiate alternative developments
- placing the ensemble under monument protection (like the Olympic stadium and park in Munich)
- preserving and renovating the area as a national and international important sports park, in particular for rowing, triathlon, long distance swimming etc.
- developing the park as an event area with potentials for commercial investments and uses
- strengthening nature protection strategies; in the surrounding moor landscape different areas are protected (NSG)
- combination of different strategies.



Fig. 3: Focus area 2: Olympic rowing regatta course

[5]

### 3. The edge zone and western entrance to the Munich Airport area

The Airport, located in the flat area of the 'Erdinger Moos' since 1992, is one of the most important transport hubs in Germany. It has more than 40 million passengers per year, more than 30.000 people are working on the airport campus. Topics of this area are:

- sustainable development of the airport area as transport hub, e.g. strengthening innovative transport systems, public transport and bike paths, connection to the cities in the neighbourhood (Hallbergmoos, Attaching, Freising etc.) and the river Isar, locating space for variable form of mobility (cycling routes, alternative paths for e-mobility/very small vehicles)
- requirements for temporary and permanent housing close to the airport, flexible livings spaces (cooperatives, mobile homes, small homes)
- validation the green zones/open spaces located at the boundaries to the adjacent districts (Landkreise)
- agricultural landscape and sustainable food production/food supply related to the airport
- visual appearance of the Airport as part of the peri-urban cultural landscape.

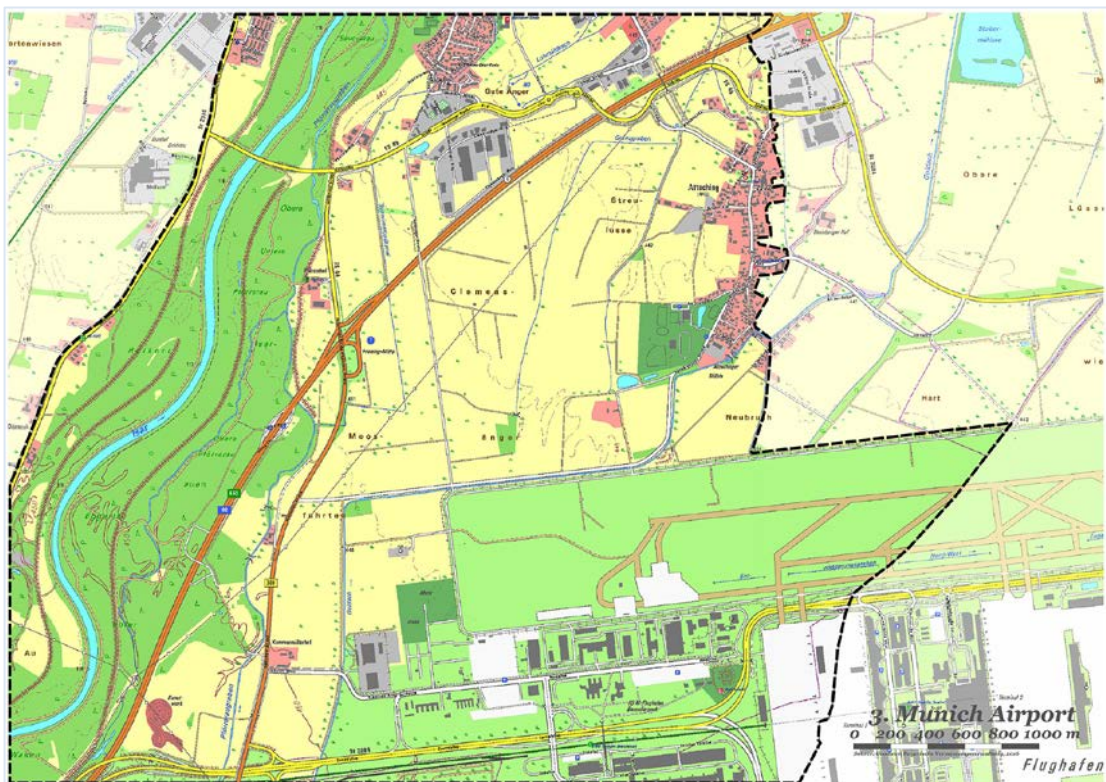


Fig. 4: Focus area 3: Western edge and entrance to the Munich Airport area



## 5. ASSIGNMENT

Participants are asked to elaborate the following contents:

### A. Landscape Concept

The Landscape Concept should cover the area of the corridor highlighted in figure 1 and show the envisioned relationship of the corridor with the wider urban and peri-urban landscape of Munich. The working and presentation scale is 1:25:000.

Aspects to be covered:

- landscape elements and their enhancement,
- functional zones including natural areas and open space typologies,
- connectivity, sustainable traffic,
- stakeholder and target group analysis related to the 'inclusive landscapes' approach.

The overall plan 1:25 000 should be put under a catchy title or slogan, characterising the specific approach. It can ideally be combined with conceptual diagrams (i.e. spatial and functional layers, bird eye view sketches, historical analysis, perspective sketches, a process model how to implement the approach etc.). Explanatory notes should be short and concise. Text information will be provided on one A4 (see point C)

### B. Spatial Test-Design

The second contribution should show a spatial test-design for one of the three detailing areas (Eastern entrance/Schleißheimer Straße Dachau, Regatta Park, western entrance/edge zone Munich Airport, see fig. 1). The working and presentation scale should be 1:2.500 for detailing areas 1 and 2; and 1:5.000 for detailing area 3 (airport).

Aspects to be covered:

- spatial composition with built elements and open space typologies as well as potential areas for future developments
- additional information on functionality, traffic and connectivity provided with conceptual diagrams,
- clear conceptual approach to inclusiveness based on the stakeholder and target groups analysis
- visualisations (hand drawn or computer-based) and short explanatory notes.

The organising committee is looking for reflexive and innovative approaches, giving value to the identity of the place and showing a strategy for the project's realisation. The overall topic of 'inclusive landscapes' needs to be visible in analysis, concept, planning and design.

### C. Written project description

The overall concept and rationale of the project has to be explained in a short text on one A4 page.

[7]

## 6. REGISTRATION

The full set of background documents and plans is accessible after online registration. Registered participants will receive a neutral login ID which will also be used for submitting the proposals in an anonymous way. This ID needs to be shown on all submitted posters.

Please register under the following link:

[https://ilias.hfwu.de/goto.php?target=cat\\_16243&client\\_id=hfwu&lang=en](https://ilias.hfwu.de/goto.php?target=cat_16243&client_id=hfwu&lang=en)

## 7. PARTICIPANTS

The competition is open to all students of landscape architecture/planning, urban/regional planning and architecture as well as related disciplines such as arts, geography, agricultural sciences, dendrology, economics, environmental psychology, forestry, hydrology and water management, IT, archaeology, ecology, social anthropology, sociology or tourism. Levels of study may be bachelor or master.

Both individual and group submissions will be accepted. Each student or group is allowed only one entry. The maximum group size is limited to eight contributors.

Broad interdisciplinary submissions are welcome. However, the design must still focus on the configuration of the landscape.

## 8. QUESTIONS AND ANSWERS

The organising committee recommends visiting the site during the 43<sup>rd</sup> calendar week. The site visits are self-organised. A first information and feedback colloquium will be held on Friday, 28<sup>th</sup> of October, 1 pm on site at Weihenstephan-Triesdorf University (HSWT). A second colloquium in the form of a web conference will be held on Monday, 21<sup>st</sup> of November, at 6 pm CET. Registered participants will be able to submit questions for the colloquium in advance. In addition, registered participants will have access to an online forum for ongoing questions and answers.

## 9. AWARDS

The LE:NOTRE Institute will award four prizes and select another three submissions for being honourably mentioned.

1 <sup>st</sup> price:	1.500,-- Euro
2 <sup>nd</sup> price:	1.000,-- Euro
3 <sup>rd</sup> price:	750,-- Euro
4 <sup>th</sup> price:	500,-- Euro

Honourable mentions: 3 x 250,-- Euro

The award winners will get the possibility to present their project at the LE:NOTRE Landscape Forum 2017 to a group of international professionals and local stakeholders.

[8]



## 10. SUBMISSION REQUIREMENTS

### Poster size and format

The submitted project must comprise three (3) A0 posters (1189mm x 841mm), landscape format:

1. Landscape concept (5.A), scale 1:25.000, additional diagrams, analytical graphics, sketches or cross sections as necessary to illustrate the proposed concept
2. Test-design for one of the chosen detailing areas (5.B), scale 1:2.500 for detailing areas 1 and 2, scale 1:5.000 for detailing area 3 (airport)
3. Free layout for additional visualisations according to individual decisions like diagrams and schemes, cross sections, models and 3D drawings, details and visualisations as necessary to illustrate the test-design proposed. Both hand-drawn and computer-based visualisations are welcome.

The submission format is PDF. The submission is only online and includes:

- 3 PDF files - 1 for each of the A0 posters
- 1 PDF file with the Project Description
- 1 PDF file with the Declaration Form

Individual PDF files should not exceed 50 MB, minimum resolution is 200 DPI.

It is the responsibility of the participants to guarantee that the final images and files are in the size and resolution adequate to their reading. The entrants must ensure that all images, photographs and other material taken from other sources are correctly accredited. All files must be completed in English. Registered participants will receive further information concerning the electronic submission.

### Submission ID

Each participant or participating team will receive a unique and anonymous ID upon registration. This ID needs to be put into the top left corner of each submitted poster (size and format of ID: Arial, font 72). The posters must be numbered to be seen in the right order during the selection.

### Written information

Entrants must also submit a brief description (250 words maximum) in a separate PDF file, identified only by the anonymous ID (DO NOT include the names of the students or the name of the university). This description must be a clear and concise text explaining the key aspects shown in the concept design proposal. The text is to be left aligned (left unjustified) and double spaced, in Arial, font 12.

### Competition language

All submissions must be entirely in English, which is the official language of the LE:NOTRE Landscape Forum. Local names and specific conditions of each country may be included in the local language. This is to ensure that all material can be understood by the jury, who conduct their reviews in English.

[9]

## **Anonymity and Protocol**

All plans are supposed to bear the anonymous ID number given to each registered participant in the top left corner (Arial, font 72).

The following naming convention applies to all submitted files: Your ID\_1.pdf, Your ID\_2.pdf etc.

An additional PDF file, with the complete declaration form must be included. This must be fully completed. The declaration form will be submitted separately from the project PDF files, and will only be consulted by the jury once the final deliberations are completed.

## **11. COMPETITION RULES**

### **Participation in the competition implies acceptance of the competition rules.**

- Proposals received after the deadline (see pt. 14) will not be admitted.
- Presentations that do not include the declaration form will not be admitted.
- Submissions shall only be accepted if submitted online in the way described above
- A selection of the works submitted will be shown in an exhibition during the 6th LE:NOTRE Landscape Forum 2017 in Freising and may be also be exhibited elsewhere at the discretion of the Local Organizing Committee.
- The Local Organizing Committee retains the right of duplication or publication of any or all the material submitted to the competition, and there shall be no obligation whatsoever to the entrants, beyond acknowledging the authorship of the works exhibited or published.
- Submissions that have been published in any way prior to the notification of the jury final decision will not be considered.
- The jury shall preside over the competition and is the sole arbiter at all levels until the final awarding of prizes. All decisions of the jury are final.
- The winners of the prizes and honourable mentions shall be announced by the Chair of the 6<sup>th</sup> LE:NOTRE Landscape Forum 2017 in Freising, upon recommendation of the jury.
- All inquiries must be directed to the Competition organising committee. Please read carefully through the brief and instructions, as all required information should be contained there. Jury member are not to be addressed in any way in relation to the competition.
- Participants will need to submit a declaration confirming that competition data and background information will not be used for other purposes.

## **12. JURY MEMBERS**

The competition jury will be composed of local and international experts in the field of landscape architecture, urban design and infrastructure planning and regional development. We are in the process of composing the jury. Updates will be announced as soon as possible.

[10]

## 13. EVALUATION CRITERIA

The projects submitted will be evaluated according to the following criteria:

- the degree of connection of the proposed vision to the explored context
- interpretation and translation of the overall theme 'inclusive landscapes'
- innovation and creativity
- conceptual expression and clarity
- methodological clarity and consistency
- the extent to which an holistic approach has been achieved
- visual communication

## 14. SCHEDULE AND DEADLINES

Official start of the working period: October 1<sup>st</sup>, 2016

On site visit recommended: 24<sup>th</sup> – 30<sup>th</sup> of October (43<sup>rd</sup> calendar week)

First information and feedback colloquium: Friday, 28<sup>th</sup> of October, 1pm at Weihenstephan-Triesdorf University (HSWT), Am Hofgarten 10, 85354 Freising building A3, room A3.406, additional registration for this colloquium is necessary.

Please register for the on-site colloquium via this link:

[https://ilias.hfwu.de/goto.php?target=svy\\_16314&client\\_id=hfwu](https://ilias.hfwu.de/goto.php?target=svy_16314&client_id=hfwu)

Online feedback colloquium:	November 21 <sup>st</sup> , 2016, at 6pm CET
Latest registration date:	February 1st, 2017
Submission deadline:	February 26 <sup>th</sup> , 2017, at midnight CET
Jury selection:	March 2017
Award Ceremony in Freising	May 19th, 2017

## 15. CONTACT INFORMATION

For more information about the 6th LE:NOTRE Landscape Forum Freising 2017 and participation at the student competition, please visit the website:

<http://forum.ln-institute.org/student-competition-llf-2017>

**Registration link:**

[https://ilias.hfwu.de/goto.php?target=cat\\_16243&client\\_id=hfwu&lang=en](https://ilias.hfwu.de/goto.php?target=cat_16243&client_id=hfwu&lang=en)

Basic maps and background materials will be accessible after registration.

Any further project communication will be possible for registered participants via an online forum.