

COMMUNITY DESIGN: ORIGINS, APPROACHES, DIRECTIONS

Landscape and Democracy Online Seminar
November 24, 2015

PAULA HORRIGAN
Associate Professor of Landscape Architecture
Cornell University, USA

Presentation:

- 1. SETTING THE STAGE:
COMMUNITY DESIGN'S EMERGENCE**
- 2. DEFINING COMMUNITY DESIGN THROUGH CASES:**
 - HESTER'S MANTEO PROJECT: SACRED STRUCTURE
 - SHNEEKLOTH & SHIBLEY'S ROANOKE CHURCH PLACEMAKING PROJECT
 - BOONE'S CHAVIS PARK + CELLPHONE DIARIES PROJECT
- 3. LEARNING FROM THE CASES**
- 4. MOVING TOWARDS DEMOCRATIC
PROFESSIONALISM**

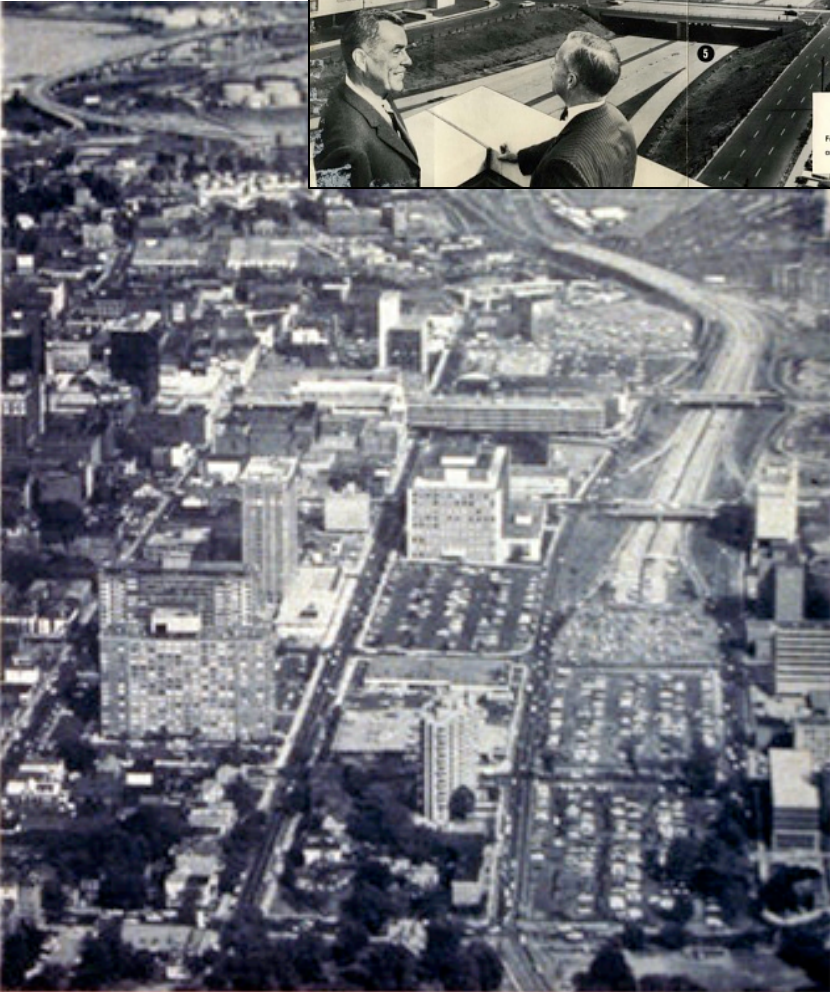
1960's to the present...

towards community + democratic design

- **Resistance:** Rejection of brutal modernism, standardization, meta-narratives, technical rationalism, urban renewal
- **Rights:** civil rights, disability rights, adult education (Freire), feminism, rights to the city, environmental justice
- **Movements:** historic preservation, environmental/ecological, sustainability: linking public health, social welfare and equity with environmental design
- **Environmental psychology and behavior research, place, place attachment and placemaking-** merging of social sciences w/ design knowledge;
- **Democracy:** community design, landscape democracy, ecological democracy, public interest design, social activist design
- **Crises:** displacement, conflict, climate change, migration, urbanization, disaster....

URBAN RENEWAL + Federal Highway Programs

Oak Street Neighborhood New Haven, CT: leveled 1957



A Dream Comes True!
 For a spectacular panorama view of the Oak Street area, open this fold and the fold inside the back cover.

BEFORE

The Oak Street area (above), a dense neighborhood, separated the Downtown Business District from the Yale-New Haven Medical Center. The Warner Square area (below) housed most of the city's Italian community.

AFTER

The Connector replacing Oak Street (above), terminates in a parking lot; high-income apartments and downtown stores replace houses. Route 191 cuts through Warner Square (below), and industry spreads into the neighborhood.



Penn Station, NYC circa 1963

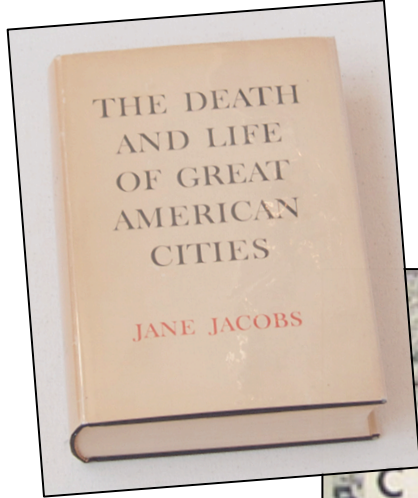
PHOTO COURTESY LIBRARY OF CONGRESS/CERVIN ROBINSON



1965: Demolition

Jane Jacobs

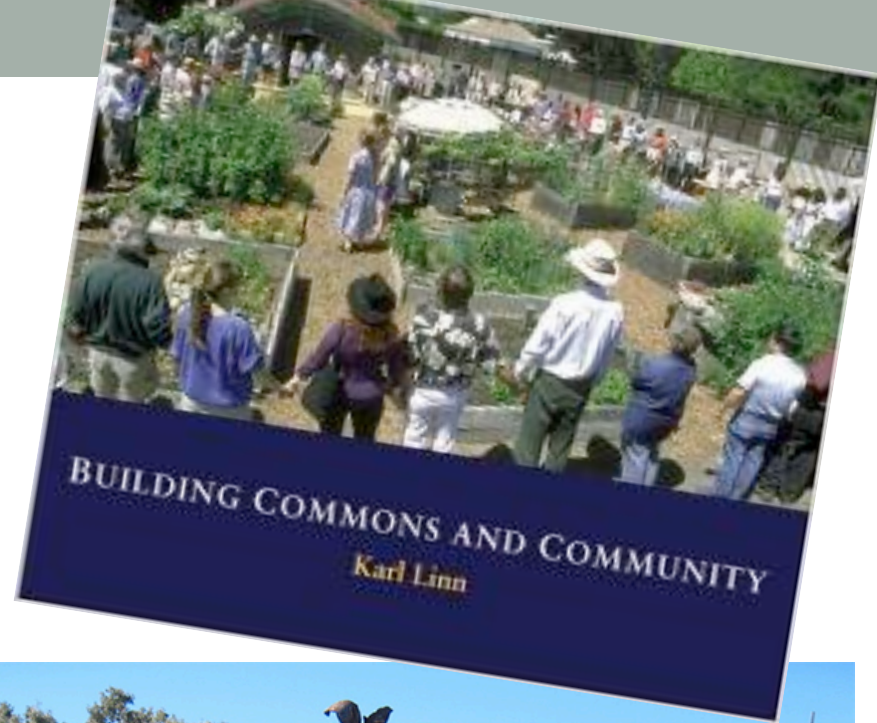
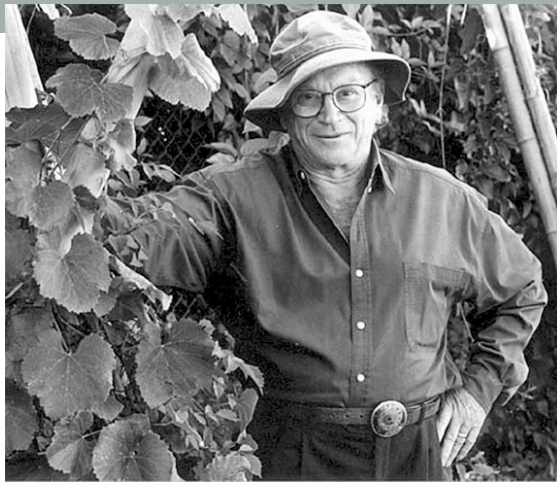
Urban activist and scholar who challenged Robert Moses and spearheaded citizen led coalition to fight and kill the Lower Manhattan Expressway and an urban renewal plan for her own neighborhood.



Planner Robert Moses' displaced 1/2 million people with NY highways... His Plan for NYC was rejected in 1964!



Karl Linn



- ***reclaim the commons***

- “neighborhood commons”
= a community right
- secure public lands for people
- guidelines for public lands for community gardens in city plans
- landscape + social justice
+ activism
- 1984: Architects/Designers/
Planners for Social
Responsibility (ADPSR)



Peralta Community Art Gardens and Commons

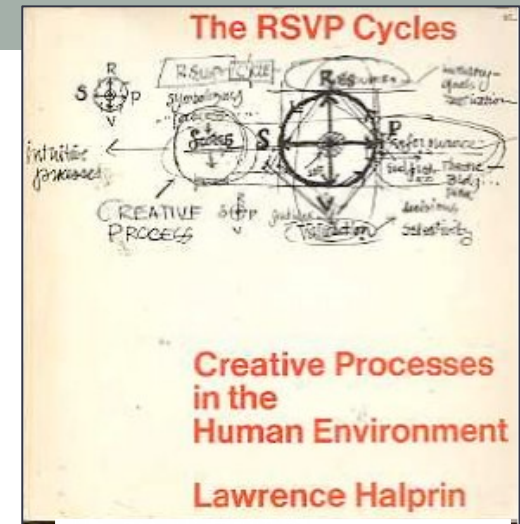
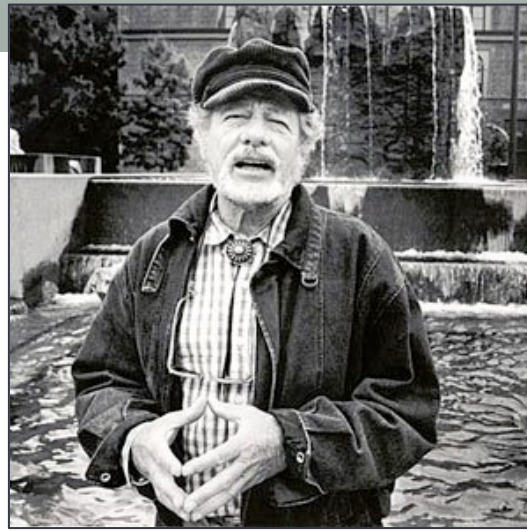
Lawrence Halprin

SCORES:

“the form of anything is latent in the process”

By involvement in process we all interact, our input is significant, visible, meaningful, useful, and no one point of view can hold us in thrall. Scores are not goal-oriented; they are hope oriented.

(p. 4. Halprin, 1969)



R

Resources which are what you have to work with. These include human and physical resources *and* their motivation and aims.

S

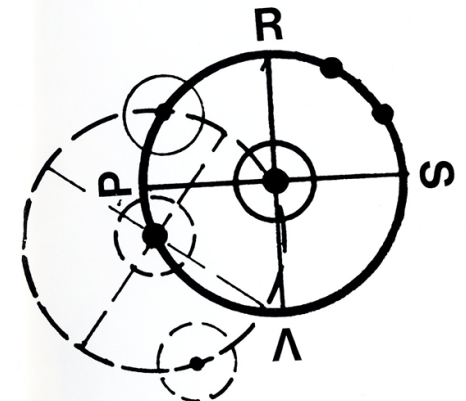
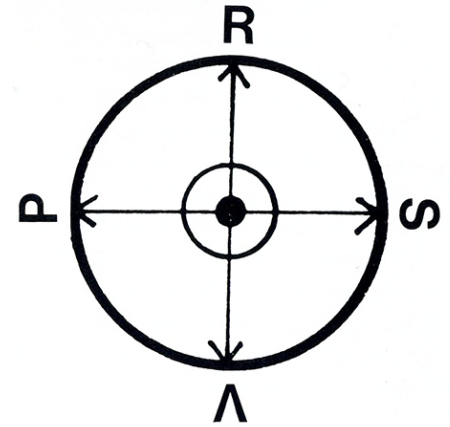
Scores which describe the process leading to the performance.

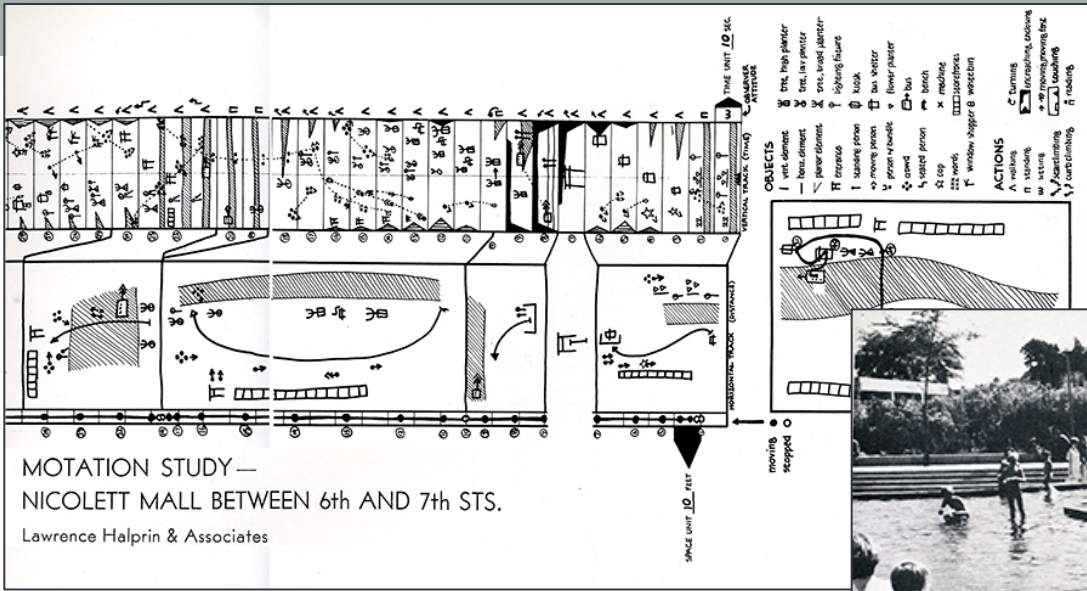
V

Valuation which analyzes the results of action and possible selectivity and decisions. The term “valuation” is one coined to suggest the action-oriented as well as the decision-oriented aspects of V in the cycle.

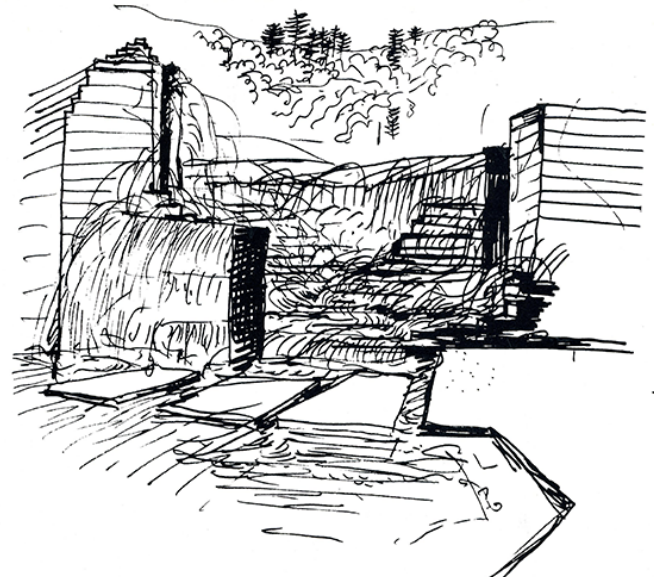
P

Performance which is the resultant of scores and is the “style” of the process.





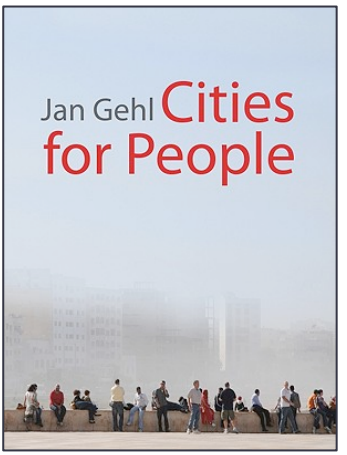
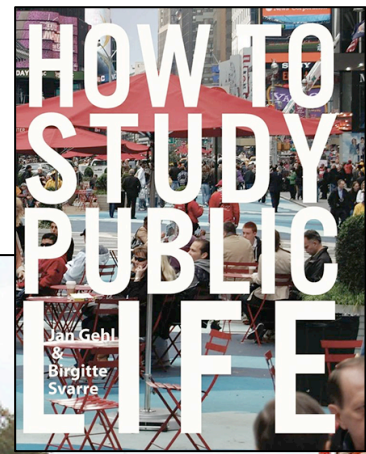
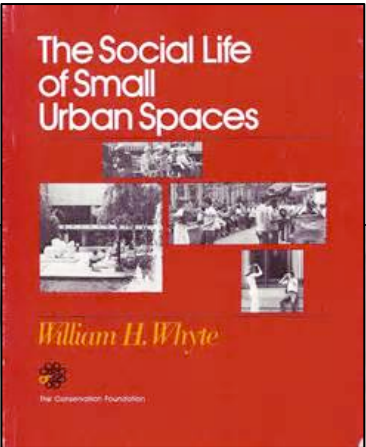
MOTATION STUDY —
NICOLETT MALL BETWEEN 6th AND 7th STS.
Lawrence Halprin & Associates



In the plaza there should be events.... sculpture shows - concerts - dance events with dancers all over AND arriving to center space from above down stairs around fountain -->

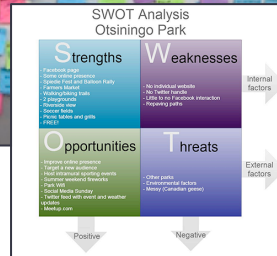
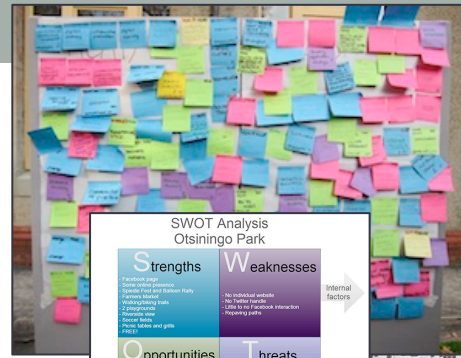
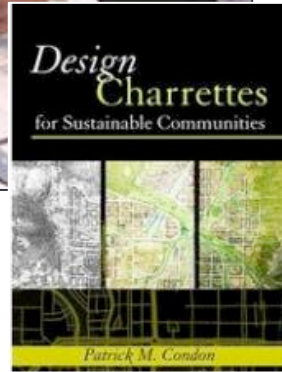
William H. Whyte Jan Gehl

1970's to.....present





Design Charrettes



Community Asset Mapping; SWOT Analysis, Surveys...

Community Build

you been?
Rainier Beach Urban Farm and Wetlands
5513 S. Cloverdale Street, Seattle

COME SHARE YOUR IDEAS!
Join us for the first community design review meeting on **Tuesday June 19, 2012 from 5:30 - 8:30 pm** at the 5513 S. Cloverdale Street, Seattle
...while you're there...take a farm and wetlands tour...tell us your vision for the project...and of course eat some delicious food!

Parking and Transportation Info:
No parking will be permitted on the site and street parking is limited on S. Cloverdale Street, so we recommend parking at Beer Shaux Park, Pritchard Beach, or taking the bus - #38, #39, #9 and #99 have stops near the project site.

Contact Info:
rbe@rainierfarm@gmail.com
check us out on facebook

Logan High School
Seattle Department of Neighborhoods

Community Visioning and Design Sessions

Community and Public Meetings

Olmsted Parkways Bicycle and Pedestrian Improvement Public Meetings

Louisville Metro Parks and Recreation will host a series of four public meetings to gather input on the preliminary Olmsted Parkways Shared Use Path plan, a bicycle/pedestrian improvement project.

The focus of the meetings will be the proposal for shared use paths and a road diet to allow bicycle lanes along Southern, Algonquin and Southwestern parkways.

October 22
6-8 p.m.
Southern Star Baptist Church
2304 Algonquin Parkway

October 28
6-8 p.m.
First Getsemane Baptist Church
1159 Algonquin Parkway

October 29
6-8 p.m.
Shawnee Golf Course clubhouse
460 Northwestern Parkway

November 4
6-8 p.m.
Ashland Avenue Firehouse
501 Ashland Avenue

Meetings will begin with an open house followed by a question and answer period.

The Olmsted Parkways master plan was developed with citizen input from seven public meetings, and outlines bicycle and pedestrian improvements for those parkways. Metro Parks is completing Phase 1 Design of the project, which includes Southern Parkway, Algonquin Parkway, and Southwestern Parkway from Gibson Lane to Broadway. The master plan is available online at the Metro Parks project website: louisville.gov/MetroParks/planninganddesign/projects/olmstedparkways.htm

METRO PARKS AND RECREATION
FREDERICK LAW OLMSTED PARKS





Places in the Making:

How placemaking builds places and communities

Today's placemaking represents a comeback for community. The iterative actions and collaborations inherent in the making of places nourish communities and empower people.⁵



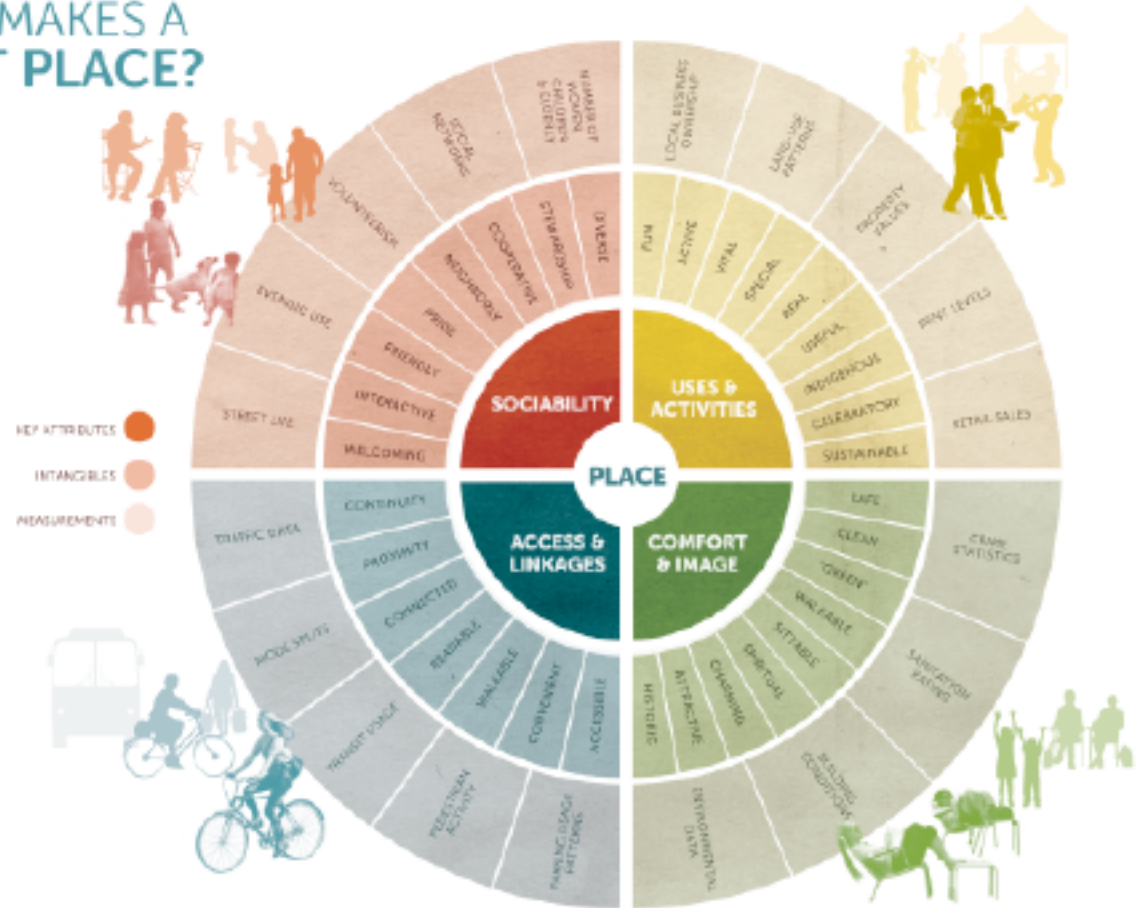
Massachusetts Institute of Technology

Creating Great Community Places...

11 elements

1. The Community Is the Expert
2. Create a Place, Not a Design
3. Look for Partners
4. You Can See a Lot Just By Observing
5. Have a Vision
6. Start with the Petunias: Lighter, Quicker, Cheaper
7. Triangulate
8. They Always Say "It Can't Be Done"
9. Form Supports Function
10. Money Is Not the Issue
11. You Are Never Finished

WHAT MAKES A GREAT PLACE?

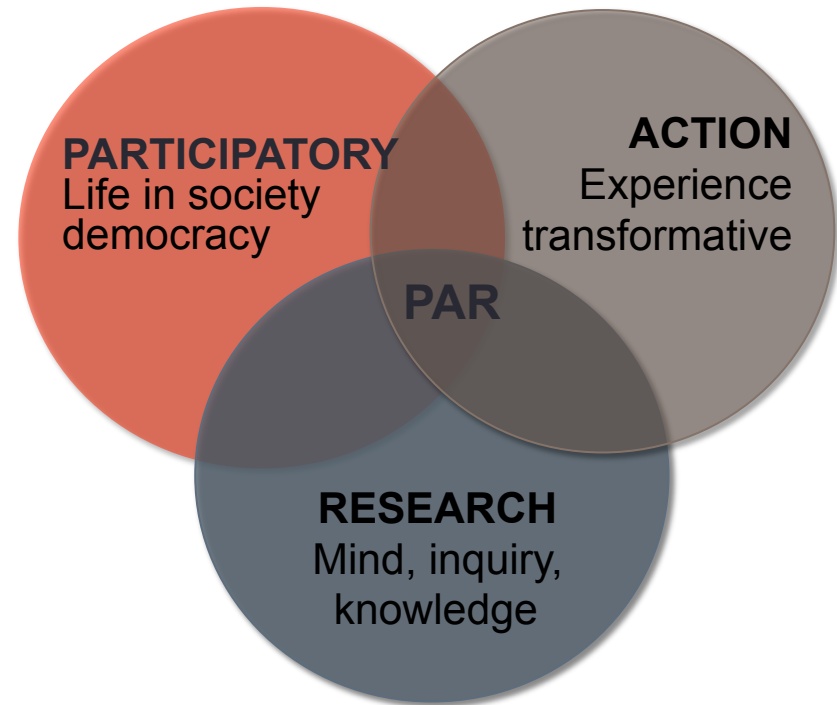
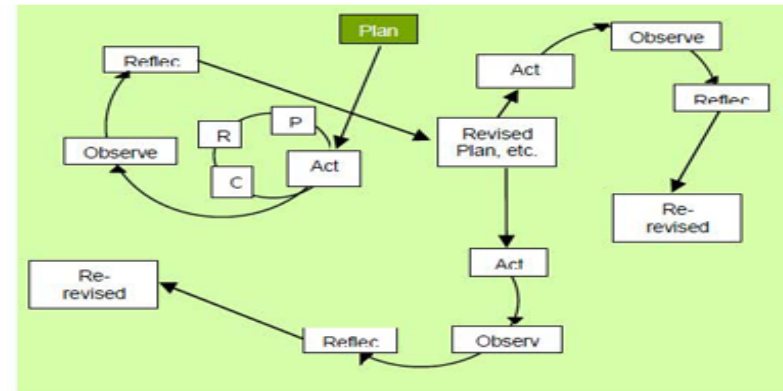


<http://www.pps.org>

PARTICIPATORY ACTION RESEARCH

- Engage people and multiple stakeholders
- Co-learning and co-creation
- Mobilize evidence, Meaningful Action
- Inquiry, action, reflection cycles
- Create an action learning system and process
- Dialogic; engages stakeholders and mediates differences through dialogue
- Democratization of knowledge making, process and action
- Grounded in real community needs and learning

inquire, reflect, revise, act



PLANNING TOOL EXCHANGE

<http://www.planningtoolexchange.org/>



ORTON FAMILY
FOUNDATION

Explore the Planning Tool Exchange

[Browse ▾](#)

Join us on PlanIt X - the Planning Tool Exchange - your online hub for the best tools, resources, and organizations in community planning. Find and contribute resources to help grow an information bank for communities. [Register ▾](#) or [log in ▾](#).

Contribute

Planning Tool Exchange

- Home
- Tools
- Projects
- Resources
- Organizations
- Browse
- Login

Featured Tool



HeartSpots ▾

This interactive place-based storytelling tool was created in Biddeford, ME. Stop at a HeartSpot in the downtown, call a city phone number, and tell a story about what makes that place special to you.

[MORE ▾](#)

Featured Project



(PARK)ing Day ▾

If you'd like to see more parks and less parking, take matters into your own hands! PARK(ing) Day projects help you do that, if only for a day. This international network and model will show you how to takeover a local parking space and turn it into a vibrant public space.

[MORE ▾](#)

Featured Resource



Community Heart & Soul™ Field Guide ▾

The Community Heart & Soul™ Field Guide is Orton Family Foundation's guide to its tested and proven method of community planning and development.

[MORE ▾](#)

Recent & Rated

- [Imagine Central Arkansas \(Project\) ▾](#)
- [Australian National University Union Court Revitalization \(Project\) ▾](#)
- [EngagingCities \(Resource\) ▾](#)
- [Denver Zoo Facility Master Plan \(Project\) ▾](#)
- [Community Remarks \(Tool\) ▾](#)
- [Nextdoor \(Tool\) ▾](#)
- [Peg Community Indicator System \(Tool\) ▾](#)
- [Youth Engagement & Voice \(Resource\) ▾](#)

Project and Organization Map



Map Satellite

Google

Map data ©2015 Google, INEGI Terms of Use

Environmental Justice

EJSCREEN

Home |

Report on Selected Place

Erase

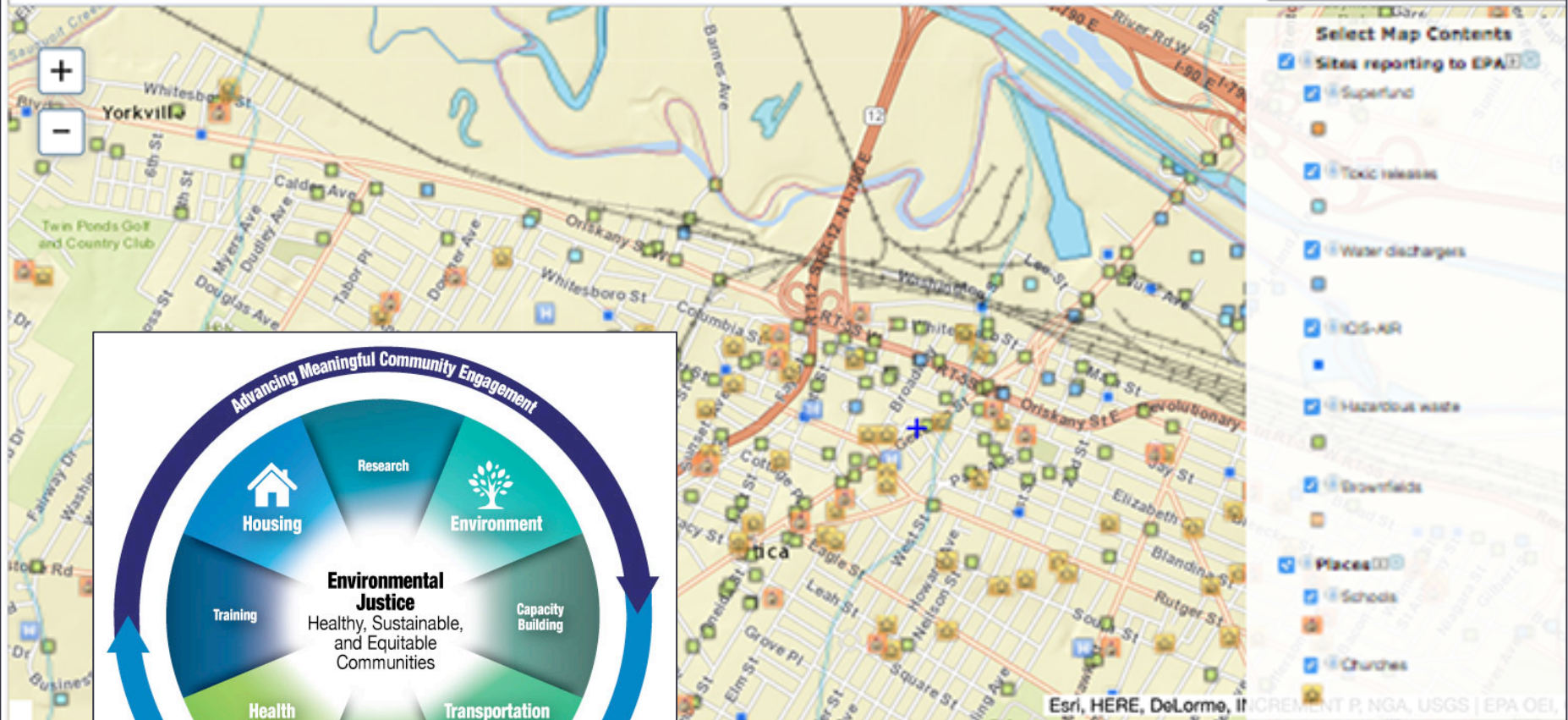
Map Data

Measure

Bookmarks

Basemap

Utica NY



<http://www3.epa.gov/environmentaljustice/sustainability/index.html>
<http://www2.epa.gov/ejscreen>

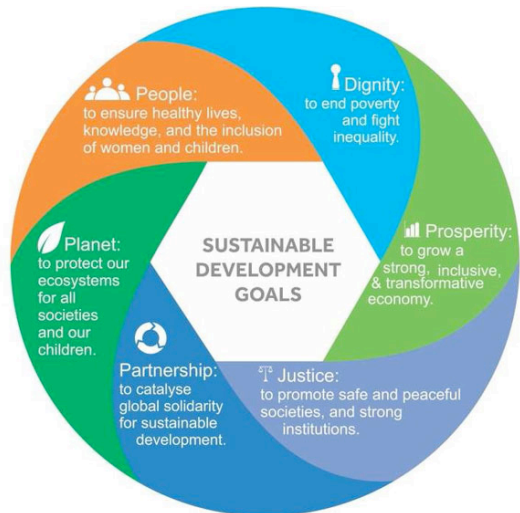
Sustainable Development

1987: "Sustainable Development is development that meets the needs of the present without compromising the ability of future generations to meet their own needs."

UN World Commission on Environment and Development (Brundtland Commission)



2030 AGENDA FOR SUSTAINABLE DEVELOPMENT



1960's community design centers

1960
Pratt Center for Community Development
Yale Building Project
Community Development Group NCState

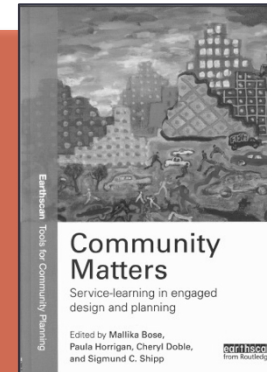
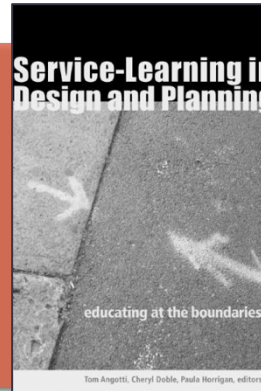
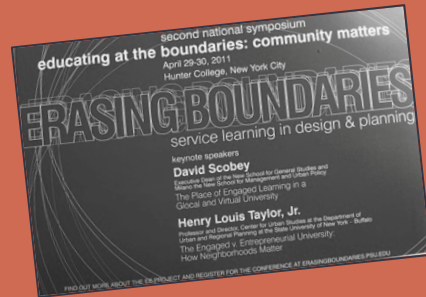


Building on the civic legacy of the city, faculty and students practice design activism through service-learning studios that involve marginalized social groups in design and planning of urban spaces.

1994

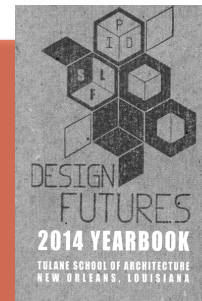
Detroit Collaborative Design Center
University of Detroit Mercy | School of Architecture

2008 erasing boundaries project



We train students to challenge the predominant patterns of environmental injustice and to become advocates of the voices and interests of marginalized communities and landscapes.

2013 design futures | PID



education

1960s

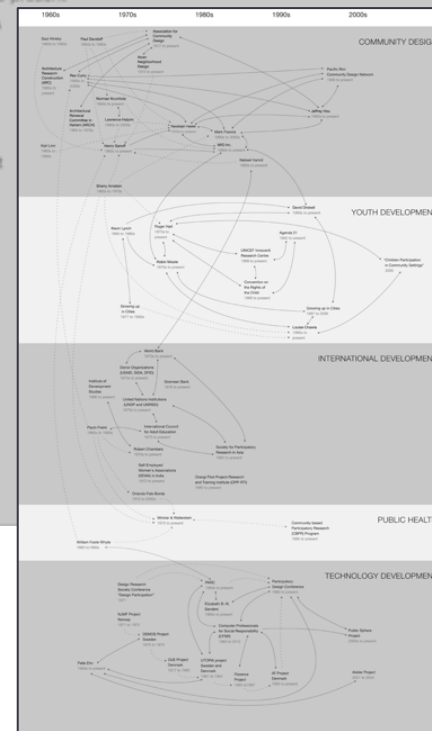
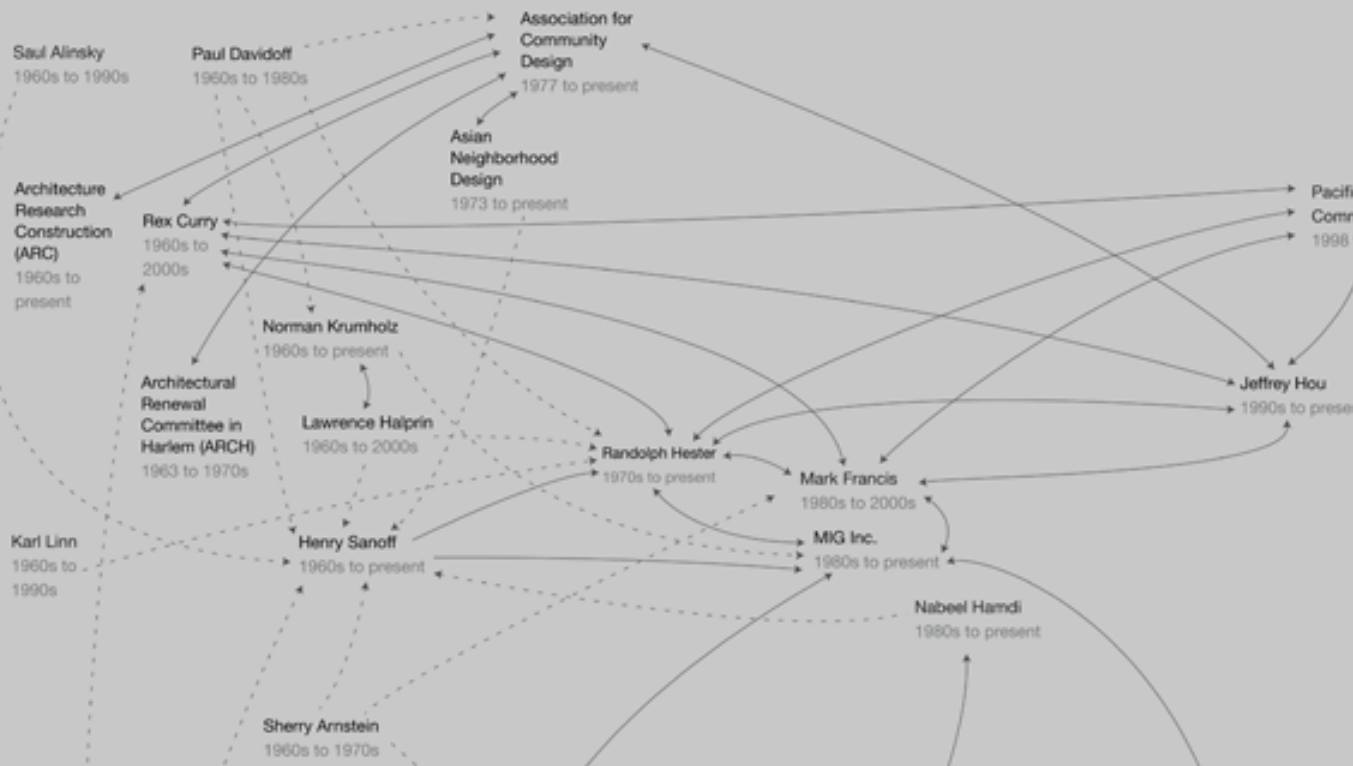
1970s

1980s

1990s

2000s

COMMUNITY DESIGN



UC Davis Center for Design in the Public Interest Evolution of Participatory Practices Project

EVOLUTION OF PARTICIPATORY PRACTICES / 5 disciplines / 50 years

The Evolution of Participatory Practices (EPP) Project, sponsored by the UC Davis Center for Design in the Public Interest, is a joint effort between researchers, design practitioners, and students to explore the evolution of participatory practices over time. A participatory practice is a range of practices enabling everyone who has a stake in the intervention to have a voice and influence in the decision making process.

The project examines key individuals, organizations, projects, writings, and social/cultural events across five decades and disciplines—community design, youth development, international development, public health, and technology development.

UC Davis Center for Design in the Public Interest (dipi)
Yohei Kato, Susan Verba, Sumayyah Ahmed,
Prerna Dudani and Sarah Perrault

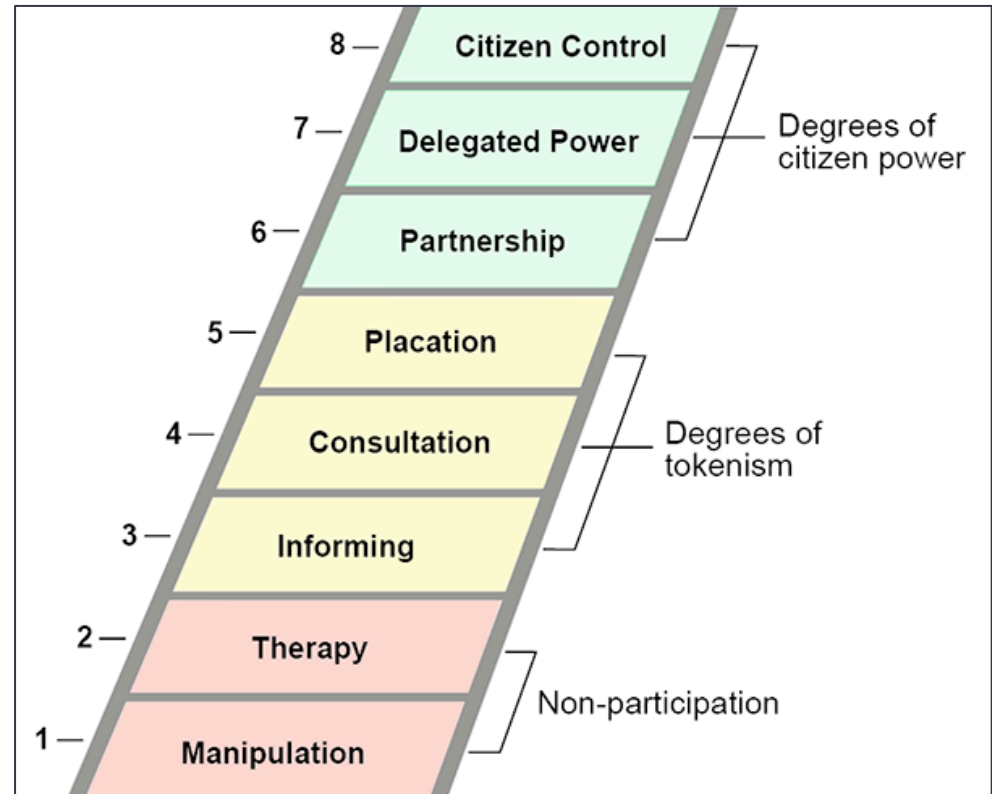
Community Design:

Purpose Matters

- Rooted in addressing and overcoming environmental injustices and inequities and equitably distributing environmental resources
- Community building, empowerment, belonging, education
- Local knowledge and professional knowledge valued, combined
- Inherently democratic
- Attends to:
 - people, place, culture
 - place meanings, sociability and needs of users
 - individual and community place attachment
 - community building and belonging
 - environmental design as place-making

Community Design: *Process and Participation Matters*

- Design *with* People, not for
- **Collective Inquiry, reflection and action through Participatory Processes** engaging professionals and non-professionals together
- **Co-learning, Co-creation:** transactive process, learn together, engage “all” in the making process
- **Foster relationships, reciprocity, mutual trust through process**
- **Community building and empowerment as central to process:** redistributing power, gaining individual and collective agency and self-esteem; building social capital, social fabric, democratic engagement



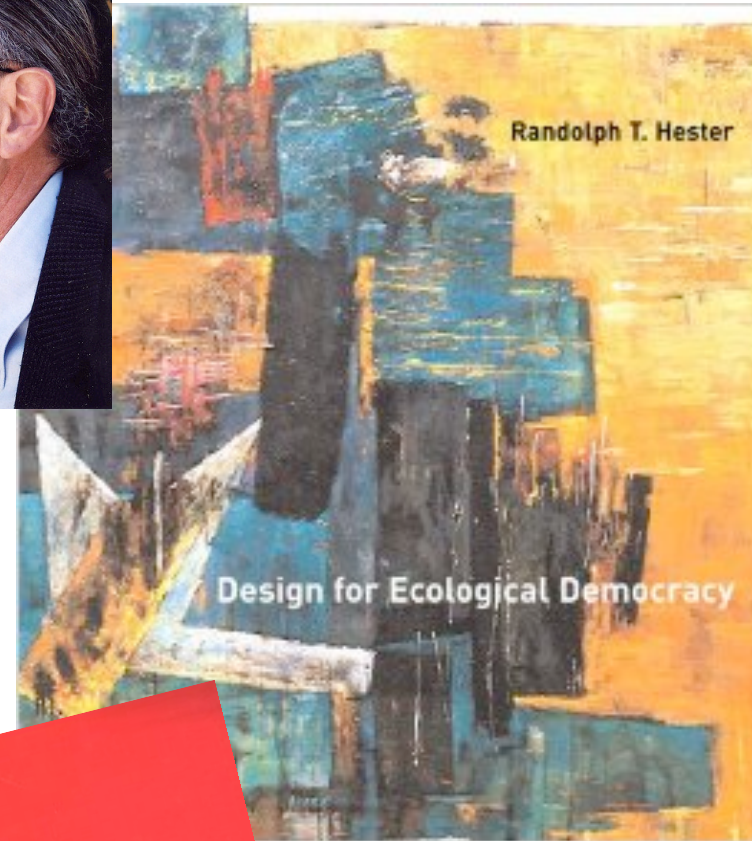
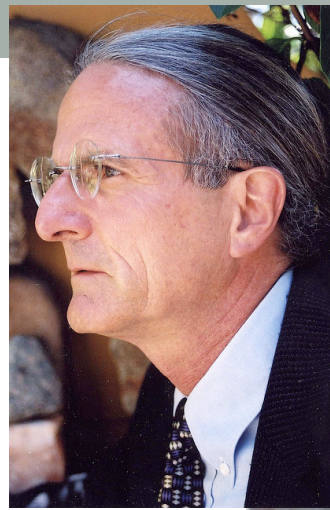
Sherry Arnstein's Ladder of Citizen Participation (1969)

community design in action?

making the case

Randolph Hester

- Educator + Activist + Designer
- Participatory Community Design knowledge through works, literature, education
- Methods| Process:
12-Step Community Design Process; “Sacred Structure”
- Environmental Justice
- **“Ecological Democracy”**



making the case....

MANTEO, NC

RANDY HESTER

30-YEAR COLLABORATION

LONG-TERM COMMITMENT TO PLACE



CHALLENGE THE PROGRAM



THIS

**holistic community
development process**



NOT THIS!
~~redesign the
village
waterfront~~

BEHAVIOR MAPPING + OBSERVATION

Record and reveal existing patterns of daily life and place attachments

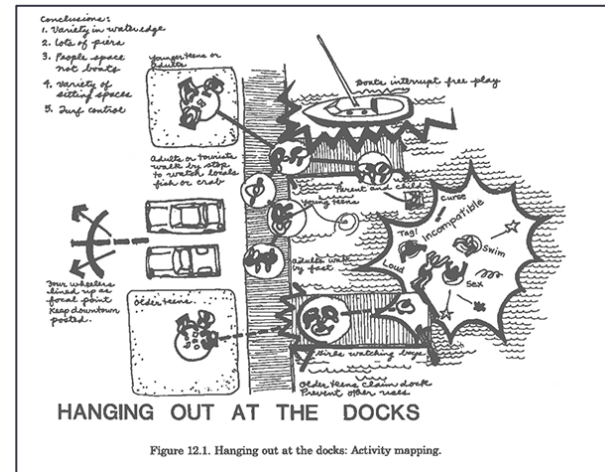
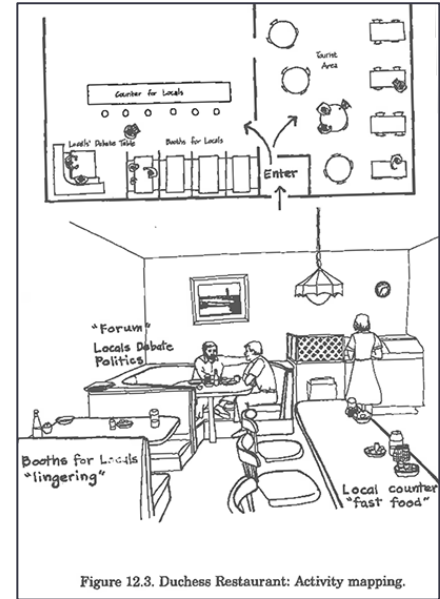
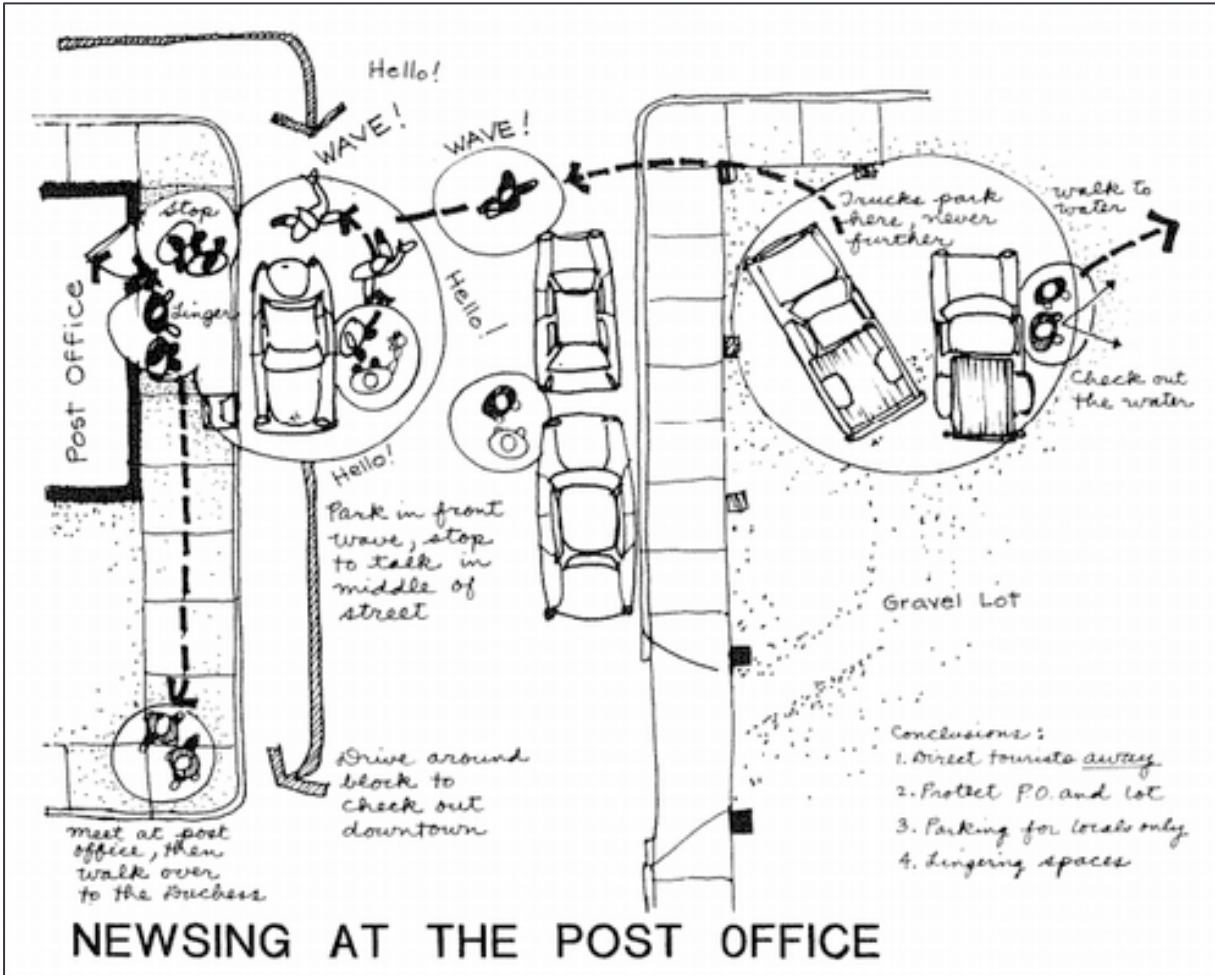
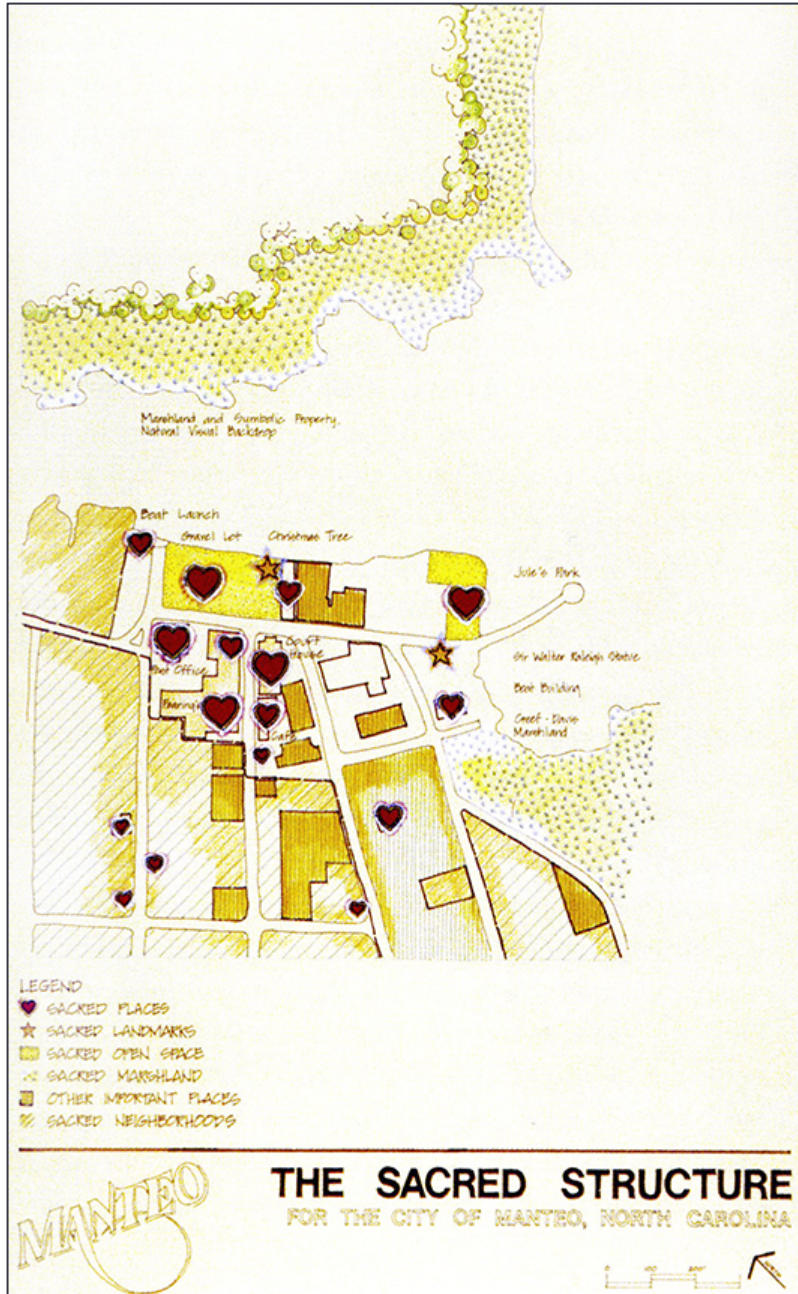


Figure 12.1. Hanging out at the docks: Activity mapping.



MAP AND SECURE the SACRED STRUCTURE

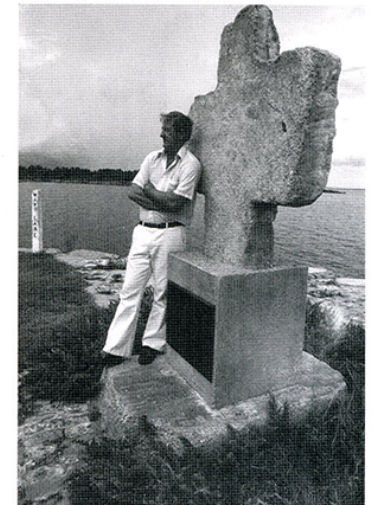
the community's valued social patterns and places



Town launch

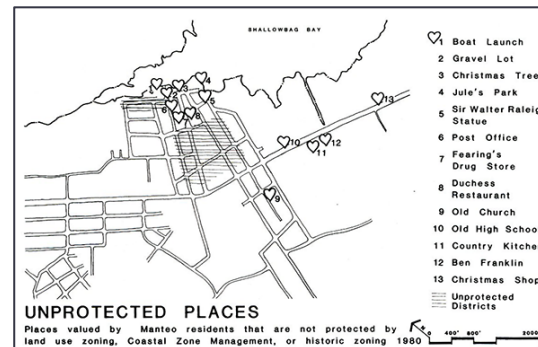
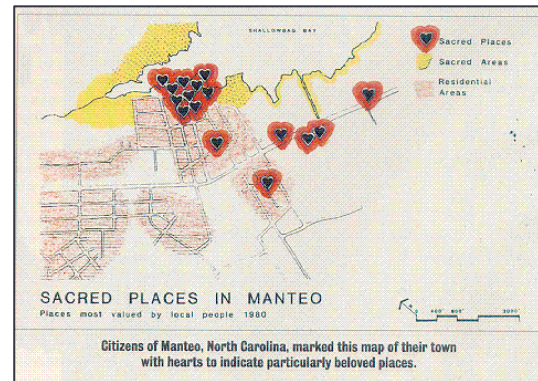


Duchess Restaurant

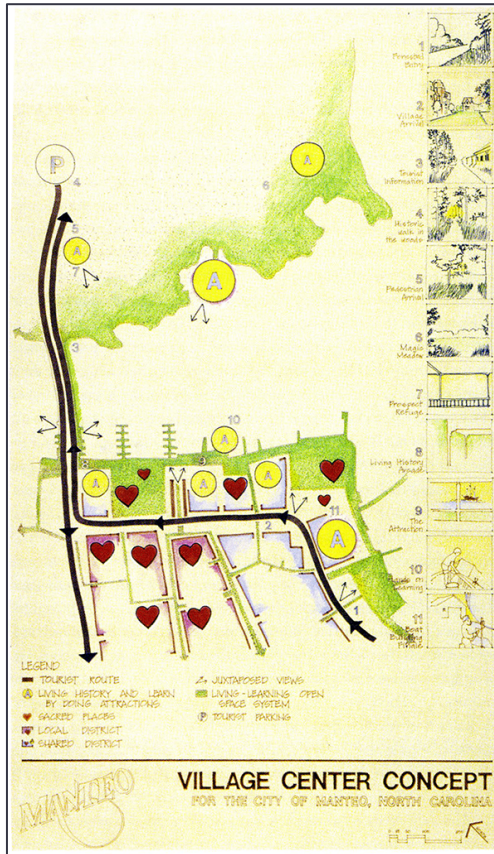


Jule's Park

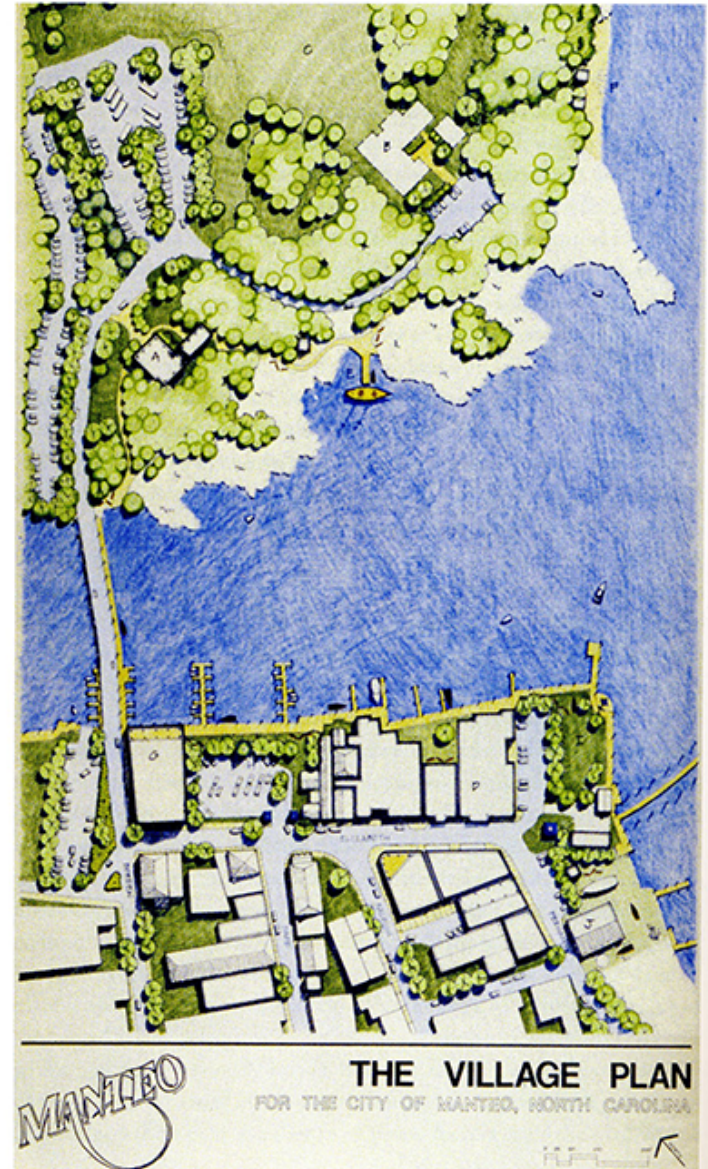
Manteo's Sacred Structure—mostly humble places that were essential to the community's daily life, identity, and health—would not be sacrificed even in times of economic hardship.



PLACE ATTACHMENTS, SACRED STRUCTURE inspire planning, design, form, stewardship, future....



The sacred structure inspired the final plan to revitalize Manteo by enhancing fishing industries, employing traditional skills to craft wooden ships, and making a front-porch-like open-space system.



making the case....

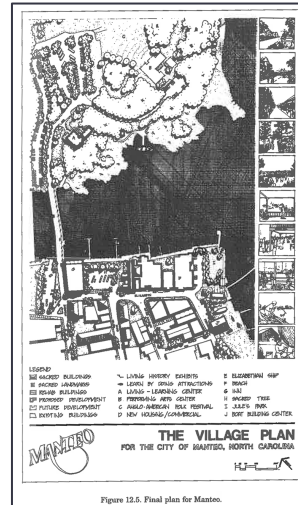
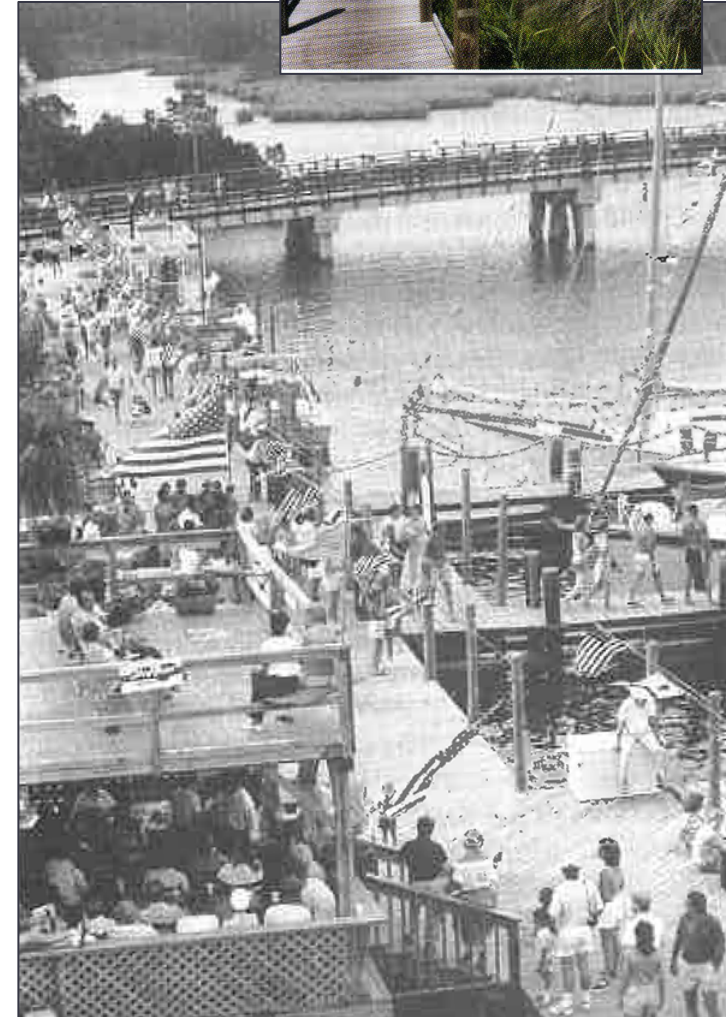


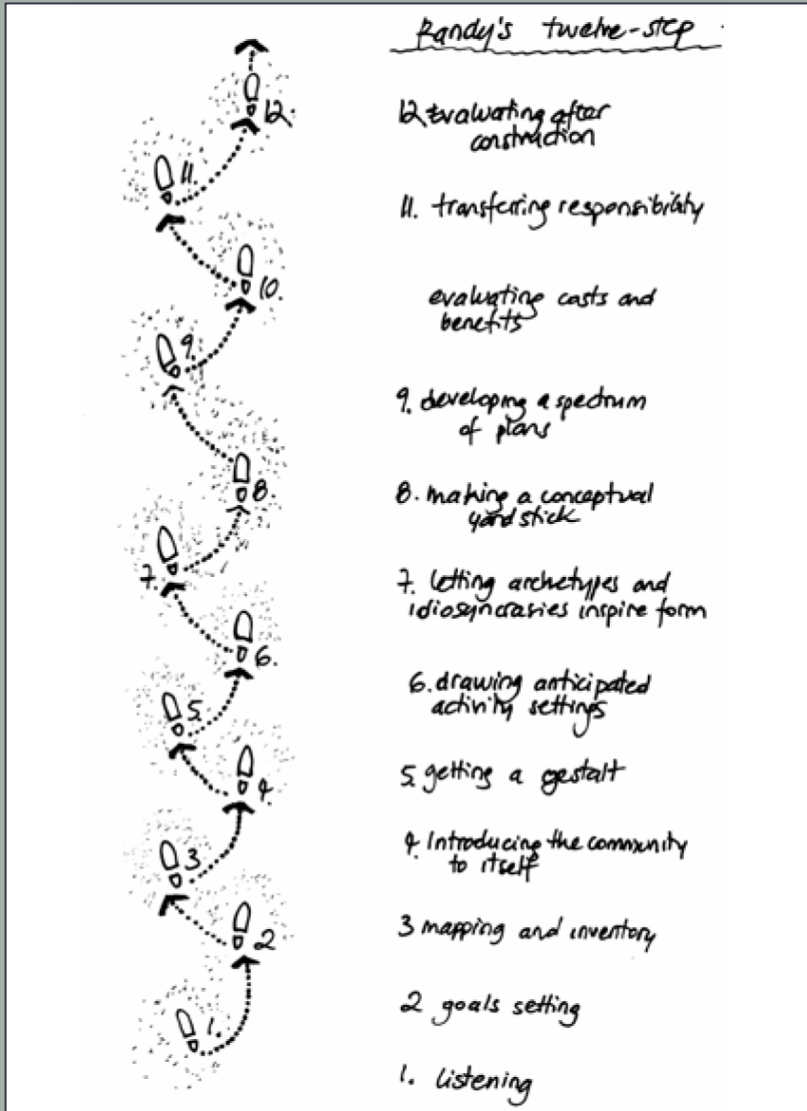
Figure 12.6. Final plan for Manton.



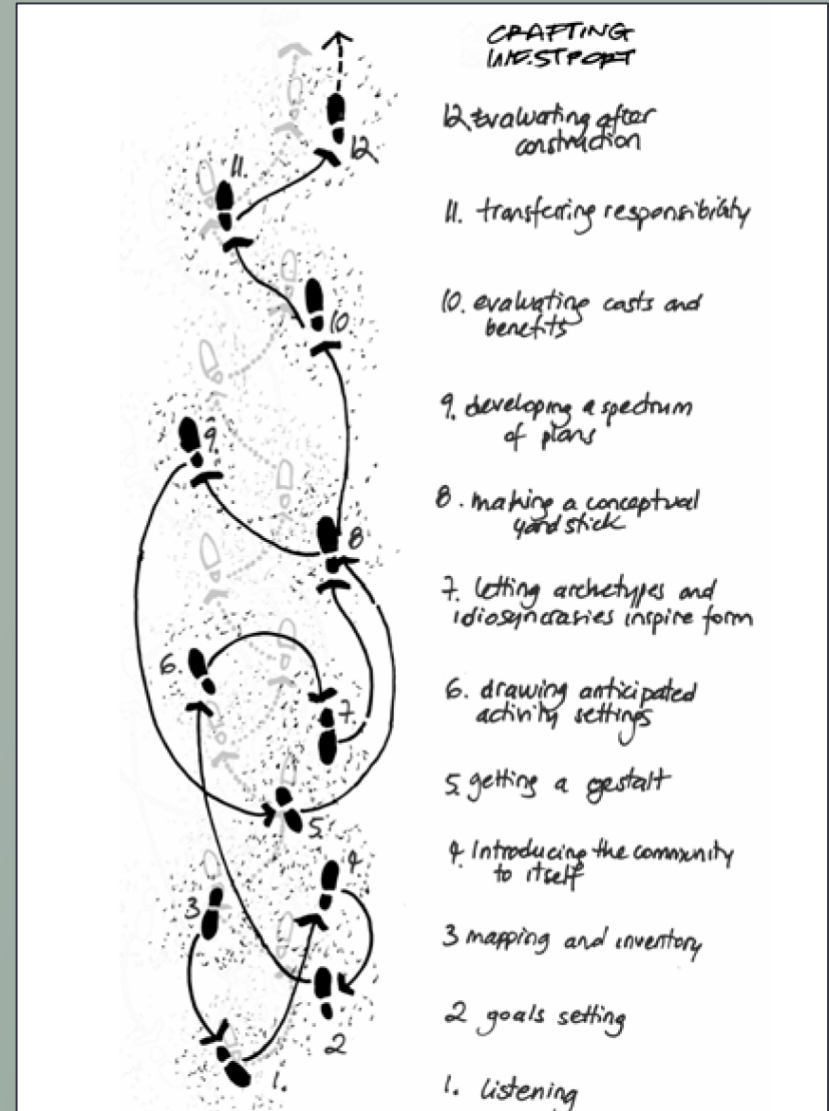
Boardwalk as...
"Civic Front Porch"



material world + activity + meaning = sense of place



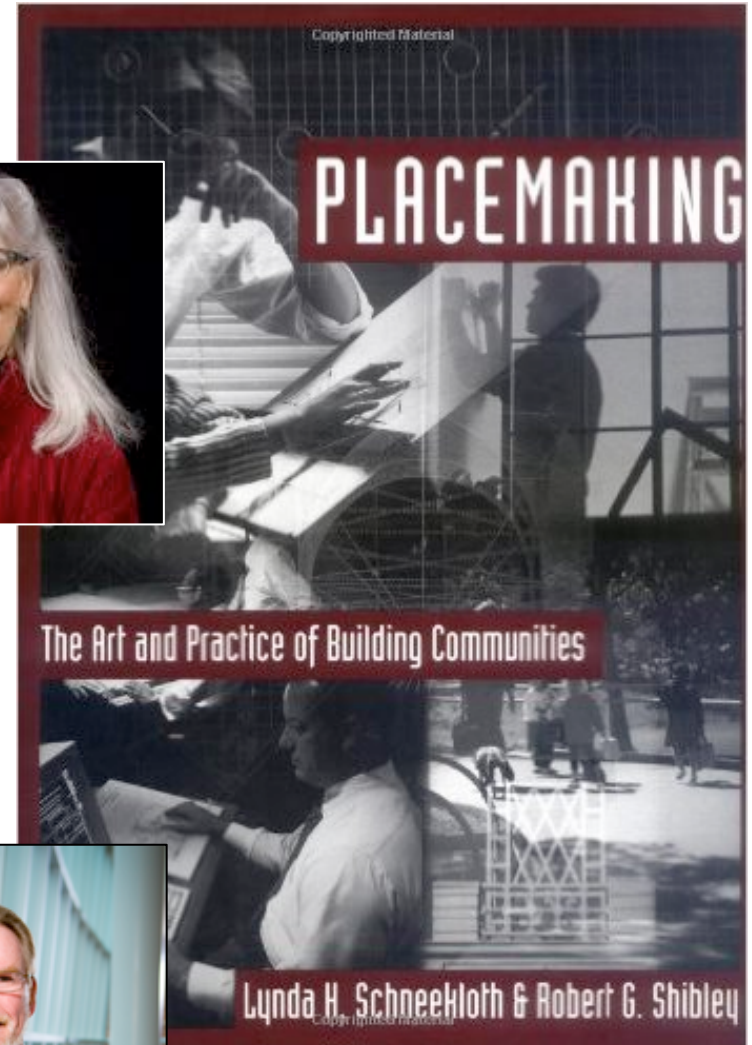
Hester's 12-Step Process



Adapted 12-Step Process in "Crafting Westport"

Lynda Schneekloth Robert Shibley

- Educators + Activists + Designers
- Placemaking Theory + Placemaking Practice
- Placemaking knowledge through works, literature, education



Schneekloth and Shibley (1995)

placemaking praxis

with *not* for

primacy of place and democracy

create relationships between people and places, and relationships among people in places

empowerment, voice to community and community identity | building

*Beautiful places will emerge as a result of the **relational aspects** of making places. This inversion of aim is based on a series of tasks that require traditional professional skills and more.*

Schneekloth and Shibley, 2008

Placemaking praxis

3 main components

Schneekloth and Shibley (1995)

1. Dialogic Space

Creating an “open space” ...a sustained space for dialogue- this is the space of creating a relationship with the place constituencies through a “**dialogic space**”

2. Confirmation and Interrogation

Undergoing the dialectical work of **confirmation** which asks what is? what has been? and **interrogation** which asks critical questions, seeks gaps, disruptions and incongruities and brings them into the dialogue (that occurs in a dialogic space)

3. Framing the action

the ongoing and emergent confirmation and interrogation reveals the constraints and opportunities for action- deciding what to include and not include; whose voices are included, methods used.

Placemaking praxis

methods + ways of working

Schneekloth and Shibley (1995)

- Many methods available and able to be invented
- Selection of methods of work and approaches to framing and solving problems is not a technical activity but an ethical one
- Methods should be questioned critically to discern whether they will empower many voices or deny collective action
- Methods should emerge from the specific situation rather than be imposed or overlaid on the context
- Placemaking methods must be linked to placemaking beliefs, ideologies and aims of practice

approaches and methods rooted in beliefs and ideologies

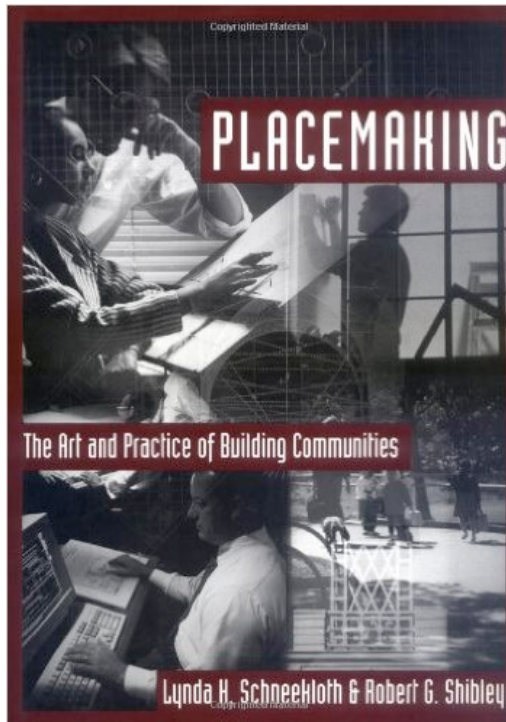
Paolo Freire

“Methodological failings can always be traced to ideological errors...If one is to adopt a *method* which fosters dialogue and reciprocity, one must first be *ideologically* committed to equality, to the abolition of privilege, and to non-elitist forms of leadership wherein special qualifications may be exercised, but are not perpetuated.”

(Schneekloth and Shibley, 1995, p.17)

Case: Roanoke Baptist Church

Schneekloth, L. and Shibley (1995). *Placemaking: the Art and Practice of Building Communities*, New York: John Wiley, p.19-63.



- **Collective process design:** designers/facilitators *with* congregation “to involve the whole congregation”
- **entering not as experts**, but as knowledge contributors, enablers and partners in process
- **open and visible** form of communicating and dialoguing
- **Iterative process** guided and dictated outcome/building design

“CLOSE ENCOUNTERS OF THE FUN KIND”

getting to know their place better

- Invited the congregation and neighbors to “visit” their neighborhood
- Community picnic; small group walks to share experiences and memories
- **SPACE WALKS:** Loosely organized walks with a score or script focusing on things to look at, explore and questions to engage related to history, environment, social aspects
- Time for reflection, discussion, mapping, compiling discoveries



SPACE WALK
Second Street #4

1. Neighborhood Resources

Walk to the library. Go inside and sit down. The library is an excellent source of information and pleasure for everyone in the community. What other things are there in Gainsboro that give the same kinds of opportunities?

Housing Authority Bldg _____ Hutton YMCA _____
Church Buildings _____
SVC DF Building _____

What other sources of learning and pleasure would you like to see in Gainsboro? (For example, neighborhood museum, a place for crafts, etc.)

Clayton House - Neigh. Museum _____ Cypre - Rec. Center _____
Theater Workshop Center _____ Sr. Citizens Home _____
YMCA Building _____ Swimming Pool _____

Walk across the street to the YMCA. Look at the corner. What was this building built for? Grand United Order of Odd F

Can you think of other buildings in Gainsboro that have character? List several:

Rebo Place - was a funeral home Abandoned building - was a drugstore
Hughes Funeral Home - now a residence Clayton Clinic - part of it is used for
sitting, rest, & residence Lauson Building - Community Serv

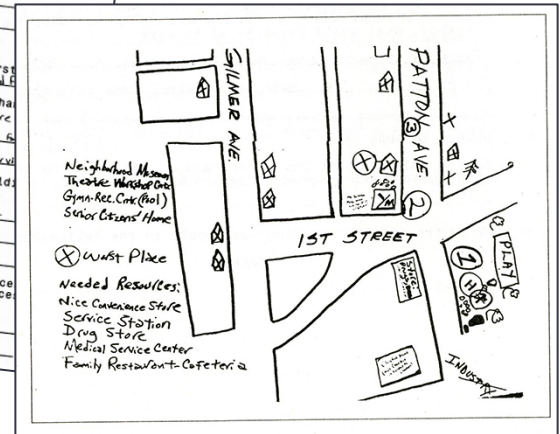
Think of some of the ways the old First Baptist church building could be used when the new building is complete.

Education Center; Bus Office; Lodge; Community Center
for Group meetings; History & Culture Center; Family
Restaurant

Do you think that a community needs the recreational service that YMCAs usually provide? yes Name some other service that you would like to have here.

Cypre, Swimming Pool

SPACE WALK PARTICIPANT SCORE + MAP



VISITATIONS: *what is a church building?*

- Expand awareness of possibilities
- “Visitation”- members visit other churches on a Sunday morning and return to their church for lunch and discussion
- created scripts for them to do the visits, observe and collect info on all the roles of the church
- share results in the New Building Corner

Choir Members

Try to get to the service at least 15 minutes early to see where the choir prepares and if they practice before service.

1. Is there a special choir practice room? _____ Where is it located? _____

Describe the room _____
_____.
2. Where does the choir dress for service? _____

Is there enough room to store robes? _____ Is there sufficient room to dress? _____
_____ Is there a safe place to keep personal belongings during service? _____
3. Where is the choir located in the sanctuary? _____

Does the choir face the altar, the congregation, the minister? _____
Watch how the choir enters and exists the choir area. Does the position of the choir seating make this easy? _____ Do you like this arrangement for the choir? Why or why not? _____

If someone had to leave the choir area during service or needed to be taken out, how would this happen? _____

4. What kind of musical instruments were used during the service? _____
_____ Did they have an electric or pipe organ? _____
What advantages and disadvantages do you see with their choice? _____

5. Did the choir use electrical amplification? _____ If so, did it add to or detract from the service? _____

VISITATION WORKSHOP SCRIPT

FORMING BUILDING COMMITTEES



- ORGANIZED AROUND CHURCH FUNCTIONS
- EACH COMMITTEE DEVELOPED PATTERNS

- Worship/Sanctuary
- Music/choir
- Educational Programs
- Ushers
- Site and Entrance
- Support Facilities
- Kitchen/Eating
- Recreational
- Nursery
- Administrative/ Organizational

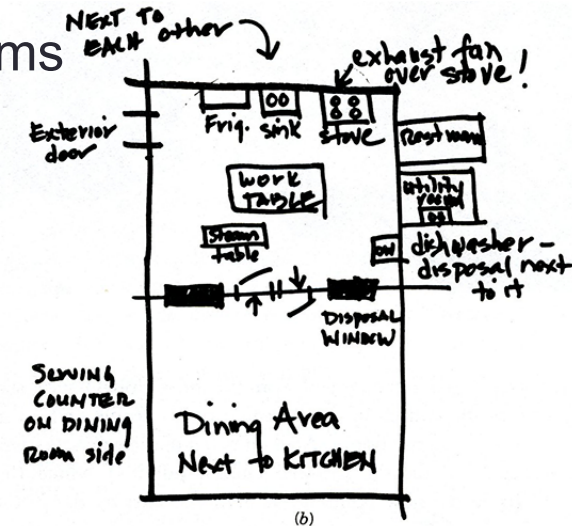


Figure 2.14 Building Committees meet to develop patterns for their area of concern.

CONCEIVING PATTERNS...

Idea?

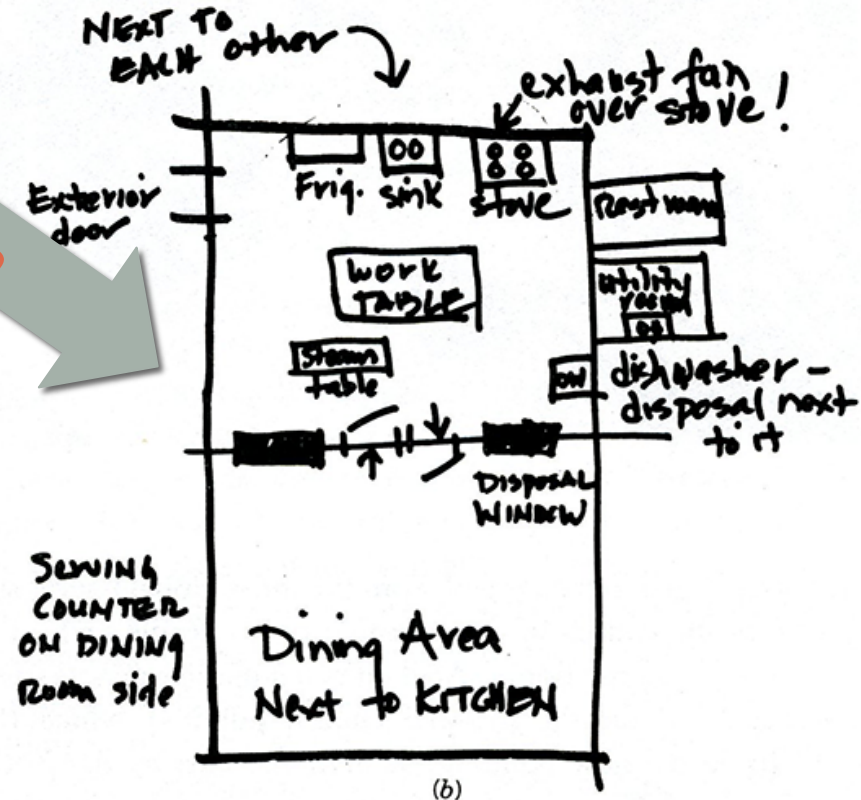
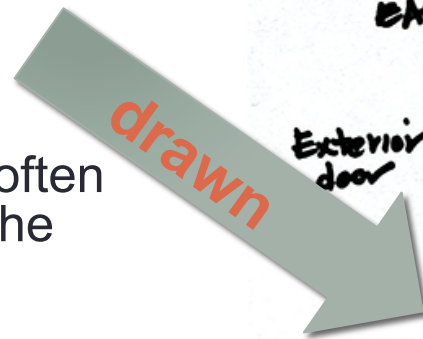
A Window into the Sanctuary

What?

Crying infants and latecomers often disturb the service or those in the sanctuary

How?

Place a glass wall between the foyer and the sanctuary so that parents with infants can see the service without disturbing others and so that latecomers can stand and wait until they see an available seat. Include a speaker system so the service can be heard as well as seen,.



CREATING A PATTERN BOOK

First Baptist Church PATTERN BOOK

593 Patterns

- select and guide the architect
- empower the congregation to drive design direction, use the materials generated, continue working with committees,
- evaluate, reflect

Idea: The Church is the People

What: The church is a body of people whose mission is to spread the good news of Christ. Its energies should therefore concentrate on people, not material possessions.

How: While the church facilities should enhance and support the activities of the people, they should be at a small enough scale and easy enough to maintain so as not to strain the resources of the people.

Idea: Foot Tapping

What: Some sounds are important during the worship services, especially foot tapping while the choir and congregation sing.

How: Surfaces under the church pews should be designed to reflect the sound of tapping feet. Do not put carpet under the pews.

Idea: Access for All

What: Not all people are blessed with youthful, healthy bodies and should not be excluded from church activities because of physical barriers, such as long flights of stairs, steep inclines, and slippery surfaces.

How: Eliminate barriers and provide access to all major parts of the church buildings. This can be accomplished by ramps, elevators, and handrails.

Figure 2.16 Three of 593 patterns for the new First Baptist Church.

PATTERNS EMBODIED in place + form

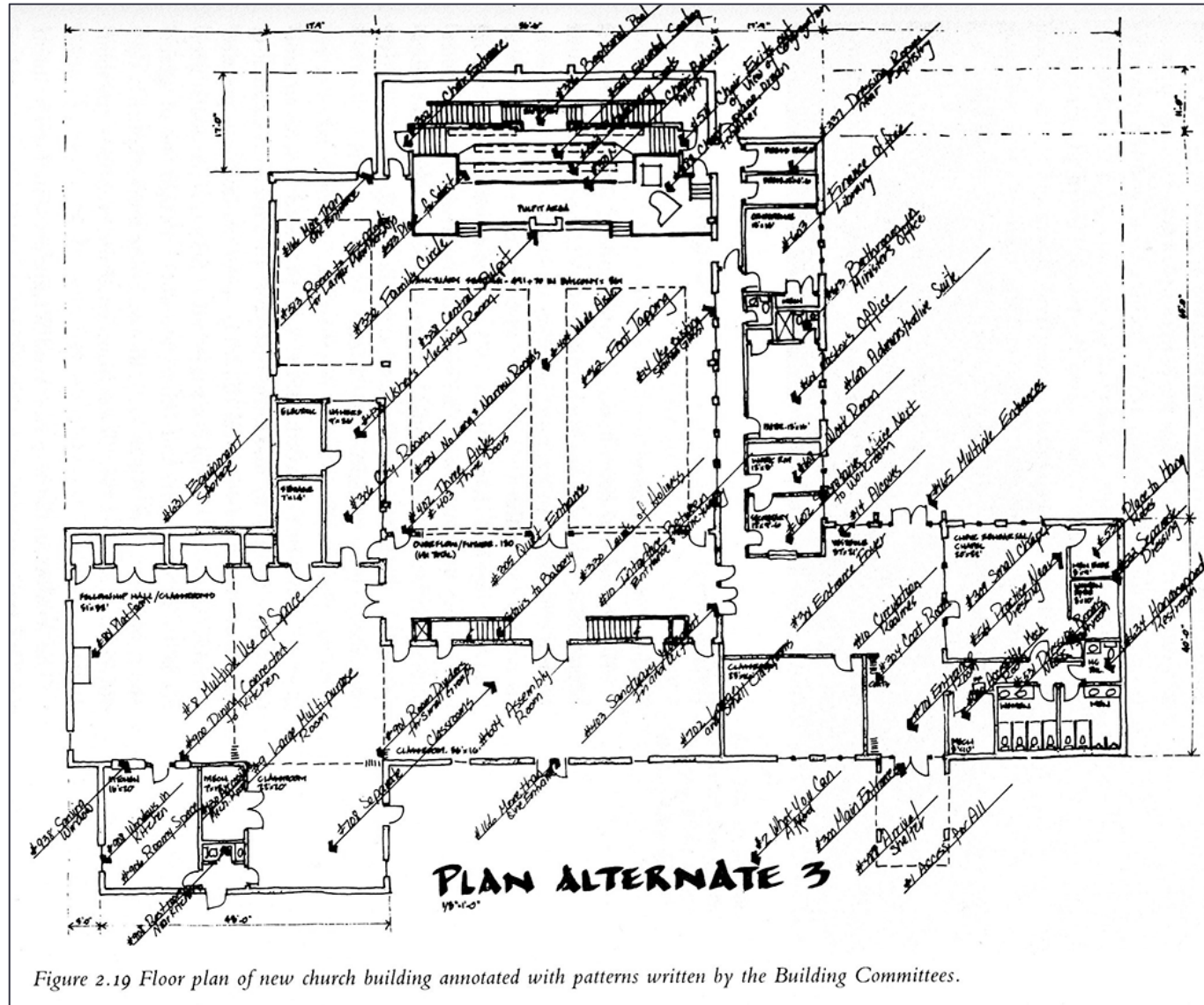


Figure 2.19 Floor plan of new church building annotated with patterns written by the Building Committees.

making the case....

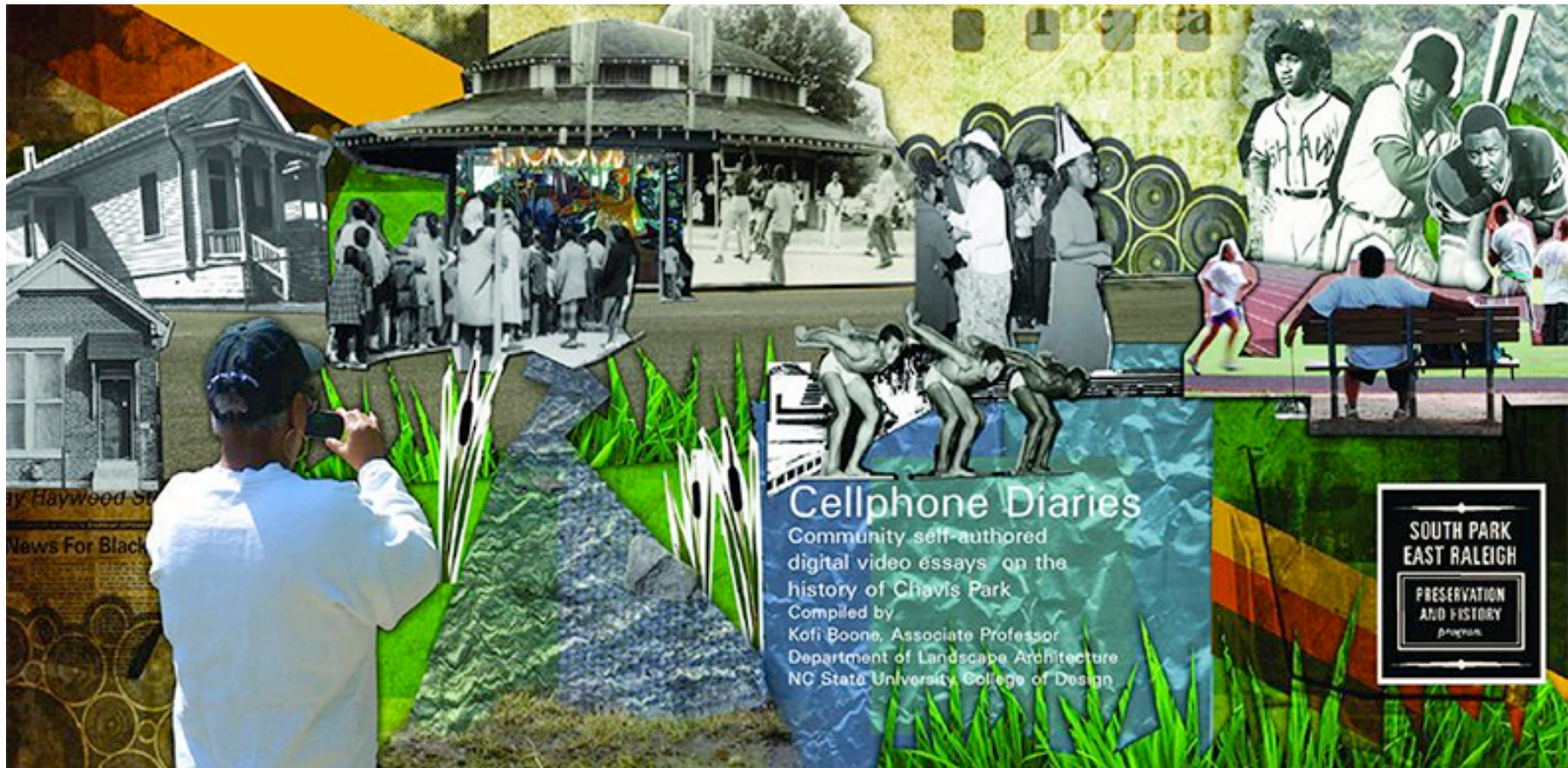
Chavis Park, Raleigh NC

Kofi
Boone



cellphone diaries

innovate tools enabling people to create their place



Boone, K. (2012). "Cellphone Diaries." *Prism: A Journal of Regional Engagement*, Vol 1: No. 2. pp.172-182.

making the case....

Community Core Values

PRESERVE
THE HISTORIC CHANGING LANDSCAPE

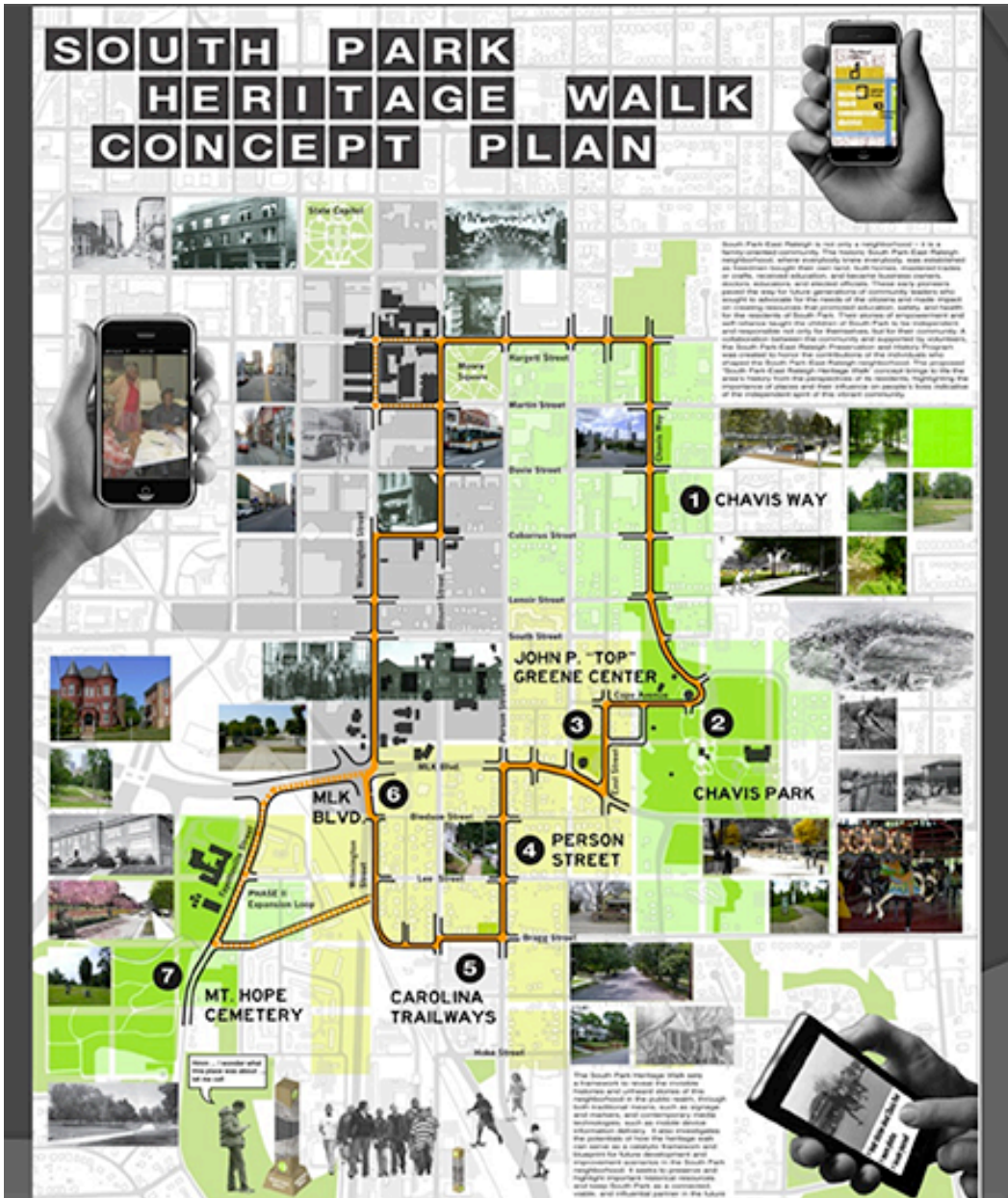
ENHANCE
PHYSICAL AND CULTURAL ASSETS

PROMOTE
THE AREAS AFABLE TO LIVE, LEARN AND INVEST

EXPLORE
DESIGN RECOMMENDATIONS FOR FUTURE DEVELOPMENT

1. We value the contributions of African American citizens of South Park-East Raleigh and feel that these contributions ought to be honored and remembered.
2. We value the residents of South Park - East Raleigh, particularly those who have lived in the area for years - and we desire to capture and record their memories and recollections while we still can.
3. In 1991, 532 South Park - East Raleigh buildings were deemed to be of historical value by the Raleigh Historic Properties Commission. We value these buildings and believe they ought to be preserved and marked.
4. We value the growth and development of downtown Raleigh, and seek to find ways to encourage that growth while preserving and highlighting important historical resources.





Cell-phone training session preceding walks with “tech buddies”

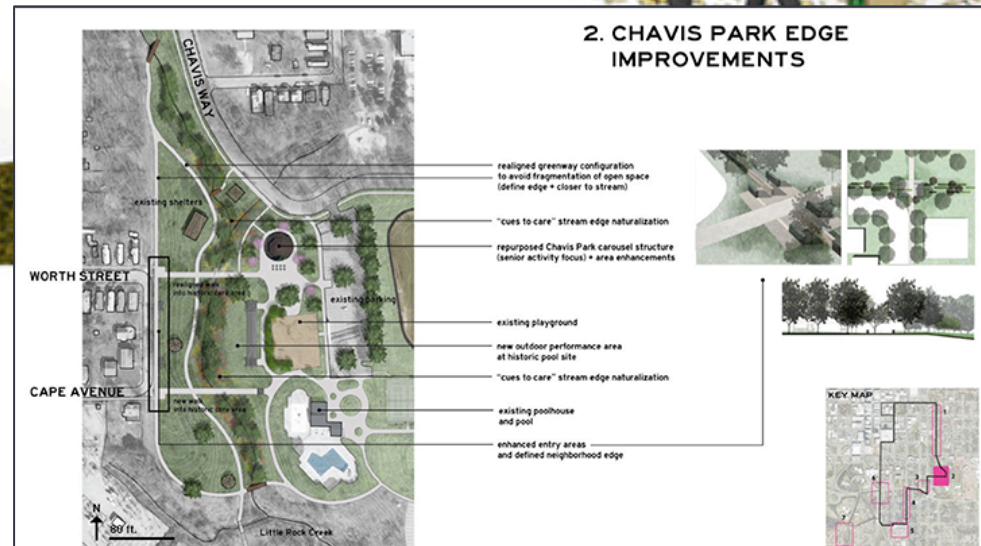
Stories reveal heritage, identity, shared history and become embodied in “Heritage Walk” and community action to save the Carousel



Chavis Park Carousel

The old carousel in Chavis Park was the social and recreational heart of the old South Park neighborhood, stirring many memories among residents and is still a great source of pride today. Though there are plans to relocate the carousel within the park, this concept calls for keeping the original shell of the carousel building and converting it to an activity center for seniors, as well as overall area landscape improvements with a heritage walk into kiosk.

“Heritage Walk” and Carousel building and place become embedded in revitalized “new” Park Design and meanings



learning from the cases?

- Professional and non-professional roles and relationships fostered and shaped by community design purpose, process and ethics
- Process and methods are a critical act
- Process and methods vary and are tailored to purpose, place, community, people, culture
- “Community” Matters: Building, Empowerment and Place Attachment are central
- Design reflective and expressive of place and community; fostering affective bonds between people and place, producing shared community meanings

learning from the cases?

Community Design (democratic)

HABITS OF PRACTICE

- task sharing
- sharing power, authority and authorship
 - design as co-creation
- rigorous and critical processes
 - design skillsets +
- mutual respect for local and expert knowledge
 - on-going reflection and evaluation
- collaboration
 - flexibility
- commitment- across time, space
- political, ethical



© MANUEL CAFINI 2012

LAITY

co-participants | co-creators |
local knowledge

Community Design
meeting ground

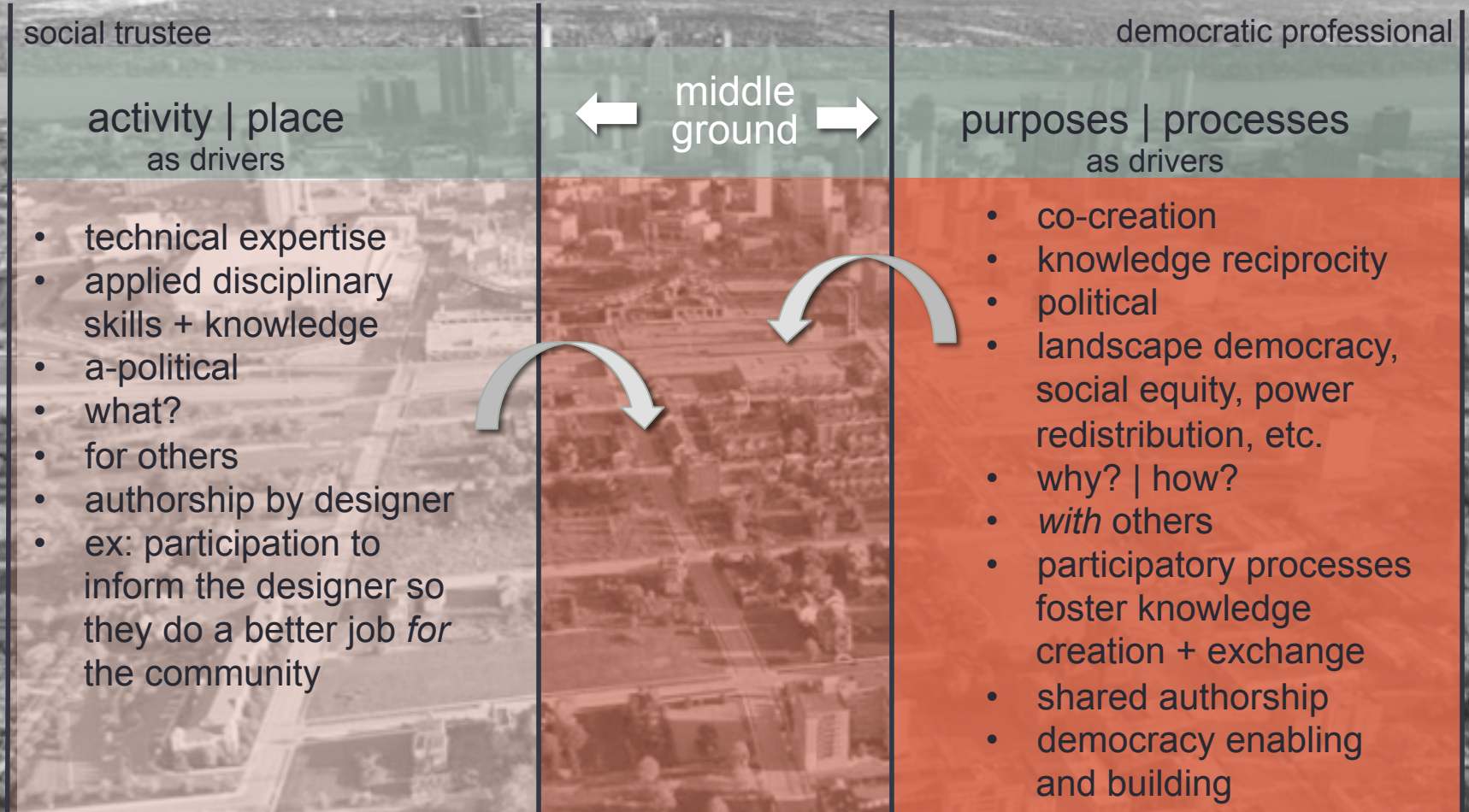
PROFESSIONALS

intermediary | facilitative |
Interactive| collaborative

spectrum

.community situated design

.participatory community design, community engaged design, democratic design



democratic professional

attributes

- Facilitative of more active and engaged democracy
- spreads and also gains useful habits of active and reflective citizenship
- encourages democratic capabilities, interests, norms
- “habituated” to norms of democratic civic participation
- gain healthy relations of authority and gain authority
- temper ambitions and ones habits of mind

challenges

competent
practitioner/
researcher
adopting
norms
of discipline



good facilitator
of community
participation

exercise
authority



share
authority

**Towards democratic professionalism...
changing field | practice | knowledge**

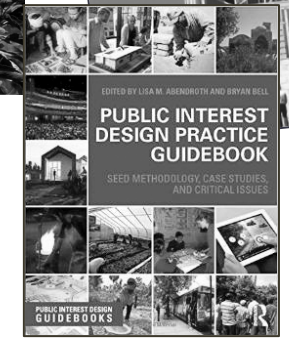
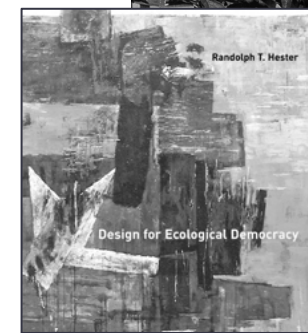
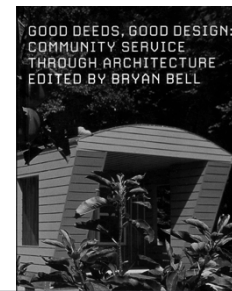
environmental justice
PUBLIC INTEREST DESIGN
DESIGN
 socially responsible
 democratic
 socially engaged design
HUMANITARIAN
 community-engaged design
 PARTICIPATORY DESIGN
DESIGN FOR EQUITY
Placemaking
 SOCIAL IMPACT
SOCIAL ACTIVISM DESIGN



network



- citizen designer | architect*
- community designer*
- placemaker*
- democratic designer*
- public interest designer*
- social activist designer*



literature