

Operationalising the “landscape approach”



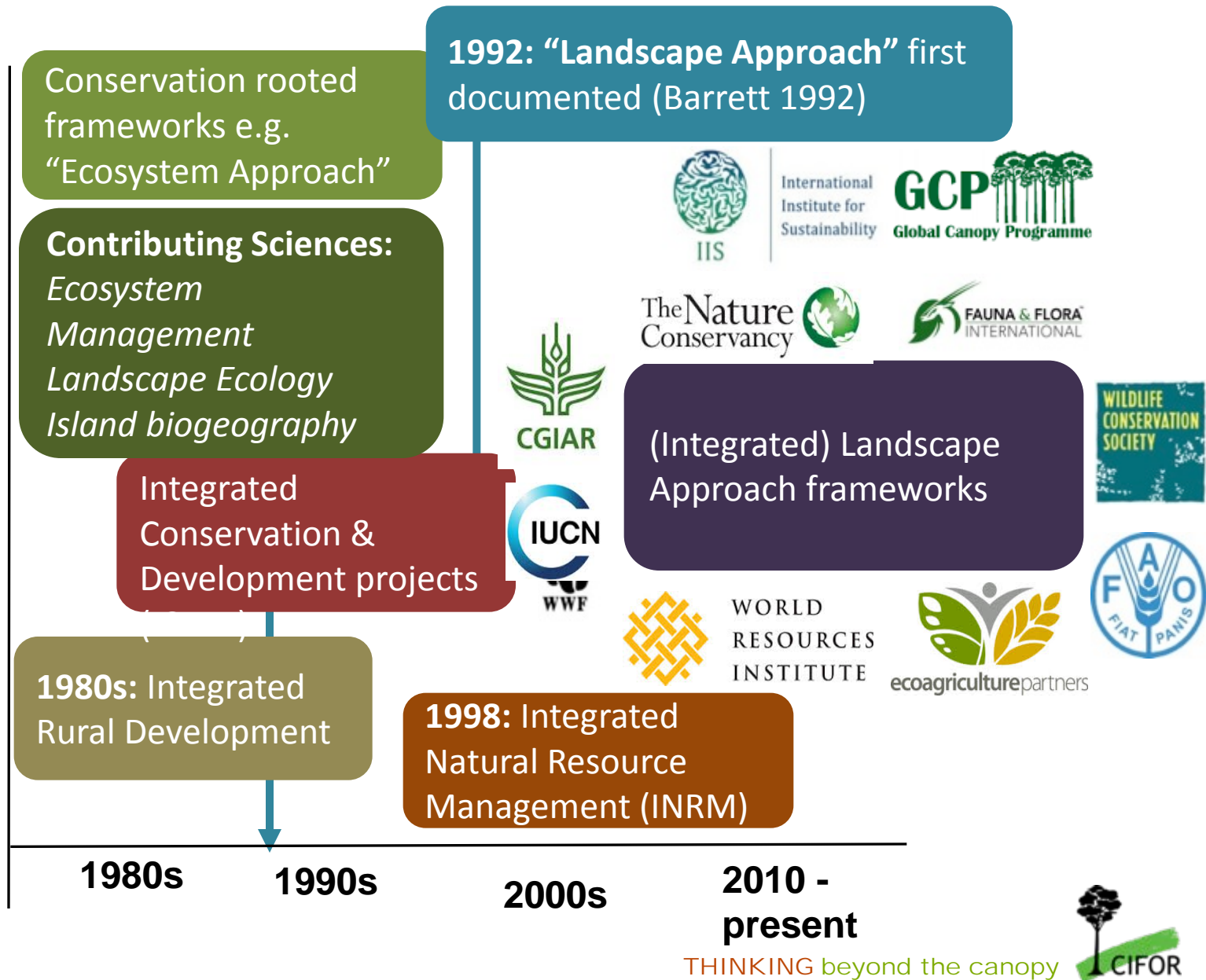
Terry Sunderland
Principal Scientist
Centre for International Forestry Research
10th November 2015

What do we mean by landscapes?



- Landscapes are often fuzzy concepts – they are not planning units
- *“A geographical construct that includes not only the biophysical components of an area but also the social, political, institutional and cultural components of that system”*

Development of the “Landscape Approach”



What are integrated landscape approaches?

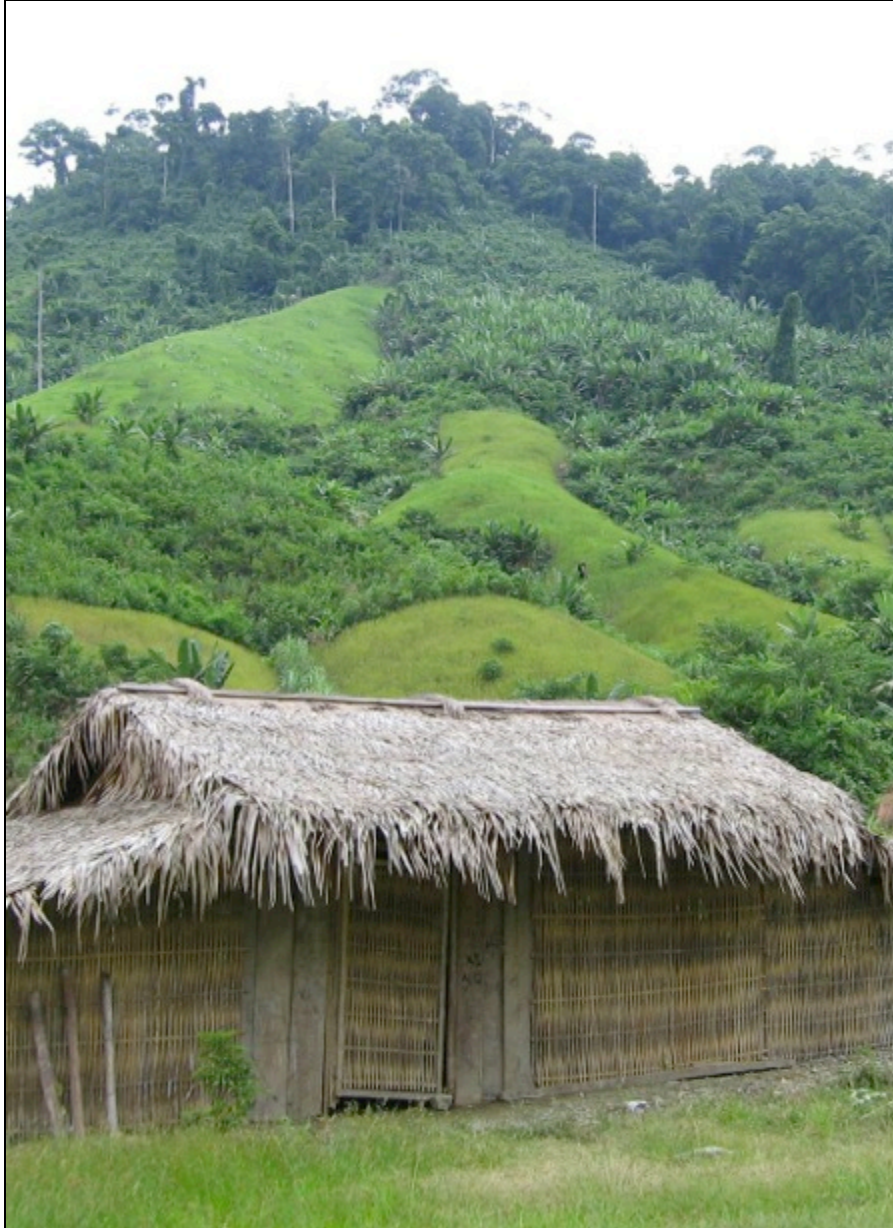
- A response to the failings of sectorial land management approaches
- The latest in a series of attempts to concurrently address conservation, development and restoration challenges
- A refinement of previous approaches
- A method to integrate stakeholders at multiple scales
- A framework to integrate policy and practice
- A land management strategy to fulfill social, economic, ecological & cultural objectives, including forest restoration
- A tool to assess performance and manage trade-offs within the landscape
- **All of the above?**

Shooting in the dark..?



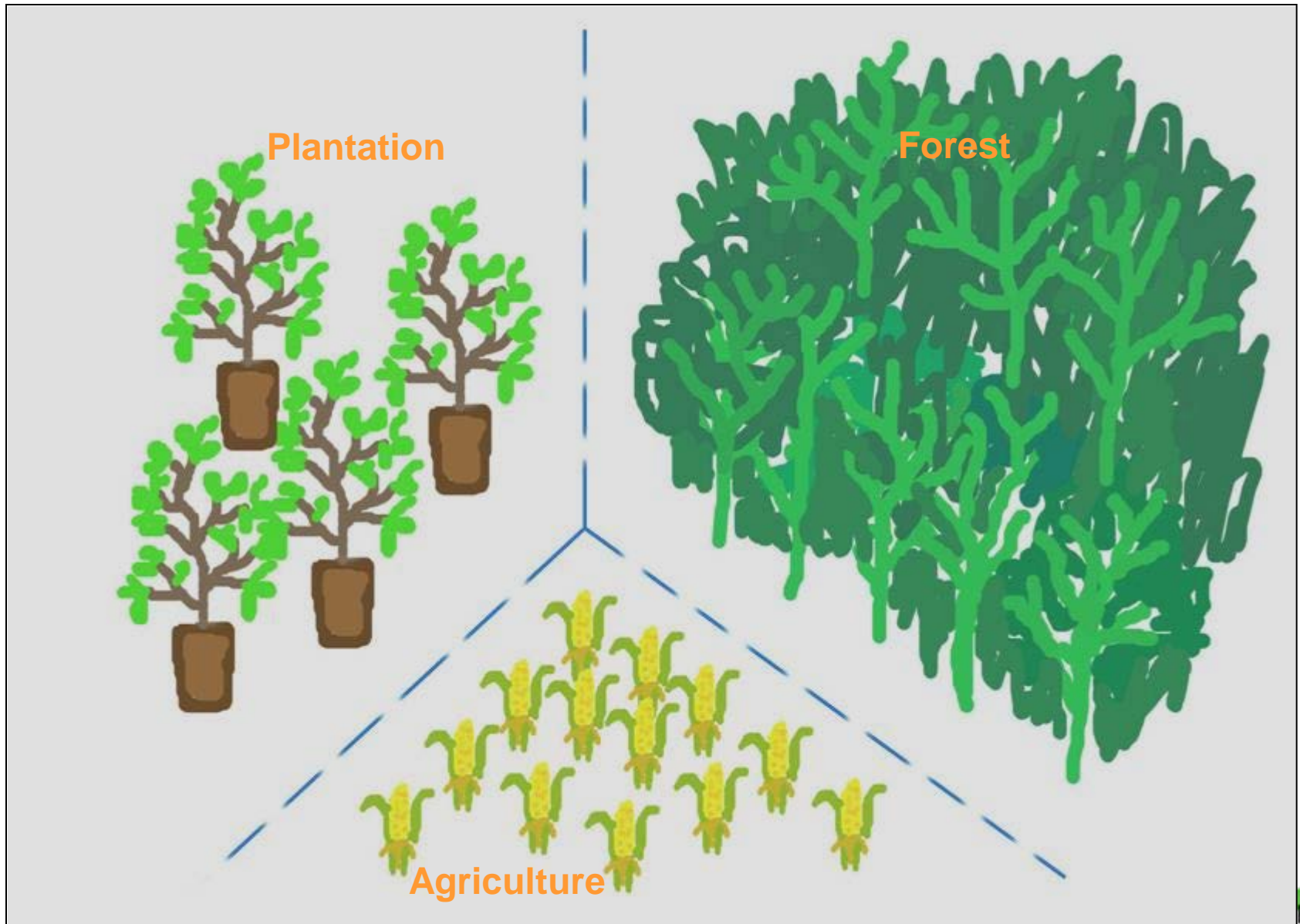
- Large body of literature on “landscape approaches” and “ecosystem approaches” but little consensus on the “how” of implementation
- General principles and guidelines have largely been missing
- However, need to avoid “one size fits all” approach. Context is everything: there is no silver bullet.
- Complex landscapes; complex challenges

Multi-functionality



- Combination of separate land units with different functions (spatial segregation)
- Different functions on the same unit of land but separated in time (temporal segregation)
- Different functions on the same unit of land at the same time (functional integration or “real multi-functionality”)

But in reality, segregation is the norm



“New” (landscape) approaches

- CIFOR and multiple partners have been working on defining and refining broad “landscape approaches” building on previous initiatives
- How? Review of published literature, multiple workshops for consensus building, conferences/side events (Global Landscapes Forum), site-based workshops
- Validated by extensive survey of field practitioners, systematic reviews etc.
- Based on this work, the Convention of Biodiversity (CBD) commissioned CIFOR to draft the report: *“Sustainable use of biodiversity at the landscape scale”* which was “taken note” of at COP11 in Hyderabad
- “Ten principles” paper (Sayer et al. PNAS) + others

So, what is new?



- The landscape approach has been re-defined to include societal concerns related to conservation and development trade-offs and negotiate for them
- Increased integration of poverty alleviation goals
- Increased integration of agricultural production and food security
- Emphasis is on adaptive management, stakeholder involvement and multiple objectives

Landscapes and “management”

- Collecting socio- economic data at various levels, engaging key stakeholders
- Spatial data: administrative boundaries, land cover change and current land uses
- “Governance landscape” including local (traditional) institutions
- Focus on ecosystem services and agricultural productivity; moving away from protected areas alone



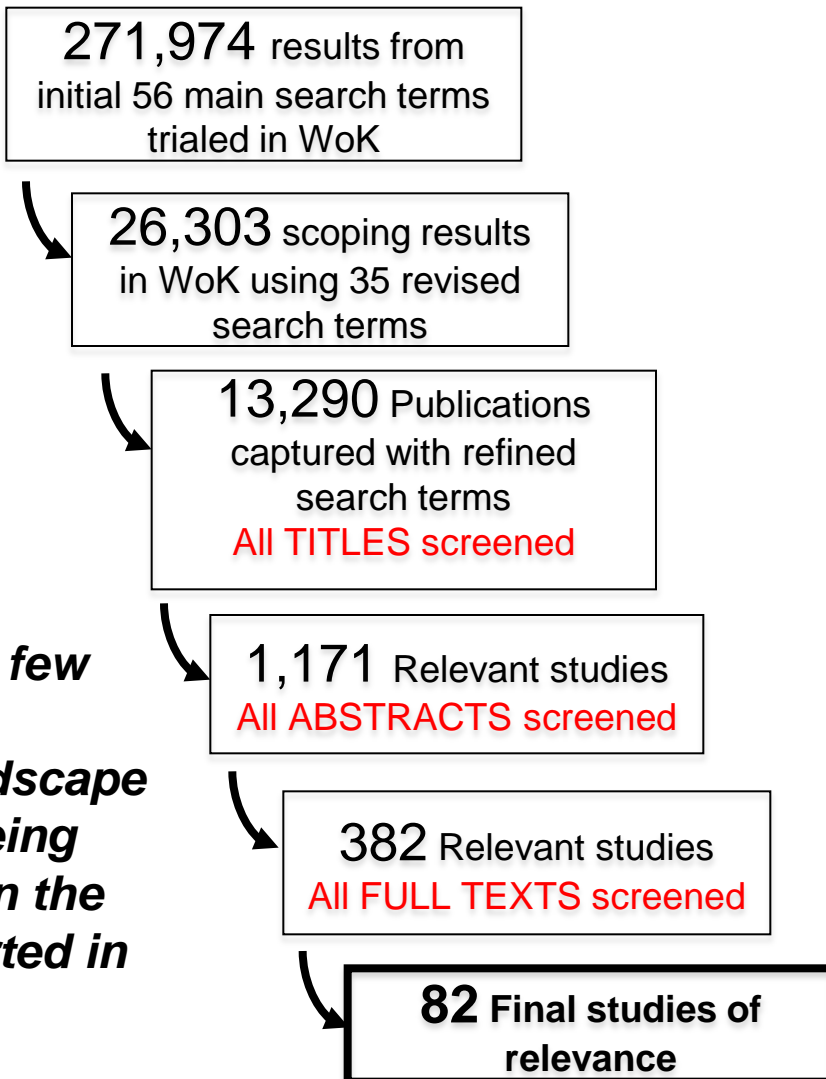
The “Ten Commandments”...?





Sayer et al. 2013 PNAS

Systematic review: peer-reviewed articles



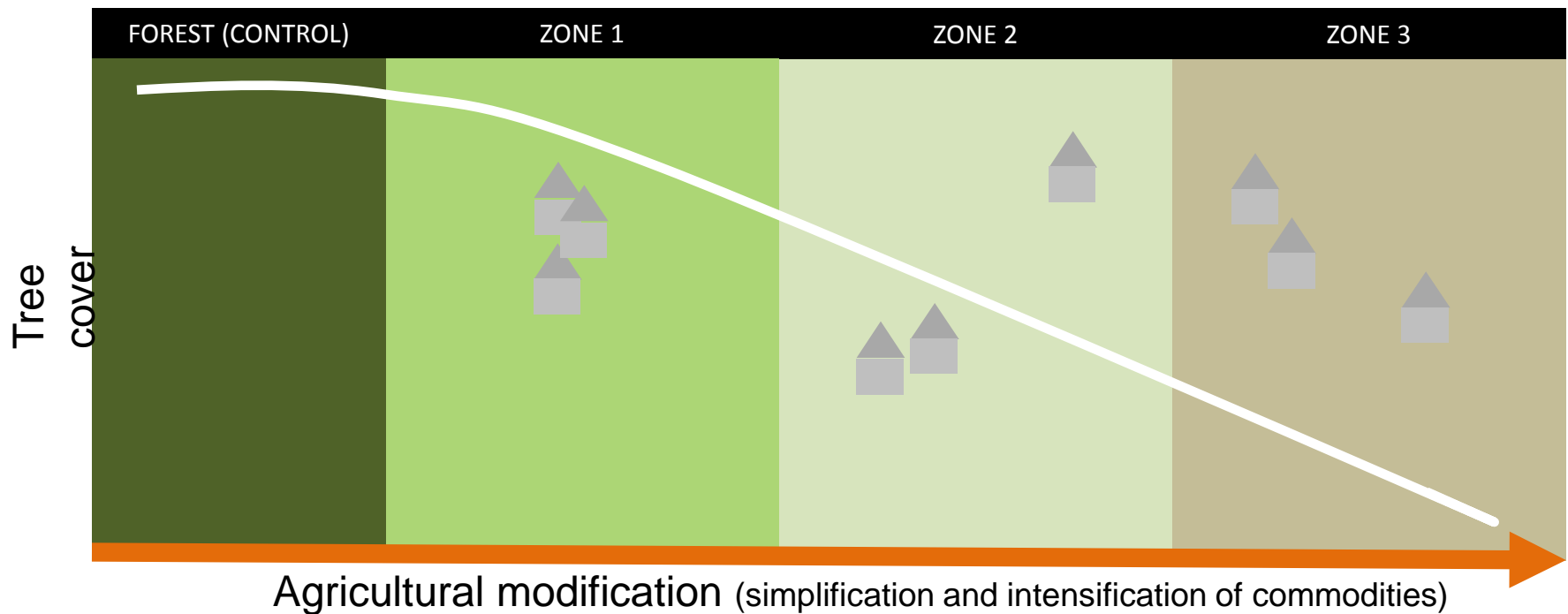
There are very few examples of integrated landscape approaches being implemented in the field and reported in the scientific literature



Experimental Design

A landscape-level approach, with a nested 3-level hierarchical design:

- 1 A **landscape** exhibiting changing land use practices and agrarian change
- 2 Three **land use 'zones'** in each landscape, a gradient of agricultural modification
- 3 **Villages or settlements** within each zone



Experimental Design

A landscape-level approach, with a nested 3-level hierarchical design:

- 1 A **landscape** exhibiting changing land use practices and agrarian change
- 2 Three **land use 'zones'** in each landscape, a gradient of agricultural modification
- 3 **Villages or settlements** within each zone

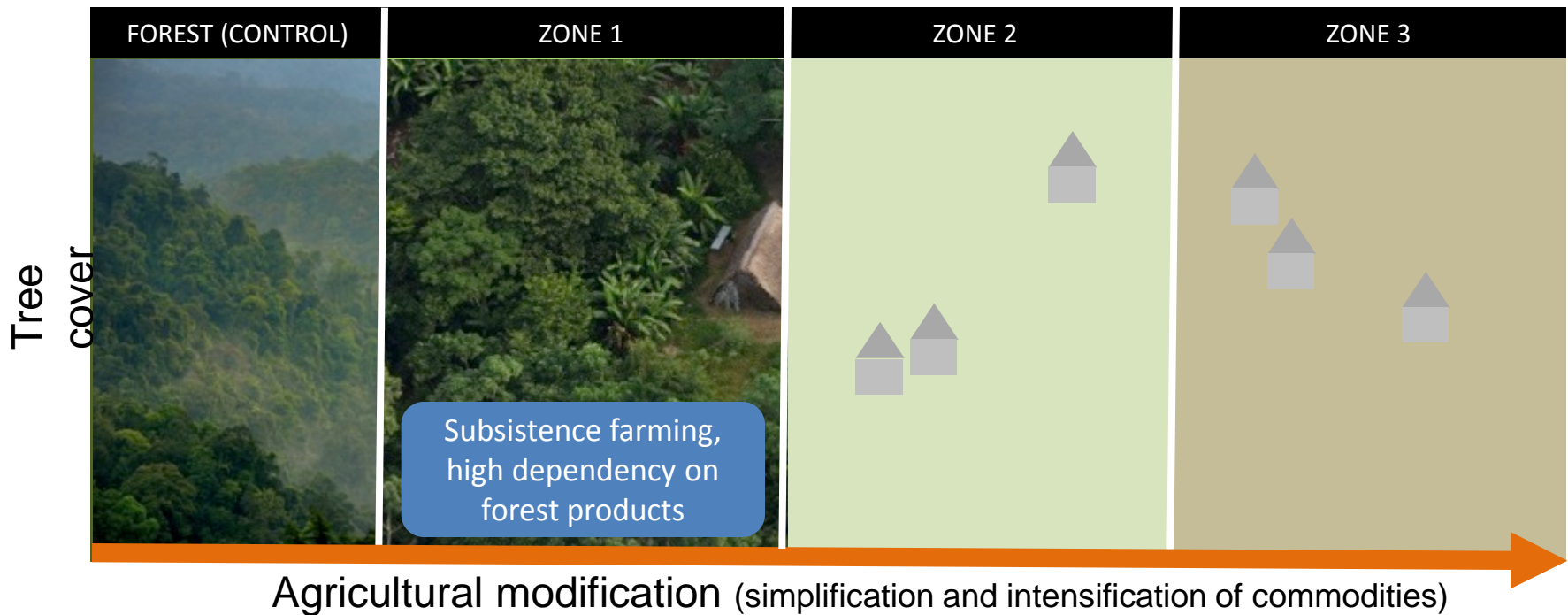
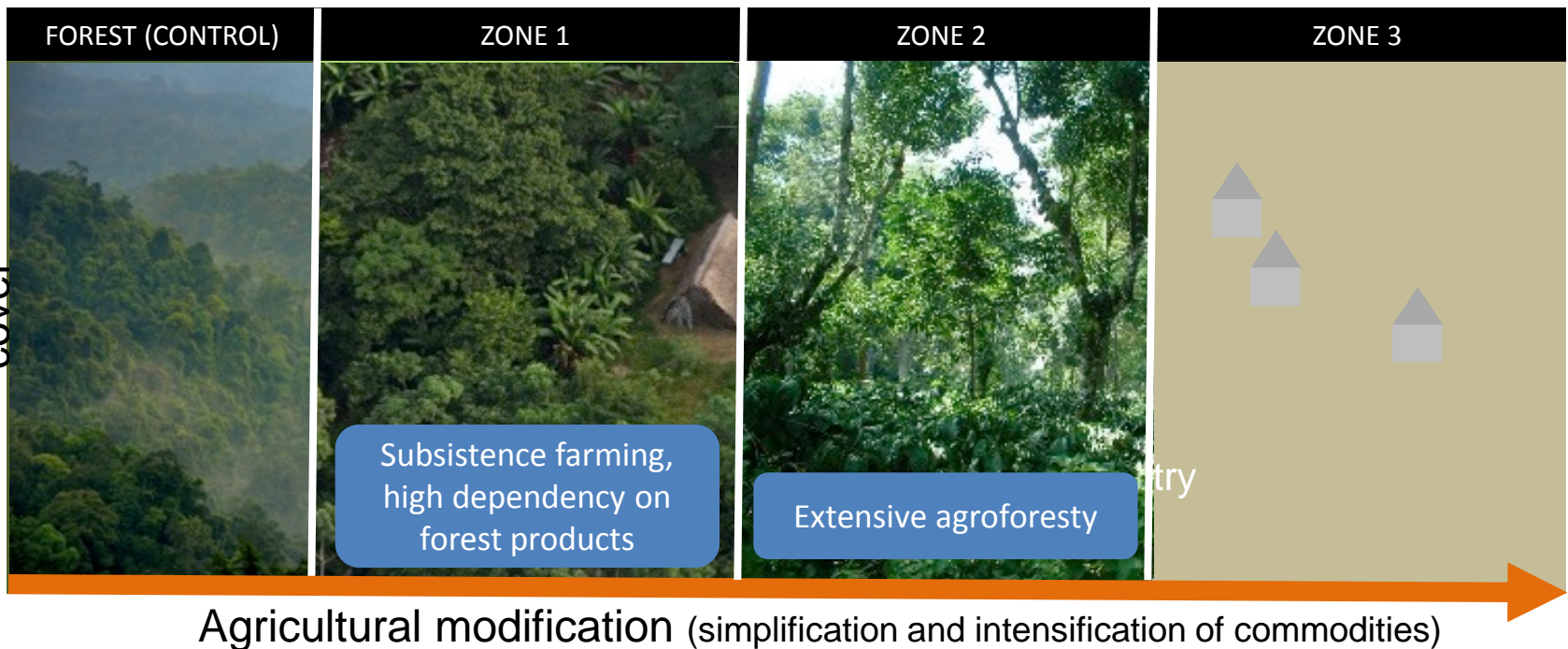


Photo credits: CIFOR

Experimental Design

A landscape-level approach, with a nested 3-level hierarchical design:

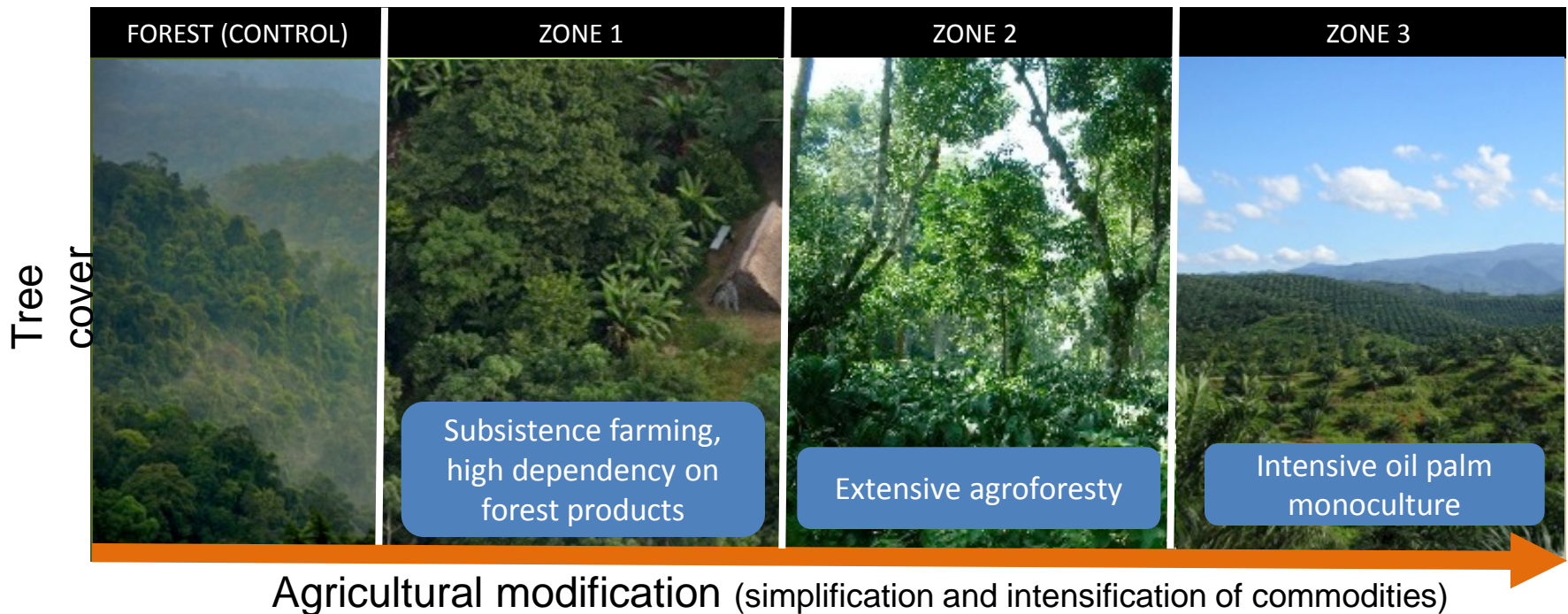
- 1 A **landscape** exhibiting changing land use practices and agrarian change
- 2 Three **land use 'zones'** in each landscape, a gradient of agricultural modification
- 3 **Villages or settlements** within each zone



Experimental Design

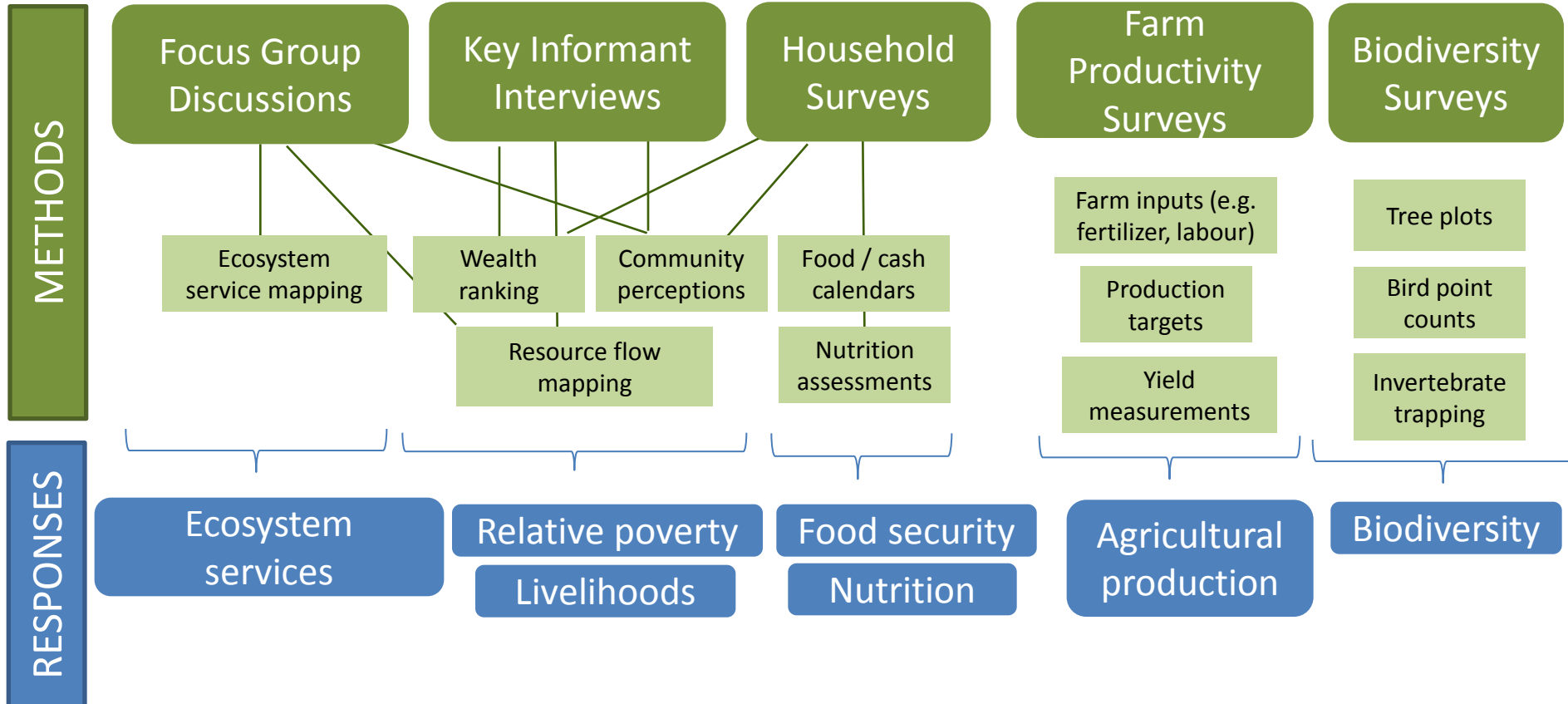
A landscape-level approach, with a nested 3-level hierarchical design:

1. A **landscape** exhibiting changing land use practices and agrarian change
2. Three **land use 'zones'** in each landscape, a gradient of agricultural modification
3. **Villages or settlements** within each zone

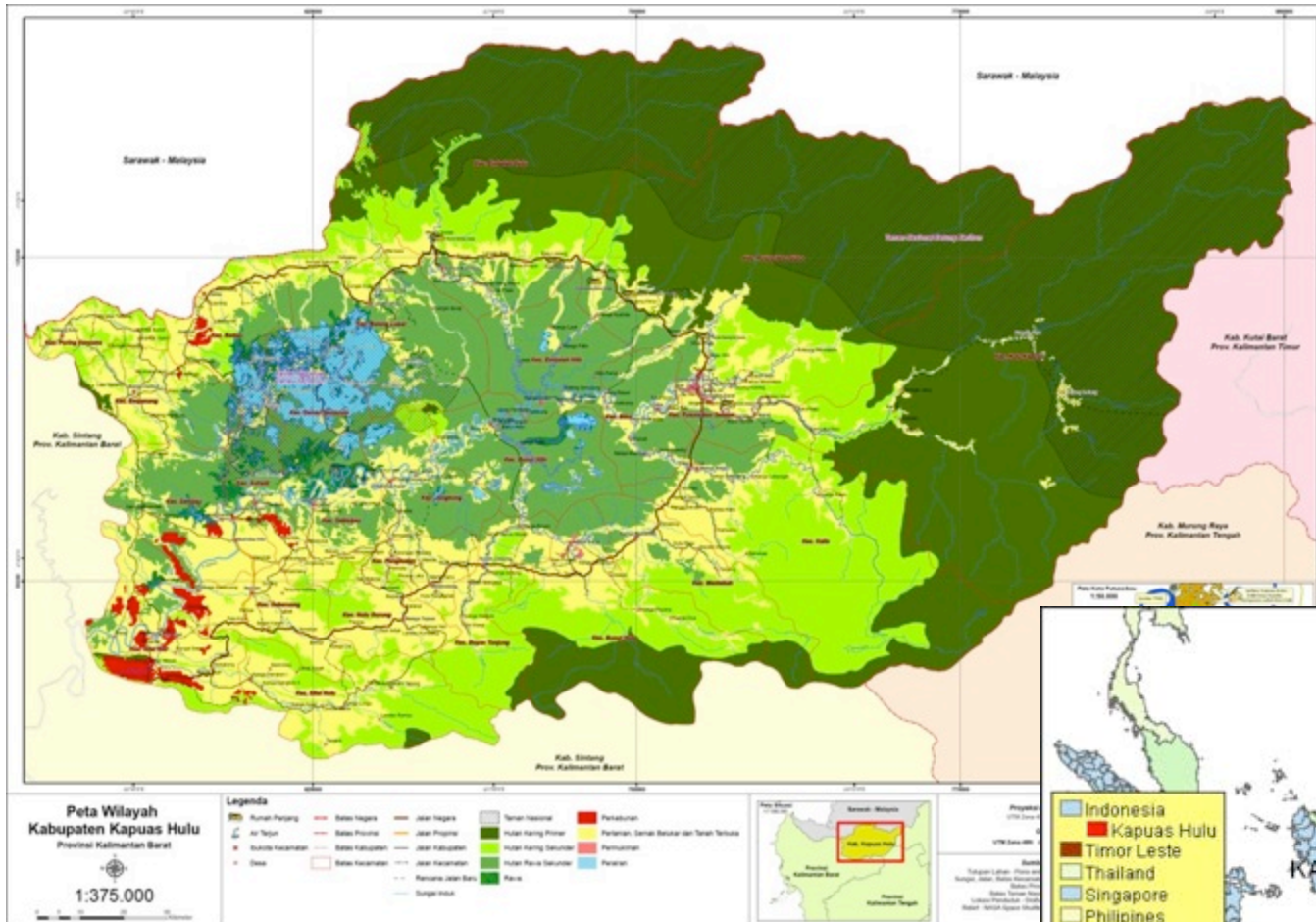


Field Methods

In each zone the following methods are used:



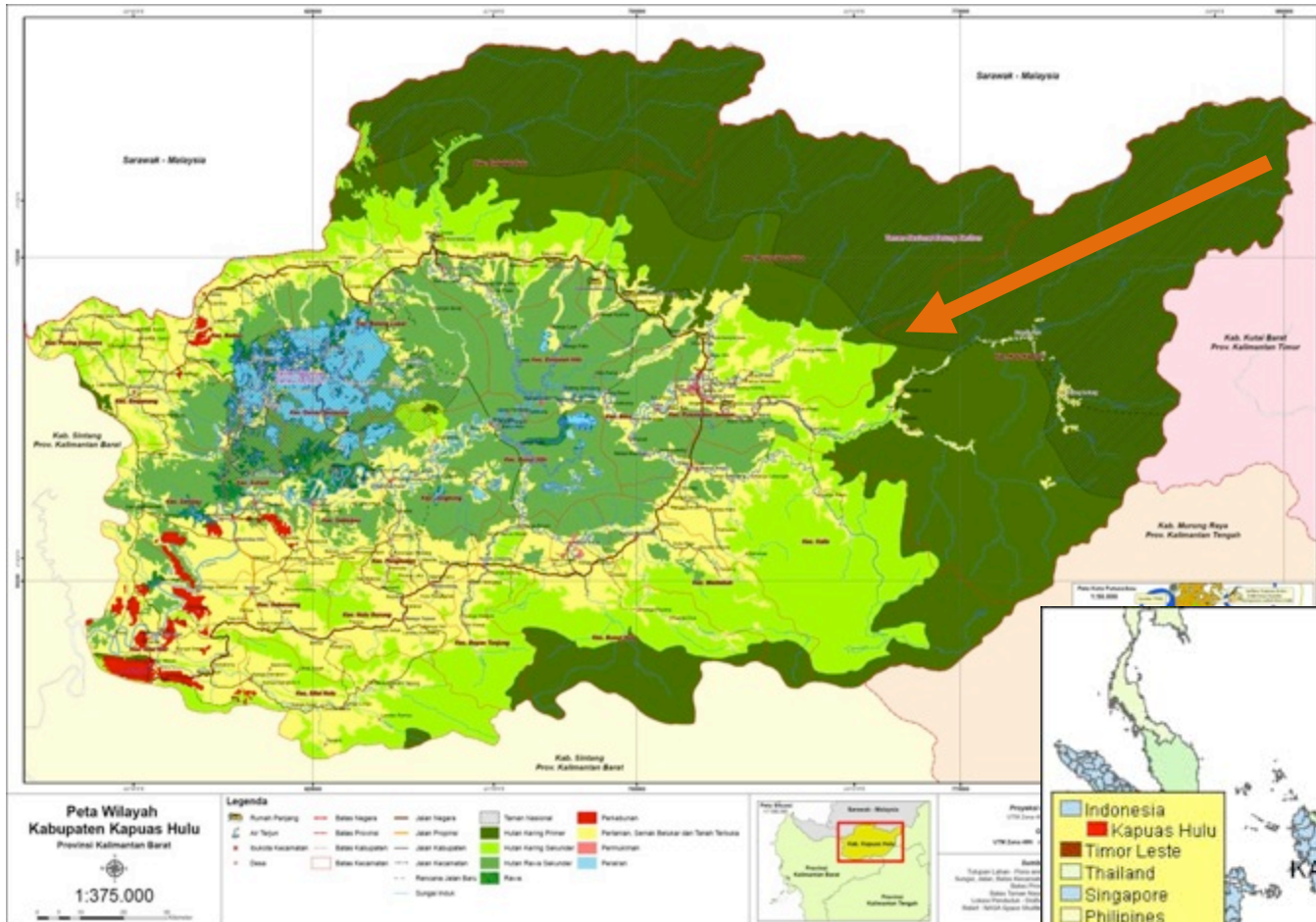
Study site: Kapuas Hulu, Kalimantan, Indonesia



- Primary forest
- Rubber agroforestry
- Oil palm plantation
- Oil palm concession



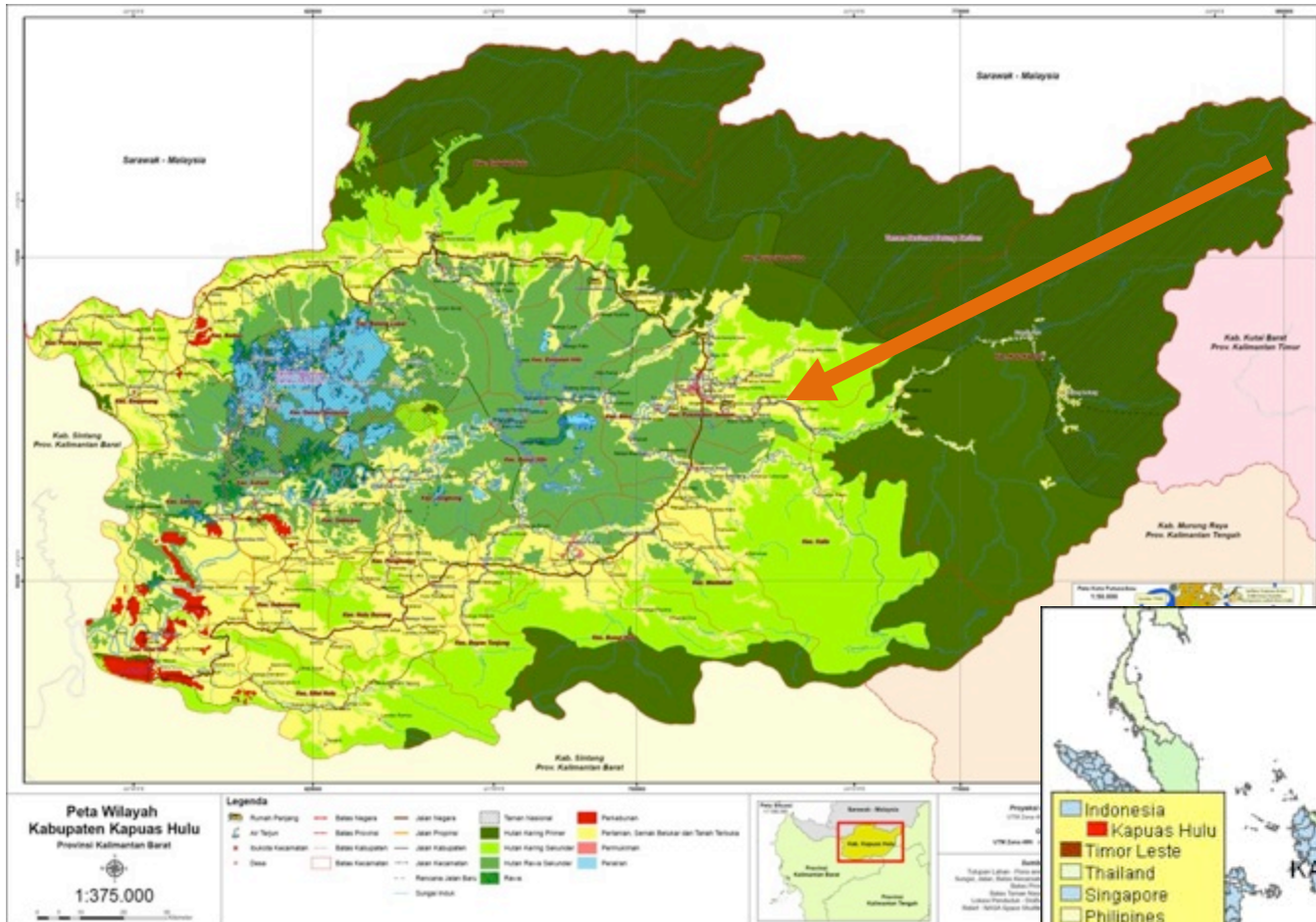
Study site: Kapuas Hulu, Kalimantan, Indonesia



- Primary forest
- Rubber agroforestry
- Oil palm plantation
- Oil palm concession



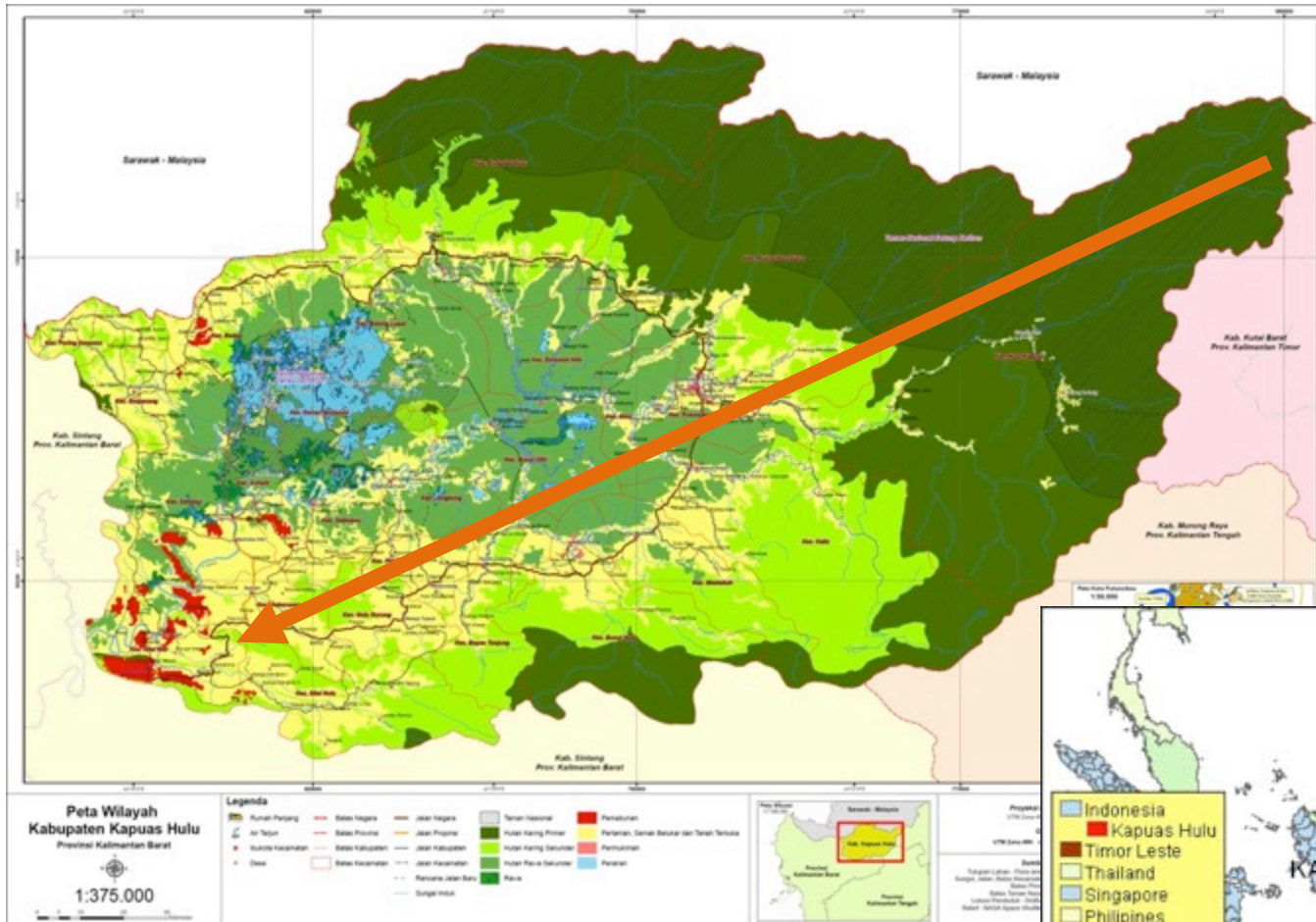
Study site: Kapuas Hulu, Kalimantan, Indonesia



- Primary forest
- Rubber agroforestry
- Oil palm plantation
- Oil palm concession



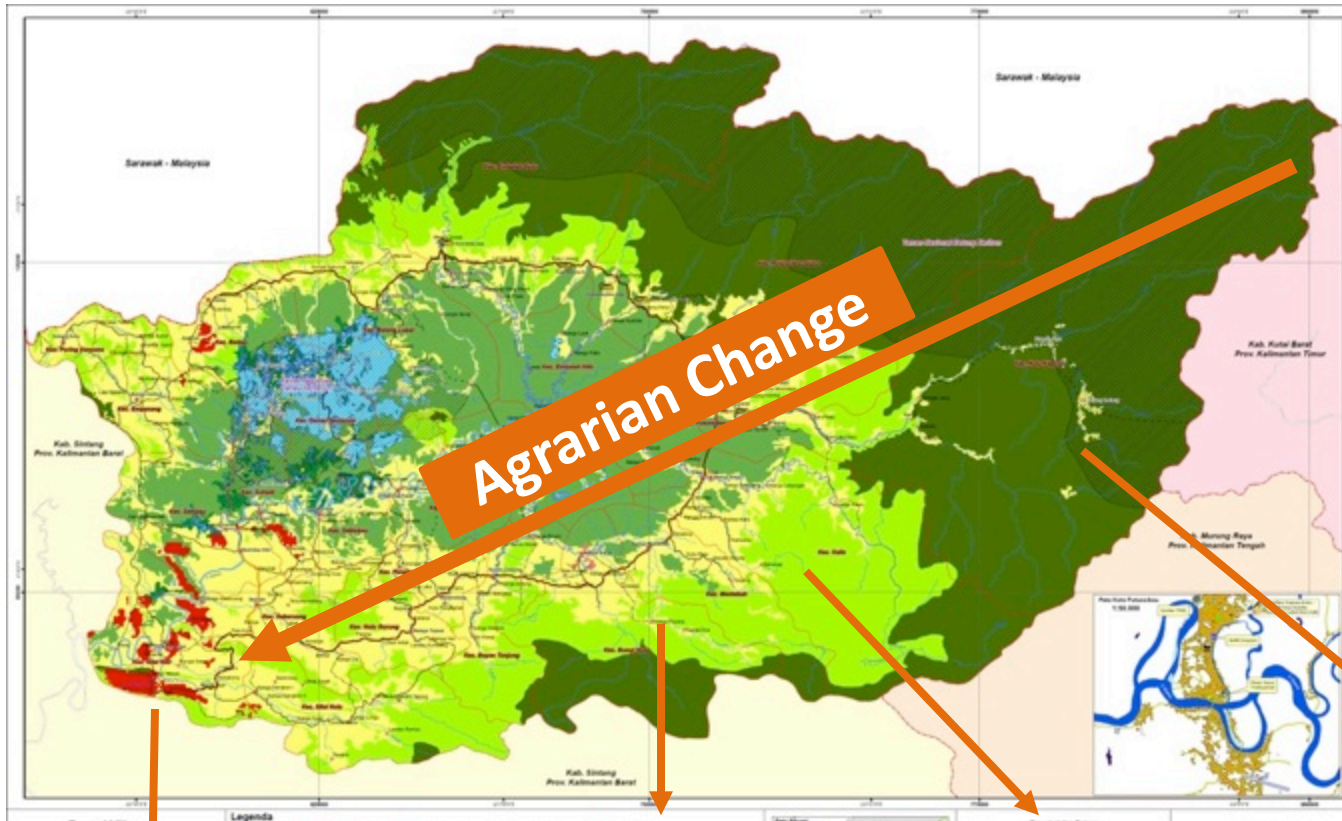
Study site: Kapuas Hulu, Kalimantan, Indonesia



- Primary forest
- Rubber agroforestry
- Oil palm plantation
- Oil palm concession



Study site: Kapuas Hulu, Kalimantan, Indonesia



- Primary forest
- Rubber agroforestry
- Oil palm plantation
- Oil palm concession



A case study from Cameroon



Technical Cooperation Units (TOU)

- Concept of Technical Operations Units (TOU) was developed upon creation of the Ministry of Environment and Forestry in 1992 (articles 41 & 42 of Decree)
- Forest Environment Sector Programme (FESP) framework, elaborated in 2003 by the Government of Cameroon with assistance of international development partners:
- [A] *“TOU is a delimited geographical area, based on ecological, socio-economic, cultural and political characteristics for the enhancement of integrated landscape management involving all stakeholders”*
- [A] *TOU is a participatory management concept: It is a tool for the implementation of environmental and forest policy*

Why was the TOU concept adopted?



- For improved implementation of the National Forest Environmental Sector Programme (PSFE)
- To realise the increased contribution of natural resources management for poverty alleviation
- Increased and equitable involvement of all the stakeholders in the management of natural resources

ToU's in Cameroon



- TOU's of varying extent and geographical coverage and complexity
- Often “managed” by external agents with funding from bilateral arrangements (e.g. German Development Bank (KfW))
- Sustainability?

Advantages of TOU process



- Integrated landscape management tool
- Multi-stakeholder land use-based forest management approach
- Focused management interventions on specific land uses
- Promote platform for societal dialogue between managers of various land-use types (timber production, nature protection, industrial agriculture, industry, habitation, recreational areas)

How are ToU's administered?

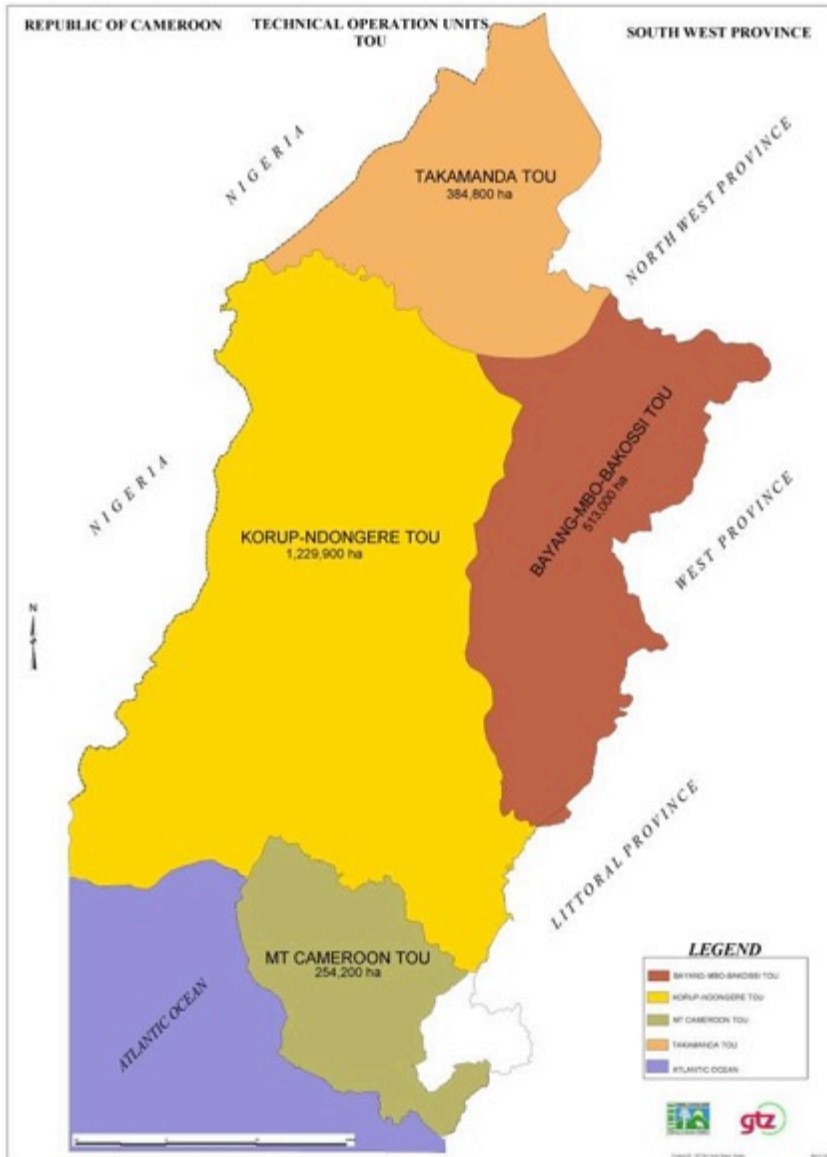


- TOU Conservator is appointed by PM decree
- A Management Committee is created and organised by PM decree
- The key advantage is that within the TOU area, all stakeholders elaborate and implement a holistic management concept using the synergy of their partnership

Impact of TOU's on local populace

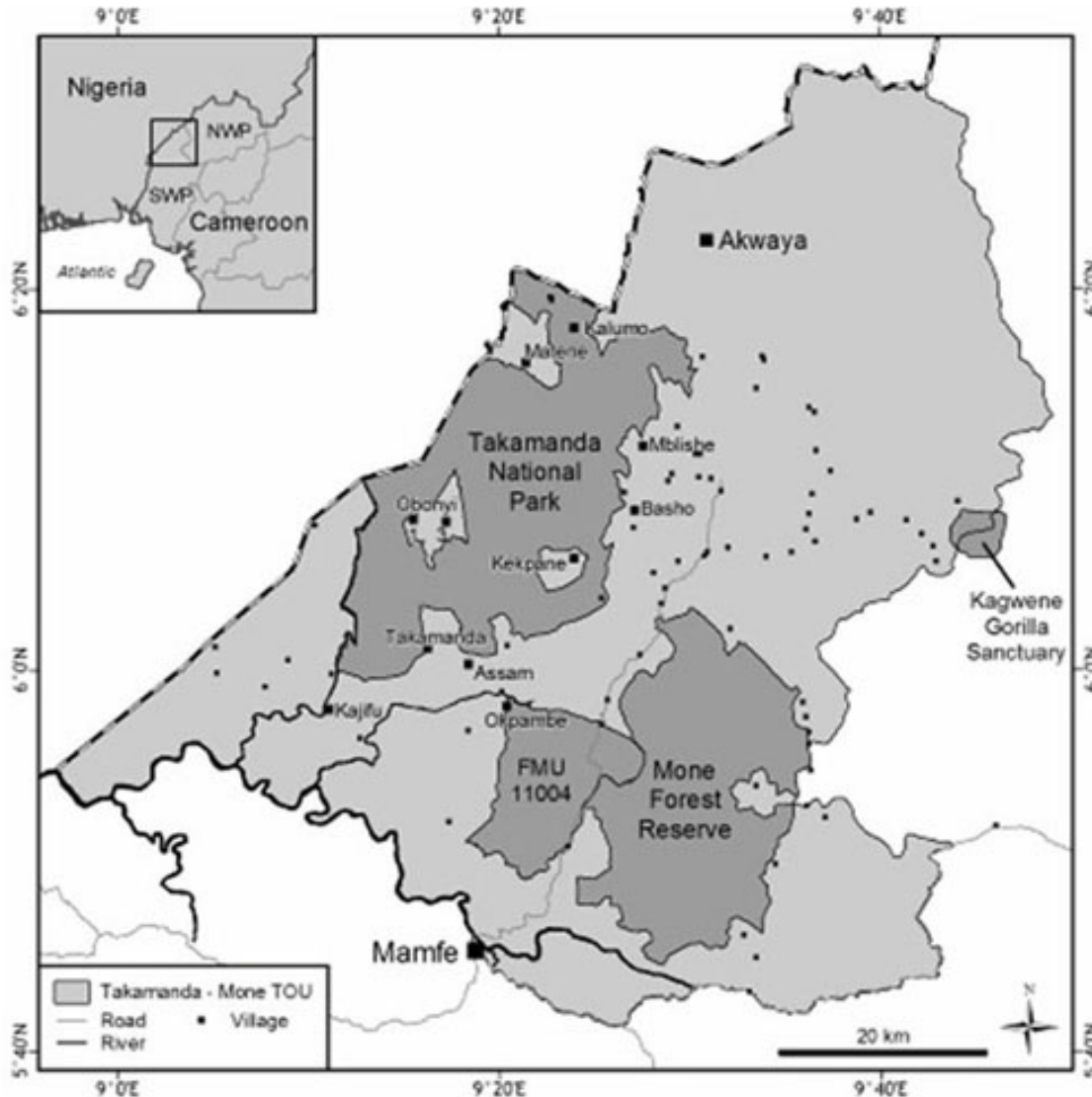
- Increased involvement of local people in forest management issues
- Promoting community development through use of:
 - Forest royalties from exploitation of forest management units (UFA) and production forest reserves
 - Income generated from direct exploitation of forest resources (Community Forest Management)
 - Harvesting and commercialisation of non-timber forest products
 - Accompanying development measures initiated in communities close to nature protection areas- Village Development Plans

SW Region



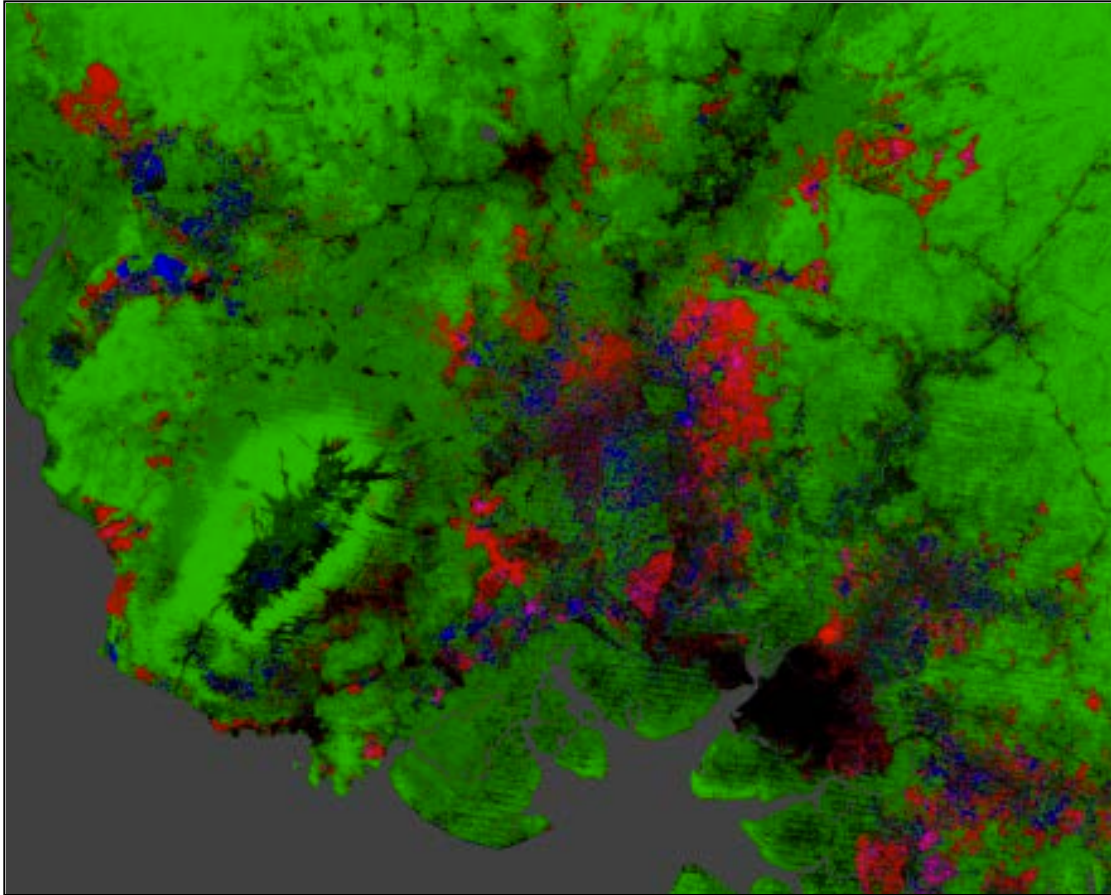
- Whole region re-classified
- But not for conservation (nor should it be)
- Open to re-classification within TOU boundaries

The Takamanda-Mone TOU

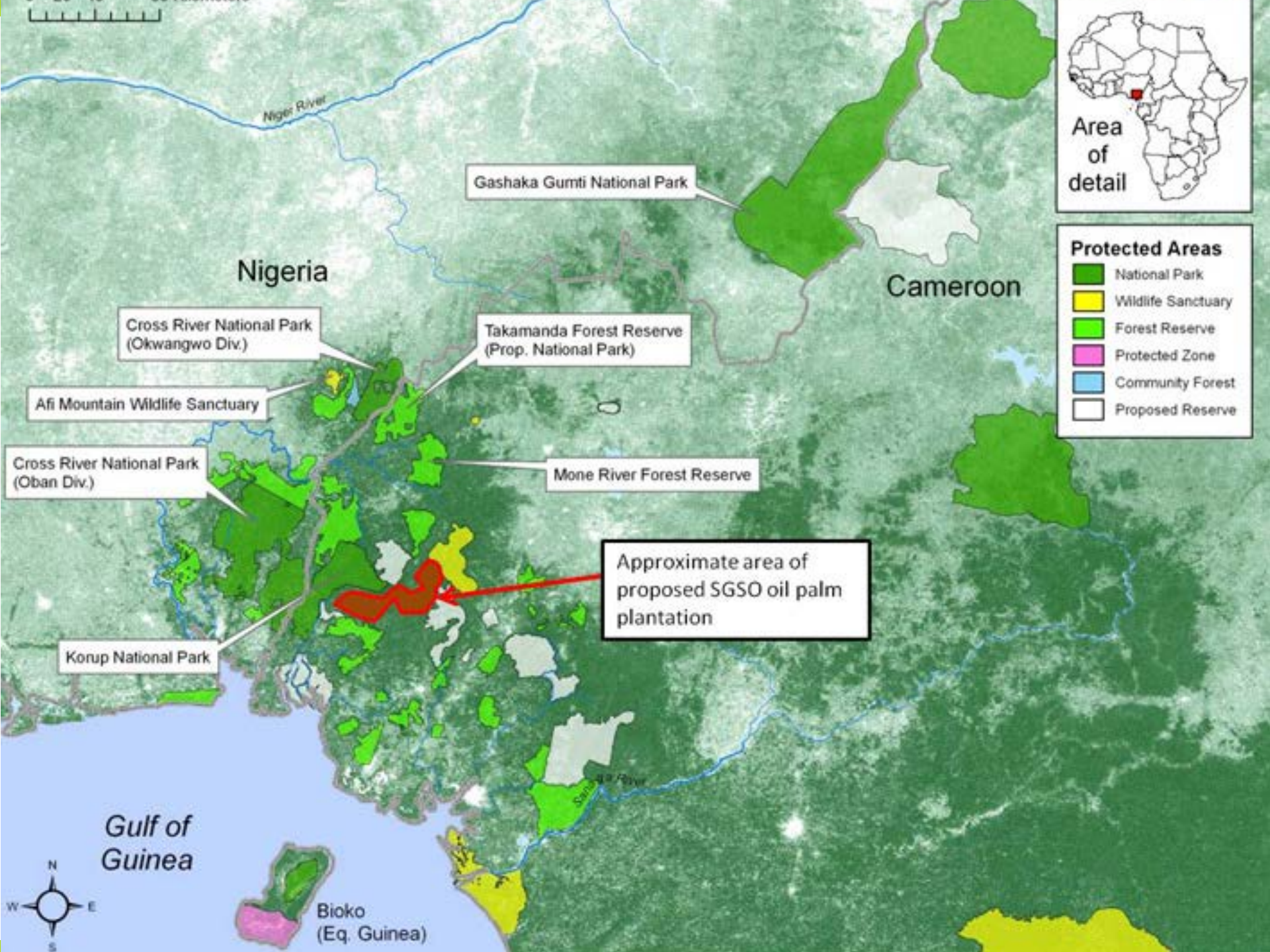


- 440,000 ha.
- Complex mosaic of forest, timber concession, PA's and community managed areas
- Home to Cross River gorilla and other endangered species
- Strong pressures from cross-border trade

The pitfalls



- Despite being part of Mt Cameroon TOU, oil palm forest clearance and planting have major impact
- External forces often override local considerations
- Weak local governance
- Lack of agreement between stakeholders



ToU's in summary

- TOU establishment was “ahead of its time” in terms of providing legal framework for integrated landscape management
- However, real coordination between stakeholders has been hamstrung by skewed power relations and competing interests
- Weak governance had allowed external decisions about land use to be made without requisite consultation
- BUT formalisation of integrated landscape management in this way is positive way ahead



Challenges of the landscape approach



- Understanding complex systems is not straightforward
- Understanding and influencing underlying trajectories of change
- Functionality of landscape mosaics
- The landscape approach is different to spatial planning. Landscapes are dynamic and subjective. Different people see them in different ways.
- Trade-offs are the norm and have to be negotiated
- There is no “end point” or best solution for a landscape – one can simply intervene to avoid negative outcomes and favour potentially better ones

Some (final) tricky issues



- What are we actually trying to achieve?
- Who decides?
- Strong (and trusted) facilitation
- How to reconcile and negotiate for trade-offs?
- How to predict outcomes and understand “landscape dynamics”?
- Landscape approach is a *process*, not a project!



www.landscapes.org
www.cifor.org
t.sunderland@cgiar.org

Produced as part of



RESEARCH
PROGRAM ON
Forests, Trees and
Agroforestry



Center for International Forestry Research (CIFOR)

CIFOR advances human well-being, environmental conservation and equity by conducting research to help shape policies and practices that affect forests in developing countries. CIFOR is a member of the CGIAR Consortium. Our headquarters are in Bogor, Indonesia, with offices in Asia, Africa and South America.



cifor.org

blog.cifor.org